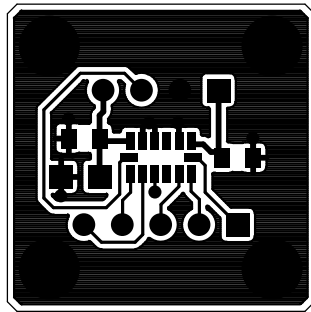


301-476

PSS

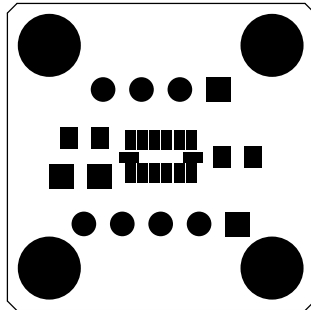
Primary (Top) Silkscreen



301-476

PRI

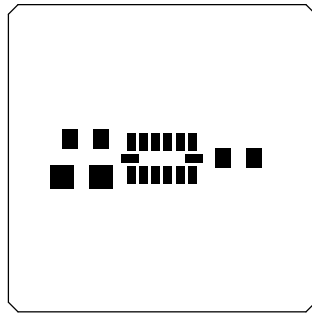
First (Top) Copper Layer



301-476

PSM

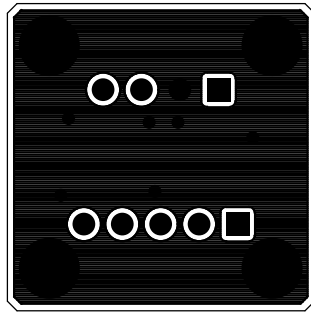
Primary (Top) Soldermask



301-476

PPM

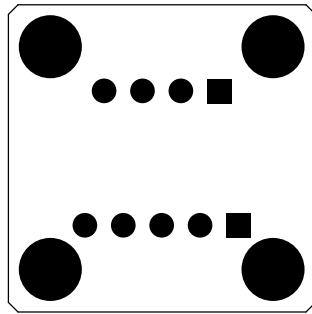
Primary (Top) Pastemask



301-476

SEC

Second (Bottom) Copper Layer



301-476

SSM

Secondary (Bottom) Soldermask

SPECIFICATIONS:

MATERIAL: - G10 OR FR-4, GLASS EPOXY .090", 1 OUNCE OF COPPER.

PROCESS: - SMOBC.

- MINIMUM TRACES 0.012",MINIMUM SPACING 0.012"

- ALL HOLES ARE PLATED WITH 1 OUNCE OF COPPER.

- MAKE SURE THE ASPECT RATIO MEET YOUR CAPABILITY.

- DIMENSIONS FOR DRILLING ARE GIVEN AFTER PLATING.

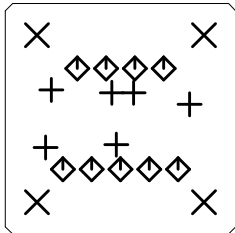
- DRILLING TOLERANCES ARE +/-0.003"

SOLDER MASK: - TYPE UV OR PHOTO IMAGEABLE OR EQUIVALENT.

SILKSCREEN: - EPOXY ENAMEL WHITE.

DRILLING: - USE 301-476.drl

DATA: - GERBER & DRILLING FILE ARE SUPPLIED BY:
INTEPCO CONTROLS LTD



301-476

FAB

SIZE	QTY	SYM	PLATED	TOL
20	6	+	YES	+0.003/-0.012
116	4	X	YES	+/-0.003
35	9	◇	YES	+/-0.0