
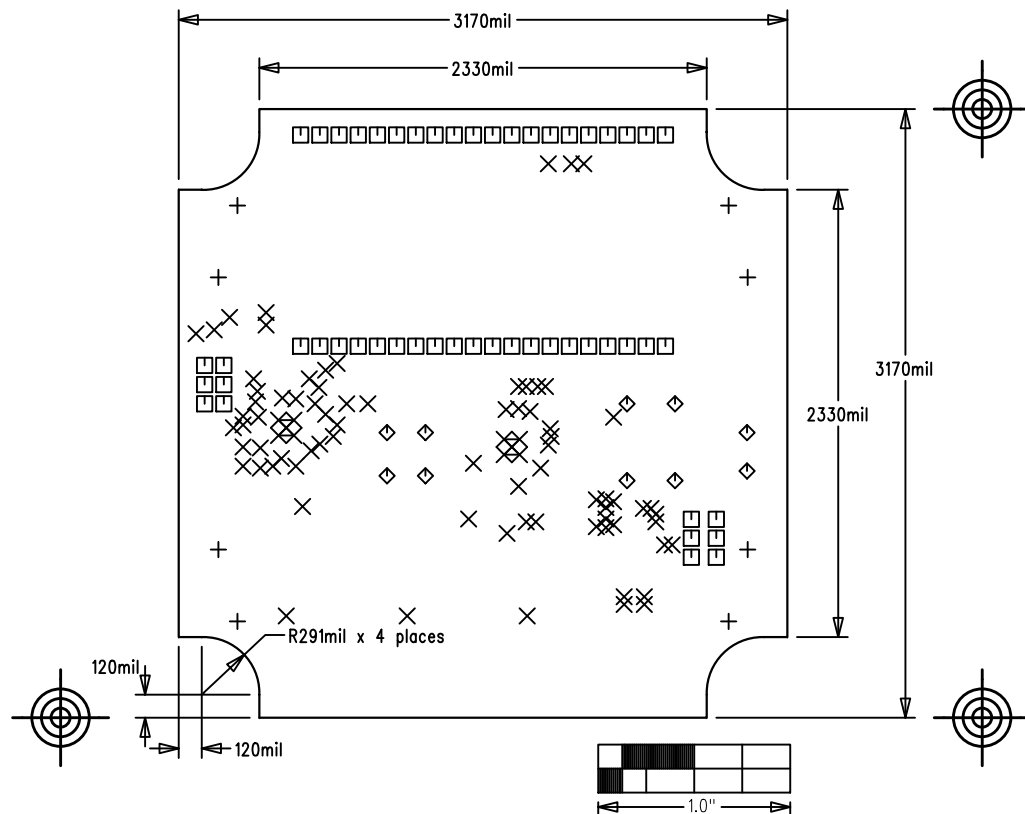


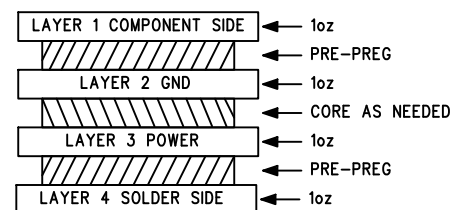
MAXREFDES70#	
High Accuracy Flow/Heat Meter	
P/N: EPCBREFDES70	REV A
 maxim integrated™	
LAYER DRILL & MECHANICALS	
DATE:	ALL UNITS ARE IN 0.001"



SIZE	QTY	SYM	PLATED	TOL
90	8	+	NO	+/-3.0
15	84	×	YES	+/-3.0
37	52	□	YES	+/-3.0
67	10	◇	YES	+/-3.0
20	2	⊗	YES	+/-3.0

NOTES: UNLESS OTHERWISE SPECIFIED

- FABRICATE USING PROVIDED GERBER FILES PER LATEST REVISION OF IPC-A-600 UNLESS OTHERWISE NOTED.
- MATERIAL: RoHS COMPLIANT FR-408 OR SIMILAR LAMINATE MATERIAL WITH $T_g \geq 170$ AND COMPATIBLE WITH LEAD-FREE SOLDERING PROCESS.
- BOARD DIMENSIONS: 3.17"x3.17" (80.52mmx80.52mm) ± 0.010 ". BOARD THICKNESS: 0.062"
- LAYERS: 4. SEE LAYER STACKUP CHART.
- MINIMUM TRACE/SPACING: 10 MILS/8 MILS.
- COPPER CLAD FINISH: 1oz MINIMUM ON OUTER LAYERS AND 1oz ON INNER LAYERS.
- SURFACE MOUNT PADS: 148.
- SOLDERMASK: GREEN LPI SMOBC.
- LEGENDS: WHITE, DOUBLE-SIDED, NON-CONDUCTIVE EPOXY INK OR EQUIVALENT. CLIPPED ALL LEGENDS FROM EXPOSED METAL.
- PLATING: MUST BE LEAD FREE AND RoHS COMPLIANT.
- FINISH: VENDOR SHOULD USE THE MOST ECONOMICAL LEAD FREE AND RoHS COMPLIANT PROCESS AVAILABLE OR AS SPECIFIED IN PURCHASE ORDER.
APPROVED FINISH:
HASL LEAD-FREE
IMMERSION TIN
IMMERSION GOLD
- PUT VENDOR LOGO & DATE CODE IN INK ON BOTTOM SIDE ONLY. DATE CODE FORMAT MUST BE YYWW ONLY.
- THRU HOLES: 0.001" MIN.
- TOLERANCES:
PLATED-THRU HOLES: ± 0.003 "
PATTERN-TO-PATTERN: ± 0.005 "
LEGEND TO LEGEND: ± 0.007 "
SOLDERMASK TO PATTERN: ± 0.005 ".



CROSS SECTION DETAIL