
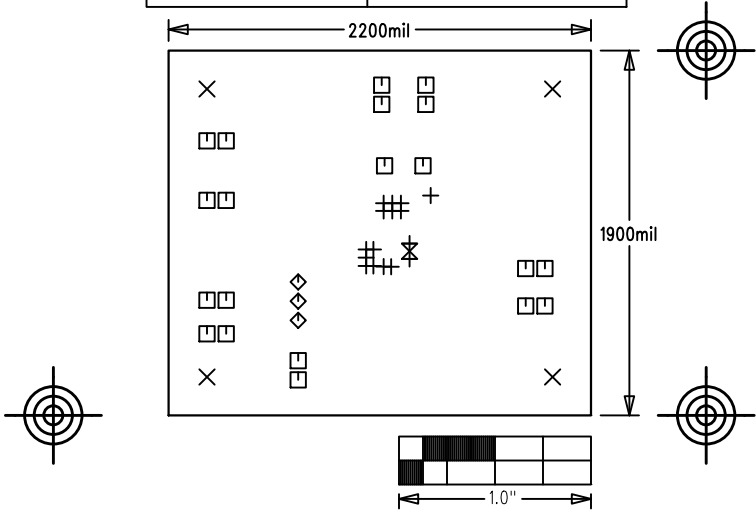


NOTES: UNLESS OTHERWISE SPECIFIED

1. FABRICATE USING PROVIDED GERBER FILES PER LATEST REVISION OF IPC-A-600 UNLESS OTHERWISE NOTED.
2. MATERIAL: RoHS COMPLIANT FR-408 OR SIMILAR LAMINATE MATERIAL WITH $T_g \geq 170$ AND COMPATIBLE WITH LEAD-FREE SOLDERING PROCESS.
3. BOARD DIMENSIONS: 2.20"X1.90" ± 0.010 ".
BOARD THICKNESS: 0.062"
4. LAYERS: 2.
5. MINIMUM TRACE/SPACING: 10 MILS/8MILS
6. COPPER CLAD FINISH: 1oz ON ALL LAYERS.
7. SURFACE MOUNT PADS: 33.
8. SOLDERMASK: GREEN LPI SMOBC.
9. LEGENDS: WHITE. SINGLE-SIDED. NON-CONDUCTIVE EPOXY INK OR EQUIVALENT.
CLIPPED ALL LEGENDS FROM EXPOSED METAL.
10. PLATING: MUST BE LEAD FREE AND RoHS COMPLIANT.
11. FINISH: VENDOR SHOULD USE THE MOST ECONOMICAL LEAD FREE AND RoHS COMPLIANT PROCESS AVAILABLE OR AS SPECIFIED IN PURCHASE ORDER.
APPROVED FINISH:
HASL LEAD-FREE
IMMERSION TIN
IMMERSION GOLD
12. VENDOR LOGO & DATE CODE: ALLOWED IN INK ON BOTTOM SIDE ONLY.
13. THRU HOLES: 0.001" MIN.
14. TOLERANCES:
PLATED-THRU HOLES: ± 0.003 "
PATTERN-TO-PATTERN: ± 0.005 "
LEGEND TO LEGEND: ± 0.007 "
SOLDERMASK TO PATTERN: ± 0.005 "

MAX17501BT EVALUATION KIT	
P/N: EPCB17501BT	REV A
PROPERTY OF  INTEGRATED PRODUCTS	
LAYER DRILL & MECHANICALS	
DATE:	ALL UNITS ARE IN 0.001"



SIZE	QTY	SYM	PLATED	TOL
15	16	+	YES	± 3.0
125	4	X	YES	± 3.0
40	20	.	YES	± 3.0
37	3	◇	YES	± 3.0
20	1	X	YES	± 3.0