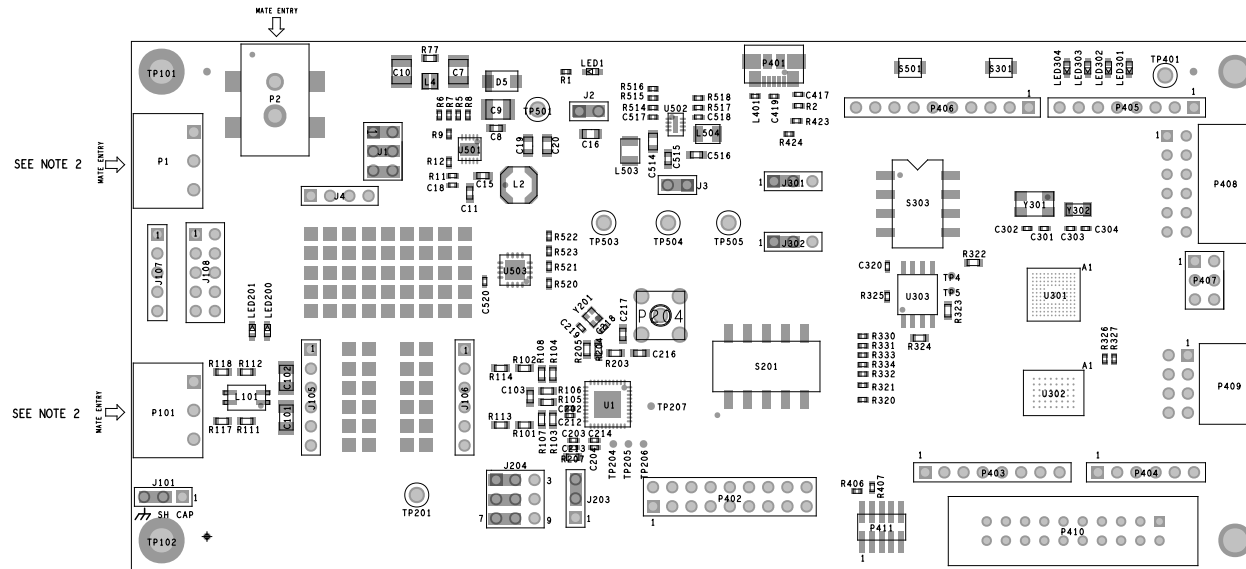



PRIMARY SIDE

REVISION			
REV	DESCRIPTION	DATE	APPROVED
A	INITIAL RELEASE	21-MAY-21	M.BRYCHTA
B	ECR-104500	03-SEP-21	M.BRYCHTA

**NOTES:**

1. INSERT SHUNTS (AS PER BOM) ON THE FOLLOWING CONNECTORS
 - J1: 3 SHUNTS INSERTED
 - J2: 1 SHUNT INSERTED AFTER TEST.
 - J3: 1 SHUNT INSERTED
 - J101: 1 SHUNT INSERTED BETWEEN SHIELD AND EARTH POSITION
 - J203: 1 SHUNT INSERTED BETWEEN 1.1V AND LDO POSITION AS SHOWN
 - J204: 3 SHUNTS INSERTED ... ONE IN EACH ROW ON THE 3.3V SIDE AS SHOWN
 - J301: 1 SHUNTS INSERTED IN THE 'GLOBAL' LOCATION AS SHOWN
 - J302: 1 SHUNTS INSERTED IN THE '3.3V' LOCATION AS SHOWN
2. INSERT GENUINE PHOENIX CONTACT PLUG (AS PER BOM) INTO P1 AND P101.
3. FIX 4 RUBBER FEET (AS PER BOM) AS CLOSE AS POSSIBLE TO THE 4 CORNERS WITHOUT COVERING THE MOUNTING HOLES OR ANY COMPONENTS.

UNLESS OTHERWISE SPECIFIED DIMENSIONS ARE IN MM TOLERANCES DECIMALS FRACTIONS ANGLES .XX \pm 0.25 \pm 1/32 \pm 2 .XXX \pm 0.127	ASSEMBLY		 ANALOG DEVICES		ANALOG DEVICES INTERNATIONAL ERDC Building Raheen Business Park Raheen, LIMERICK, IRELAND	
	APPROVAL	DATE	TITLE			
	DRAWN BY PADDY DUIGAN	03-SEP-21	EVAL-ADIN1110EBZ			
	DESIGNED					
MATERIAL	CHECKED					
	APPROVED		SIZE	FSCM NO	DRAWING NUMBER	REV
	MFG ENGINEER		A4		01-067642-01	B
DO NOT SCALE DWG			SCALE	1 / 1		SHEET 1 OF 2

SECONDARY SIDE

