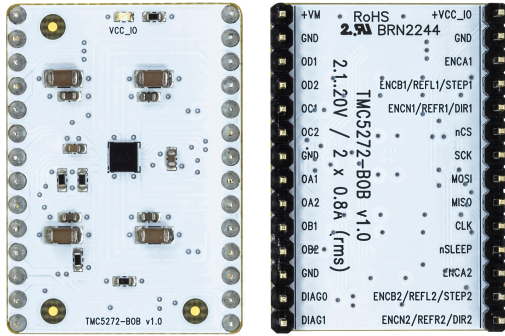


TMC5272-BOB User Guide

19-101830, Rev 0, 12/23

Module Top/Bottom View



Features and Additional Resources

- TMC5272 Stepper Motor Driver & Controller
- Supply Voltage 2.1V to 20V DC
- $2 \times I_{phase}$ up to $0.8A_{RMS}$
- **StealthChop2** Silent PWM Mode
- **StallGuard4** Sensorless Motor Load Detection
- **TriCoder** Sensorless Standstill Steploss Detection and Full Step Encoder
- Board Width 1.0", Board Height 1.4"
- 2 x 14 Pin 0.1" Header Rows for Connectors
- Link to [Additional Information and IC Data Sheet](#)

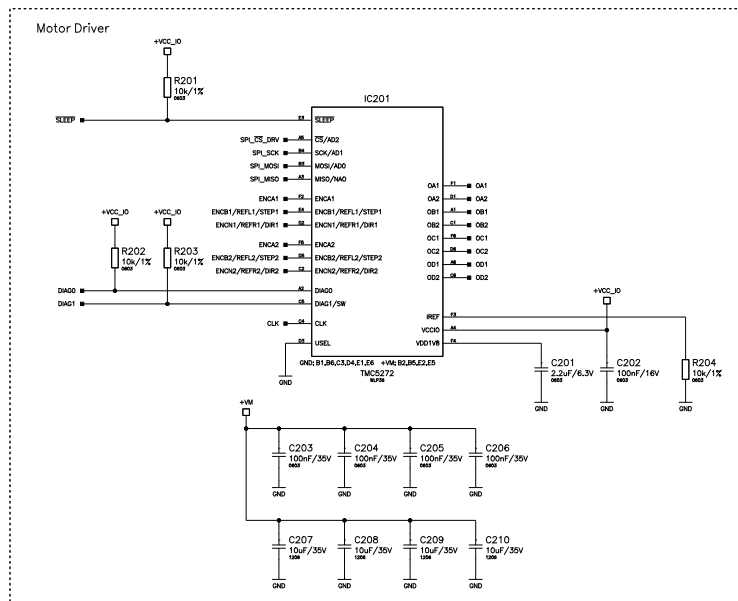
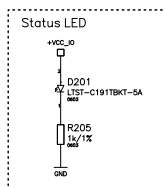
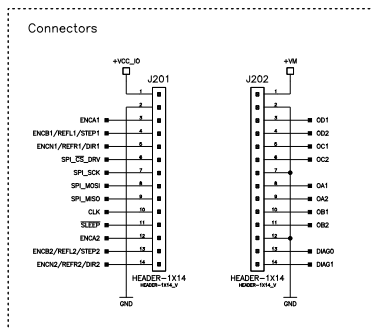
Pin List

Pin	Left Header	Right Header
1	+VCC_IO	+VM
2	GND	GND
3	ENCA1	OD1 (Motor2 Phase D)
4	ENCB1/REFL1/STEP1	OD2 (Motor2 Phase D)
5	ENCN1/REFR1/DIR1	OC1 (Motor2 Phase C)
6	SPL_CSn	OC2 (Motor2 Phase C)
7	SPL_SCK	GND
8	SPL_MOSI	OA1 (Motor1 Phase A)
9	SPL_MISO	OA2 (Motor1 Phase A)
10	CLK	OB1 (Motor1 Phase B)
11	SLEEPn	OB2 (Motor1 Phase B)
12	ENCA2	GND
13	ENCB2/REFL2/STEP2	DIAG0
14	ENCN2/REFR2/DIR2	DIAG1

Bill of Materials

Pcs.	Value	Footprint	Description
1	1k/1%	0603	Resistor
4	10k/1%	0603	Resistor
1	2µF, 6.3V	0603	Capacitor
4	10µF, 35V	0603	Capacitor
1	100nF, 16V	0603	Capacitor
4	100nF, 35V	0603	Capacitor
1	Blue/0603	0603	LED
1	TMC5272	TSSOP38	ADI Trinamic Stepper Motor Driver

Schematics



©2023 TRINAMIC Motion Control GmbH & Co. KG, Hamburg, Germany
 Terms of delivery and rights to technical change reserved.
 Download newest version at www.analog.com.

