

Evaluates: MAX25660

General Description

The MAX25660 evaluation kit (EV kit) is a fully assembled and tested application circuit that simplifies the evaluation of the MAX25660 400kHz and 2.1MHz, 36V buck-boost converter. All installed components are automotive rated.

The standard EV kit comes with the 400kHz option installed. The 2.1MHz option can also be used by changing out several components on the board.

Features and Benefits

- Buck-Boost Converter with Integrated Power FETs
- Seamless Transition between Buck, Buck-Boost, and Boost Regions
- 4.5V to 36V Input Supply Range
- 7V Output at up to 5A Output Current
- Current-Limit and Hiccup Mode
- Output Enable/Low-Power Mode
- PGOOD Voltage Monitor Output

Quick Start

Required Equipment

- MAX25660 EV Kit
- 36V, 10A DC Power Supply
- Resistive or Electronic Load
- Oscilloscope

[Ordering Information](#) appears at end of data sheet.

Procedure

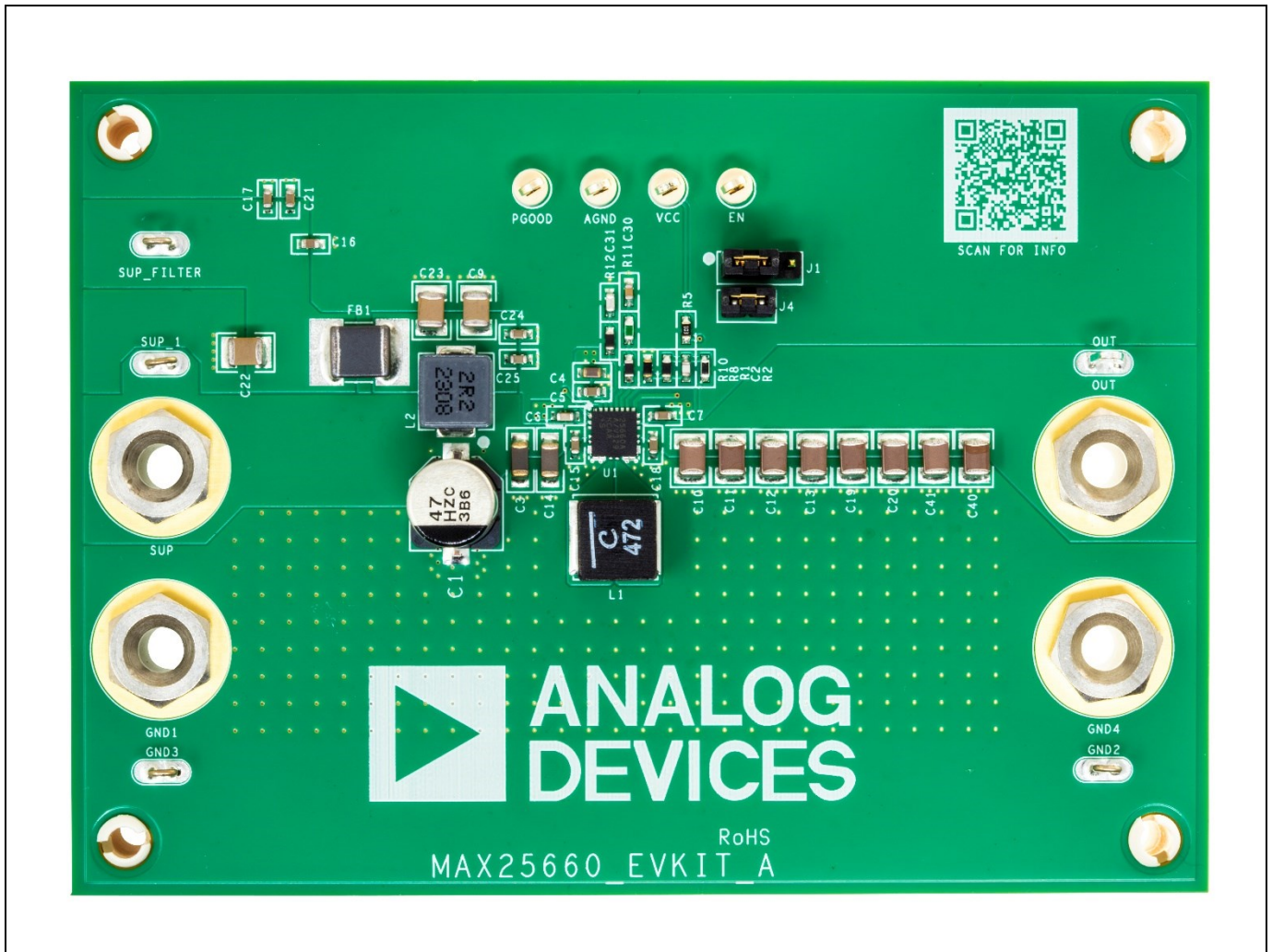
The EV kit is fully assembled and tested.

Caution: Do not turn on the power supply until all connections are made. If using LEDs as a load, LEDs may be very bright.

1. Provide 14V between the SUP and GND1 or GND3 inputs. SUP and SUP_1 connect to the same node. SUP_Filter may be used as a filtered input.
2. If using a resistive load, the resistive load should be able to withstand 35W of power. Connect the load between the OUT and GND2 or GND4 outputs.
3. For an electronic load, set the load to sink 5A. Assuming a 35W maximum at 7V out, connect the load between the OUT and GND2 or GND4 outputs.
4. The output may also be connected to the VLED pin of an LED current sink device such as the MAX25630/MAX25631. Follow the power-on instructions using the MAX25630/MAX25631 EV kit, but use the output of the MAX25660 EV kit to provide power to the LEDs.
5. Turn on the power supply.

Visit [Web Support](#) to complete the nondisclosure agreement (NDA) required to receive additional product information.

MAX25660 EV Kit Photo



Notes

ALL INFORMATION CONTAINED HEREIN IS PROVIDED “AS IS” WITHOUT REPRESENTATION OR WARRANTY. NO RESPONSIBILITY IS ASSUMED BY ANALOG DEVICES FOR ITS USE, NOR FOR ANY INFRINGEMENTS OF PATENTS OR OTHER RIGHTS OF THIRD PARTIES THAT MAY RESULT FROM ITS USE. SPECIFICATIONS ARE SUBJECT TO CHANGE WITHOUT NOTICE. NO LICENSE, EITHER EXPRESSED OR IMPLIED, IS GRANTED UNDER ANY ADI PATENT RIGHT, COPYRIGHT, MASK WORK RIGHT, OR ANY OTHER ADI INTELLECTUAL PROPERTY RIGHT RELATING TO ANY COMBINATION, MACHINE, OR PROCESS WHICH ADI PRODUCTS OR SERVICES ARE USED. TRADEMARKS AND REGISTERED TRADEMARKS ARE THE PROPERTY OF THEIR RESPECTIVE OWNERS.