

## Evaluating the ADuM4195 Isolated Amplifier with Adjustable Gain and Single-Ended Output

### FEATURES

- ▶ ADuM4195 isolated amplifier in a wide body SOIC-16 package
- ▶ [ADuM6028-5BRIZ](#) isolated on-board power supply
- ▶ Maximum 1000 V DC preconfigured input
- ▶ Configurable for AC voltage input

### EQUIPMENT NEEDED

- ▶ Power supply, 5 V DC  $\pm$  10%, 50 mA
- ▶ Adjustable DC voltage source, 0 kV to 1 kV
- ▶ 2  $\times$  DMM, 5½ digit

### DOCUMENTS NEEDED

- ▶ [ADuM4195](#) data sheet

### EVALUATION BOARD PICTURE

### GENERAL DESCRIPTION

The EVAL-ADuM4195EBZ is a compact isolated DC and AC (configurable) voltage monitoring board with an isolated on-board power supply to facilitate the setup and testing of the performance characteristics of the ADuM4195.

On the input side of the board (right-hand side), the high-voltage input connector P1 is preconfigured to accept up to 1 kV DC. The internal operational amplifier (op amp) on the input side is connected in a voltage-follower configuration. On the output side of the board (left-hand side), the overall output of the ADuM4195 is directly accessible on P6 (preconfigured) or can be first-order low-pass filtered by adding a resistor and capacitor. A single 5 V DC supply is sufficient to power both the input and output side of the board, while the optional power disable (PDIS) input can be used to disable the on-board isolated power supply in applications where low-power consumption is at a premium. Full details about the device are available in the ADuM4195 data sheet, which must be consulted when using the EVAL-ADuM4195EBZ.

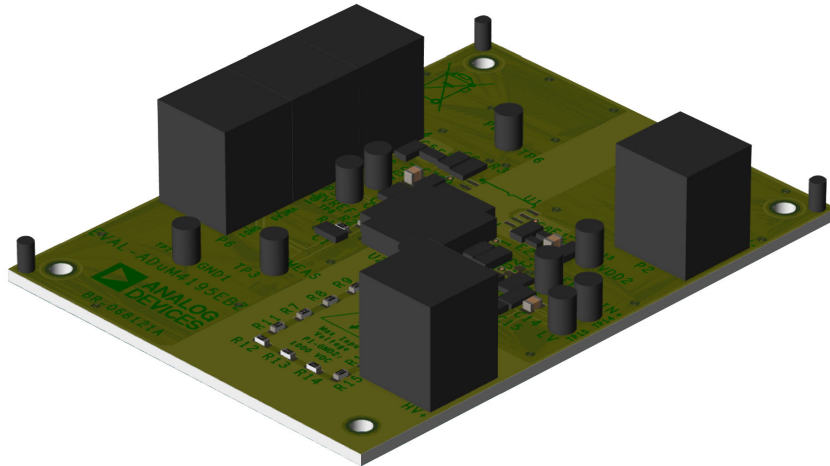


Figure 1. EVAL-ADuM4195EBZ

**TABLE OF CONTENTS**

Features .....	1	AC Measurement.....	5
Equipment Needed.....	1	Usage Information.....	7
Documents Needed.....	1	Useful Input Range.....	7
General Description.....	1	Divider Resistors.....	7
Evaluation Board Picture.....	1	Input Protection Diodes.....	7
Connectors.....	3	Evaluation Board Schematic and Artwork.....	8
Test Points.....	3	Ordering Information.....	10
Test Setup.....	4	Bill of Materials.....	10
Configurations.....	5	Notes.....	11
DC Measurement.....	5		

**REVISION HISTORY****7/2024—Revision 0: Initial Version**

CONNECTORS

Figure 2 shows the locations of the push-in spring connectors for quick interfacing with the EVAL-ADuM4195EBZ and Table 1 provides the description for the connectors. Connectors are designed to take 14 to 26 American wire gauges (AWGs) wire stripped to approximately 8 mm.

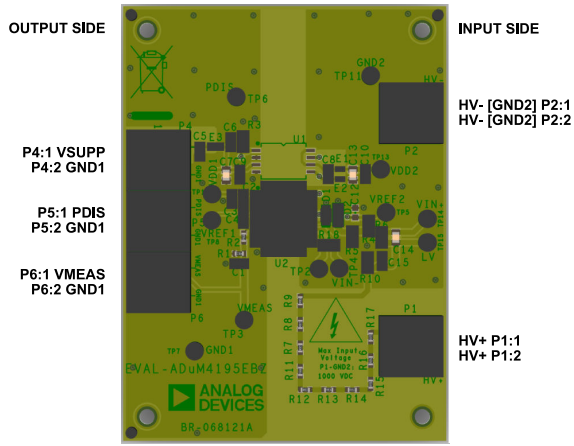


Figure 2. Location of Connectors

Table 1. Connectors List

Component	Net Name	Description
P1:1	HV+	Positive input of high-voltage divider
P1:2	HV+	Positive input of high-voltage divider
P2:1	HV-, GND2	Isolated power supply, output ground (right-hand side ground)
P2:2	HV-, GND2	Isolated power supply, output ground (right-hand side ground)
P4:1	VSUPP	+5 V DC input power supply (left-hand side)
P4:2	GND1	Power supply GND (left-hand side ground)
P5:1	PDIS	Disables the isolated power supply (input) $R_{IN} = 1\text{ k}\Omega$ Enable: leave open Disable: connect to VSUPP
P5:2	GND1	Power supply GND (left-hand side ground)
P6:1	VMEAS	Measured output voltage
P6:2	GND1	Power supply GND (left-hand side ground)

TEST POINTS

Test points are provided for measurement probes.

Table 2. Test Points

Pin	Net Name	Description
TP1	VDD1	Supply voltage (left-hand side) of isolated amplifier (U2:1)
TP3	VMEAS	Output of isolated amplifier, through R2
TP4	VIN-	Inverting operational amplifier (op amp) input (U2:11), connected to op amp output (U2:10)
TP5	VREF2	Reference output voltage of op amp (right-hand side) (U2:13)
TP6	PDIS	Power-disable signal of isolated power supply (U1:1)
TP7	GND1	Isolated amplifier ground (left-hand side) (U2:2)
TP8	VREF1	Reference output voltage of isolated amplifier (left-hand side) (U2:4)
TP11	GND2	Isolated amplifier ground (right-hand side) (U2:9)
TP13	VDD2	Output of on-board isolated power supply feeding isolated amplifier (right-hand side) (U2:16)
TP14	VIN+	Noninverting op amp input (U2:12)
TP15	LV	Low-voltage end of user-configurable high-voltage divider

## TEST SETUP

The EVAL-ADuM4195EBZ default configuration is capable of handling input voltages of up to 1000 V DC continuously. For such voltage levels, it is indispensable to secure the board on a dry, clean, and isolated surface, preferably using 15 mm nylon stand-offs for extra clearance. The input side of the board refers to the noninverting input of the op amp (on the right-hand side of the isolation barrier), whereas the output side refers to the overall output of the isolated amplifier (on the left-hand side of the isolation barrier). The input and output side are fully isolated from each other but can be connected to the same GND to facilitate testing.

Use the following sequence to set up the EVAL-ADuM4195EBZ for evaluations up to 1000 V DC:

1. Secure the EVAL-ADuM4195EBZ on the workbench.
2. Connect a well-regulated low-noise 5 V DC power supply (current rating approximately 50 mA) to P4:1 (VSUPP) and P4:2 (GND1). Note that the power supply must not exceed the absolute maximum voltage ratings of the [ADuM4195](#) during power cycling.
3. To measure the output voltage of the EVAL-ADuM4195EBZ, connect a digital multimeter (DMM) between P6:1 (VMEAS) and P6:2 (GND1).
4. In addition, the low-voltage (non-inverting) input to the internal op amp ( $V_{IN+}$  = low voltage) and the output of the internal op amp ( $V_{OUT2} = V_{IN-}$ ) can be measured if required by connecting additional DMMs to TP15 (LV) and TP10 ( $V_{IN-}$ ), respectively (with reference to GND2). Note that the input resistance of the DMM poses an additional load on the input divider network of the EVAL-ADuM4195EBZ. Therefore, it affects the accuracy of the divider ratio. Make sure that the DMM is set to high-impedance ( $R_{IN} > 10 \text{ M}\Omega$ ). Although these are low-voltage connections, it is recommended to use the appropriate high-voltage cabling because of the proximity to the high-voltage input.
5. Switch on the 5 V DC power supply. The output current on the power supply must read  $I_{OUT} < 35 \text{ mA}$ .
6. Connect a low-noise precision, high-voltage DC source (DC voltage calibrator) with its positive terminal to P1:1 (HV+) and its negative terminal to P2:1 (HV-, GND2). The voltage source must have a sufficient current rating of  $I_{OUT} > 3 \text{ mA}$ . Use the appropriate high-voltage cabling for connecting the high-voltage DC source. Set the output voltage to 0 V DC and then turn the supply on to allow for a sufficient warmup time before starting to test the EVAL-ADuM4195EBZ.
7. The user can now analyze the performance of the ADuM4195 by varying the voltage at high-side input and record the voltage at low-side output P6:1.

## CONFIGURATIONS

### DC MEASUREMENT

The EVAL-ADuM4195EBZ default configuration is set up for a maximum input voltage of 1000 V DC through the high-voltage divider R7 to R17. The ratio of the high-voltage divider can be calculated as:

$$V(LV)/V(HV+) = R10/(R10 + R_{HV}) \quad (1)$$

where

$$high\text{-voltage input resistor } (R_{HV}) = R7 + R8 + R9 + R11 + R12 + R13 + R14 + R15 + R16 + R17 \quad (2)$$

R7 to R9 and R11 to R17 (1 M $\Omega$  each) are high-precision metal electrode leadless face (MELF) resistors. R10 is a high-accuracy resistor chosen so that a 1 kV DC input is translated into approximately 4.4 V DC on the divider output side. Modifications to the high-voltage divider must leave the high-voltage input unchanged to avoid the printed circuit board (PCB) area around them to be unnecessarily contaminated with flux residues. Resistor R10 can then be altered to adopt for input voltages lower than 1 kV DC. Choose resistor values such that U2:V<sub>IN+</sub> (at TP14) never exceeds the system maximum value (VDD2 minimum – 0.6 V) under any operating conditions.

The following are two examples of full-scale input voltage range, assuming VDD2 minimum = 5 V DC (board default):

- ▶ Maximum 1000 V DC input at P1:1 pin (default setup)
  - ▶ R10 = 44.2 k $\Omega$  (full-scale input voltage: 1136.22 V)
- ▶ Maximum 500 V DC input at pin P1:1
  - ▶ R10 = 80.60 k $\Omega$  (full-scale input voltage: 623.09 V)

### AC MEASUREMENT

In addition to the DC measurement, the EVAL-ADuM4195EBZ performs AC input measurements by using an AC coupling circuit for the internal op amp of the ADuM3195. The components of the AC coupling circuit (C14, R4, and R5) are shown in Figure 3 but are not populated in the default configuration.

Use the following sequence to set up the EVAL-ADuM4195EBZ for AC measurement:

1. Unsolder R6.
2. Replace R10 as needed (refer to the DC Measurement section for details).
3. Populate C14, R4, and R5.
4. Follow the guidelines in the Test Setup section.

The values of C14, R4, and R5 shown in Figure 2, with R10 = 44.2 k $\Omega$ , were set up so that a 230 V (rms)/50 Hz sinusoidal input is translated into a sinusoidal waveform oscillating between 1 V (minimum) and 3 V (maximum) on the low-voltage side of the divider (1 V peak amplitude).

In the default configuration, C15 compensates the stray capacitance present across the input high voltage resistors string. Therefore, the AC-coupled circuit transfer function is as follows:

$$\frac{V(VIN+)(j\omega)}{V(HV+)(j\omega)} = \frac{j\omega R10R4R5C14}{j\omega(R_{HV}R4R5 + R10R4R5 + R_{HV}R10R4 + R_{HV}R10R5) + R_{HV}R4 + R10R4 + R10R5 + R_{HV}R5} \quad (3)$$

This is a high-pass filter with an origin-zero and a pole. At high frequencies with respect to the pole, the phase-shift is zero and the gain becomes simply as follows:

$$A = \frac{V(VIN+)}{V(HV+)} = \frac{R10R4R5}{R_{HV}R4R5 + R10R4R5 + R_{HV}R10R4 + R_{HV}R10R5} \quad (4)$$

Use the values of the resistors in Equation 4 to determine the required gain at the target frequency. In the default design, the gain is  $A = 1/(\sqrt{2} \cdot 230)$ . For the high-frequency assumption to be true, the pole frequency ( $f_p$ ) must be much lower than the target frequency. In the default case, the design was done so that the pole used is placed 100 times lower than 50 Hz.

$$f_p = \frac{1}{2\pi C14(R_{HV}R4 + R10R4 + R10R5 + R_{HV}R5)} \quad (5)$$

In addition, the relationship between R4 and R5 (fed from VREF2, the reference voltage of the ADuM4195) sets up the offset voltage of the output waveform as follows:

$$V_{OFFSET} = (VREF2R5)/(R4 + R5) \quad (6)$$

In the default board configuration, the desired output waveform has its average value at  $V_{OFFSET} = 2$  V.

All values must be chosen such that U2:V<sub>IN+</sub> (at TP14) never exceeds the system maximum or minimum values under any operating conditions.

The following are two examples of full-scale input voltage range, assuming VDD2 minimum = 5 V DC (board default):

- ▶ Maximum 230 V (rms) at 50 Hz input at Pin P1:1, to a 1 V (peak) output waveform with 2 V DC offset (default)
  - ▶ R10 = 44.2 k $\Omega$ , C1 = 3.3 nF, VREF2 = 2.5 V
  - ▶ R5 = 4 R4, from Equation 6
  - ▶ A = 0.003074
  - ▶ R4 = 127 k $\Omega$  and R5 = 510 k $\Omega$ , from Equation 4
  - ▶ C14 > 100 × 21.9 nF, from Equation 5. Therefore, C14 = 2.2  $\mu$ F.
- ▶ Maximum 700 V (rms) at 50 Hz input at Pin P1:1, to a 1 V (peak) output waveform with 2 V DC offset
  - ▶ R10 = 44.2 k $\Omega$ , C1 = 3.3 nF, VREF2 = 2.5 V
  - ▶ R5 = 4 R4, from Equation 6

**CONFIGURATIONS**

- ▶  $A = 0.00101015$
- ▶  $R4 = 16.4 \text{ k}\Omega$  and  $R5 = 65.5 \text{ k}\Omega$ , from [Equation 4](#)
- ▶  $C14 > 100 \times 55.7 \text{ nF}$ , from [Equation 5](#). Therefore,  $C14 = 5.6 \mu\text{F}$ .

## USAGE INFORMATION

### USEFUL INPUT RANGE

Configure the input divider so that the maximum  $U2:V_{IN+}$  always stays approximately 0% to 5% below ( $VDD2$  minimum - 0.6 V), even if this requires dividing  $U2:V_{OUT2}$  to adopt for the input range of a downstream analog-to-digital converter (ADC). This ensures the full usage of the input range of the [ADuM4195](#).

### DIVIDER RESISTORS

An additional adjustment of R10 can reduce any nominal divider error further, if needed. However, in a voltage monitoring system, a downstream ADC, or processor takes care of the final calibration and adjustment of the gain and offset. Therefore, this eliminates the need for lower divider errors. However, the divider resistors must be

chosen for the lowest possible temperature coefficients to ensure stable divider accuracy over the full required temperature range.

### INPUT PROTECTION DIODES

In applications where accidental reverse input voltages are expected, a reverse input protection diode can be used. This is accomplished by Diode D1. In addition, a Zener Diode D2 can be used to limit the maximum voltage at the low-voltage input  $U2:V_{IN+}$ . However, it is to be noted that the leakage current through Diode D1 and Diode D2 can impair divider accuracy and linearity. Therefore, it is recommended to select D1 and D2 for low reverse leakage current to avoid that effect. D1 and D2 are shown in the schematic in [Figure 3](#) but are not populated in the default configuration.

EVALUATION BOARD SCHEMATIC AND ARTWORK

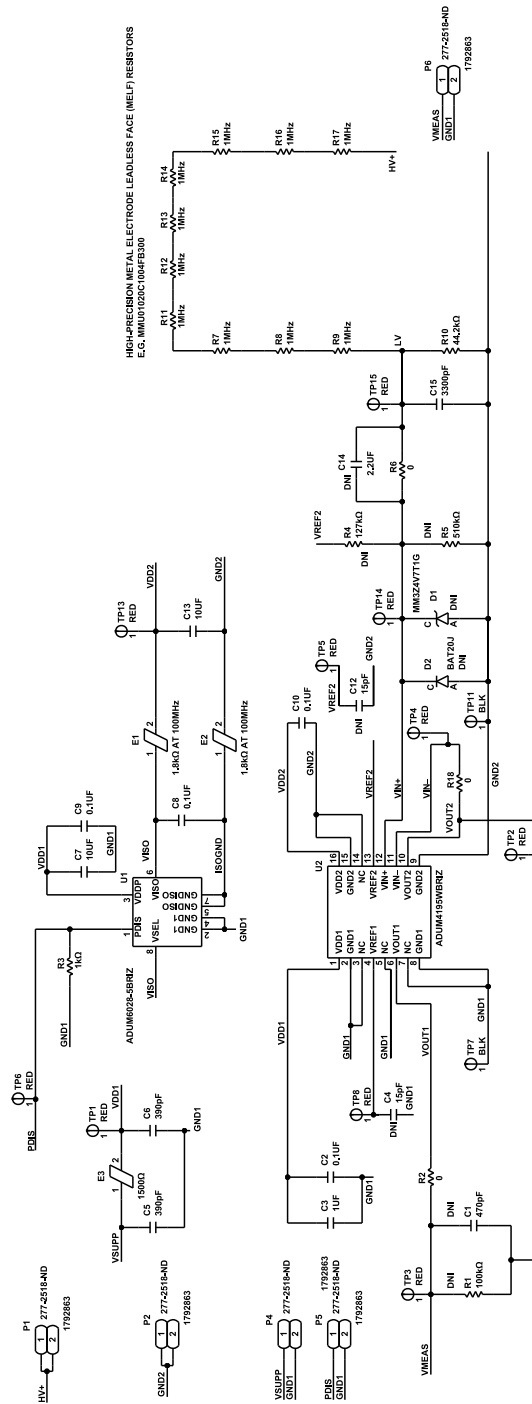


Figure 3. EVAL-ADuM4195EBZ Schematic



EVALUATION BOARD SCHEMATIC AND ARTWORK

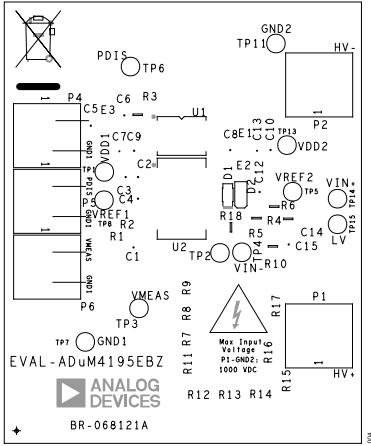


Figure 4. EVAL-ADuM4195EBZ Silkscreen

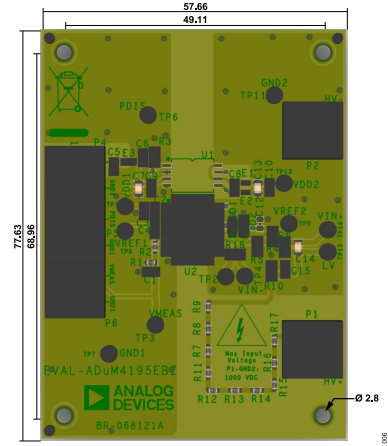


Figure 6. EVAL-ADuM4195EBZ Dimensions (mm)

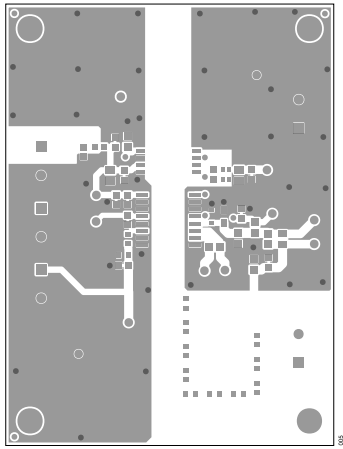


Figure 5. EVAL-ADuM4195EBZ Top Layer

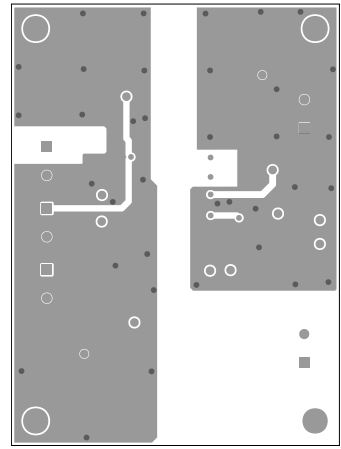


Figure 7. EVAL-ADuM4195EBZ Bottom Layer

## ORDERING INFORMATION

## BILL OF MATERIALS

Table 3. Bill of Materials

Qty	Reference Designator	Description	Manufacturer	Part Number <sup>1</sup>
1		PCB	Analog Devices, Inc.	08_068159a
1	C1	Ceramic capacitors (CAP CER), 470 pF, 25 V, 10% X7R, 0603	AVX Corporation	06033C471KAZ2A, DNP
4	C2, C8, C9, C11	CAP CER, 0.1 µF, 16 V, 10% X7R, 0603	WURTH Elektronik	885012
2	C4, C12	CAP CER, 15 pF, 16 V, 5% X7R, 0603	WURTH Elektronik	885012000000, DNP
2	C7, C13	CAP CER, 10 µF, 10 V, 10% X7R, 0805	WURTH Elektronik	885012
1	C14	CAP CER, 2.2 µF, 10 V, 10% X5R, 0805	Taiyo Yuden	LMK212BJ225KD-T, DNP
1	C15	CAP CER, 3300 pF, 50 V, 10% X7R, 0603, AEC-Q200, low effective series resistance (ESR)	TDK	CGA3E2X7R1H332K080AA
1	C3	CAP CER, 1 µF, 16 V, 20% X7R, 0603	AVX Corporation	0603YC105MAT2A
2	C5, C6	CAP CER, 390 pF, 16 V, 10% X7R, 0603	AVX Corporation	0603YC391KAT2A
1	D1	Diode Schottky, BAT20J, 23 V, SOD-323	STMicroelectronics	BAT20J, DNP
1	D2	Diode ZENER, 4.7 V, 1/5 W, SOD323	Onsemi	MM3Z4V7T1G, DNP
2	E1, E2	Inductor, ferrite bead, 2.2 Ω, maximum DC resistance, 0.2 A	Murata	BLM15HD182SN1D
1	E3	Inductor, chip ferrite bead, 0603	Murata	BLM18HE152SN1D
5	P1, P2, P4, P5, P6	Connector for PCB (CONN-PCB), two point-of-sale (POS) terminal blocks, 5 mm pitch	Phoenix Contact	1792863
1	R1	Resistors (RES), surface-mount device (SMD), 100 kΩ, 1% 1/10 W, 0603, AEC-Q200	Vishay	CRCW0603100KFKEA, DNP
1	R10	RES SMD, 44.2 kΩ, 0.1% 1/8 W, 0805, AEC-Q200	Panasonic	ERA-6ARB4422V
10	R7, R8, R9, R11, R12, R13, R14, R15, R16, R17	RES SMD, 1 MΩ, 1% 0.3 W, 0102, AEC-Q200, sulfur resistant	Vishay	MMU01020C1004FB300
1	R2	RES SMD, 0 Ω, 0603, AEC-Q200	Vishay	CRCW0603000ZRT1
1	R3	RES SMD, 1 kΩ, 1% 1/8 W, 0805, AEC-Q200	Panasonic	ERJ-6ENF1001V
1	R4	RES SMD, 127 kΩ, 1% 1/8 W, 0805, AEC-Q200	Panasonic	ERJ-6ENF1273V, DNP
1	R6	RES SMD, 0 Ω, 1/8 W, 0805, AEC-Q200	Panasonic	ERJ-6GEY0R00V
1	R5	RES SMD, 510 kΩ, 1% 1/8 W, 0805, AEC-Q200	Stackpole	RMCF0805FT510K, DNP
9	TP1, TP2, TP3, TP4, TP5, TP6, TP8, TP13, TP14, TP15	CONN-PCB, test point red	Vero Technologies	20-313137
2	TP7, TP11	CONN-PCB, test point black	Vero Technologies	20-2137
1	U1	IC, Analog Devices, low emission, 5 kV, isolated DC to DC converter	Analog Devices	ADUM6028-5BRIZ
1	U2	IC, Analog Devices, high-impedance, isolated amplifier	Analog Devices	ADuM4195BRQZ

<sup>1</sup> DNP means do not populate.

**ORDERING INFORMATION****NOTES****ESD Caution**

**ESD (electrostatic discharge) sensitive device.** Charged devices and circuit boards can discharge without detection. Although this product features patented or proprietary protection circuitry, damage may occur on devices subjected to high energy ESD. Therefore, proper ESD precautions should be taken to avoid performance degradation or loss of functionality.

**Legal Terms and Conditions**

By using the evaluation board discussed herein (together with any tools, components documentation or support materials, the "Evaluation Board"), you are agreeing to be bound by the terms and conditions set forth below ("Agreement") unless you have purchased the Evaluation Board, in which case the Analog Devices Standard Terms and Conditions of Sale shall govern. Do not use the Evaluation Board until you have read and agreed to the Agreement. Your use of the Evaluation Board shall signify your acceptance of the Agreement. This Agreement is made by and between you ("Customer") and Analog Devices, Inc. ("ADI"), with its principal place of business at Subject to the terms and conditions of the Agreement, ADI hereby grants to Customer a free, limited, personal, temporary, non-exclusive, non-sublicensable, non-transferable license to use the Evaluation Board FOR EVALUATION PURPOSES ONLY. Customer understands and agrees that the Evaluation Board is provided for the sole and exclusive purpose referenced above, and agrees not to use the Evaluation Board for any other purpose. Furthermore, the license granted is expressly made subject to the following additional limitations: Customer shall not (i) rent, lease, display, sell, transfer, assign, sublicense, or distribute the Evaluation Board; and (ii) permit any Third Party to access the Evaluation Board. As used herein, the term "Third Party" includes any entity other than ADI, Customer, their employees, affiliates and in-house consultants. The Evaluation Board is NOT sold to Customer; all rights not expressly granted herein, including ownership of the Evaluation Board, are reserved by ADI. CONFIDENTIALITY. This Agreement and the Evaluation Board shall all be considered the confidential and proprietary information of ADI. Customer may not disclose or transfer any portion of the Evaluation Board to any other party for any reason. Upon discontinuation of use of the Evaluation Board or termination of this Agreement, Customer agrees to promptly return the Evaluation Board to ADI. ADDITIONAL RESTRICTIONS. Customer may not disassemble, decompile or reverse engineer chips on the Evaluation Board. Customer shall inform ADI of any occurred damages or any modifications or alterations it makes to the Evaluation Board, including but not limited to soldering or any other activity that affects the material content of the Evaluation Board. Modifications to the Evaluation Board must comply with applicable law, including but not limited to the RoHS Directive. TERMINATION. ADI may terminate this Agreement at any time upon giving written notice to Customer. Customer agrees to return to ADI the Evaluation Board at that time. LIMITATION OF LIABILITY. THE EVALUATION BOARD PROVIDED HEREUNDER IS PROVIDED "AS IS" AND ADI MAKES NO WARRANTIES OR REPRESENTATIONS OF ANY KIND WITH RESPECT TO IT. ADI SPECIFICALLY DISCLAIMS ANY REPRESENTATIONS, ENDORSEMENTS, GUARANTEES, OR WARRANTIES, EXPRESS OR IMPLIED, RELATED TO THE EVALUATION BOARD INCLUDING, BUT NOT LIMITED TO, THE IMPLIED WARRANTY OF MERCHANTABILITY, TITLE, FITNESS FOR A PARTICULAR PURPOSE OR NON-INFRINGEMENT OF INTELLECTUAL PROPERTY RIGHTS. IN NO EVENT WILL ADI AND ITS LICENSORS BE LIABLE FOR ANY INCIDENTAL, SPECIAL, INDIRECT, OR CONSEQUENTIAL DAMAGES RESULTING FROM CUSTOMER'S POSSESSION OR USE OF THE EVALUATION BOARD, INCLUDING BUT NOT LIMITED TO LOST PROFITS, DELAY COSTS, LABOR COSTS OR LOSS OF GOODWILL. ADI'S TOTAL LIABILITY FROM ANY AND ALL CAUSES SHALL BE LIMITED TO THE AMOUNT OF ONE HUNDRED US DOLLARS (\$100.00). EXPORT. Customer agrees that it will not directly or indirectly export the Evaluation Board to another country, and that it will comply with all applicable United States federal laws and regulations relating to exports. GOVERNING LAW. This Agreement shall be governed by and construed in accordance with the substantive laws of the Commonwealth of Massachusetts (excluding conflict of law rules). Any legal action regarding this Agreement will be heard in the state or federal courts having jurisdiction in Suffolk County, Massachusetts, and Customer hereby submits to the personal jurisdiction and venue of such courts. The United Nations Convention on Contracts for the International Sale of Goods shall not apply to this Agreement and is expressly disclaimed.

