

Evaluating the ADL8106 GaAs, pHEMT, Low Noise Amplifier, 18 GHz to 54 GHz

FEATURES

- ▶ 4-layer, Rogers 4003C evaluation board
- ▶ End launch, 1.85 mm RF connectors
- ▶ Through calibration path (depopulated)

EVALUATION KIT CONTENTS

- ▶ ADL8106-EVALZ evaluation board

EQUIPMENT NEEDED

- ▶ RF signal generator
- ▶ RF spectrum analyzer
- ▶ RF network analyzer
- ▶ 3 V, 300 mA power supply
- ▶ 0 V to -2 V, ± 1 mA power supply

GENERAL DESCRIPTION

The ADL8106-EVALZ is a 4-layer printed circuit board (PCB). The substrate between the top layer and the first internal layer is made from Rogers 4003C. The internal and bottom side layers are all ground.

The RFIN and RFOUT ports on the ADL8106-EVALZ are populated with 1.85 mm, female coaxial connectors, and the respective RF traces have a 50 Ω characteristic impedance. The ADL8106-EVALZ is populated with components suitable for use over the entire -40°C to +85°C operating temperature range of the [ADL8106](#).

To calibrate out board trace losses, a through calibration path is provided between the CAL1 and CAL2 connectors. CAL1 and CAL2 must be populated with 1.85 mm, female coaxial connectors (for part number see [Table 2](#)). The power and bias voltages are applied to the surface-mounted technology (SMT) test points, VDD1, VDD2, and VGG.

The RF traces are 50 Ω , grounded, coplanar waveguide. The package ground leads and the exposed pad directly connect to the ground plane. Multiple vias are used to connect the ground planes with particular focus on the area directly beneath the ground pad. For full details on the ADL8106, see the ADL8106 data sheet, which must be consulted in conjunction with this user guide when using the ADL8106-EVALZ.

EVALUATION BOARD PHOTOGRAPHS

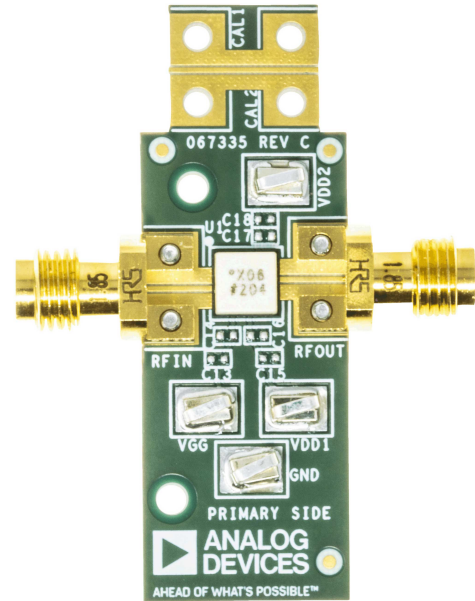


Figure 1. ADL8106-EVALZ Top Side

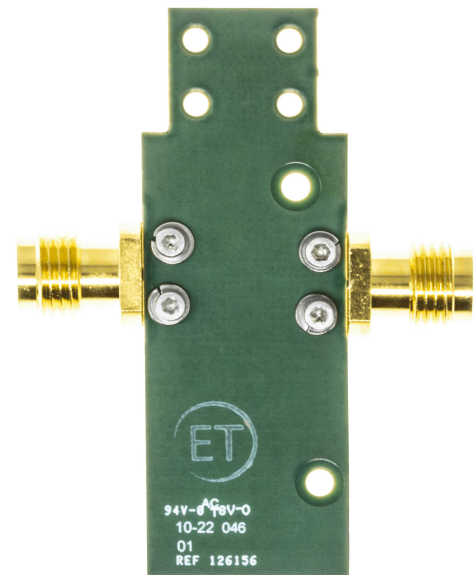


Figure 2. ADL8106-EVALZ Bottom Side

TABLE OF CONTENTS

Features.....	1	Operating the ADL8106-EVALZ.....	3
Evaluation Kit Contents.....	1	Power-Up and Power-Down Sequencing.....	4
Equipment Needed.....	1	Through Calibration Path.....	4
General Description.....	1	Evaluation Board Schematic and Artwork.....	5
Evaluation Board Photographs.....	1	Ordering Information.....	6
Evaluation Board Hardware.....	3	Bill of Materials.....	6

REVISION HISTORY

8/2022—Revision 0: Initial Version

EVALUATION BOARD HARDWARE

OPERATING THE ADL8106-EVALZ

A 3 V power supply that can source up to 300 mA is required to provide the main bias to the ADL8106-EVALZ. Connect the 3 V power supply to the VDD1 and VDD2 SMT test points. In addition,

a 0 V to -2 V power supply that can source or sink up to 1 mA is required to provide bias control. Connect the -2 V power supply to the VGG SMT test point.

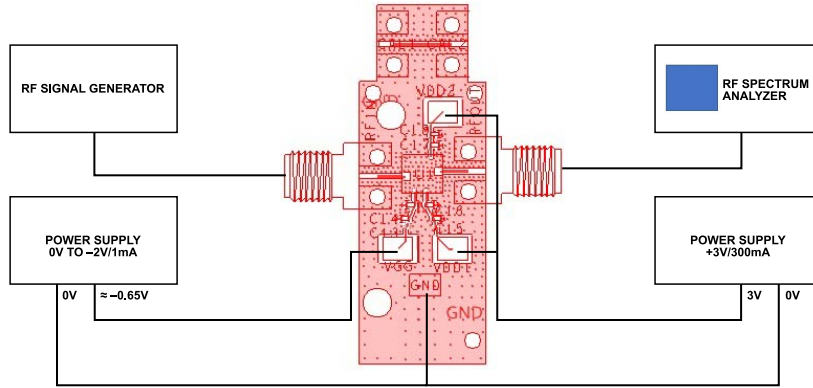


Figure 3. Operating the ADL8106-EVALZ

EVALUATION BOARD HARDWARE

POWER-UP AND POWER-DOWN SEQUENCING

To avoid damaging the device, careful attention must be paid to the sequencing of the RF input, the gate bias voltage, and the drain bias voltage. See the following sections for the recommended power-up sequence and power-down sequence.

Power-Up Sequence

Use the following biasing sequence during power-up:

1. Ensure that all power supplies and the signal generator are off.
2. Connect GND to RF and dc ground.
3. Set VGG to -2 V.
4. Set VDD1 and VDD2 to 3 V.
5. Increase VGG until the total current into VDD1 and VDD2 is 120 mA (this current is achieved with VGG approximately equal to -0.65 V).
6. Turn on the RF input signal.

If the target VGG voltage is known in advance, VGG can be set to that level directly in Step 3, and Step 5 can be skipped.

Power-Down Sequence

Use the following biasing sequence during power-down:

1. Turn off the RF input signal.
2. Decrease VGG to -2 V.
3. Decrease VDD1 and VDD2 to 0 V.
4. Increase VGG to 0 V.

THROUGH CALIBRATION PATH

The ADL8106-EVALZ includes a calibration path (see [Figure 5](#)). CAL1 and CAL2 must be populated with RF connectors to use the through calibration path. [Figure 4](#) shows the insertion loss, input return loss, and output return loss of the through calibration path. [Table 1](#) lists the insertion loss of the through calibration path.

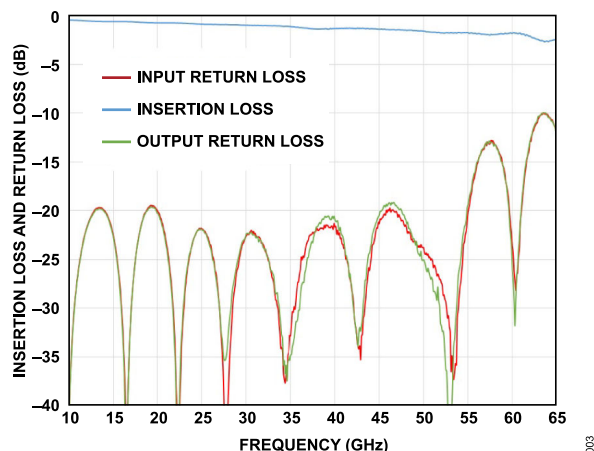


Figure 4. Insertion Loss and Return Loss (Input and Output) of the Through Calibration Path

Table 1. Insertion Loss of the Through Calibration Path

Frequency (GHz)	Insertion Loss (dB)
10	-0.46
15	-0.61
20	-0.74
25	-0.88
30	-0.99
35	-1.11
40	-1.30
45	-1.39
50	-1.57
55	-1.72
60	-1.78
65	-2.4

EVALUATION BOARD SCHEMATIC AND ARTWORK

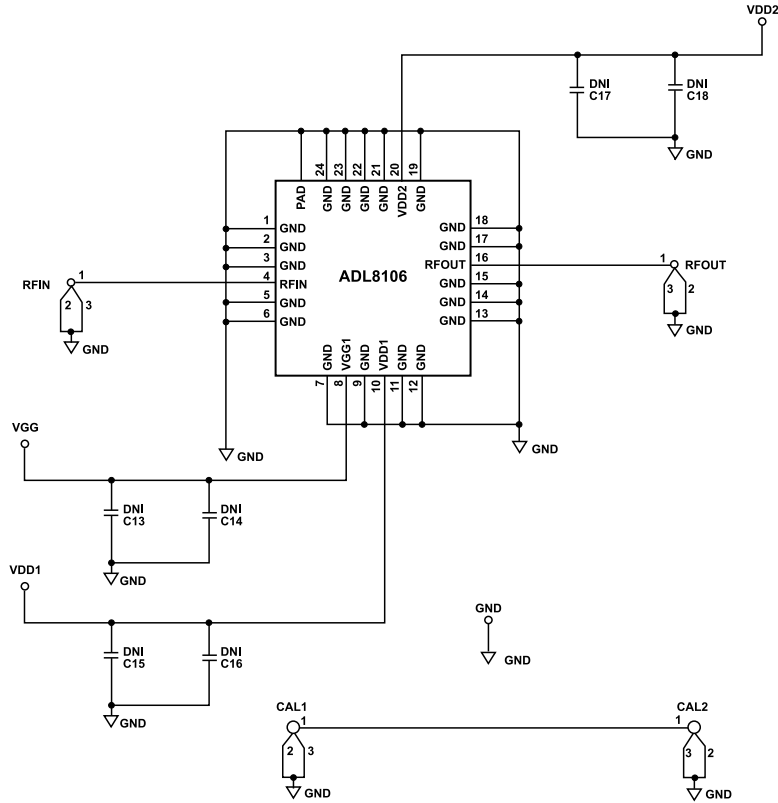


Figure 5. ADL8106-EVALZ Schematic

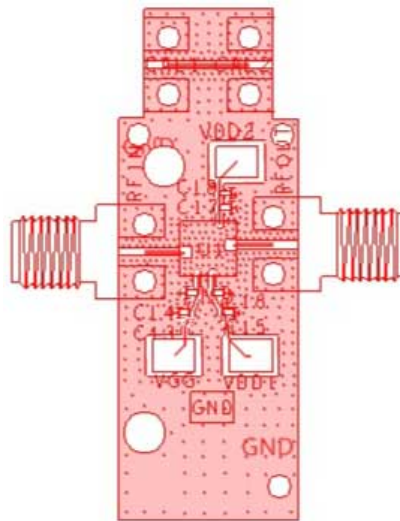


Figure 6. ADL8106-EVALZ Assembly Drawing (CAL1 and CAL2 Not Installed)

ORDERING INFORMATION

BILL OF MATERIALS

Table 2.

Reference Designator	Description	Manufacturer	Part Number
C13, C15, C18	Capacitors, 0402 (do not install (DNI))	Not applicable	Not applicable
C14, C16, C17	Capacitors, 0402 (DNI)	Not applicable	Not applicable
RFIN, RFOUT	Coaxial connectors, PCB header, 1.85 mm, 50 Ω, 67 GHz	Hirose Electric Co.	HV-LR-SR2(12)
VDD1, VDD2, VGG, GND	Connectors, SMT test points	Keystone Electronics	5016
CAL1, CAL2	Coaxial connectors, PCB header, 1.85 mm, 50 Ω, 67 GHz (not installed)	Hirose Electric Co.	HV-LR-SR2(12)
U1	GaAs, pHEMT, low noise amplifier, 18 GHz to 54 GHz	Analog Devices, Inc.	ADL8106ACEZ

**ESD Caution**

ESD (electrostatic discharge) sensitive device. Charged devices and circuit boards can discharge without detection. Although this product features patented or proprietary protection circuitry, damage may occur on devices subjected to high energy ESD. Therefore, proper ESD precautions should be taken to avoid performance degradation or loss of functionality.

Legal Terms and Conditions

By using the evaluation board discussed herein (together with any tools, components documentation or support materials, the "Evaluation Board"), you are agreeing to be bound by the terms and conditions set forth below ("Agreement") unless you have purchased the Evaluation Board, in which case the Analog Devices Standard Terms and Conditions of Sale shall govern. Do not use the Evaluation Board until you have read and agreed to the Agreement. Your use of the Evaluation Board shall signify your acceptance of the Agreement. This Agreement is made by and between you ("Customer") and Analog Devices, Inc. ("ADI"), with its principal place of business at Subject to the terms and conditions of the Agreement, ADI hereby grants to Customer a free, limited, personal, temporary, non-exclusive, non-sublicensable, non-transferable license to use the Evaluation Board FOR EVALUATION PURPOSES ONLY. Customer understands and agrees that the Evaluation Board is provided for the sole and exclusive purpose referenced above, and agrees not to use the Evaluation Board for any other purpose. Furthermore, the license granted is expressly made subject to the following additional limitations: Customer shall not (i) rent, lease, display, sell, transfer, assign, sublicense, or distribute the Evaluation Board; and (ii) permit any Third Party to access the Evaluation Board. As used herein, the term "Third Party" includes any entity other than ADI, Customer, their employees, affiliates and in-house consultants. The Evaluation Board is NOT sold to Customer; all rights not expressly granted herein, including ownership of the Evaluation Board, are reserved by ADI. CONFIDENTIALITY. This Agreement and the Evaluation Board shall all be considered the confidential and proprietary information of ADI. Customer may not disclose or transfer any portion of the Evaluation Board to any other party for any reason. Upon discontinuation of use of the Evaluation Board or termination of this Agreement, Customer agrees to promptly return the Evaluation Board to ADI. ADDITIONAL RESTRICTIONS. Customer may not disassemble, decompile or reverse engineer chips on the Evaluation Board. Customer shall inform ADI of any occurred damages or any modifications or alterations it makes to the Evaluation Board, including but not limited to soldering or any other activity that affects the material content of the Evaluation Board. Modifications to the Evaluation Board must comply with applicable law, including but not limited to the RoHS Directive. TERMINATION. ADI may terminate this Agreement at any time upon giving written notice to Customer. Customer agrees to return to ADI the Evaluation Board at that time. LIMITATION OF LIABILITY. THE EVALUATION BOARD PROVIDED HEREUNDER IS PROVIDED "AS IS" AND ADI MAKES NO WARRANTIES OR REPRESENTATIONS OF ANY KIND WITH RESPECT TO IT. ADI SPECIFICALLY DISCLAIMS ANY REPRESENTATIONS, ENDORSEMENTS, GUARANTEES, OR WARRANTIES, EXPRESS OR IMPLIED, RELATED TO THE EVALUATION BOARD INCLUDING, BUT NOT LIMITED TO, THE IMPLIED WARRANTY OF MERCHANTABILITY, TITLE, FITNESS FOR A PARTICULAR PURPOSE OR NON-INFRINGEMENT OF INTELLECTUAL PROPERTY RIGHTS. IN NO EVENT WILL ADI AND ITS LICENSORS BE LIABLE FOR ANY INCIDENTAL, SPECIAL, INDIRECT, OR CONSEQUENTIAL DAMAGES RESULTING FROM CUSTOMER'S POSSESSION OR USE OF THE EVALUATION BOARD, INCLUDING BUT NOT LIMITED TO LOST PROFITS, DELAY COSTS, LABOR COSTS OR LOSS OF GOODWILL. ADI'S TOTAL LIABILITY FROM ANY AND ALL CAUSES SHALL BE LIMITED TO THE AMOUNT OF ONE HUNDRED US DOLLARS (\$100.00). EXPORT. Customer agrees that it will not directly or indirectly export the Evaluation Board to another country, and that it will comply with all applicable United States federal laws and regulations relating to exports. GOVERNING LAW. This Agreement shall be governed by and construed in accordance with the substantive laws of the Commonwealth of Massachusetts (excluding conflict of law rules). Any legal action regarding this Agreement will be heard in the state or federal courts having jurisdiction in Suffolk County, Massachusetts, and Customer hereby submits to the personal jurisdiction and venue of such courts. The United Nations Convention on Contracts for the International Sale of Goods shall not apply to this Agreement and is expressly disclaimed.

