

Evaluating the ADG2404, 0.62Ω On Resistance, ±15V, +12V, ±5V, +5V/–12V, Quad SPST Switch
FEATURES

- ▶ Low R_{ON} , 0.62Ω
- ▶ High continuous current of up to 847mA
- ▶ Flat R_{ON} across signal range, 0.12Ω
- ▶ Improved balance between on resistance and on capacitance
- ▶ 1.8V logic compatibility
- ▶ 16-lead, 4mm × 4mm LFCSP
- ▶ Pin to pin compatible with the [ADG1404](#)
- ▶ Fully specified at ±15V, +12V, ±5V, and +5V/–12V
- ▶ Operational with asymmetric power supplies
- ▶ V_{SS} to $V_{DD} - 2V$ analog signal range

EVALUATION KIT CONTENTS

- ▶ EVAL-ADG2404 evaluation board

DOCUMENTS NEEDED

- ▶ [ADG2404](#) data sheet

EQUIPMENT NEEDED

- ▶ DC voltage source
 - ▶ ±15 V ± 10%, and/or ±5 V ± 10%, for dual-supply
 - ▶ +12 V ± 10% for single-supply
- ▶ Optional digital logic-supply
- ▶ Analog signal source
- ▶ Method to measure voltage, such as a digital multimeter (DMM) or oscilloscope

GENERAL DESCRIPTION

The EVAL-ADG2404 is the evaluation board for the ADG2404. The ADG2404 is an analog 4:1 multiplexer. The ADG2404 switches one of four inputs to a common output, D, as determined by the 3-bit binary address line, A0, A1, and EN. For use in multiplexer applications, switches exhibit break-before-make switching action.

Each switch conducts equally well in both directions when on, and each switch has an input signal range that extends from V_{SS} to $V_{DD} - 2V$. When the switches are disabled, signal levels up to the supplies are blocked. The ADG2404 does not have a V_L pin. The digital inputs are compatible with 1.8V logic inputs over the full-operating supply range. The on-resistance profile is very flat over the full-analog input range, which ensures good linearity and low distortion when switching audio signals.

[Figure 1](#) shows the EVAL-ADG2404 evaluation board. The ADG2404 is located in the center of the evaluation board and wire screw terminals are provided to connect to each of the source and drain pins. Three screw terminals power the device and a fourth terminal provides users with a defined digital logic-supply voltage, if required. Alternatively, the digital logic-supply voltage can be supplied from the [ADP7142](#) that is on the board.

Full specifications on the ADG2404 are available in the ADG2404 data sheet available from Analog Devices, Inc., and must be consulted with this user guide when using the EVAL-ADG2404 evaluation board.

TABLE OF CONTENTS

Features.....	1	Power Supplies.....	4
Evaluation Kit Contents.....	1	Input Signals.....	4
Documents Needed.....	1	Link Options.....	4
Equipment Needed.....	1	Digital Interface Options.....	4
General Description.....	1	Evaluation Board Schematics and Artwork.....	5
EVAL-ADG2404 Evaluation Board Layout.....	3	Ordering Information.....	8
Evaluation Board Hardware.....	4	Bill of Materials.....	8

REVISION HISTORY

4/2025—Revision 0: Initial Version

EVAL-ADG2404 EVALUATION BOARD LAYOUT

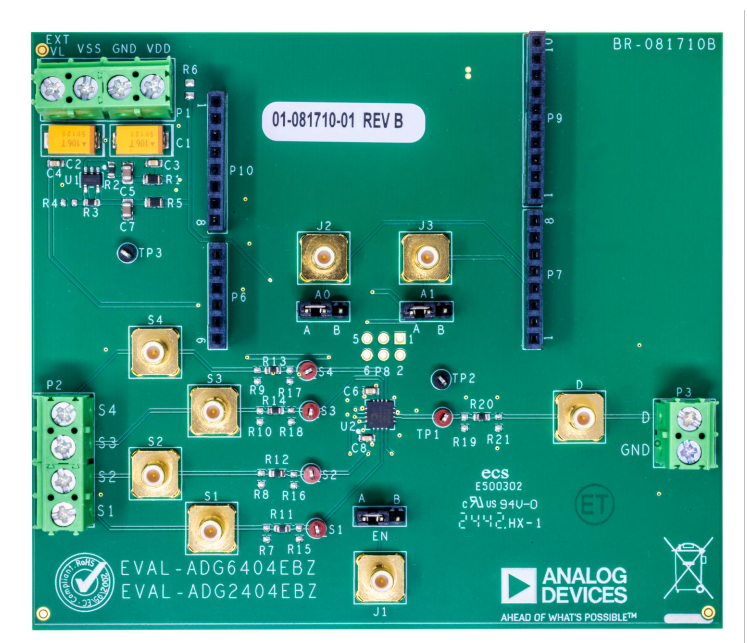


Figure 1. Evaluation Board Layout

EVALUATION BOARD HARDWARE

POWER SUPPLIES

Connector P1 provides access to the supply pins on the [ADG2412](#). V_{DD} , GND, and V_{SS} on P1 link to the appropriate pins on the ADG2404. For dual-supply voltages, the EVAL-ADG2404 evaluation board can be powered from $\pm 13.5V$ to $\pm 16.5V$ or from $\pm 4.5V$ to $\pm 5.5V$. For single-supply voltages, the GND and V_{SS} terminals must be connected and V_{DD} between 10.8V to 13.2V. Additionally, 5V from the [ADP7142](#) regulator can be supplied to digital pins of the ADG2404 via links EN, A0, and A1. To use the 5V from the ADP7142 for the logic inputs, then use the default setting of R5 populated and R6 not inserted. If there is a wish to supply a custom logic voltage via the EN, A0, and A1 headers, then EXT_VL on P1 can be supplied with a suitable logic voltage. To use EXT_VL on P1, do not insert R5 and populate R6.

INPUT SIGNALS

Screw connectors, P2, P3, P4, and P5 are provided to connect to both the source and drain pins of the ADG2404. Additional Subminiature Version B (SMB) connectors are available to connect cables to the source and drain pins.

Each trace on the source and drain side includes two sets of 0603 pads that can place a load on the signal path to ground. A 0Ω resistor is placed in the signal path and can be replaced with a user-defined value. The resistor combined with the 0603 pads can create a simple RC filter.

LINK OPTIONS

Several link options are provided on the EVAL-ADG2404 evaluation board. The functions of these link options are described in [Table 1](#). Position B ties to GND and sets the logic low, whereas Position A sets the logic high. The corresponding truth table is shown in [Table 2](#).

Table 1. ADG2404 Link Options

Link Number	Position	Description
EN	A	Device enabled, switch function set by A0 and A1 pins
	B	All switches off (disabled)
A0	A	Logic 1
	B	Logic 0
A1	A	Logic 1
	B	Logic 0

Table 2. ADG2404 Truth Table

EN	A1	A0	Connected Sx
B	X ¹	X	All switches off
A	B	B	S1
A	B	A	S2
A	A	B	S3
A	A	A	S4

¹ X = Don't care.

DIGITAL INTERFACE OPTIONS

The digital interface of the ADG2404 can be controlled either manually using the EN, A0, and A1 link headers or accessed by using the J1, J2, J3, and J4 SMB connectors. To use the SMB connectors, remove the EN, A0, and A1 link headers.

Connectors P6, P7, P9, and P10 can also be used with a controller board such as the SDP-K1 or Arduino. If a controller board is used to control the ADG2404, remove the EN, A0, and A1 link headers.

EVALUATION BOARD SCHEMATICS AND ARTWORK

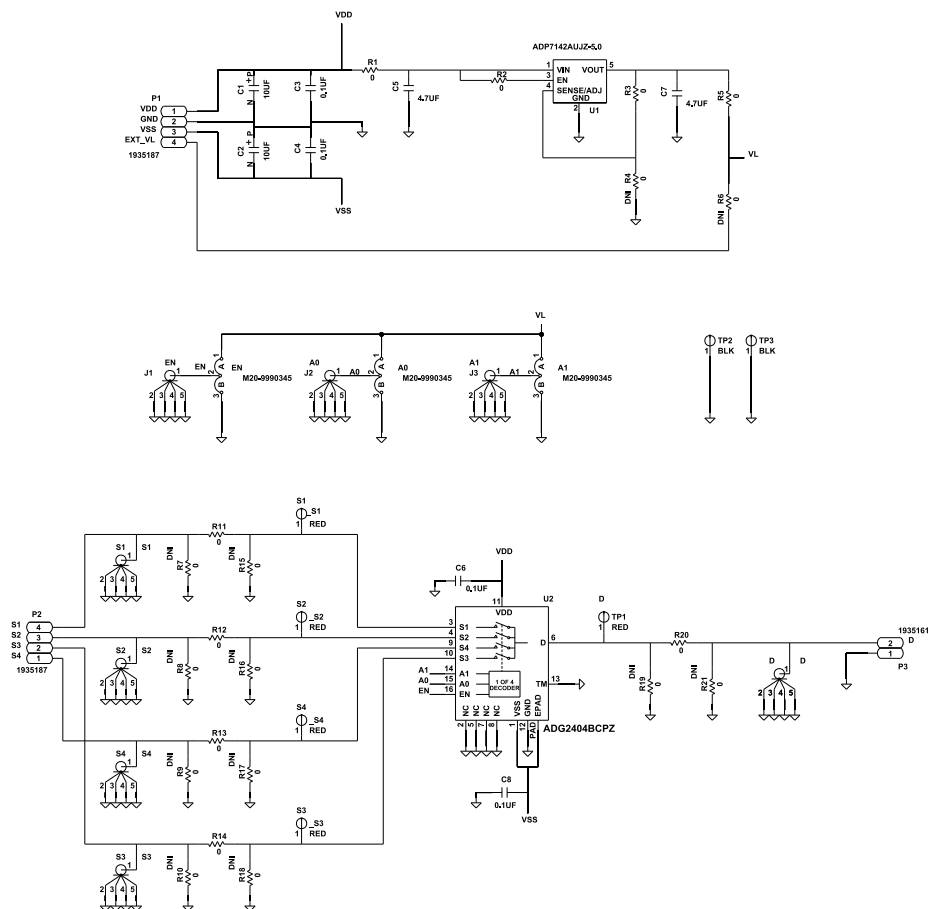


Figure 2. EVAL-ADG2404 Schematic Part 1

The schematic diagram illustrates the electrical connections for the SSQ-106-03-G-S module. It is divided into three main sections: POWER, ANALOG IN, and digital I/O.

POWER: The module's power pins (P10) are connected as follows: NC, IOREF, RESET, 3.3V, 5V, GND, and VIN. The 5V and VIN pins are connected to a common ground. The SSQ-106-03-G-S module is shown with its power pins connected to a common ground.

ANALOG IN: The module's analog input pins (P6) are connected to the SSQ-106-03-G-S module. The pins are labeled A0, A1, A2, A3, A4, and A5. The SSQ-106-03-G-S module is shown with its analog input pins connected to a common ground.

Digital I/O: The module's digital I/O pins (P8) are connected to the SSQ-106-03-G-S module. The pins are labeled ICSP, DNI, P8, 1, 2, 3, 4, 5, and 6. The SSQ-106-03-G-S module is shown with its digital I/O pins connected to a common ground.

The diagram also shows the internal circuitry of the module, including resistors (R1A, R2A, R3A, R4A, R5A, R6A) and a 24AA32A4/SN EEPROM. The EEPROM is connected to the module's digital I/O pins (P8) and its own pins (A0, A1, A2, VCC, WP, SCL, SDA, VSS).

003



EVALUATION BOARD SCHEMATICS AND ARTWORK

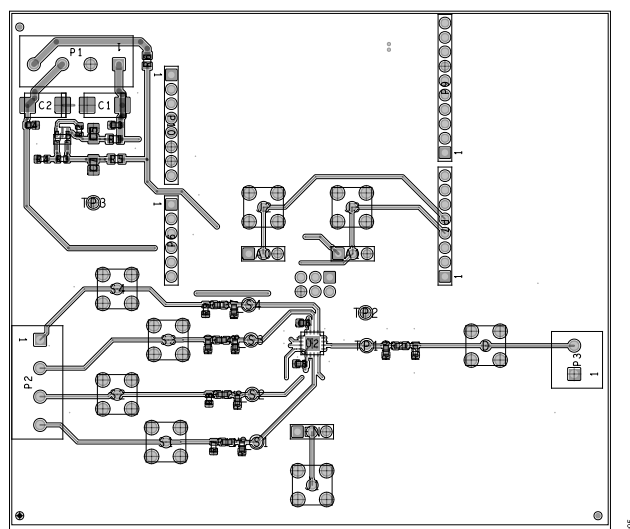


Figure 5. EVAL-ADG2404 Top Layer

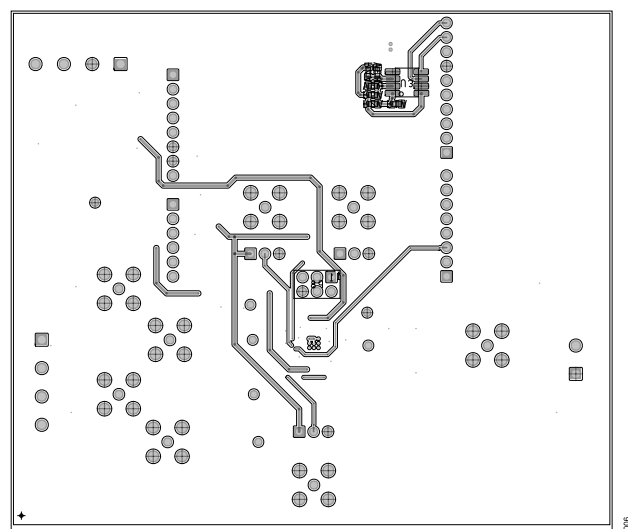


Figure 6. EVAL-ADG2404 Bottom Layer

ORDERING INFORMATION

BILL OF MATERIALS

Table 3. Bill of Materials

Reference Designator	Description	Manufacturer	Part Number
C3, C4, C6, C8	50V, 10 μ F tantalum capacitors, 7343-31, 0.8 Ω	AVX	TAJD106M050RNJ
	0.1 μ F, 50V, ceramic capacitors, X7R, 0603	Samsung	CL10B104KB8NNNC
C5, C7	4.7 μ F, 50V, ceramic capacitors, X5R, 0805	TDK	C2012X5R1H475K125AB
D, J1 to J3, and S1 to S4	SMB sockets	Amphenol	SMB1251B1-3GT30G-50
A0, A1, and EN	Jumper blocks using 3-pin SIP header	Harwin	M20-9990345
P1, P2	4-pin terminal, 5mm	Phoenix Contact	1935187
P3	2-pin terminal, 5mm	Phoenix Contact	1935161
P7, P10	Socket strips, square tails, 2.54mm pitch	Samtec	SSQ-108-03-G-S
P6	Socket strip, square tails, 2.54mm pitch	Samtec	SSQ-106-03-G-S
P9	Socket strip, square tails, 2.54mm pitch	Samtec	SSQ-110-03-G-S
R1, R5	0 Ω resistors, SMD, 1/8 W, 0805	Vishay	RCG08050000Z0EA
R2, R3, R11 to R14, and R20	0 Ω jumpers, SMD, 1/4 W, 0603, AEC-Q200	Vishay	CRCW06030000Z0EAHP
R1A to R6A	100k Ω resistors, SMD, 1%, 1/16 W, 0603	Multicomp (SPC)	MC 0.063W 0603 1% 100K
TP1, _S1 to _S4	Red PCB test points	Keystone Electronics	5001
TP2, TP3	Black PCB test points	Keystone Electronics	5001
U1	40V, 200mA, low noise, CMOS LDO linear regulator	Analog Devices	ADP7142AUJZ-5.0-R7
U2	0.62 Ω R _{ON} , \pm 15V, +12V, \pm 5V, +5V/-12V, quad SPST switch	Analog Devices	ADG2404BCPZ
U3	IC, 32kb serial EEPROM	Microchip Technology	24AA32A-I/SN

**ESD Caution**

ESD (electrostatic discharge) sensitive device. Charged devices and circuit boards can discharge without detection. Although this product features patented or proprietary protection circuitry, damage may occur on devices subjected to high energy ESD. Therefore, proper ESD precautions should be taken to avoid performance degradation or loss of functionality.

Legal Terms and Conditions

By using the evaluation board discussed herein (together with any tools, components documentation or support materials, the "Evaluation Board"), you are agreeing to be bound by the terms and conditions set forth below ("Agreement") unless you have purchased the Evaluation Board, in which case the Analog Devices Standard Terms and Conditions of Sale shall govern. Do not use the Evaluation Board until you have read and agreed to the Agreement. Your use of the Evaluation Board shall signify your acceptance of the Agreement. This Agreement is made by and between you ("Customer") and Analog Devices, Inc. ("ADI"), with its principal place of business at Subject to the terms and conditions of the Agreement, ADI hereby grants to Customer a free, limited, personal, temporary, non-exclusive, non-sublicensable, non-transferable license to use the Evaluation Board FOR EVALUATION PURPOSES ONLY. Customer understands and agrees that the Evaluation Board is provided for the sole and exclusive purpose referenced above, and agrees not to use the Evaluation Board for any other purpose. Furthermore, the license granted is expressly made subject to the following additional limitations: Customer shall not (i) rent, lease, display, sell, transfer, assign, sublicense, or distribute the Evaluation Board; and (ii) permit any Third Party to access the Evaluation Board. As used herein, the term "Third Party" includes any entity other than ADI, Customer, their employees, affiliates and in-house consultants. The Evaluation Board is NOT sold to Customer; all rights not expressly granted herein, including ownership of the Evaluation Board, are reserved by ADI. CONFIDENTIALITY. This Agreement and the Evaluation Board shall all be considered the confidential and proprietary information of ADI. Customer may not disclose or transfer any portion of the Evaluation Board to any other party for any reason. Upon discontinuation of use of the Evaluation Board or termination of this Agreement, Customer agrees to promptly return the Evaluation Board to ADI. ADDITIONAL RESTRICTIONS. Customer may not disassemble, decompile or reverse engineer chips on the Evaluation Board. Customer shall inform ADI of any occurred damages or any modifications or alterations it makes to the Evaluation Board, including but not limited to soldering or any other activity that affects the material content of the Evaluation Board. Modifications to the Evaluation Board must comply with applicable law, including but not limited to the RoHS Directive. TERMINATION. ADI may terminate this Agreement at any time upon giving written notice to Customer. Customer agrees to return to ADI the Evaluation Board at that time. LIMITATION OF LIABILITY. THE EVALUATION BOARD PROVIDED HEREUNDER IS PROVIDED "AS IS" AND ADI MAKES NO WARRANTIES OR REPRESENTATIONS OF ANY KIND WITH RESPECT TO IT. ADI SPECIFICALLY DISCLAIMS ANY REPRESENTATIONS, ENDORSEMENTS, GUARANTEES, OR WARRANTIES, EXPRESS OR IMPLIED, RELATED TO THE EVALUATION BOARD INCLUDING, BUT NOT LIMITED TO, THE IMPLIED WARRANTY OF MERCHANTABILITY, TITLE, FITNESS FOR A PARTICULAR PURPOSE OR NON-INFRINGEMENT OF INTELLECTUAL PROPERTY RIGHTS. IN NO EVENT WILL ADI AND ITS LICENSORS BE LIABLE FOR ANY INCIDENTAL, SPECIAL, INDIRECT, OR CONSEQUENTIAL DAMAGES RESULTING FROM CUSTOMER'S POSSESSION OR USE OF THE EVALUATION BOARD, INCLUDING BUT NOT LIMITED TO LOST PROFITS, DELAY COSTS, LABOR COSTS OR LOSS OF GOODWILL. ADI'S TOTAL LIABILITY FROM ANY AND ALL CAUSES SHALL BE LIMITED TO THE AMOUNT OF ONE HUNDRED US DOLLARS (\$100.00). EXPORT. Customer agrees that it will not directly or indirectly export the Evaluation Board to another country, and that it will comply with all applicable United States federal laws and regulations relating to exports. GOVERNING LAW. This Agreement shall be governed by and construed in accordance with the substantive laws of the Commonwealth of Massachusetts (excluding conflict of law rules). Any legal action regarding this Agreement will be heard in the state or federal courts having jurisdiction in Suffolk County, Massachusetts, and Customer hereby submits to the personal jurisdiction and venue of such courts. The United Nations Convention on Contracts for the International Sale of Goods shall not apply to this Agreement and is expressly disclaimed. All Analog Devices products contained herein are subject to release and availability.