

Evaluating the AD7175-8 24-Bit, 8-/16-Channel, 250kSPS, Sigma-Delta ADC with True Rail-to-Rail Buffers

**FEATURES**

- ▶ Full featured evaluation board for the AD7175-8
- ▶ PC control in conjunction with the Analog Devices, Inc., SDP-K1 board (EVAL-SDP-CK1Z)
- ▶ PC software for control and data analysis (time domain)
- ▶ Standalone capability

**DOCUMENTS NEEDED**

- ▶ [AD7175-8 data sheet](#)

**REQUIRED SOFTWARE**

- ▶ [ACE software](#) (see the [Installation Guide](#) section)

**EQUIPMENT NEEDED**

- ▶ EVAL-AD7175-8ARDZ
- ▶ [EVAL-SDP-CK1Z](#)
- ▶ DC signal source
- ▶ USB cable
- ▶ PC running Windows with USB 2.0 port

**ONLINE RESOURCES**

- ▶ [Schematic, PCB layout, and bill of materials](#)

**EVALUATION BOARD**

**GENERAL DESCRIPTION**

The EVAL-AD7175-8ARDZ evaluation board features the AD7175-8, a 24-bit, 250kSPS analog-to-digital converter (ADC) with integrated analog input buffers, on-board power supply regulation, and an external amplifier section for amplifier evaluation. A 5V USB is regulated to 5V and 3.3V; this supplies the AD7175-8 and support components. The evaluation board connects to a USB port via the system demonstration platform (SDP) controller board EVAL-SDP-CK1Z (SDP-K1).

The AD717x ACE software fully configures the AD7175-8 device functionality via a user accessible register interface and provides DC time domain analysis in the form of waveform graphs, histograms, and associated noise analysis for ADC performance evaluation. Full specifications on the AD7175-8 are available in the product data sheet, which must be consulted in conjunction with this user guide when working with the evaluation board. Full details for the SDP-K1 controller board are available on the Analog Devices website.

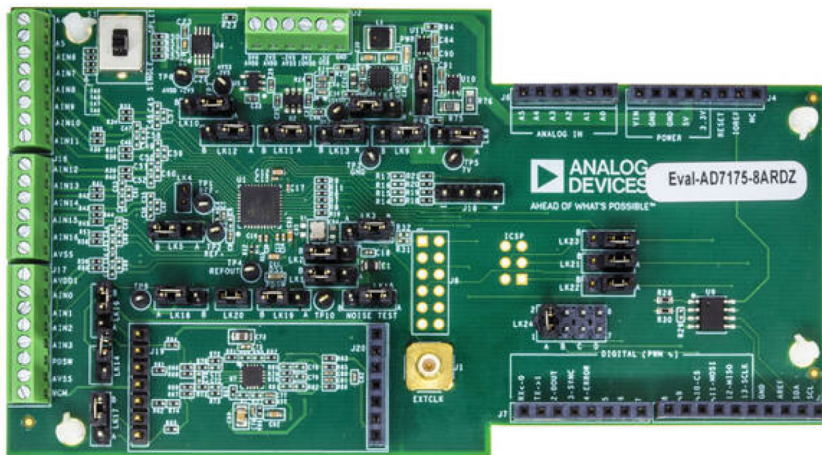


Figure 1.

**TABLE OF CONTENTS**

Features.....	1	Setup Procedures.....	5
Documents Needed.....	1	Hardware Link Options.....	5
Required Software.....	1	On-Board Connections.....	6
Equipment Needed.....	1	Power Supplies.....	7
Online Resources.....	1	Serial Interface.....	8
General Description.....	1	Analog Inputs.....	8
Evaluation Board.....	1	Reference Options.....	8
Evaluation Board Block Diagram.....	3	Selecting the Reference Source.....	8
Quick Start Guide.....	4	Software Guide.....	10
Recommended Quick Start Guide.....	4	ACE Software.....	10
Quick Start Measurement.....	4	Installation Guide.....	10
Hardware Guide.....	5	Notes.....	16
Device Description.....	5		

**REVISION HISTORY****3/2025—Revision A: Initial Version**  
.....

EVALUATION BOARD BLOCK DIAGRAM

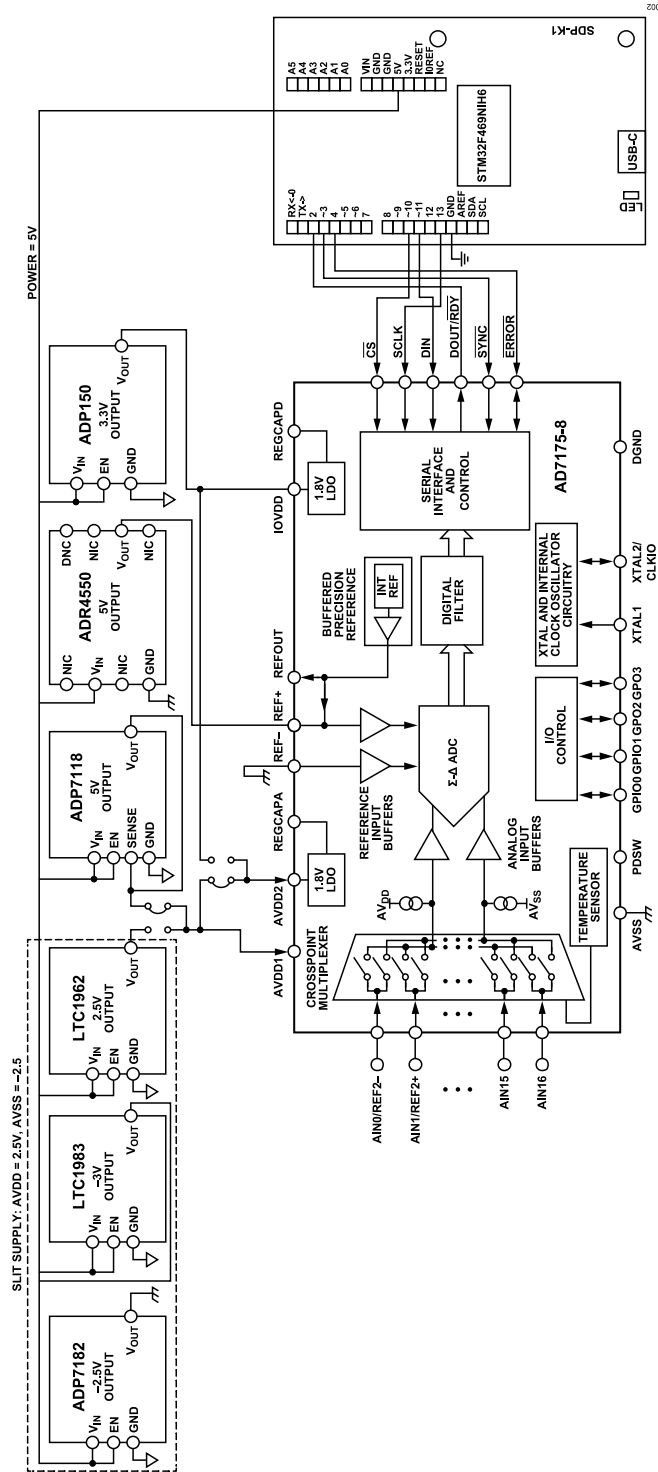


Figure 2. Evaluation Board Block Diagram

## QUICK START GUIDE

### RECOMMENDED QUICK START GUIDE

Use the following procedure to set up the evaluation board:

1. With the [SDP-K1](#) board disconnected from the USB port of the PC, install the [ACE](#) software (can be downloaded online). Restart the PC after the software installation is complete (for complete software installation instructions, see the [Installing the ACE Software](#) section).
2. Connect the SDP-K1 board to the EVAL-AD7175-8ARDZ board via Arduino connector.
3. Connect the SDP-K1 board to the PC via the USB cable. For Windows® XP, it may be necessary to search for the SDP drivers. Choose to automatically search for the drivers for the SDP board if prompted by the operating system.
4. Launch the ACE software.

### QUICK START MEASUREMENT

Use the following procedure to capture data quickly:

1. Connect the DC signal source to the selected voltage input (for example, AIN0 and AIN1 for differential input).
2. Launch the ACE software and select the **AD7175-8 Board** (see [Figure 5](#)).
3. Double click the **AD7175-8** chip then click the **Proceed to Analysis** (see [Figure 5](#)).
4. In the **Waveform** tab, the user can capture and measure the data by clicking **Run Once** (Label 14, [Figure 13](#)).

The **Sample Count** in the top left area of the **Waveform** tab (Label 12, [Figure 13](#)) sets the number of samples collected in each batch.

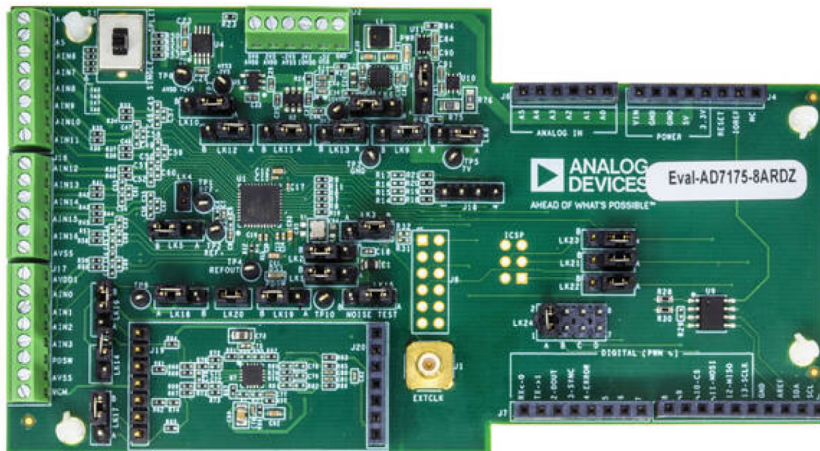


Figure 3. Evaluation Board Hardware Configuration

## HARDWARE GUIDE

### DEVICE DESCRIPTION

The [AD7175-8](#) is a highly accurate, high resolution, multiplexed, 8-/16-channel (full/pseudodifferential)  $\Sigma$ - $\Delta$  ADC. The AD7175-8 has a maximum channel-to-channel scan rate of 50kSPS (20 $\mu$ s) for fully settled data. The output data rates range from 5SPS to 250kSPS. The device includes integrated analog input and reference buffers, an integrated precision 2.5V reference, and an integrated oscillator.

### SETUP PROCEDURES

After following the instructions in the [Installing the ACE Software](#) section, set up the evaluation board and the [SDP-K1](#) board as detailed in this section.

The [ACE](#) software and AD717x board plug-in must be installed before connecting the EVAL-AD7175-8ARDZ and the EVAL-SDP-

CK1Z board to the USB port of the PC to ensure that the PC recognizes the evaluation system.

### Configuring the Evaluation and SDP Boards

Use the following procedure to configure the boards:

1. Connect the SDP-K1 to the Arduino headers of the evaluation board.
2. Connect the SDP board to the PC using the USB cable.

### HARDWARE LINK OPTIONS

See [Table 1](#) for all the EVAL-AD7175-8ARDZ link options.

**Table 1. Hardware Link Options**

Link Number	Default Position	Description
LK1	B	Selects the voltage applied to the AVDD1 pin. Operates using the AVDD +5V supply (default). When inserted in Position A, sets the AVDD1 voltage to the +3.3V supply from the <a href="#">ADP150</a> (U6) regulator. Setting AVDD1 = +3.3V is not allowed when AVSS = -2.5V.
LK2	B	Selects the voltage applied to the AVDD2 pin. Operates using the AVDD +5V supply (default). When inserted in Position A, sets the AVDD2 voltage to the +3.3V supply from the ADP150 (U6) regulator. Setting AVDD2 = +3.3V is not allowed when AVSS = -2.5V.
LK3	B	Selects the external clock input or internal clock output (default). When inserted in Position A, selects the CRYSTAL OPTION (Y1).
LK4	Inserted	Insert to connect REF- to AVSS.
LK5	B	Connects REF+ to 5V external reference (default). When inserted in Position A, REF+ is connected to 2.5V internal reference.
LK6	A	Turns on the <a href="#">LTC3129</a> (U3) to supply 7V to the low-dropout (LDO) linear regulators (default). When inserted in Position B, turns off the LTC3129 (U3).
LK7	B	Shifts the voltage of AVDD 5.5V to 7V when inserted in Position A. When inserted in Position B, AVDD 5.5V is set to 5.5V (default).
LK8	A	Turns on the <a href="#">ADP7118</a> (U10) to supply for AVDD 5.5V. The AVDD 5.5V is supplied with 5.5V from ADP7118 regulator (default). When inserted in Position B, turns off the ADP7118 (U10).
LK9	A	Turns on the 5V LDO to supply for AVDD 5V. The AVDD 5V is supplied with 5V from ADP7118 (U11) regulator (default). When inserted in Position B, turns off the ADP7118 (U11).
LK10	A	Turns on the 2.5V LDO to supply for AVDD 2.5V. The AVDD 2.5V is supplied with 2.5V from <a href="#">LT1962</a> (U4) regulator (default). When inserted in Position B, turns off the LT1962 (U4).
LK11	A	Turns on the <a href="#">LTC1983</a> (U2) to supply for the <a href="#">ADP7182</a> (U5) 2.5V linear regulator (default). When inserted in Position B, turns off the LTC1983 (U2).
LK12	A	Turns on the ADP7182 (U5) to supply for -2.5V. The -2.5V is supplied with -2.5V from the ADP7182 regulator (default); AVSS can be connected to ground depending on S1. When inserted in Position B, turns off the ADP7182 (U5).
LK13	A	Turns on the 3.3V LDO to supply for IOVDD 3.3V. The IOVDD 3.3V is supplied with 3.3V from ADP150 (U6) regulator (default). When inserted in Position B, turns off the ADP150 (U6).
LK14	Removed	Insert LK14 when performing NOISE TEST.
LK15	A	Set to A, connects REFOUT to VCM (default). Set to B, connects REFOUT to A0. Remove LK15 when using an external VCM from J15.
LK16	B	Set to A, connects AIN0 to ADC Driver. Set to B, connects/directs AIN0 to ADC (default). Remove LK16 when connecting AIN0 to surfboard.
LK17	B	Set to A, connects AIN1 to ADC Driver. Set to B, connects/directs AIN1 to ADC (default). Remove LK17 when connecting AIN0 to surfboard.
LK18	A	Set to A, connects -VS to GND (default). Set to B, connects -VS to -2.5 V. Remove LK18 when using external supply.
LK19	B	Set to A, connects +VS to AVDD 5 V. Set to B, connects +VS to AVDD 5.5 V (default). Remove LK19 when using external supply.

## HARDWARE GUIDE

Table 1. Hardware Link Options (Continued)

Link Number	Default Position	Description
LK20	Inserted	When inserted, initiates power down for the <a href="#">ADA4945-1/ADA4940-1</a> . Remove when using the ADC DRIVER. Insert LK20 when performing NOISE TEST or when Surfboard is connected.
LK21	A	Set to A, connects SCLK to standard Arduino connection (default). Set to B when using multiple boards; connects SCLK to alternative Arduino connection.
LK22	A	Set to A, connects DOUT to standard Arduino connection (default). Set to B when using multiple boards; connects DOUT to alternative Arduino connection.
LK23	A	Set to A, connects DIN to standard Arduino connection (default). Set to B when using multiple boards; connects DIN to alternative Arduino connection.
LK24	A	Set to A, connects CS to standard Arduino connection (default). Otherwise, select different CS for stacking multiple boards.

## ON-BOARD CONNECTIONS

Table 2. On-Board Connections

Connector	Function	Connector Type
J1	External clock input or ADC internal clock output	SubMiniature version B (SMB) connector jack, male Pin 50Ω through hole solder
J2	External bench top voltage supply option for AVDD +5V, AVDD +2.5V, AVSS -2.5V, and IOVDD inputs on the <a href="#">AD7175-8</a>	Screw terminal block, 2.54mm pitch
J4	Arduino headers (power)	8 position receptacle connector, 2.54mm pitch
J5	Arduino header (Digital 1)	10 position receptacle connector, 2.54mm pitch
J6	Arduino header (analog)	6 position receptacle connector, 2.54mm pitch
J7	Arduino header (Digital 0)	8 position receptacle connector, 2.54mm pitch
J8	Peripheral module (PMOD) form factor	12-pin header, 2.54mm pitch
J9	Arduino header lead frame chip scale package (LFCSP)	6 position, 2 row, receptacle connector, 2.54mm pitch
J15 and J17	Analog input terminal block; wired connection to external source or sensor	Power socket block, 8-pin, 2.54mm pitch, 3.5mm solder tail
J16	Analog input terminal block; wired connection to external source or sensor	Power socket block, 6-pin, 2.54mm pitch, 3.5mm solder tail
J18	General-purpose input/output (GPIO) terminal	4 position, 1 row vertical printed circuit board (PCB) header, 2.54mm pitch
J19	Surfboard header (optional)	7-way, 2.54 mm pin socket
J20	Surfboard header (optional)	7-way, 2.54 mm pin header

## HARDWARE GUIDE

### POWER SUPPLIES

The evaluation board receives power through the controller board when connected to the PC via 5V USB. Linear regulators generate the required power supply levels from the applied USB voltage.

Each regulator can be shut down using their shut down links (see [Table 3](#)).

To configure the on-board power supplies, refer to the following descriptions:

- ▶ AVDD1 and AVSS selection (S1)
  - ▶ 5V supply (default)
    - ▶ Position switch (S1) to SINGLE on the board
    - ▶ 5V regulator supplies AVDD1
    - ▶ AVSS tied to AGND
  - ▶ 2.5V split supply
    - ▶ Position switch (S1) to SPLIT on the board
    - ▶ 2.5V regulator supplies AVDD1
- ▶ -3V regulator and -2.5V regulator supplies AVSS
- ▶ AVDD1 and AVDD2 selection (LK1 and LK2)
  - ▶ 5V supply (default)
    - ▶ Set LK1 and/or LK2 to Position B
    - ▶ 5V regulator supplies AVDD1
  - ▶ 3.3V supply
    - ▶ Set LK1 and/or LK2 to Position A
    - ▶ 3.3V regulator supplies IOVDD
  - ▶ External AVDD/AVSS
    - ▶ Set LK1, LK2, LK9, LK10, LK11, LK12, and LK13 to Position B
    - ▶ When using external AVDD only, set S1 to SINGLE, and connect external AVDD Pin 1 of J2.
    - ▶ When using external AVDD and AVSS, set S1 to SPLIT, and connect external AVDD and AVSS to Pin 2 and Pin 3 of J2, respectively.

**Table 3. Power Supplies Link Options**

Supply	Regulator	Shut Down Link
+5V Regulator	<a href="#">ADP7118ACPZN5.0-R7</a>	LK9
+2.5V Regulator	<a href="#">LT1962EMS8-2.5#PBF</a>	LK10
-2.5V Regulator	<a href="#">ADP7182AUJZ-2.5-R7</a>	LK12
+3.3V Regulator	<a href="#">ADP150ACBZ-3.3-R7</a>	LK13

**HARDWARE GUIDE**

**SERIAL INTERFACE**

There are four primary signals: CS, SCLK, MOSI/DIN, and MISO/DOUT (all are inputs, except for MISO/DOUT, which is an output). The EVAL-AD7175-8ARDZ evaluation board connects to any microcontroller board that uses the Arduino standard headers. This can be developed in user code for a variety of platforms.

Serial communication options:

- ▶ Arduino connection using the [SDP-K1](#)
- ▶ PMOD connector
- ▶ Standalone mode

Note: the links LK21, LK22, LK23, and LK24 through J5 provide access to all serial peripheral interface (SPI) signals and set the input/output voltage levels.

For an introduction to the SPI, see [Introduction to SPI Interface](#).

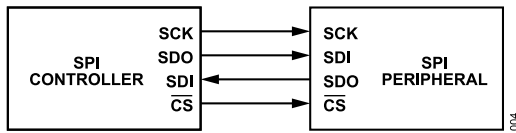


Figure 4. SPI Configuration

**ANALOG INPUTS**

The EVAL-AD7175-8ARDZ primary analog inputs can be applied on J15, J16, and J17 which are at the left side of the board (see [Figure 1](#)). Differential analog inputs are applied on AIN0 and AIN1 when using the ADC driver (when using ADC driver, enable AIN+/AIN- buffers). The [AD7175-8](#) evaluation software is set up to analyze DC inputs to the ADC. The AD7175-8 input buffers work for DC input signals.

**REFERENCE OPTIONS**

The on-board EVAL-AD7175-8ARDZ link configuration offers the following reference options:

- ▶ The AD7175-8 internal 2.5V reference
- ▶ The default [ADR4550](#) on-board external reference
- ▶ External reference connector J17 through the AIN1/REF2+ and AIN0/REF2- pins

**SELECTING THE REFERENCE SOURCE**

**Software**

The following steps show the setting reference for Channel 0. For channel n, go to register SETUPCON[n].

1. Board must be connected to ACE.
2. Open the AD7175-8 memory map (**Memory Map Side-By-Side**).
3. Search for the SETUPCON[0] register.
4. Set REF\_SEL\_N[0] to the desired reference source or the **Data (Hex)** to the relevant bits.
  - a. **External Reference 1 – REF+/-** (Hex Value 00, Binary Value 00).
  - b. **External Reference 2 – REF2+/-** (Hex Value 01, Binary Value 01).
  - c. **Internal 2.5V Reference** REFOUT, AVSS (Hex Value 02, Binary Value 10).
  - d. **AVDD1 – AVSS** (Hex Value 03, Binary Value 11).

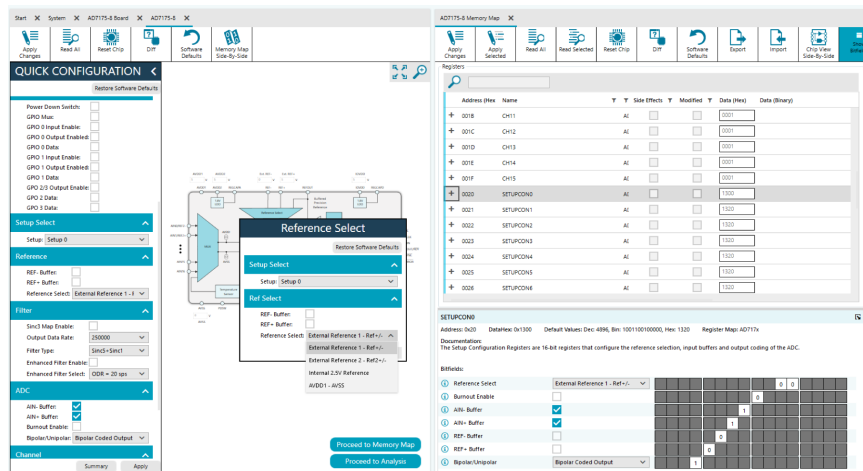


Figure 5. AD7175-8 Reference Select

**HARDWARE GUIDE****Hardware****Table 4. Reference Link Options**

Link Numbers	Type	Default Position	Description
LK4	Link	Inserted	Inserted: connects REF- to AVSS. Removed: disconnects REF- to AVSS.
LK5	Link	B	REF+/- connections. Set to A: connects REF+ to REFOUT. Set to B: connects REF+ to on board the <a href="#">ADR4550</a> external reference.

**SOFTWARE GUIDE**

**ACE SOFTWARE**

The ACE software is available at the [Analog Devices website](#).

See the [Quick Start Guide](#) section or for the step by step installation, see the [Installation Guide](#) section.

**INSTALLATION GUIDE**

The EVAL-AD7175-8ARDZ evaluation kit includes a link to the software that needs to be installed before using the EVAL-AD7175-8ARDZ evaluation board.

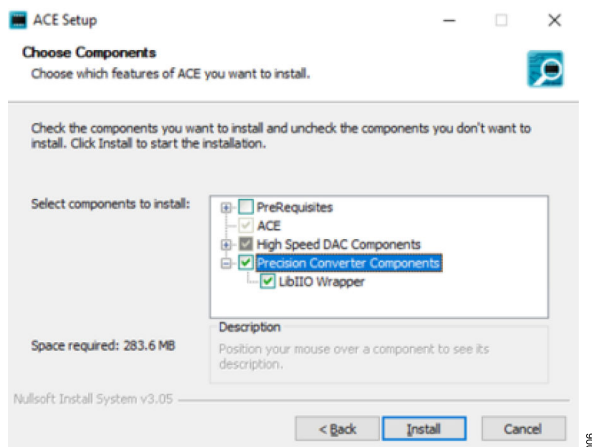
Warning: the ACE software and board plug-in must be installed before connecting both the evaluation board and the SDP-K1 board to the PC. This ensures that the evaluations system is recognized when it is connected to the PC.

**Installing the ACE Software**

To install the ACE software, follow these steps:

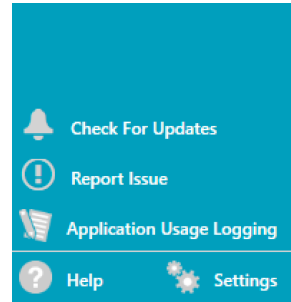
1. With the SDP board disconnected from the USB port of the PC, download the ACE software package to start the ACE software installation.
2. Click **Download ACE Installer**.
3. Run the installer and follow the instructions to complete the software installation process.

During the installation process, ensure to select **Precision Converter Components** ( ) when prompted and enable the **LibIIO Wrapper** ( ) to ensure that all necessary software components are installed (see [Figure 6](#)).

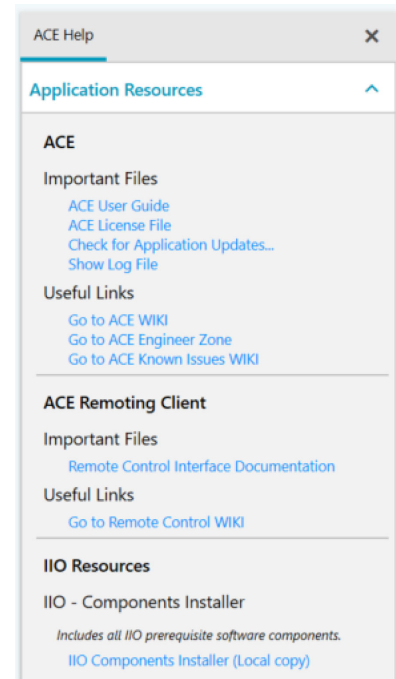


*Figure 6. Precision Converter Components*

The **LibIIO Wrapper** must be installed for ACE to detect the connected hardware. If you need to install the **LibIIO Wrapper** after ACE has been installed, click the **Help** button in the main ACE window. In the **ACE Help** panel that appears, expand the **Application Resources** section, and there is a link to run a local copy of the IIO prerequisite software components (**IIO Components Installer (Local copy)**). See [Figure 7](#) and [Figure 8](#).

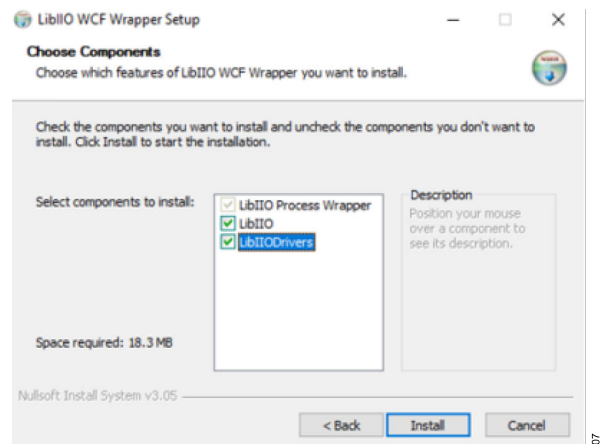


*Figure 7. ACE Help Button*



*Figure 8. ACE Application Sources*

When prompted to select LibIIO components, ensure to select **LibIIO** and **LibIIODrivers** options, then click **Install** (see [Figure 9](#)).



*Figure 9. LibIIO Components*



SOFTWARE GUIDE

Quick Configuration Tab

The **QUICK CONFIGURATION** tab shows a block diagram of the AD7175-8. This tab allows the user to select inputs, set up the ADC, reset the ADC, and view errors present, as well as configure the device.

The ACE software features a quick configuration tab to configure the AD7175-8 through the following:

- ▶ Functional block diagram: the functional block diagram of the AD7175-8 (Label 1 in Figure 12) shows each of the functional blocks within the AD7175-8. Click a functional block on this diagram to open the configuration pop-up window for that block.
- ▶ Configuration pop-up button: each block has a pop-up window (Label 2 in Figure 12) which opens a different window to configure the relevant block.
- ▶ External parameters: the following are the four external parameters that are set by the EVAL-AD7175-8ARDZ but must be entered into the software:

- ▶ AVDD1 and AVDD2 (Label 3 in Figure 12)
- ▶ Ext. REF- and Ext. REF+ (Label 4 in Figure 12)
- ▶ IOVDD (Label 5 in Figure 12)
- ▶ AVSS (Label 6 in Figure 12)

The external reference on the EVAL-AD7175-8ARDZ is set to 2.5V by using the ADR4525. If bypassing the ADR4525 on the board, change the external reference voltage value in the software to ensure correct calculation of results in the **Waveform** and **Histogram** tabs in the waveform analysis window.

- ▶ Status bar: the status bar (Label 7 in Figure 12) displays status updates.
- ▶ Memory map button: opens the **Memory Map** tab.
- ▶ Waveform analysis button: opens the **Waveform** tab.

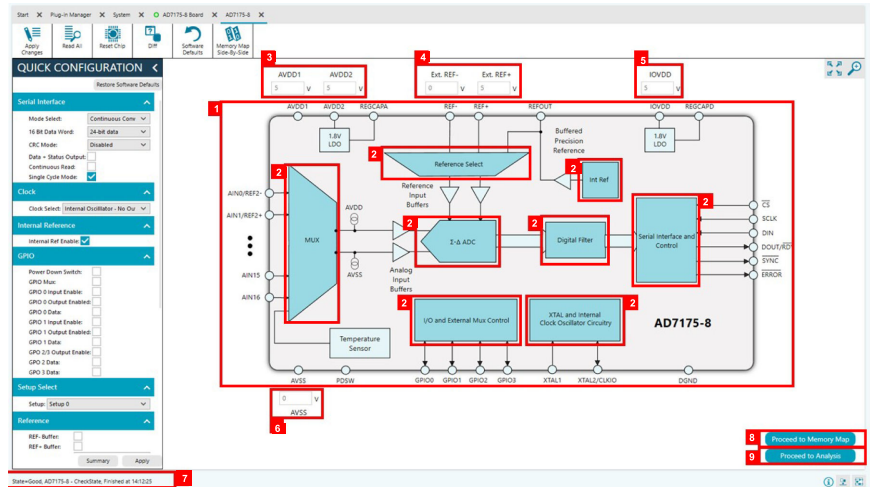


Figure 12. AD7175-8 Functional Block Diagram

## SOFTWARE GUIDE

## Waveform Tab

The **Waveform** tab can display the different waveforms for voltage input, current input and select the channel. The waveform tab graphs the conversions gathered and processes the data, calculating the peak-to-peak noise, RMS noise, and resolution.

The ACE software features different configuration settings to display results through the following:

- ▶ **Waveform graph and controls:** the data waveform graph (Label 10 in Figure 13) shows each successive sample of the ADC output. Zoom in on the data in the graph using the control toolbar (Label 11 in Figure 13). Change the scales on the graph by typing values into the x-axis and y-axis fields.
- ▶ **Samples:** the samples numeric control (Label 12 in Figure 13) sets the number of samples gathered per batch.
- ▶ **Serial interface and internal reference:** sets the ADC mode, enables DATA\_STAT and internal reference (Label 13 in Figure 13).
- ▶ **Run:** click **Run Once** or **Run Continuously** (Label 14 in Figure 13) to start gathering ADC results. If **Run Once** is clicked, the ADC returns the number of samples specified by the samples control. If **Run Continuously**, the ADC continuously returns samples until stopped by the user. Samples specify the amounts of samples to be shown on the data graph. This control is unrelated to the ADC mode. Results appear in the waveform graph (Label 10 in Figure 13).
- ▶ **Channel selection:** the channel selection control (Label 15 in Figure 13) selects which channel is displayed on the data waveform. These controls only affect the waveform graphs and have no effect on the channel settings in the ADC register map.
- ▶ **Display units and axis controls:** click the units dropdown box (Label 16 in Figure 13) to select whether the data graph displays in units of voltages/amps or codes. This control is independent for each graph.
- ▶ **Results pane:** the **RESULTS** pane (Label 17 in Figure 13) displays parametric values for the selected display format. The bottom of the **RESULTS** pane also has buttons that allow the user to import or export sample data.



Figure 13. AD7175-8 Waveform Tab

## SOFTWARE GUIDE

## Histogram Tab

The **Histogram** tab generates a histogram using the gathered samples and processes the data, calculating the peak-to-peak noise, RMS noise, and resolution.

The ACE software features a histogram tab that can be configured through the following:

- ▶ Histogram graph and controls: the data histogram graph (Label 18 in Figure 14) shows the number of times each sample of the ADC output occurs. Zoom in on the data using the control toolbar (Label 19 in Figure 14) in the graph.

- ▶ Channel selection: the channel selection control (Label 20 in Figure 14) selects which channel is displayed on the data waveform. These controls only affect the waveform graphs and have no effect on the channel settings in the ADC register map.
- ▶ Display units and axis controls: click the units dropdown box (Label 21 in Figure 14) to select whether the data graph displays in units of voltages/amps or codes. This control is independent for each graph.



Figure 14. Histogram Tab

SOFTWARE GUIDE

Memory Map

The ACE software features a memory map as an additional method to configure the AD7175-8 through the following:

- ▶ Register tree: the register maps nested list (Label 22 in Figure 15) shows the full register map in a tree control. Each register is shown. Click the expand button next to each register to show all the bit fields contained within that register.
- ▶ Register tree search: the register tree search box (Label 23 in Figure 15) allows the user to search the tree for any register or bit field. Enter a value into this field to filter the register tree.
- ▶ Register and bit field control: the register and bit field control section (Label 24 in Figure 15) allows the user to change the individual bit of the register selected in the register tree by

- clicking the bits or by programming the register value directly into the number control field (Label 25 in Figure 15). This control also shows all bit fields for the selected register. Change the values by using a dropdown box (Label 26 in Figure 15) or by selecting or clearing a checkbox (Label 27 in Figure 15).
- ▶ Documentation: the bit field documentation (Label 28 in Figure 15) contains the documentation for the register or the bit field selected. This field can be updated by selecting a register or bit field in the register tree or hovering over the register or bit field in the register tree or register control. This documentation is displayed by clicking the button labeled 28 in Figure 15.
- ▶ Import and export: save and load (Label 29 in Figure 15) allow the user to save the current register map setting to a file and to load the setting from the same file, respectively.

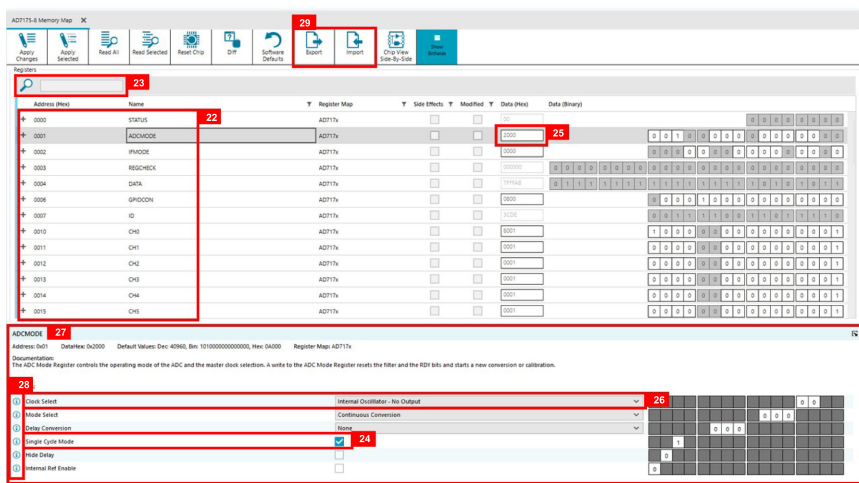


Figure 15. Memory Map

## NOTES

**ESD Caution**

**ESD (electrostatic discharge) sensitive device.** Charged devices and circuit boards can discharge without detection. Although this product features patented or proprietary protection circuitry, damage may occur on devices subjected to high energy ESD. Therefore, proper ESD precautions should be taken to avoid performance degradation or loss of functionality.

**Legal Terms and Conditions**

By using the evaluation board discussed herein (together with any tools, components documentation or support materials, the "Evaluation Board"), you are agreeing to be bound by the terms and conditions set forth below ("Agreement") unless you have purchased the Evaluation Board, in which case the Analog Devices Standard Terms and Conditions of Sale shall govern. Do not use the Evaluation Board until you have read and agreed to the Agreement. Your use of the Evaluation Board shall signify your acceptance of the Agreement. This Agreement is made by and between you ("Customer") and Analog Devices, Inc. ("ADI"), with its principal place of business at Subject to the terms and conditions of the Agreement, ADI hereby grants to Customer a free, limited, personal, temporary, non-exclusive, non-sublicensable, non-transferable license to use the Evaluation Board FOR EVALUATION PURPOSES ONLY. Customer understands and agrees that the Evaluation Board is provided for the sole and exclusive purpose referenced above, and agrees not to use the Evaluation Board for any other purpose. Furthermore, the license granted is expressly made subject to the following additional limitations: Customer shall not (i) rent, lease, display, sell, transfer, assign, sublicense, or distribute the Evaluation Board; and (ii) permit any Third Party to access the Evaluation Board. As used herein, the term "Third Party" includes any entity other than ADI, Customer, their employees, affiliates and in-house consultants. The Evaluation Board is NOT sold to Customer; all rights not expressly granted herein, including ownership of the Evaluation Board, are reserved by ADI. CONFIDENTIALITY. This Agreement and the Evaluation Board shall all be considered the confidential and proprietary information of ADI. Customer may not disclose or transfer any portion of the Evaluation Board to any other party for any reason. Upon discontinuation of use of the Evaluation Board or termination of this Agreement, Customer agrees to promptly return the Evaluation Board to ADI. ADDITIONAL RESTRICTIONS. Customer may not disassemble, decompile or reverse engineer chips on the Evaluation Board. Customer shall inform ADI of any occurred damages or any modifications or alterations it makes to the Evaluation Board, including but not limited to soldering or any other activity that affects the material content of the Evaluation Board. Modifications to the Evaluation Board must comply with applicable law, including but not limited to the RoHS Directive. TERMINATION. ADI may terminate this Agreement at any time upon giving written notice to Customer. Customer agrees to return to ADI the Evaluation Board at that time. LIMITATION OF LIABILITY. THE EVALUATION BOARD PROVIDED HEREUNDER IS PROVIDED "AS IS" AND ADI MAKES NO WARRANTIES OR REPRESENTATIONS OF ANY KIND WITH RESPECT TO IT. ADI SPECIFICALLY DISCLAIMS ANY REPRESENTATIONS, ENDORSEMENTS, GUARANTEES, OR WARRANTIES, EXPRESS OR IMPLIED, RELATED TO THE EVALUATION BOARD INCLUDING, BUT NOT LIMITED TO, THE IMPLIED WARRANTY OF MERCHANTABILITY, TITLE, FITNESS FOR A PARTICULAR PURPOSE OR NON-INFRINGEMENT OF INTELLECTUAL PROPERTY RIGHTS. IN NO EVENT WILL ADI AND ITS LICENSORS BE LIABLE FOR ANY INCIDENTAL, SPECIAL, INDIRECT, OR CONSEQUENTIAL DAMAGES RESULTING FROM CUSTOMER'S POSSESSION OR USE OF THE EVALUATION BOARD, INCLUDING BUT NOT LIMITED TO LOST PROFITS, DELAY COSTS, LABOR COSTS OR LOSS OF GOODWILL. ADI'S TOTAL LIABILITY FROM ANY AND ALL CAUSES SHALL BE LIMITED TO THE AMOUNT OF ONE HUNDRED US DOLLARS (\$100.00). EXPORT. Customer agrees that it will not directly or indirectly export the Evaluation Board to another country, and that it will comply with all applicable United States federal laws and regulations relating to exports. GOVERNING LAW. This Agreement shall be governed by and construed in accordance with the substantive laws of the Commonwealth of Massachusetts (excluding conflict of law rules). Any legal action regarding this Agreement will be heard in the state or federal courts having jurisdiction in Suffolk County, Massachusetts, and Customer hereby submits to the personal jurisdiction and venue of such courts. The United Nations Convention on Contracts for the International Sale of Goods shall not apply to this Agreement and is expressly disclaimed. All Analog Devices products contained herein are subject to release and availability.