

# ADC Logic Probe Adapter Board

## DESCRIPTION

Demonstration circuit 1321 allows a logic analyzer to be directly connected to a DC890 compatible ADC demo circuit for capturing data. DC1321A-B has 100Ω termination resistors installed, for use with LVDS output ADCs and logic analyzer inputs that do not have termination. DC1321A-A has no termination resistors installed, for use with CMOS

output ADCs or with LVDS output ADCs, should the logic analyzer have built-in termination.

**Design files for this circuit board are available at <http://www.linear.com/demo/DC1321>**

LT, LT, LTC, LTM, Linear Technology and the Linear logo are registered trademarks of Linear Technology Corporation. All other trademarks are the property of their respective owners.

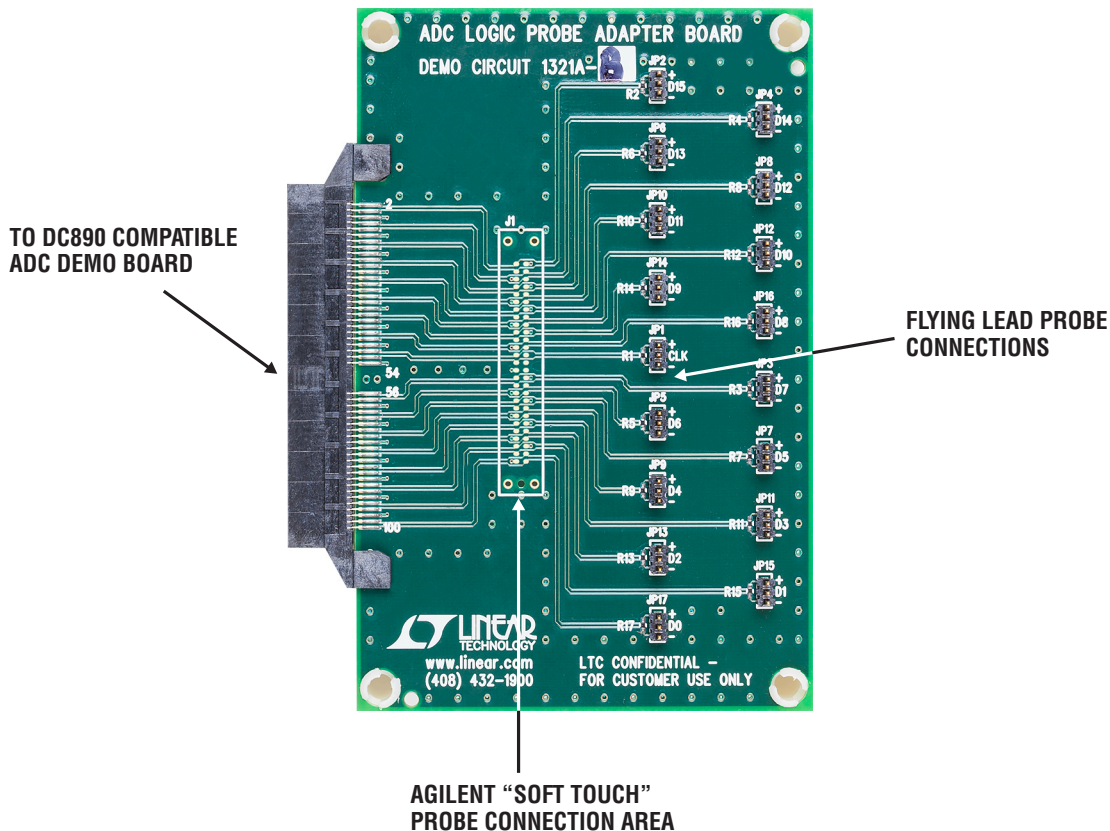


Figure 1. DC1321

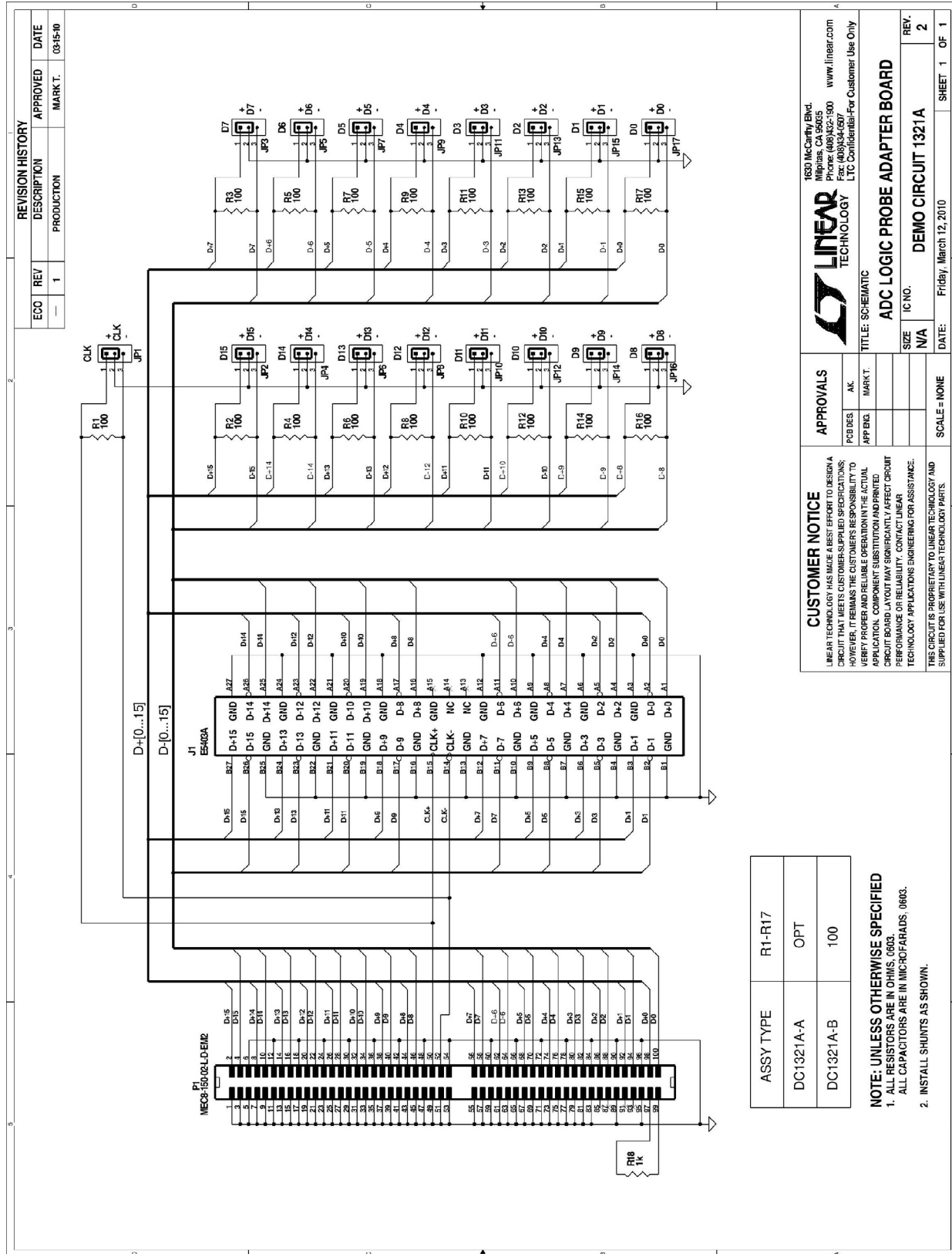
# DEMO MANUAL DC1321

---

## PARTS LIST

ITEM	QTY	REFERENCE	PART DESCRIPTION	MANUFACTURER/PART NUMBER
1	1	P1	SOCKET, 0.8MM DUAL EDGE MOUNT	SAMTEC, MEC8-150-02-L-D-EM2 (PbF)
2	17	JP1-JP17	HEADER, 3x1 .050" PIN SPACING	SAMTEC, HTMS-103-02-S-S (PbF)
3	1	R18	RES., CHIP 1k 5% 0402	VISHAY, CRCW04021K00JNED
4	4	FOR 4 CORNERS	STAND-OFF, NYLON (SNAP ON), 0.625" TALL	KEYSTONE, 8834 (PbF)
<b>DC1321A-A</b>				
5	0	R1-R17	OPT	
<b>DC1321A-B</b>				
5	17	R1-R17	RES., CHIP 100Ω 5% 0402	VISHAY, CRCW0402100RJNED

SCHEMATIC DIAGRAM



REVISION HISTORY		
ECO	REV	DESCRIPTION
—	1	PRODUCTION
		APPROVED
		DATE
		MARKT: 0315-00

1520 McCarty Blvd.  
Menlo Park, CA 94025  
Phone: (408)352-1500  
Fax: (408)354-0907  
www.linear.com  
LTC Confidential-For Customer Use Only

**LINEAR TECHNOLOGY**

TITLE: SCHEMATIC  
ADC LOGIC PROBE ADAPTER BOARD

IC NO. DEMO CIRCUIT 1321A  
SIZE N/A  
DATE: Friday, March 12, 2010

REVISION: 2  
SHEET 1 OF 1

SCALE = NONE

**CUSTOMER NOTICE**  
LINEAR TECHNOLOGY HAS MADE A BEST EFFORT TO DESIGN A CIRCUIT THAT MEETS CUSTOMER-SUPPLIED SPECIFICATIONS; HOWEVER, IT REMAINS THE CUSTOMER'S RESPONSIBILITY TO VERIFY PROPER AND RELIABLE OPERATION IN THE ACTUAL APPLICATION. COMPONENT SUBSTITUTION AND PRINTED CIRCUIT BOARD LAYOUT MAY SIGNIFICANTLY AFFECT CIRCUIT PERFORMANCE OR RELIABILITY. CONTACT LINEAR TECHNOLOGY APPLICATIONS ENGINEERING FOR ASSISTANCE. THIS CIRCUIT IS PROPRIETARY TO LINEAR TECHNOLOGY AND SUPPLIED FOR USE WITH LINEAR TECHNOLOGY PARTS.

**APPROVALS**

PCB DES	AK	MARKT

ASSY TYPE	R1-R17
DC1321A-A	OPT
DC1321A-B	100

**NOTE: UNLESS OTHERWISE SPECIFIED**

- ALL RESISTORS ARE IN OHMS, 0603.
- ALL CAPACITORS ARE IN MICROFARADS, 0603.
- INSTALL SHUNTS AS SHOWN.

# DEMO MANUAL DC1321

---

## DEMONSTRATION BOARD IMPORTANT NOTICE

Linear Technology Corporation (LTC) provides the enclosed product(s) under the following **AS IS** conditions:

This demonstration board (DEMO BOARD) kit being sold or provided by Linear Technology is intended for use for **ENGINEERING DEVELOPMENT OR EVALUATION PURPOSES ONLY** and is not provided by LTC for commercial use. As such, the DEMO BOARD herein may not be complete in terms of required design-, marketing-, and/or manufacturing-related protective considerations, including but not limited to product safety measures typically found in finished commercial goods. As a prototype, this product does not fall within the scope of the European Union directive on electromagnetic compatibility and therefore may or may not meet the technical requirements of the directive, or other regulations.

If this evaluation kit does not meet the specifications recited in the DEMO BOARD manual the kit may be returned within 30 days from the date of delivery for a full refund. **THE FOREGOING WARRANTY IS THE EXCLUSIVE WARRANTY MADE BY THE SELLER TO BUYER AND IS IN LIEU OF ALL OTHER WARRANTIES, EXPRESSED, IMPLIED, OR STATUTORY, INCLUDING ANY WARRANTY OF MERCHANTABILITY OR FITNESS FOR ANY PARTICULAR PURPOSE. EXCEPT TO THE EXTENT OF THIS INDEMNITY, NEITHER PARTY SHALL BE LIABLE TO THE OTHER FOR ANY INDIRECT, SPECIAL, INCIDENTAL, OR CONSEQUENTIAL DAMAGES.**

The user assumes all responsibility and liability for proper and safe handling of the goods. Further, the user releases LTC from all claims arising from the handling or use of the goods. Due to the open construction of the product, it is the user's responsibility to take any and all appropriate precautions with regard to electrostatic discharge. Also be aware that the products herein may not be regulatory compliant or agency certified (FCC, UL, CE, etc.).

No License is granted under any patent right or other intellectual property whatsoever. **LTC assumes no liability for applications assistance, customer product design, software performance, or infringement of patents or any other intellectual property rights of any kind.**

LTC currently services a variety of customers for products around the world, and therefore this transaction **is not exclusive**.

**Please read the DEMO BOARD manual prior to handling the product.** Persons handling this product must have electronics training and observe good laboratory practice standards. **Common sense is encouraged.**

This notice contains important safety information about temperatures and voltages. For further safety concerns, please contact a LTC application engineer.

Mailing Address:

Linear Technology  
1630 McCarthy Blvd.  
Milpitas, CA 95035

Copyright © 2004, Linear Technology Corporation