

# LTC3852EUDD

## Low $V_{IN}$ , High Efficiency Step-Down DC/DC Converter

### DESCRIPTION

Demonstration circuit 1270A is a low input voltage, high efficiency synchronous buck DC/DC converter with 2.7V to 5.5V input range. It can supply 15A maximum load current at 1.5V output. The demo board features the LTC<sup>®</sup>3852EUDD controller. The integrated charge pump provides 5V to the LTC3852's control logic and gate drives, supporting a wide selection of logic-level N-channel power MOSFETs with high efficiency. The constant frequency current mode architecture allows a phase-lockable frequency of up to 750kHz. The LTC3852 is ideal for general purpose 3.3V systems, lithium-ion powered devices and distributed DC power systems. The LTC3852EUDD is in a 3mm × 5mm 24-Lead QFN package.

The light load operation mode of the converter is determined with the FCB pin. Use JP2 jumper to select burst mode, discontinuous mode or forced continuous mode operation. Switching frequency is preset at about 400kHz. This frequency can be easily modified from 250kHz to 750kHz by changing the value of a resistor (R5). The converter can also be externally synchronized from 250kHz to 750kHz through MODE/PLLIN pin (PLLIN terminal on the board). To shut down the converter, one simple way is to force the RUN pin below 1.1V (JP1: OFF). The power good output (PGOOD terminal) is low when the output voltage exceeds the ±10% regulation window.

**Design files for this circuit board are available at <http://www.linear.com/demo>**

LT, LT, LTC, LTM, Linear Technology and the Linear logo are registered trademarks of Linear Technology Corporation. All other trademarks are the property of their respective owners.

### PERFORMANCE SUMMARY ( $T_A = 25^\circ\text{C}$ )

PARAMETER	CONDITION	VALUE
Input Voltage Range		2.7V to 5.5V
Output Voltage, $V_{OUT}$	$V_{IN} = 2.7\text{V to } 5.5\text{V}, I_{OUT} = 0\text{A to } 15\text{A}$	$1.5\text{V} \pm 2\%$
Maximum Output Current, $I_{OUT}$	$V_{IN} = 2.7\text{V to } 5.5\text{V}, V_{OUT} = 1.5\text{V}$	15A
Typical Output Ripple	$V_{IN} = 3.3\text{V}, I_{OUT} = 15\text{A}$ (20MHz BW)	11mV <sub>p-p</sub>
Typical Efficiency	$V_{IN} = 3.3\text{V}, V_{OUT} = 1.5\text{V}, I_{OUT} = 15\text{A}$	90.4%
Typical Switching Frequency		400kHz

## QUICK START PROCEDURE

Demonstration circuit 1270A is easy to set up to evaluate the performance of the LTC3852EUDD. Refer to Figure 1 for the proper measurement equipment setup and follow the procedure below:

1. With power off, connect the input power supply to  $V_{IN}$  (2.7V to 5.5V) and GND (input return).
2. Connect the 1.5V output load between  $V_{OUT}$  and GND (Initial load: no load).
3. Connect the DVMs to the input and outputs.
4. Turn on the input power supply and check for the proper output voltages.  $V_{OUT}$  should be  $1.5V \pm 2\%$ .
5. Once the proper output voltages are established, adjust the loads within the operating range and observe the output voltage regulation, ripple voltage and other parameters.

Note: When measuring the output or input voltage ripple, do not use the long ground lead on the oscilloscope probe.

See Figure 2 for the proper scope probe technique. Short, stiff leads need to be soldered to the (+) and (-) terminals of an output capacitor. The probe's ground ring needs to touch the (-) lead and the probe tip needs to touch the (+) lead.

## OPTIONAL HIGH INPUT VOLTAGE (4V to 38V) OPERATION

The LTC3852 can also be used for high input voltage applications (4V to 38V input), with the integrated charge pump bypassed:

1. Remove the  $0\Omega$  resistor from R3 and put the resistor at R26 position (disconnect  $V_{IN1}$  from  $V_{IN}$ , and connect  $V_{IN2}$  from  $V_{IN}$ ). Remove R22 and R23. The C1 flying cap can also be removed.
2. The related power components, such as input/output capacitors, MOSFETs, and inductor, need to be changed to fit the new application specification.

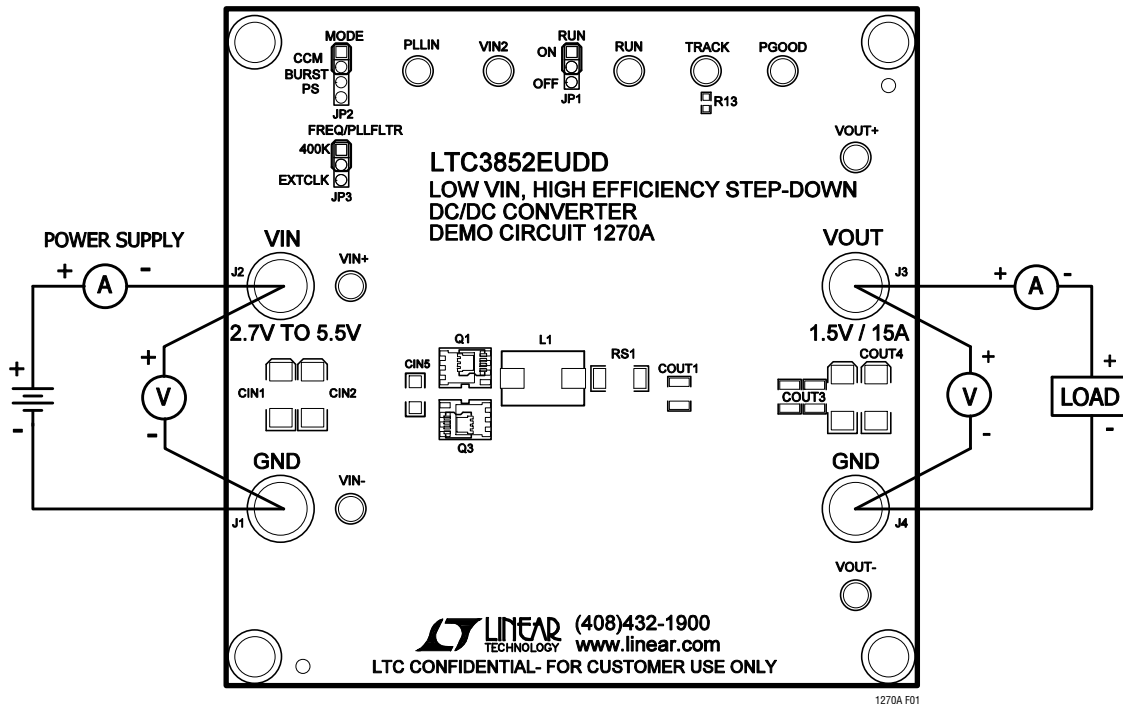
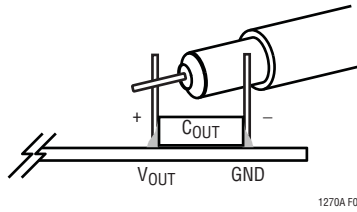
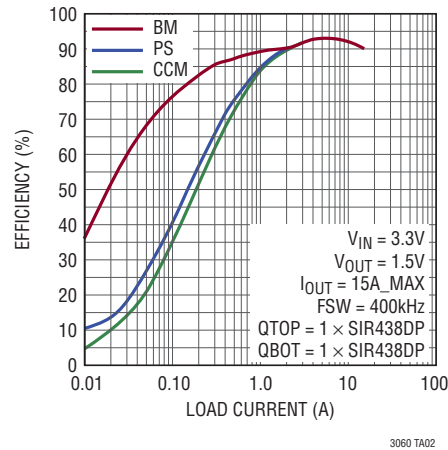


Figure 1. Proper Measurement Equipment Setup

## QUICK START PROCEDURE



**Figure 2. Measuring Output Voltage Ripple**



**Figure 3. Efficiency vs Load Current**

## PARTS LIST

ITEM	QUANTITY	REFERENCE-DESCRIPTION	DESCRIPTION	MANUFACTURERS PART NUMBER
<b>Required Circuit Components</b>				
1	2	C <sub>IN2</sub> , C <sub>IN1</sub>	Cap., POSCAP 220µF 6.3V 20% 7343	SANYO 6TPE220MI
2	2	C <sub>IN6</sub> , C <sub>IN5</sub>	Cap., X5R 10µF 16V 20% 1206	Taiyo Yuden EMK316BJ106ML
3	1	C <sub>OUT1</sub>	Cap., X5R 100µF 6.3V 20% 1210	AVX 12106D107MAT2A
4	2	C <sub>OUT3</sub> , C <sub>OUT4</sub>	Cap., POSCAP 330µF 4V 20%	SANYO 4TPE330MI
5	1	C1	Cap., X5R 2.2µF 10V 10% 0603	Taiyo Yuden LMK107BJ225MA
6	4	C2, C7, C14, C15	Cap., X5R 4.7µF 10V 10% 0603	Taiyo Yuden LMK107BJ475KA
7	1	C3	Cap., X7R 100pF 25V 10% 0603	AVX 06033C101KAT2A
8	1	C4	Cap., X7R 0.01µF 100V 10% 0603	AVX 06031C103KAT2A
9	3	C5, C6, C11	Cap., X7R 0.1µF 25V 10% 0603	AVX 06033C104KAT2A
10	1	C8	Cap., X7R 2200pF 25V 20% 0603	AVX 06033C222MAT2A
11	1	C9	Cap., X7R 150pF 25V 10% 0603	AVX 06033C151KAT1A
12	2	C12, C16	Cap., NPO 1000pF 25V 10% 0603	AVX 06033A102KAT1A
13	1	D1	Schottky Diode, 30V	Central Semi. CMDSH-3
14	1	L1	Inductor, 0.4uH	Vitec 59PR9875N

# DEMO MANUAL DC1270A

## PARTS LIST

ITEM	QUANTITY	REFERENCE-DESCRIPTION	DESCRIPTION	MANUFACTURERS PART NUMBER
15	2	Q1,mQ3	Mosfet-N Channel, 30V/45A LFPK	Renesas RJK0330DPB-00-J0
		Q1,mQ3 (Alternate)	Mosfet-N Channel, Reduced Qg, 25V SO-8	Vishay SiliconixSIR438DP
16	1	RS1	Res., 0.002 1/2W 1% 2010	Vishay WSL-2010-2L000-F-EA
17	3	R1, R16, R17	Res., Chip 100k 0.06W 5% 0603	Vishay CRCW0603104JNEA
18	1	R2	Res., Chip 10 0.06W 5% 0603	Vishay CRCW0603100JNEA
19	8	R3, R6, R10, R13, R22-R25	Res/Jumper, Chip 0Ω 1/16W 1 AMP 0603	Vishay CRCW0603000Z0EA
20	1	R5	Res., Chip 82.5k 0.06W 1% 0603	Vishay CRCW060382K5FKEA
21	1	R7	Res., Chip 1k 0.06W 5% 0603	Vishay CRCW06031K00JNEA
22	1	R9	Res., Chip 5.90k 0.06W 1% 0603	Vishay CRCW06035K90FKEA
23	2	R12, R11	Res., Chip 100 0.06W 5% 0603	Vishay CRCW0603100RJNEA
24	1	R19	Res., Chip 20k 0.06W 1% 0603	Vishay CRCW060320K2FKEA
25	1	R20	Res., Chip 17.4k 0.06W 1% 0603	Vishay CRCW060317K4FKEA
26	1	R21	Res/Jumper, Chip 0Ω 1/8W 1 AMP 0805	Vishay CRCW08050000Z0EA
27	1	U1	I.C., Volt. Reg. QFN(24)(UDD) 3mm × 5mm	Linear Tech. Corp. LTC3852EUDD

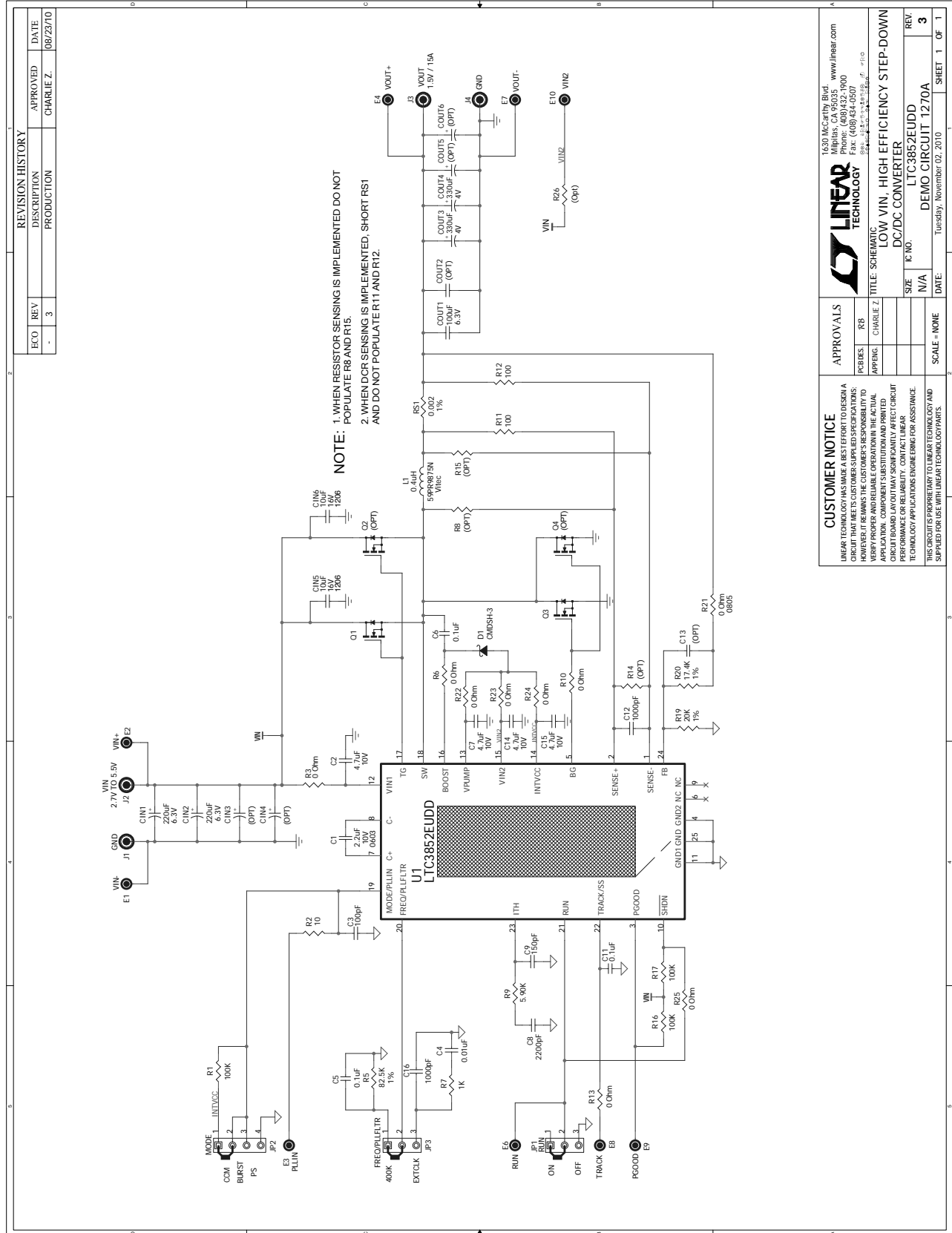
### Additional Circuit Components

1	0	C <sub>IN3</sub> , C <sub>IN4</sub>	Cap., POSCAP 220μF 6.3V 20% 7343	Sanyo 6TPE220MI
2	0	C <sub>OUT2</sub>	Cap., X5R 100μF 6.3V 20% 1210	AVX 12106D107MAT2A
3	0	C <sub>OUT5</sub> , C <sub>OUT6</sub>	Cap., POSCAP 330μF 4V 20%	Sanyo 4TPE330MI
4	0	C13	Cap., 0603	
5	0	Q4, Q2	N-Chan. Single, SO8-PWRPAK-SGL	
6	0	R8, R14, R15, R26	Res., 0603	

### Hardware For Demo Board Only

1	9	E1-E4, E6 to E10	Turret, Testpoint	Mill Max 2501-2-00-80-00-00-07-0
2	2	JP3, JP1	Headers, 3 Pins 2mm Ctrs.	Samtec TMM-103-02-L-S
3	1	JP2	Headers, 4 Pins 2mm Ctrs.	Samtec TMM-104-02-L-S
4	4	J1-J4	Connector, Banana Jack	Keystone 575-4
5	3	XJP1 to XJP3	Shunt, 2mm Ctrs.	Samtec 2SN-BK-G
6	4		Stand-Off, Nylon 0.5" Tall	Keystone, 8833(Snap On)
7	1		FAB, Rev3 Printed Circuit Board	Demo Circuit 1270A
8	2		Stencil	Stencil #1270A

**SCHEMATIC DIAGRAM**



REVISION HISTORY		
ECO	REV	DATE
-	3	08/23/10
DESCRIPTION		APPROVED
PRODUCTION		CHARLIE Z.

**CUSTOMER NOTICE**  
 LINEAR TECHNOLOGY HAS MADE A BEST EFFORT TO DESIGN A CIRCUIT THAT MEETS CUSTOMER-SUPPLIED SPECIFICATIONS. HOWEVER, IT REMAINS THE CUSTOMER'S RESPONSIBILITY TO VERIFY THAT THE CIRCUIT MEETS ALL SPECIFICATIONS FOR APPLICATION. COMPONENT SUBSTITUTION AND PARTS CIRCUIT BOARD LAYOUT MAY SIGNIFICANTLY AFFECT CIRCUIT PERFORMANCE OR RELIABILITY. CONTACT LINEAR TECHNOLOGY APPLICATIONS ENGINEERING FOR ASSISTANCE. THIS CIRCUIT IS PROPRIETARY TO LINEAR TECHNOLOGY AND SUPPLIED FOR USE WITH LINEAR TECHNOLOGY PARTS.

**APPROVALS**

DESIGNER	RB
APPROVER	CHARLIE Z.

**TITLE: SCHEMATIC**  
**LOW VIN - HIGH EFFICIENCY STEP-DOWN DC/DC CONVERTER**

IC NO. **LTC3852EUDD**  
 DEMO CIRCUIT 1270A

SCALE - NONE  
 DATE: Tuesday, November 02, 2010

1530 McCarty Blvd.  
 Milpitas, CA 95035 www.linear.com  
 Phone: (408)432-1900  
 Fax: (408)434-0507

REV: **3**  
 SHEET 1 OF 1



Information furnished by Linear Technology Corporation is believed to be accurate and reliable. However, no responsibility is assumed for its use. Linear Technology Corporation makes no representation that the interconnection of its circuits as described herein will not infringe on existing patent rights.

# DEMO MANUAL DC1270A

---

## DEMONSTRATION BOARD IMPORTANT NOTICE

Linear Technology Corporation (LTC) provides the enclosed product(s) under the following **AS IS** conditions:

This demonstration board (DEMO BOARD) kit being sold or provided by Linear Technology is intended for use for **ENGINEERING DEVELOPMENT OR EVALUATION PURPOSES ONLY** and is not provided by LTC for commercial use. As such, the DEMO BOARD herein may not be complete in terms of required design-, marketing-, and/or manufacturing-related protective considerations, including but not limited to product safety measures typically found in finished commercial goods. As a prototype, this product does not fall within the scope of the European Union directive on electromagnetic compatibility and therefore may or may not meet the technical requirements of the directive, or other regulations.

If this evaluation kit does not meet the specifications recited in the DEMO BOARD manual the kit may be returned within 30 days from the date of delivery for a full refund. **THE FOREGOING WARRANTY IS THE EXCLUSIVE WARRANTY MADE BY THE SELLER TO BUYER AND IS IN LIEU OF ALL OTHER WARRANTIES, EXPRESSED, IMPLIED, OR STATUTORY, INCLUDING ANY WARRANTY OF MERCHANTABILITY OR FITNESS FOR ANY PARTICULAR PURPOSE. EXCEPT TO THE EXTENT OF THIS INDEMNITY, NEITHER PARTY SHALL BE LIABLE TO THE OTHER FOR ANY INDIRECT, SPECIAL, INCIDENTAL, OR CONSEQUENTIAL DAMAGES.**

The user assumes all responsibility and liability for proper and safe handling of the goods. Further, the user releases LTC from all claims arising from the handling or use of the goods. Due to the open construction of the product, it is the user's responsibility to take any and all appropriate precautions with regard to electrostatic discharge. Also be aware that the products herein may not be regulatory compliant or agency certified (FCC, UL, CE, etc.).

No License is granted under any patent right or other intellectual property whatsoever. **LTC assumes no liability for applications assistance, customer product design, software performance, or infringement of patents or any other intellectual property rights of any kind.**

LTC currently services a variety of customers for products around the world, and therefore this transaction **is not exclusive**.

**Please read the DEMO BOARD manual prior to handling the product.** Persons handling this product must have electronics training and observe good laboratory practice standards. **Common sense is encouraged.**

This notice contains important safety information about temperatures and voltages. For further safety concerns, please contact a LTC application engineer.

Mailing Address:

Linear Technology  
1630 McCarthy Blvd.  
Milpitas, CA 95035

Copyright © 2004, Linear Technology Corporation