

Evaluates: ADPL12005/ADPL12006

General Description

The ADPL12006 evaluation kit (EV kit) provides a proven design to evaluate the ADPL12005/ADPL12006, synchronous buck converter with 20 μ A quiescent current. The standard EV kit Printed circuit board (PCB), comes with an ADPL12006AFOB+ (1.5MHz, adjustable output) installed, and various test points and jumpers for evaluation. The EV kit output voltage is fixed and easily configured with minimum component changes. The default EV kit is designed to deliver up to 6A with an input voltage of 3V to 20V. Output voltage quality can be monitored by observing the PGOOD signal. The ADPL12006 EV kit can also be used to evaluate all variants of the ADPL12005 and ADPL12006.

Features and Benefits

- Input Supply Range from 3V to 20V
- Adjustable Output Voltage Range between 0.8V and 10V
- Delivers up to 6A Output Current
- Frequency Synchronization Input
- Enable Input
- Voltage-Monitoring PGOOD Output Available
- Proven PCB Layout
- Fully Assembled and Tested

[Ordering Information](#) appears at end of data sheet.

Quick Start

Required Equipment

- ADPL12006 EV Kit
- 20V, 6A Power Supply (PS)
- Appropriate Resistive Load, or an Electronic Load that can Sink 6A
- Digital Multimeter (DMM)
- Oscilloscope

Procedure

The EV kit comes fully assembled and tested. Use the following steps to verify board operation:

1. While observing safe Electrostatic discharge (ESD) practices, carefully unbox the ADPL12006 EV kit board from its packaging. Inspect the board to ensure that no damage has occurred during the shipment. Jumpers/shunts are preinstalled before testing and packaging.
2. Verify that all jumpers are in their default positions, as shown in [Table 1](#).
3. Connect the positive and negative terminals of the power supply to the VSUP_FILTER and GND test pads, respectively.
4. Set the power supply voltage to 12V and the current limit to 6A.
5. Turn on the power supply.
6. Using the DMM, verify that the V_{OUT} is approximately 3.3V.
7. Verify that the switching frequency is 1.5MHz (approx.) by monitoring the inductor switching voltage with the oscilloscope.
8. Connect the positive and negative terminals of the electronic load to VOUT and GND3, respectively.
9. Set the electronic load to the desired current at or below 6A or use an equivalent resistive load with an appropriate power rating.
10. Adjust the current limit on the power supply as necessary.
11. Turn on the power supply and electronic load.
12. Verify that the voltage across the V_{OUT} and GND3 is 3.3V.

Detailed Description of Hardware

This ADPL12006 EV kit should be used with the following documents:

- ADPL12005/ADPL12006 data sheet
- ADPL12006 EV kit data sheet (this document)

The EV kit provides a proven layout for the ADPL12006 synchronous buck regulator IC. The device accepts input voltages as high as 20V and delivers up to 6A. Various test points are included for evaluation.

External Synchronization

The device can operate in two modes: Forced–Pulse-width modulation (PWM) or skip mode. Skip mode has better efficiency for light-load conditions. When SYNC is pulled low, the device operates in skip mode for light loads and PWM mode for larger loads. When SYNC is pulled high, the device is forced to operate in PWM mode across all load conditions. SYNC can be used to synchronize with other supplies if a clock source is present. The device is forced to operate in FPWM mode when SYNC is connected to a clock source.

Buck Output Monitoring (PGOOD)

The EV kit provides a power-good output test point (PGOOD) to monitor the status of the buck output (OUT). PGOOD is high impedance when the output is in regulation. PGOOD is low impedance when the output voltage drops below 7% (typ) of its nominal regulated voltage.

Programming Buck Output Voltage

The EV kit comes installed with ADPL12006AFOB+, providing an adjustable output voltage of 0.8V to 10V. To program the V_{OUT} voltage, place appropriate resistors in the positions R_7 and R_8 according to the following equation:

$$R_7 = R_8 \times \left[\left[\frac{V_{OUT}}{V_{FB}} \right] - 1 \right]$$

Where typically $V_{FB} = 0.8V$ and $R_8 = 10k\Omega \sim 100k\Omega$.

Evaluating Other Variants

The ADPL12006 EV kit comes installed with the 1.5MHz, 6A variant (ADPL12006AFOB+). Additionally, a 400kHz variant with an inductor for 3.3V output is also available. Other variants can be installed with minimal component changes.

Evaluation Data

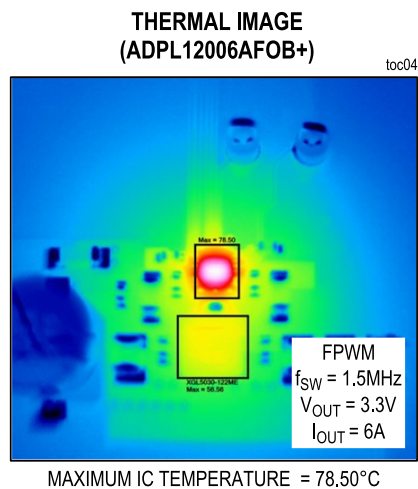
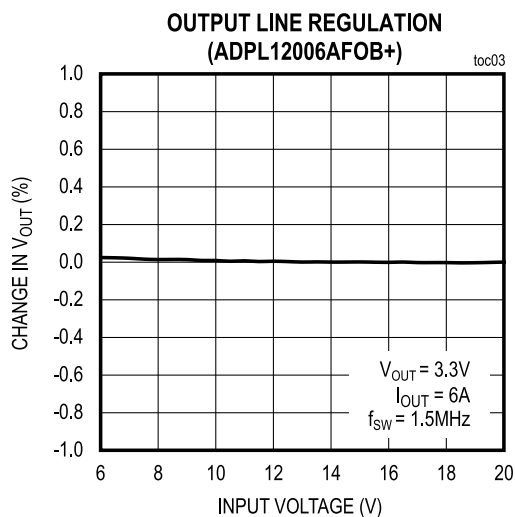
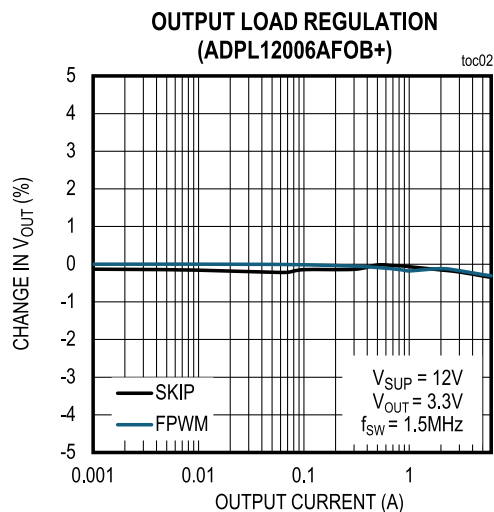
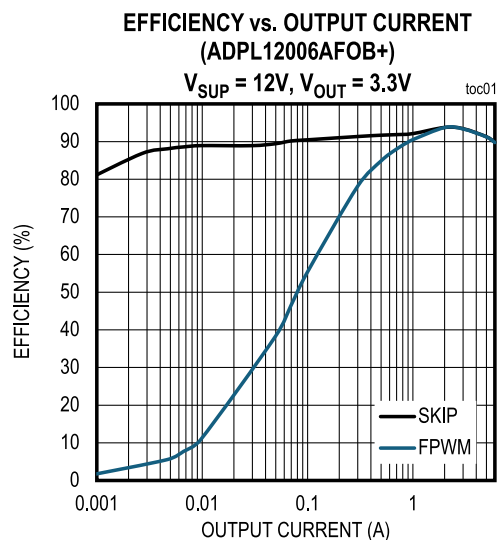


Table 1. Default Jumper Settings

JUMPER	SHUNT POSITION	FUNCTION
EN	Pins 1–2	Buck enabled
J1	Pins 1–2	FPWM mode
J2	Installed	PGOOD is pulled up to BIAS

Ordering Information

PART	TYPE
ADPL12006EVKIT#	EV Kit

#Denotes RoHS-compliant.

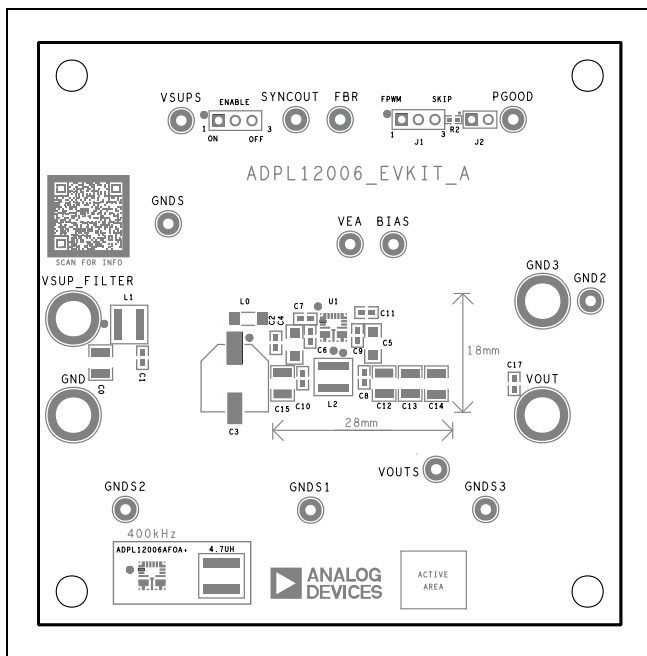
ADPL12006 EV Kit Bill of Materials

PART	MFG PART#	MANUFACTURER	VALUE	DESCRIPTION
4.7UH	XEL6060-472ME	COILCRAFT	4.7UH	INDUCTOR; SMT; COMPOSITE; 4.7UH; 20%; 12.1A
BIAS, FBR, GND2, GNDS, GNDS1–GNDS3, PGOOD, SYNCOUT, VEA, VSUPS	5012	KEYSTONE	N/A	TEST POINT; PIN DIA=0.125IN; TOTAL LENGTH=0.445IN; BOARD HOLE=0.063IN; WHITE; PHOSPHOR BRONZE WIRE SILVER PLATE FINISH
C0	C3225X7S1H106K250AB; CGA6P3X7S1H106K250AB; GCM32EC71H106K; CGA6P3X7S1H106K250AE	TDK; TDK; MURATA; TDK	10UF	CAP; SMT (1210); 10UF; 10%; 50V; X7S; CERAMIC
C1, C2	C0603C222K5RAC; GCM188R71H222K; CGA3E2X7R1H222K080AD; GRM39X7R222K50V; C1608X7R1H222K	KEMET;MURATA; TDK;MURATA;TDK	2200PF	CAP; SMT (0603); 2200PF; 10%; 50V; X7R; CERAMIC
C3	EEH-ZA1H101P	PANASONIC	100UF	CAP; SMT (CASE_G); 100UF; 20%; 50V; ALUMINUM- ELECTROLYTIC
C4, C5	CGA5L3X7R1H475K160AB; C1206C475K5RACAUTO	TDK;KEMET	4.7UF	CAP; SMT (1206); 4.7UF; 10%; 50V; X7R; CERAMIC
C6, C9	UMK107BJ105KA; C1608X5R1H105K080AB; CL10A105KB8NNN; GRM188R61H105KAAL; UMK107ABJ105KAH	TAIYO YUDEN; TDK; SAMSUNG; MURATA; TAIYO YUDEN	1UF	CAP; SMT (0603); 1UF; 10%; 50V; X5R; CERAMIC
C7, C8, C10, C17	CGA3E2X7R1H104K080AE; UMK107B7104KAH	TDK	0.1UF	CAP; SMT (0603); 0.1UF; 10%; 50V; X7R; CERAMIC
C11	GRM188Z71C225KE43; EMK107BB7225KA	MURATA; TAIYO YUDEN	2.2UF	CAP; SMT (0603); 2.2UF; 10%; 16V; X7R; CERAMIC
C12–C15	GCM32ER71C226ME15; CGA6P1X7R1C226M250AC; GCM32ER71C226ME19	MURATA; TDK; MURATA	22UF	CAP; SMT (1210); 22UF; 20%; 16V; X7R; CERAMIC
C16	C1005C0G1H330J050BA; GRM1555C1H330JA01	TDK;MURATA	33PF	CAP; SMT (0402); 33PF; 5%; 50V; C0G; CERAMIC

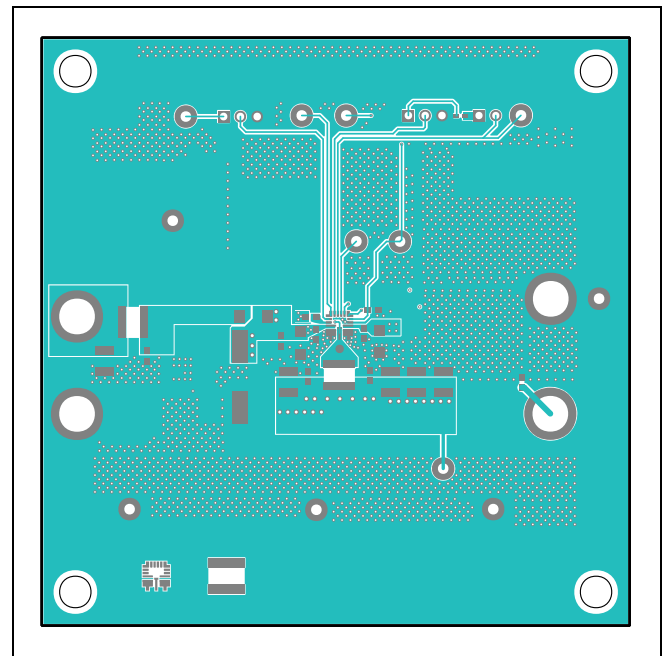
PART	MFG PART#	MANUFACTURER	VALUE	DESCRIPTION
ENABLE, J1	PEC03SAAN	SULLINS	PEC03SAAN	CONNECTOR; MALE; THROUGH HOLE; BREAKAWAY; STRAIGHT; 3PINS
GND, GND3, VOUT, VSUP_FILTER	575-4	KEYSTONE	575-4	RECEPTACLE; JACK; BANANA; 0.203IN [5.2MM] DIA X 0.218IN [5.5MM] L; 0.203D/0.218L; NICKEL PLATED BRASS
J2	PEC02SAAN	SULLINS	PEC02SAAN	CONNECTOR; MALE; THROUGH HOLE; BREAKAWAY; STRAIGHT; 2PINS
L0	BLM41PG600SH1	MURATA	60	INDUCTOR; SMT (1806); FERRITE-BEAD; 60 IMPEDANCE AT 100MHZ; 6A
L1	XEL5030-102ME	COILCRAFT	1UH	INDUCTOR; SMT; COMPOSITE; 1UH; 20%; 15.4A
L2	XEL5030-122ME	COILCRAFT	1.2UH	INDUCTOR; SMT; SHIELDED; 1.2UH; 20%; 14.4A
R2	ERA-2AEB103	PANASONIC	10K	RES; SMT (0402); 10K; 0.10%; +/-25PPM/DEGK; 0.0630W
R4, R6	RC0402JR-070RL; CR0402-16W-000RJT	YAGEO PHYCOMP; VENKEL LTD.	0	RES; SMT (0402); 0; 5%; JUMPER; 0.0630W
R7	CRCW060349K9FK; ERJ-3EKF4992	VISHAY DALE; PANASONIC	49.9K	RES; SMT (0603); 49.9K; 1%; +/-100PPM/DEGC; 0.1000W
R8	AC0603FR-0715K8L; CRCW060315K8FK; ERJ-3EKF1582	YAGEO;VISHAY; PANASONIC	15.8K	RES; SMT (0603); 15.8K; 1%; +/-100PPM/DEGC; 0.1000W
U1	ADPL12006AFOB+	ANALOG DEVICES	ADPL12006AFOB+	ADPL12006AFOB+; 1.5MHz
U2	ADPL12006AFOA+	ANALOG DEVICES	ADPL12006AFOA+	ADPL12006AFOA+; 400kHz

[illegible]

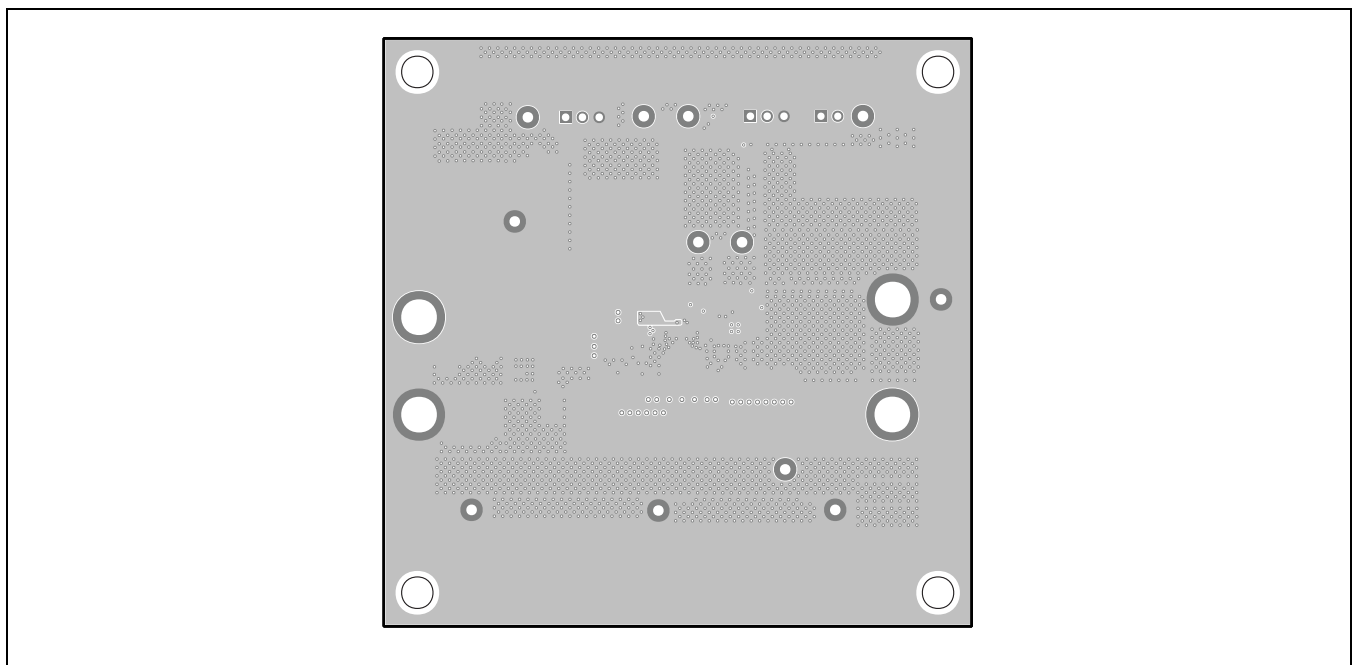
ADPL12010 EV Kit PCB Layout Diagrams



ADPL12010 EV kit Component Placement Guide—
Top Silkscreen

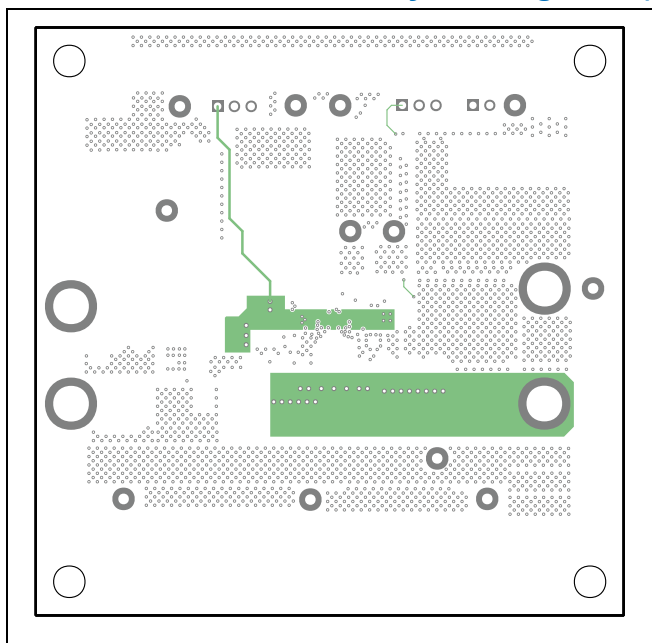


ADPL12010 EV kit PCB Layout—Top View

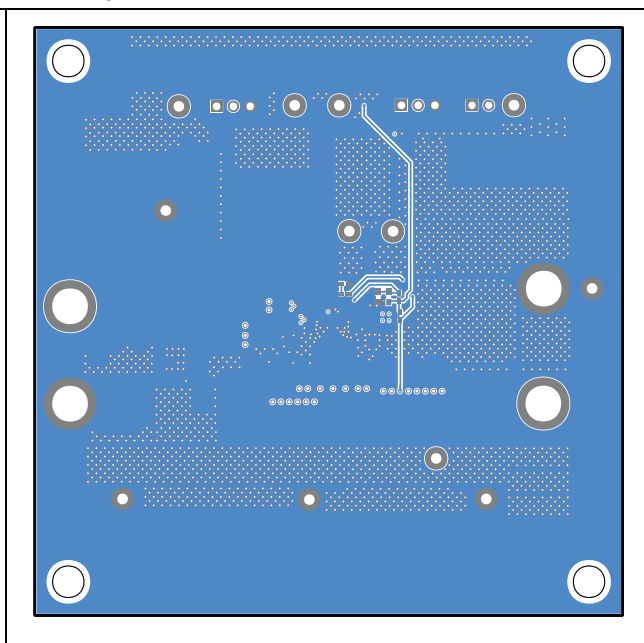


ADPL12010 EV kit PCB Layout—Layer 2

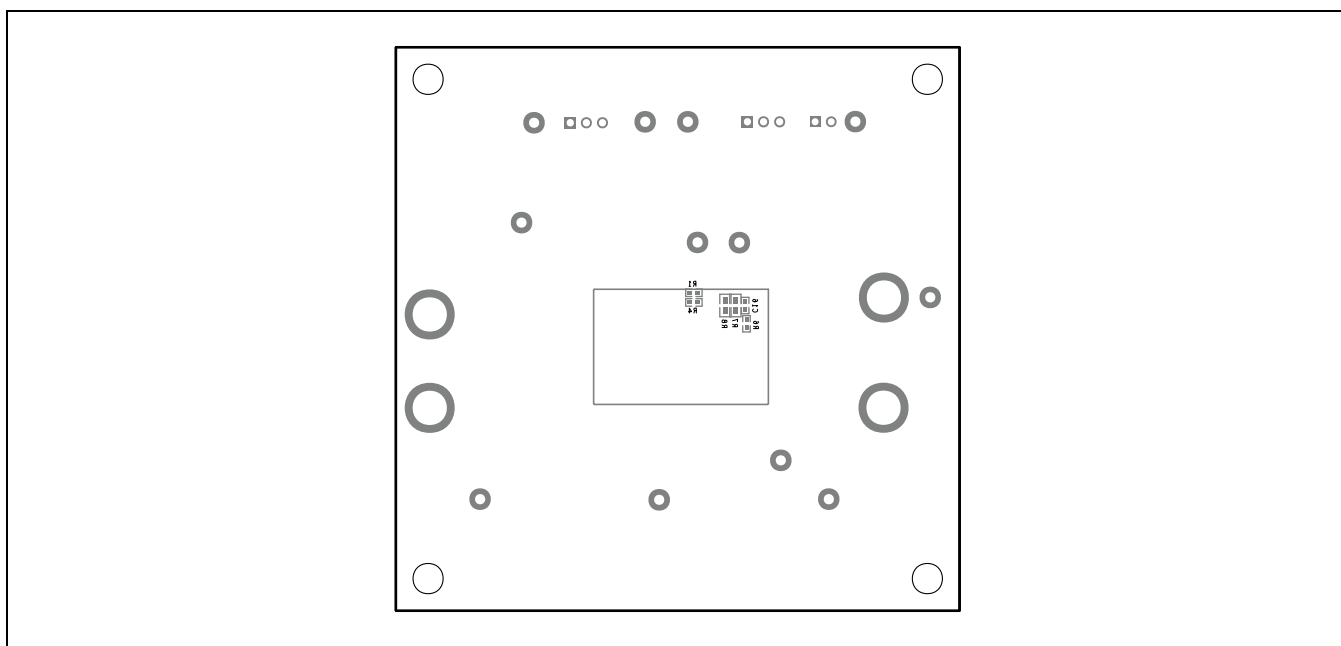
ADPL12006 EV Kit PCB Layout Diagrams (continued)



ADPL12010 EV kit PCB Layout—Layer 3



ADPL12010 EV kit PCB Layout—Bottom View



ADPL12010 EV kit Component Placement Guide —Bottom Silkscreen

Revision History

REVISION NUMBER	REVISION DATE	DESCRIPTION	PAGES CHANGED
0	6/25	Initial release	—

Notes

ALL INFORMATION CONTAINED HEREIN IS PROVIDED “AS IS” WITHOUT REPRESENTATION OR WARRANTY. NO RESPONSIBILITY IS ASSUMED BY ANALOG DEVICES FOR ITS USE, NOR FOR ANY INFRINGEMENTS OF PATENTS OR OTHER RIGHTS OF THIRD PARTIES THAT MAY RESULT FROM ITS USE. SPECIFICATIONS ARE SUBJECT TO CHANGE WITHOUT NOTICE. NO LICENSE, EITHER EXPRESSED OR IMPLIED, IS GRANTED UNDER ANY ADI PATENT RIGHT, COPYRIGHT, MASK WORK RIGHT, OR ANY OTHER ADI INTELLECTUAL PROPERTY RIGHT RELATING TO ANY COMBINATION, MACHINE, OR PROCESS, IN WHICH ADI PRODUCTS OR SERVICES ARE USED. TRADEMARKS AND REGISTERED TRADEMARKS ARE THE PROPERTY OF THEIR RESPECTIVE OWNERS. ALL ANALOG DEVICES PRODUCTS CONTAINED HEREIN ARE SUBJECT TO RELEASE AND AVAILABILITY.