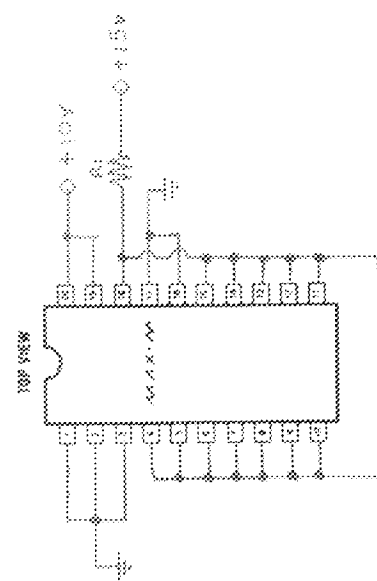


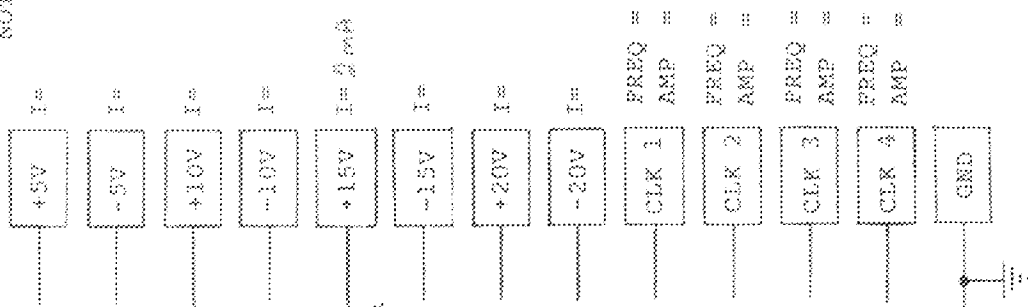
ONCE PER SOCKET

Top View



ONCE PER BOARD

NOTE 4



Steady state life test is per MIL-STD-883 Method 1005.

Burn-in is per MIL-STD-883 Method 1015, COND. 3

- NOTES:
- TEMPERATURE: ± 125 DEGREES C OR EQUIVALENT
 - TIME: 150 HOURS MIN. OR EQUIVALENT
 - PACPKAGE TYPE: 20 Pin DIP
 - MAX. SUPPLY CURRENT PER DEVICE:
 - $C_1 = C_2 = 0.1 \mu F \pm 20\%$
 - $R_1 = 100k \Omega \pm 10\%$
 - BURN-IN BOARD MATERIAL & ALL COMPONENTS MUST WITHSTAND $\pm 150^\circ C$ CONTINUOUS OPERATION.

SPEC. NO. 06-054 REV. A

DATE:

DRAWN BY: V. VACCARIELLA

APPROVED BY: DATE

MAXIM

BURN-IN SCHEMATIC

AD7545/003 & MAX7645/003

SCALE: NONE