

ETERNA EXT RANGE REFERENCE, GOBI

1. Notes:

2. Associated Documents



PCB FAB
600-0229-0001 REV1



BOM
700-0229-0001 REV2



ASY DWG
705-0229-0001 REV1

Revision History:

Rev	Description	ECO	Author
01	Initial release	1329	R. Peregrino
02	Ref des resequence	1379	R. Peregrino
03	Fix Castellated pinout	1581	R. Peregrino



LTC CONFIDENTIAL - FOR CUSTOMER USE ONLY

CUSTOMER NOTICE

LINEAR TECHNOLOGY HAS MADE A BEST EFFORT TO DESIGN A CIRCUIT THAT MEETS CUSTOMER-SUPPLIED SPECIFICATIONS; HOWEVER, IT REMAINS THE CUSTOMER'S RESPONSIBILITY TO VERIFY PROPER AND RELIABLE OPERATION IN THE ACTUAL APPLICATION. COMPONENT SUBSTITUTION AND PRINTED CIRUIT BOARD LAYOUT MAY SIGNIFICANTLY AFFECT CIRCUIT PERFORMANCE OR RELIABILITY. CONTACT LINEAR TECHNOLOGY APPLICATIONS ENGINEERING FOR ASSISTANCE.

THIS CIRCUIT IS PROPRIETARY TO LINEAR TECHNOLOGY AND IS SUPPLIED FOR USE WITH LINEAR TECHNOLOGY PARTS.

CONTRACT NO.

APPROVALS

DRAWN:

CHECKED:

APPROVED:

ENGINEER:

DESIGNER:



A Linear Technology Company

1630 McCarthy Blvd. Milpitas, CA 95035

Phone: (408)432-1900 Fax: (408)434-0507

TITLE:

PCA SCH, ETERNA EXT RANGE REFERENCE, GOBI

SIZE B

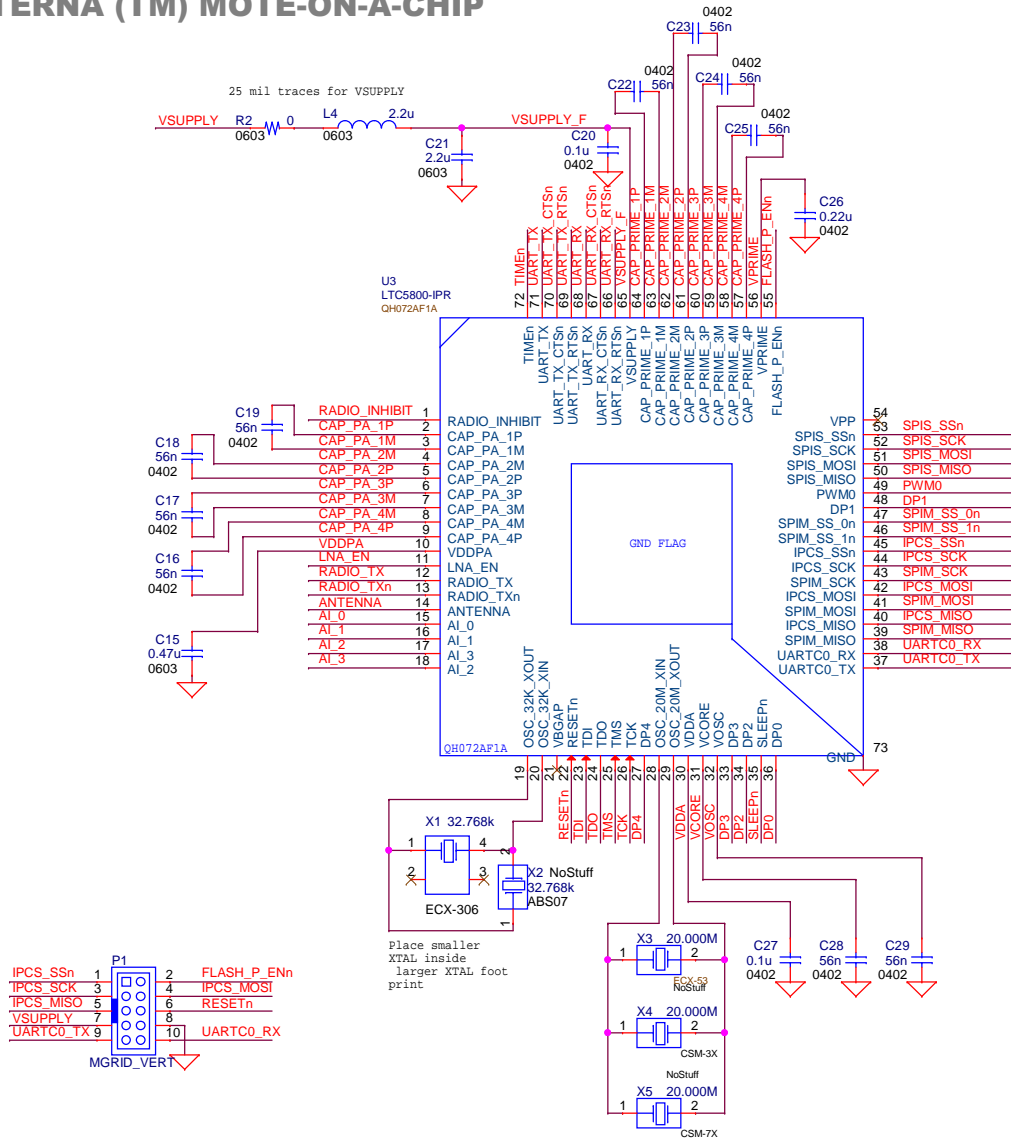
DWG NO. 710-0229-0001

REV 03

DATE: Wednesday, June 15, 2016

SHEET 1 OF 4

ETERNA (TM) MOTE-ON-A-CHIP



RADIO_INHIBIT	<< RADIO_INHIBIT
VDDPA	>> VDDPA
LNA_EN	>> LNA_EN
RADIO_TX	>> RADIO_TX
RADIO_TXn	>> RADIO_TXn
AI_0	<< AI_0
AI_1	<< AI_1
AI_2	<< AI_2
AI_3	<< AI_3
UARTC0_TX	>> UARTC0_TX
UARTC0_RX	>> UARTC0_RX
SPIM_MISO	<< SPIM_MISO
SPIM_MOSI	>> SPIM_MOSI
SPIM_SCK	>> SPIM_SCK
SPIM_SS_1n	>> SPIM_SS_1n
SPIM_SS_0n	>> SPIM_SS_0n
IPCS_MISO	>> IPCS_MISO
IPCS_MOSI	>> IPCS_MOSI
IPCS_SCK	<< IPCS_SCK
IPCS_SSn	<< IPCS_SSn
DP1	<< DP1
PWM0	<< PWM0
SPIS_MISO	>> SPIS_MISO
SPIS_MOSI	>> SPIS_MOSI
SPIS_SCK	<< SPIS_SCK
SPIS_SSn	<< SPIS_SSn

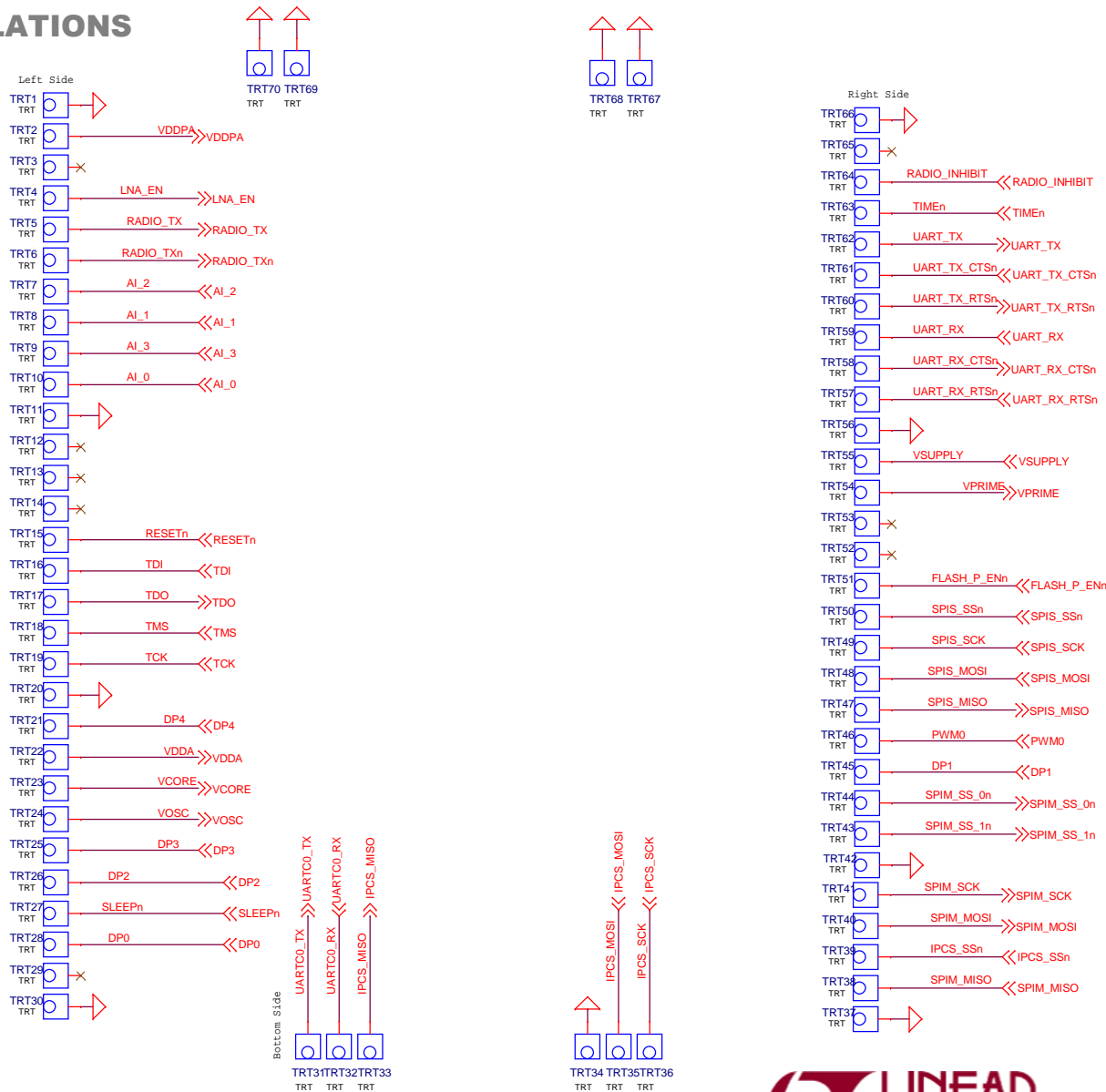
RESETn	<< RESETn
TDI	<< TDI
TDO	<< TDO
TMS	<< TMS
TCK	<< TCK
DP4	<< DP4
VDDA	>> VDDA
VCORE	>> VCORE
VOSC	>> VOSC
DP3	<< DP3
DP2	<< DP2
SLEEPn	<< SLEEPn
DP0	<< DP0
FLASH_P_ENn	<< FLASH_P_ENn
VPRIME	>> VPRIME
VSUPPLY	<< VSUPPLY
UART_RX_RTSn	>> UART_RX_RTSn
UART_RX_CTSn	>> UART_RX_CTSn
UART_RX	<< UART_RX
UART_TX_RTSn	>> UART_TX_RTSn
UART_TX_CTSn	>> UART_TX_CTSn
UART_TX	>> UART_TX
TIMEEn	<< TIMEEn
ANTENNA	>> ANTENNA




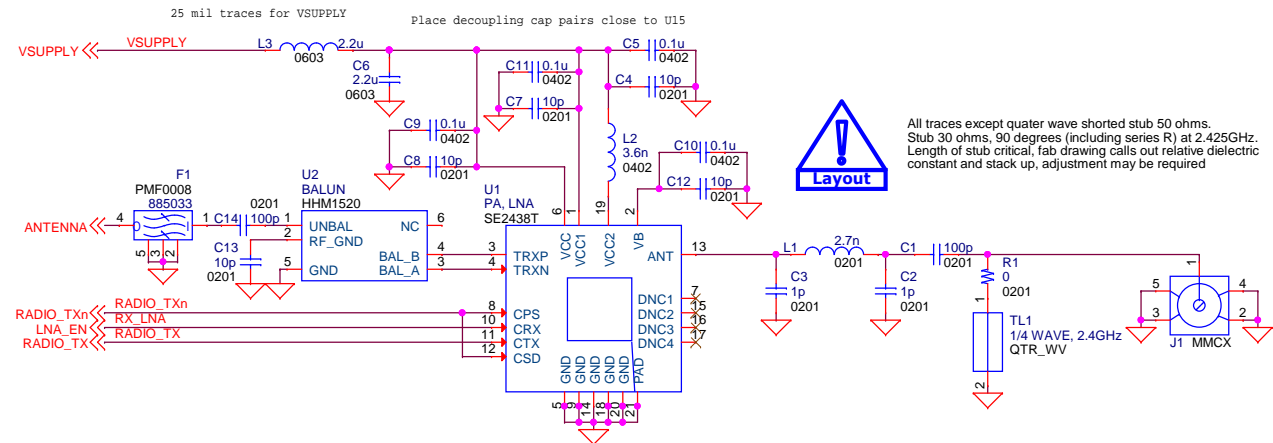
LTC CONFIDENTIAL - FOR CUSTOMER USE ONLY	
CUSTOMER NOTICE	
LINEAR TECHNOLOGY HAS MADE A BEST EFFORT TO DESIGN A CIRCUIT THAT MEETS CUSTOMER-SUPPLIED SPECIFICATIONS; HOWEVER, IT REMAINS THE CUSTOMER'S RESPONSIBILITY TO VERIFY PROPER AND RELIABLE OPERATION IN THE ACTUAL APPLICATION. COMPONENT SUBSTITUTION AND PRINTED CIRCUIT BOARD LAYOUT MAY SIGNIFICANTLY AFFECT CIRCUIT PERFORMANCE OR RELIABILITY. CONTACT LINEAR TECHNOLOGY APPLICATIONS ENGINEERING FOR ASSISTANCE.	
THIS CIRCUIT IS PROPRIETARY TO LINEAR TECHNOLOGY AND IS SUPPLIED FOR USE WITH LINEAR TECHNOLOGY PARTS.	

CONTRACT NO.	A Linear Technology Company	
APPROVALS		
DRAWN:	1630 McCarthy Blvd. Milpitas, CA 95035	
CHECKED:	Phone: (408)432-1900	
APPROVED:	Fax: (408)434-0507	
ENGINEER:	TITLE:	
DESIGNER:	PCA SCH, ETERNA EXT RANGE REFERENCE, GOBI	
DATE:	SIZE B	REV 03
	DWG NO. 710-0229-0001	
Wednesday, June 15, 2016		SHEET 2 OF 4

CASTELLATIONS



LTC CONFIDENTIAL - FOR CUSTOMER USE ONLY		CONTRACT NO.		 A Linear Technology Company		
CUSTOMER NOTICE LINEAR TECHNOLOGY HAS MADE A BEST EFFORT TO DESIGN A CIRCUIT THAT MEETS CUSTOMER-SUPPLIED SPECIFICATIONS; HOWEVER, IT REMAINS THE CUSTOMER'S RESPONSIBILITY TO VERIFY PROPER AND RELIABLE OPERATION IN THE ACTUAL APPLICATION. COMPONENT SUBSTITUTION AND PRINTED CIRCUIT BOARD LAYOUT MAY SIGNIFICANTLY AFFECT CIRCUIT PERFORMANCE OR RELIABILITY. CONTACT LINEAR TECHNOLOGY APPLICATIONS ENGINEERING FOR ASSISTANCE.		APPROVALS				
		DRAWN:		1630 McCarthy Blvd. Phone: (408)432-1900 Milpitas, CA 95035 Fax: (408)434-0507		
		CHECKED:		TITLE: PCA SCH, ETERNA EXT RANGE REFERENCE, GOBI		
		APPROVED:				
		ENGINEER:				
		THIS CIRCUIT IS PROPRIETARY TO LINEAR TECHNOLOGY AND IS SUPPLIED FOR USE WITH LINEAR TECHNOLOGY PARTS.		DESIGNER:		SIZE A
				DATE: Wednesday, June 15, 2016	SHEET 3 OF 4	



LTC CONFIDENTIAL - FOR CUSTOMER USE ONLY

CUSTOMER NOTICE

LINEAR TECHNOLOGY HAS MADE A BEST EFFORT TO DESIGN A CIRCUIT THAT MEETS CUSTOMER-SUPPLIED SPECIFICATIONS; HOWEVER, IT REMAINS THE CUSTOMER'S RESPONSIBILITY TO VERIFY PROPER AND RELIABLE OPERATION IN THE ACTUAL APPLICATION. COMPONENT SUBSTITUTION AND PRINTED CIRCUIT BOARD LAYOUT MAY SIGNIFICANTLY AFFECT CIRCUIT PERFORMANCE OR RELIABILITY. CONTACT LINEAR TECHNOLOGY APPLICATIONS ENGINEERING FOR ASSISTANCE.

THIS CIRCUIT IS PROPRIETARY TO LINEAR TECHNOLOGY AND IS SUPPLIED FOR USE WITH LINEAR TECHNOLOGY PARTS.

CONTRACT NO.

APPROVALS

DRAWN:

CHECKED:

APPROVED:

ENGINEER:

DESIGNER:



A Linear Technology Company

1630 McCarthy Blvd.
Milpitas, CA 95035

Phone: (408)432-1900
Fax: (408)434-0507

TITLE:

PCA SCH, ETERNA EXT RANGE REFERENCE, GOBI

SIZE
B

DWG NO.
710-0229-0001

REV
03

DATE: Wednesday, June 15, 2016

SHEET 4 OF 4