

# Analog Devices Welcomes Hittite Microwave Corporation

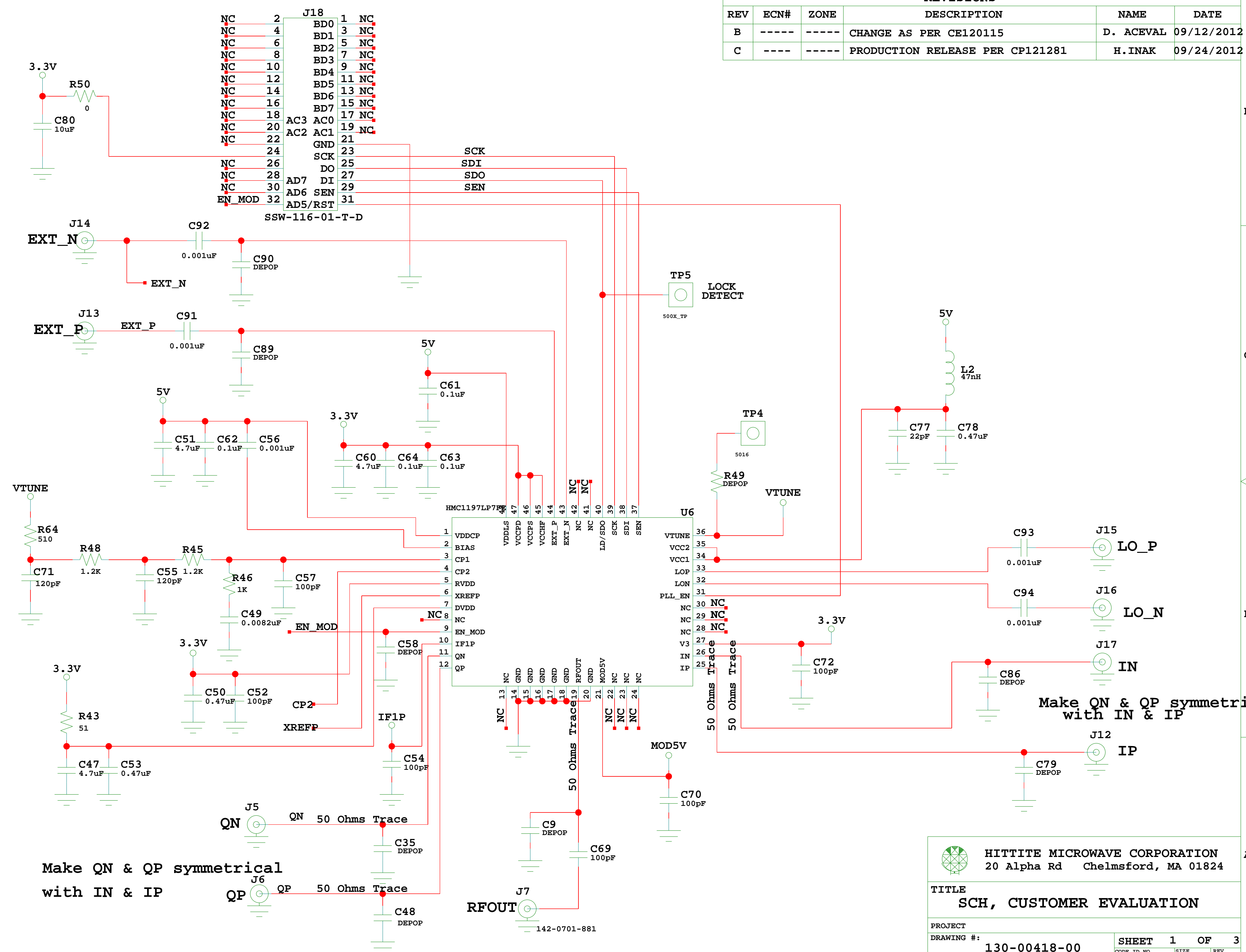
NO CONTENT ON THE ATTACHED DOCUMENT HAS CHANGED




**THIS PAGE INTENTIONALLY LEFT BLANK**

NOTICE OF PROPRIETARY PROPERTY: THIS DOCUMENT AND THE INFORMATION CONTAINED IN IT ARE THE PROPRIETARY PROPERTY OF HITTITE MICROWAVE CORPORATION. IT MAY NOT BE COPIED OR USED IN ANY MANNER NOR MAY ANY OF THE INFORMATION IN OR UPON IT BE USED FOR ANY PURPOSE WITHOUT THE EXPRESSED WRITTEN CONSENT OF AN AUTHORIZED AGENT OF HITTITE MICROWAVE CORPORATION.

REVISIONS					
REV	ECN#	ZONE	DESCRIPTION	NAME	DATE
B	----	----	CHANGE AS PER CE120115	D. ACEVAL	09/12/2012
C	----	----	PRODUCTION RELEASE PER CP121281	H. INAK	09/24/2012




**HITTITE MICROWAVE CORPORATION**  
 20 Alpha Rd Chelmsford, MA 01824

**TITLE**  
 SCH, CUSTOMER EVALUATION

<b>PROJECT</b>		<b>SHEET 1 OF 3</b>	
<b>DRAWING #:</b> 130-00418-00		<b>CODE ID NO.</b> 1CN88	<b>REV</b> C
<b>DRAWN BY</b> IMER SERBEST	<b>DATE</b> 01/01/2010	<b>SIZE</b> C	<b>REV</b> C

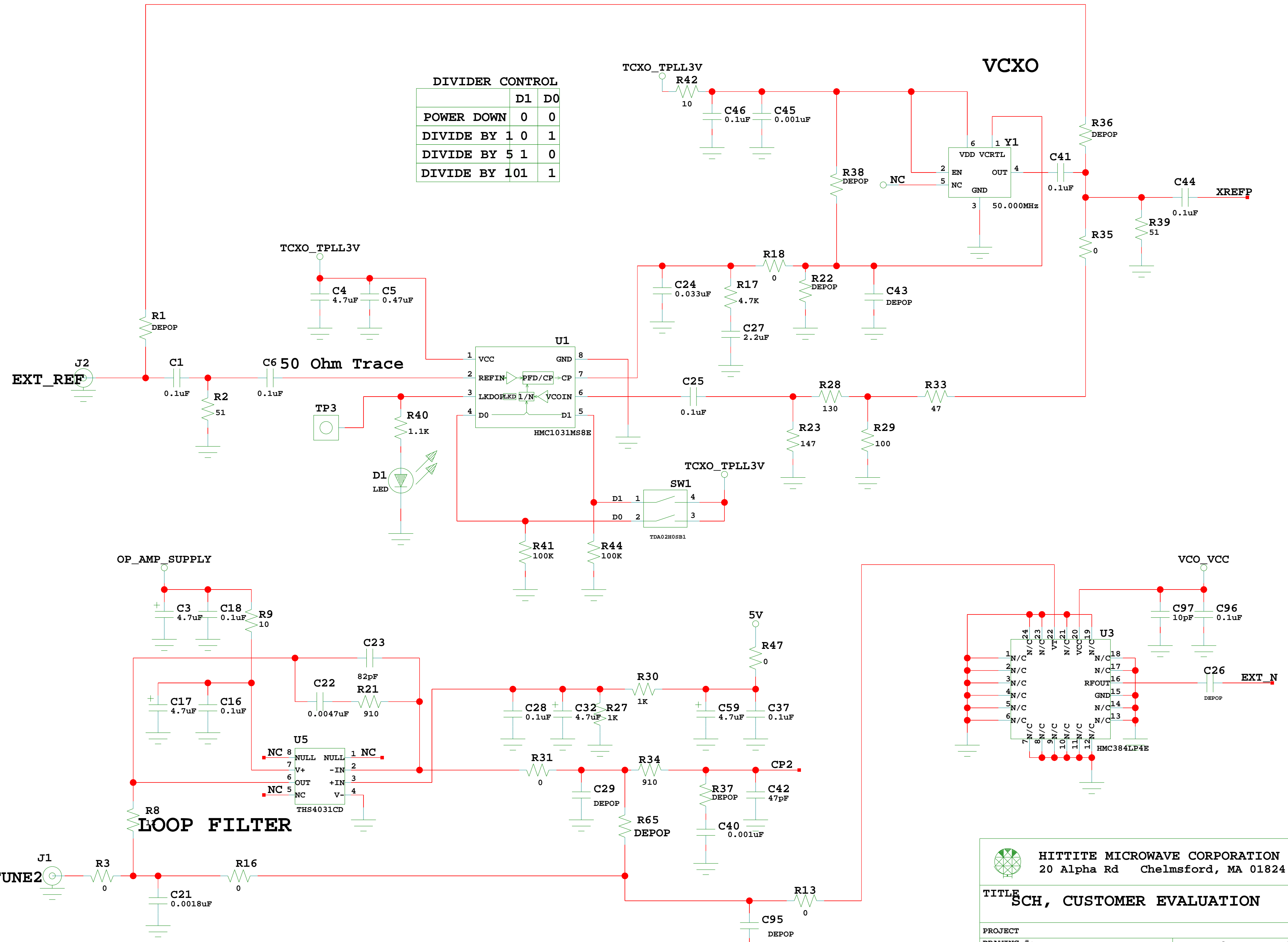
Make QN & QP symmetrical  
with IN & IP

Make QN & QP symmetrical  
with IN & IP

RFOUT  
142-0701-881

DIVIDER CONTROL

	D1	D0
POWER DOWN	0	0
DIVIDE BY 1	0	1
DIVIDE BY 5	1	0
DIVIDE BY 10	1	1



**HITTITE MICROWAVE CORPORATION**  
 20 Alpha Rd Chelmsford, MA 01824

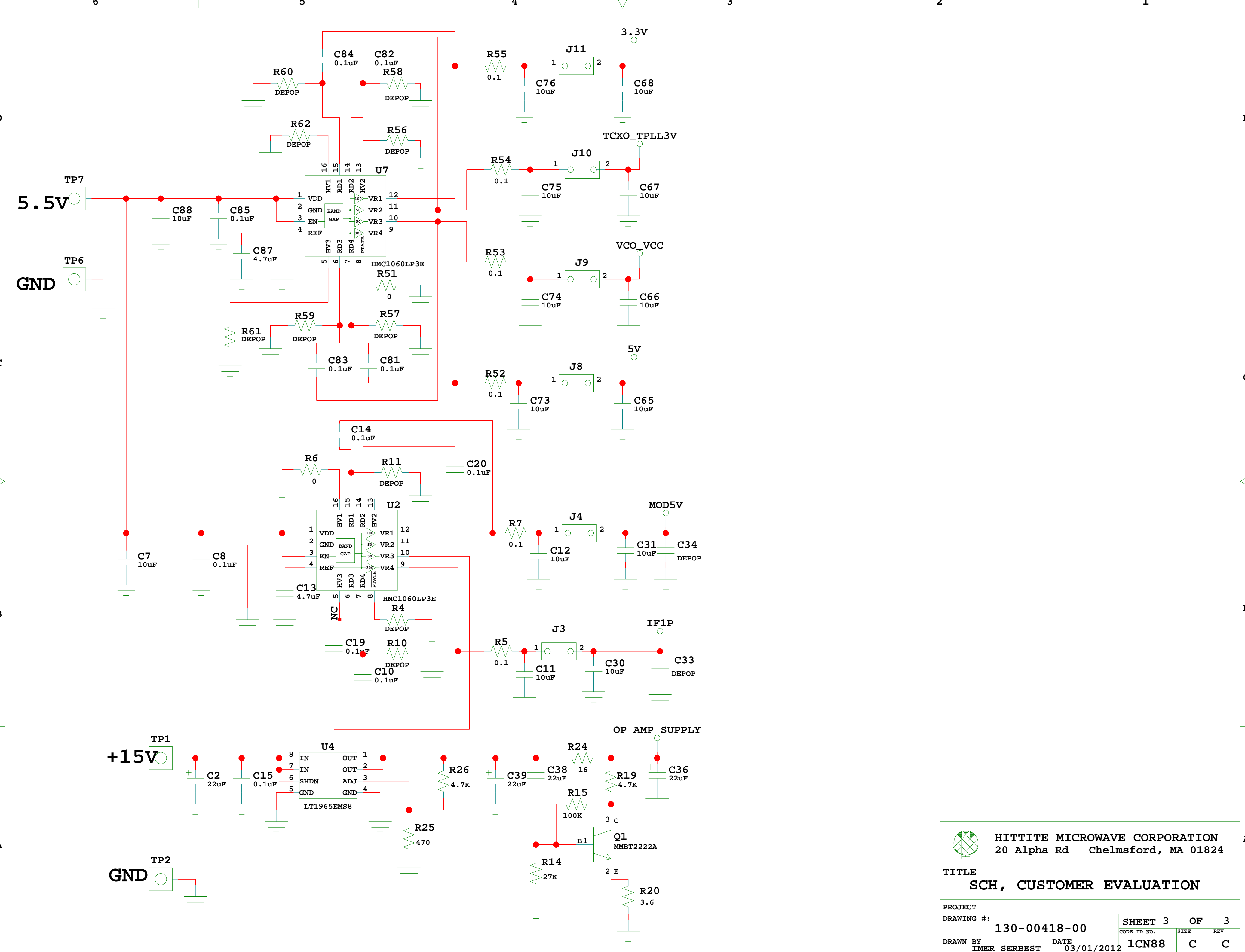
**TITLE**  
 SCH, CUSTOMER EVALUATION


**PROJECT**  
 DRAWING #: 130-00418-00

**SHEET 2 OF 3**

**DRAWN BY** IMER SERBEST **DATE** 03/01/2012 **CODE ID NO.** 1CN88 **SIZE** C **REV** C

24-09-2012\_12:20



 <b>HITTITE MICROWAVE CORPORATION</b> 20 Alpha Rd Chelmsford, MA 01824			
<b>TITLE</b> <b>SCH, CUSTOMER EVALUATION</b>			
PROJECT			
DRAWING #:		SHEET 3 OF 3	
130-00418-00		CODE ID NO.	SIZE
DRAWN BY		DATE	REV
IMER SERBEST		03/01/2012	1CN88 C C