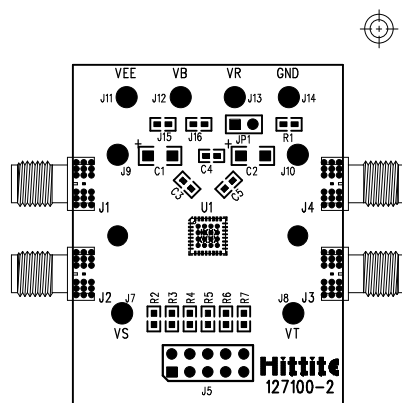


DO NOT SCALE PRINT

REVISION		DATE	APPROVED
ZONE	LTR	DESCRIPTION	
1		INITIAL RELEASE	09/03/09 MH
2		FIXED VEE/GND SHORT AT EDGE PLATING	05/12/10 MH




HITTITE MICROWAVE
PCB #127100-3
SILKSCREEN
ASSEMBLY

NOTES:

1. MANUALLY DISPENSE SOLDER FOR ALL SOLDERED COMPONENTS.
2. TRIM EDGE PLATING WITH TOOL 106356
3. SOLDER QUALITY TO IPC-610, CLASS 2.

CAUTION!: THIS ASSEMBLY CONTAINS DEVICES THAT ARE CLASS 1A SENSITIVE TO ELECTROSTATIC DISCHARGE AND EXTREME CARE MUST BE EXERCISED. HANDLING SHALL BE PER ANSI/ESD S20.20

PROPRIETARY TO HITTITE MICROWAVE CORPORATION

UNLESS OTHERWISE SPECIFIED:		DWN BY:		 <div>HITTITE MICROWAVE CORPORATION 20 Alpha Road Chelmsford, MA 01824</div>	
DIMENSIONS ARE IN INCHES (MM)		J. Norvell 05/12/10			
DRAWING PRACTICES PER MIL-STD-100		ENGINEER:		TITLE AD, EVAL VARIOUS, LC5	
TOLERANCES:		M. Harrell			
.XX	+/- 0.010			SIZECODE ID NO.DRAWING NO.REV A1CN881271012	
.XXX	+/- 0.005				
.XXXX	+/- 0.002				
ANGLES	+/- .5 DEG			SCALE:WT	
				SHEET 1 of 1	