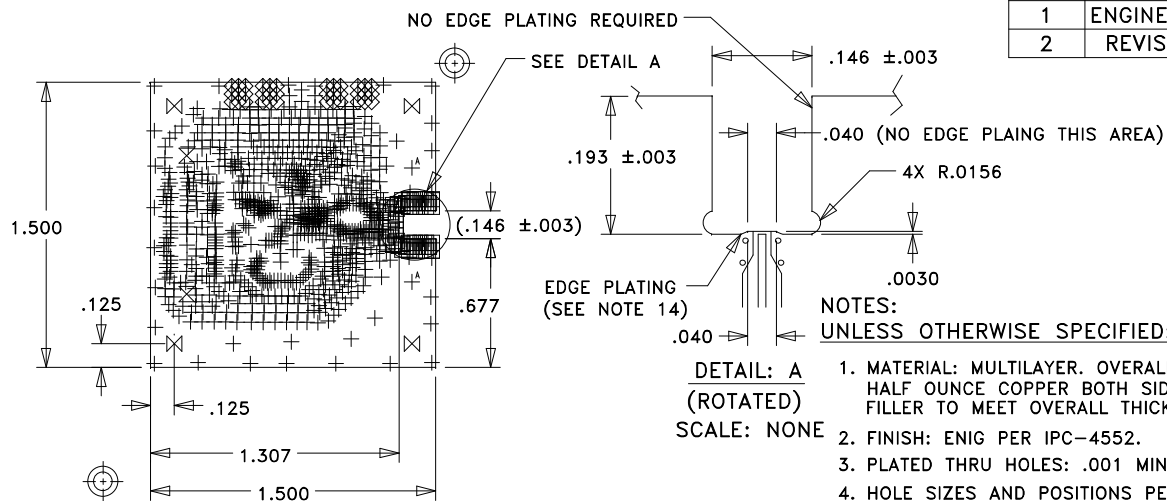


REVISION			
LTR	DESCRIPTION	DATE	APPROVED
1	ENGINEERING RELEASE	01/05/15	V. LY
2	REVISED PER QC150399	03/17/15	V. LY



ANALOG DEVICES, INC.  
600-01361-00-2  
DRILL DRAWING

SIZE	QTY	SYM	PLATED	TOL
6	823	+	YES	+/-3 FILLED
8	52	□	YES	+/-3 FILLED
14	36	◇	YES	+/-3
40	2	⊗	NO	+/-3
102	4	⊗	YES	+/-3
127	2	⊕ <sup>A</sup>	YES	+/-3

NOTES:  
UNLESS OTHERWISE SPECIFIED:

1. MATERIAL: MULTILAYER. OVERALL STACKUP AS SHOWN. TYPE ROGERS 4350B HALF OUNCE COPPER BOTH SIDES, 370HR OR EQUIVALENT TO BE USED AS FILLER TO MEET OVERALL THICKNESS.
2. FINISH: ENIG PER IPC-4552.
3. PLATED THRU HOLES: .001 MINIMUM WALL THICKNESS.
4. HOLE SIZES AND POSITIONS PER ARTWORK AND/OR DRILL FILE.
5. ALL HOLES TO BE LOCATED WITHIN  $\pm.003$  OF THE CENTER OF THE PAD OR OTHER TRUE POSITION.
6. FRONT TO BACK REGISTRATION  $\pm.003$  MAX.
7. BOARD WARPAGE:  $<.010$  PER LINEAR INCH.
8. SILKSCREEN BOTH SIDES WITH WHITE EPOXY INK.
9. SOLDERMASK OVER BARE COPPER BOTH SIDES. COLOR: GREEN REGISTRATION:  $\pm.004$  MAX.
10. "SIZE" IN DRILL LEGEND IS IN MILS AND REFERS TO FINISHED HOLE SIZE.
11. MANUFACTURE PER IPC-6012 CLASS 2.
12. ARTWORK IS 1:1 VENDOR TO ADJUST FOR ETCH FACTOR.

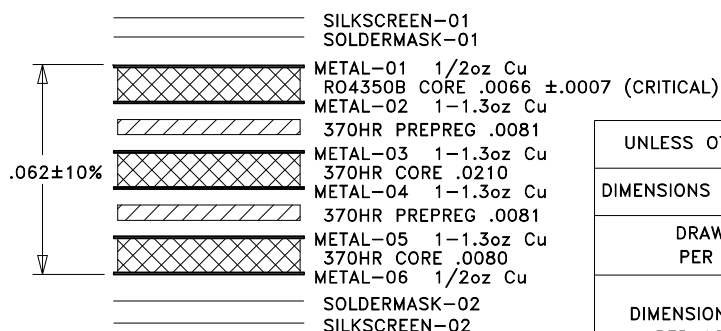
#### SPECIAL REQUIREMENTS:

13. CRITICAL LINE WIDTH =  $.012 \pm .001$  ON METAL-01. ADJUST PROCESS TO ACHIEVE WIDTH.  
METAL-03: DIFFERENTIAL IMPEDANCE OF 100 OHMS  $\pm 10\%$  ON DUAL 7 MIL TRACES WITH 10 MIL SPACING.  
METAL-05: DIFFERENTIAL IMPEDANCE OF 100 OHMS  $\pm 10\%$  ON DUAL 6 MIL TRACES WITH 10 MIL SPACING.
14. EDGE PLATING MUST CONNECT METAL-01, METAL-02, METAL-05 AND METAL-06.
15. ALL VIAS TO BE FILLED WITH NON-CONDUCTIVE VIA FILL AND OVERPLATED WITH Cu BOTH SIDES.

#### VENDOR NOTES:

16. VENDOR MAY ADD E-TEST STAMP TO PCB. VENDOR SHALL NOT ADD NAME, LOGO, DATE CODE, UL LISTING OR ANY OTHER MARKING TO ANY VISIBLE LAYER.
17. BOARDS MUST PASS VISUAL INSPECTION PER IPC-A-600 CLASS 2.

PROPRIETARY TO ANALOG DEVICES



#### LAYER STACKUP

UNLESS OTHERWISE SPECIFIED:	DRAWN BY	DATE DRN
	V. LY	12/01/14
DIMENSIONS ARE IN INCHES [mm]	CHECKED BY	
	ENGINEER	12/01/14
DRAWING PRACTICES PER ASME Y14.100		
INTERPRET DIMENSIONS & TOLERANCES PER ASME Y14.5-2009		
TOLERANCES:	THIRD ANGLE PROJECTION	
.XX $\pm .01$	DO NOT SCALE DRAWING	
.XXX $\pm .005$		
.XXX $\pm .0020$		
ANGLES $\pm .5$ DEG.		



2 Elizabeth Drive  
Chelmsford, MA 01824  
978-250-3343  
Fax: 978-250-3373

TITLE			
PCB, TX MODULE			
SIZE	CODE ID NO.	DWG NO.	REV
A	1CN88	600-01361-00	2
SCALE: 1:1		WT:	SHEET: 1 OF 1

NEXT ASSY	USED ON