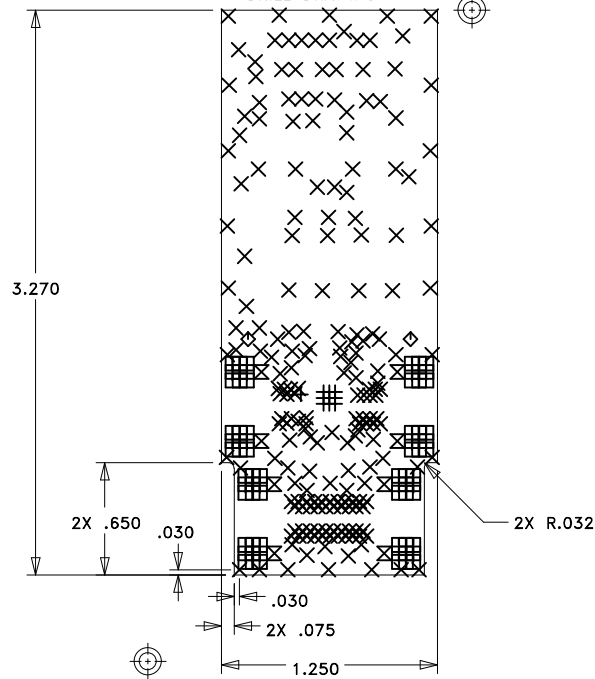
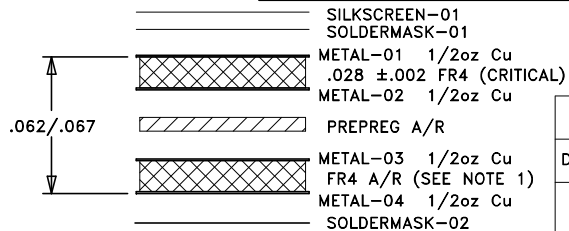


HITTITE MICROWAVE
600-00419-00-2
DRILL DRAWING



SIZE	QTY	SYM	PLATED	TOL
10	10	+	YES	+/-3
14	205	X	YES	+/-3
18	72	□	YES	+/-3
43	2	◇	YES	+/-2
80	8	⊗	YES	+/-3




LAYER STACKUP

NEXT ASSY	USED ON
-----------	---------

UNLESS OTHERWISE SPECIFIED:	
DIMENSIONS ARE IN INCHES [mm]	
DRAWING PRACTICES PER ASME Y14.100	
INTERPRET DIMENSIONS & TOLERANCES PER ASME Y14.5-2009	
TOLERANCES:	
.XX	± .01
.XXX	± .005
.XXXX	± .0020
ANGLES	± .5 DEG.

DRAWN BY	DATE DRN
V. LY	03/14/12
CHECKED BY	
ENGINEER	
H. NGUYEN	
THIRD ANGLE PROJECTION	
DO NOT SCALE DRAWING	

PROPRIETARY TO HITTITE MICROWAVE CORPORATION			
 HITTITE MICROWAVE CORPORATION 20 Alpha Road Chelmsford, MA 01824			
TITLE			
PCB, EVAL, 75 OHMS			
SIZE	CODE ID NO.	DWG NO.	REV
A	1CN88	600-00419-00	2
SCALE: 1:1		WT:	SHEET: 1 OF 1

NOTES:

UNLESS OTHERWISE SPECIFIED:

1. MATERIAL: MULTILAYER. OVERALL STACKUP AS SHOWN. TYPE FR4, HALF OUNCE COPPER BOTH SIDES.
2. FINISH: GOLD PLATE PER ASTM B-488, TYPE III, CODE A, 8 TO 40 MICROINCHES, OVER NICKEL PER QQ-N-290, 100 MICROINCHES MINIMUM.
3. PLATED THRU HOLES: .001 MINIMUM WALL THICKNESS.
4. HOLE SIZES AND POSITIONS PER ARTWORK AND/OR DRILL FILE.
5. ALL HOLES TO BE LOCATED WITHIN ±.003 OF THE CENTER OF THE PAD OR OTHER TRUE POSITION.
6. FRONT TO BACK REGISTRATION ±.003 MAX.
7. BOARD WARPAGE: <.010 PER LINEAR INCH.
8. SILKSCREEN TOP SIDE WITH WHITE EPOXY INK.
9. SOLDERMASK: LPI SOLDERMASK BOTH SIDES. COLOR: GREEN REGISTRATION: ±.004 MAX.
10. "SIZE" IN DRILL LEGEND IS IN MILS AND REFERS TO FINISHED HOLE SIZE.
11. MANUFACTURE PER IPC-6012 CLASS 2.
12. PLATING THICKNESS .002 ±.0005 FOR METAL-01 AND METAL-04.
13. ARTWORK IS 1:1 VENDOR TO ADJUST FOR ETCH FACTOR.

SPECIAL REQUIREMENTS:

14. CRITICAL LINE WIDTH = .020 ±.001 ON METAL-01. ADJUST PROCESS TO ACHIEVE WIDTH.

VENDOR NOTES:

15. VENDOR MAY ADD E-TEST STAMP TO PCB. VENDOR SHALL NOT ADD NAME, LOGO, DATE CODE, UL LISTING OR ANY OTHER MARKING TO ANY VISIBLE LAYER.
16. BOARDS MUST PASS VISUAL INSPECTION PER IPC-A-600 CLASS 2.