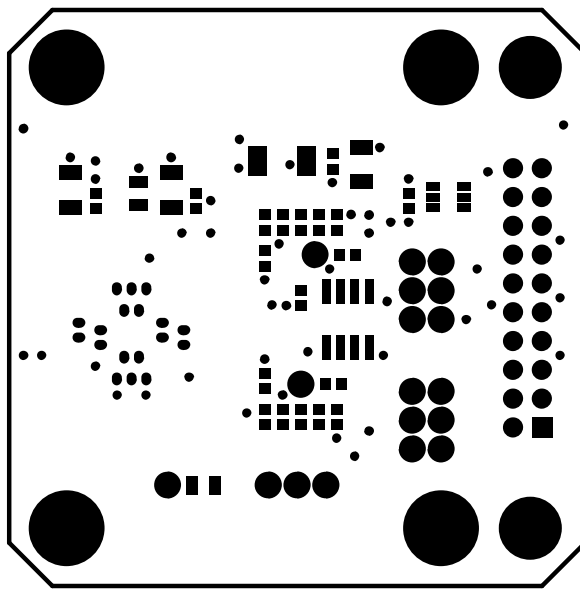
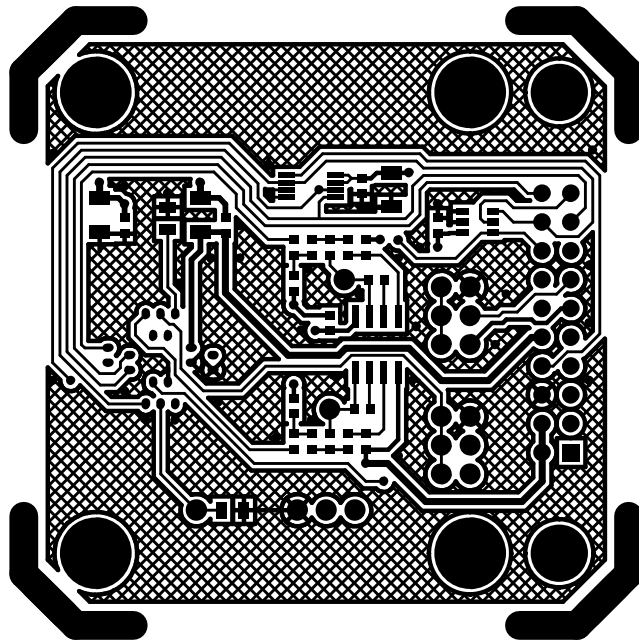


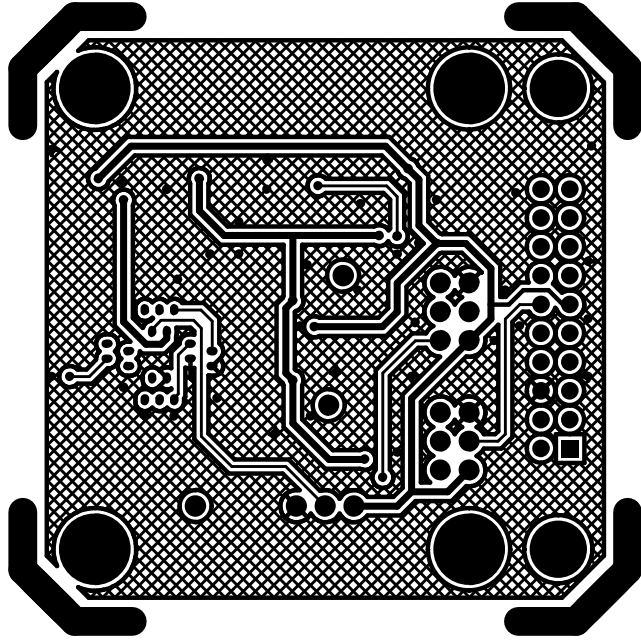
ADXRS290 SOCKET SATELLITE PCB
 SILKSCREEN LAYER 1 (TOP)



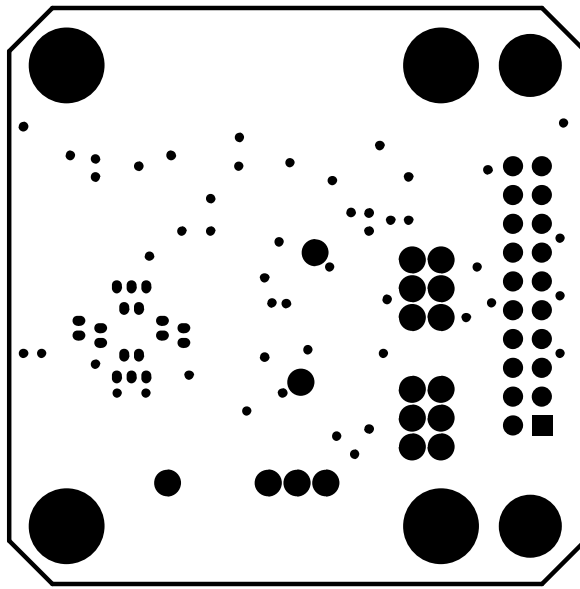
ADXRS290 SOCKET SATELLITE PCB
SOLDERMASK LAYER 1 (TOP)



ADXRS290 SOCKET SATELLITE PCB
LAYER 1 (TOP)

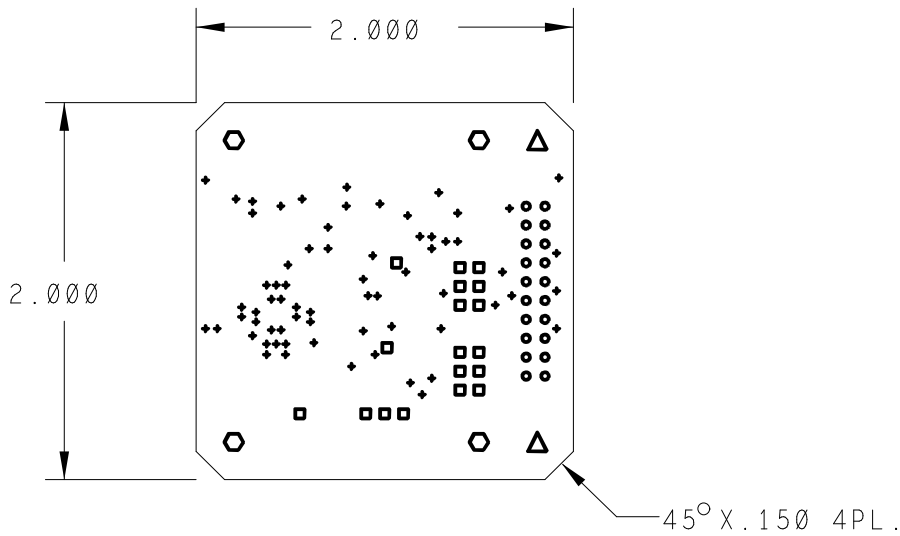


ADXR2590 SOCKET SATELLITE PCB
LAYER 5 (BOTTOM)



ADDRESS SOCKET SATELLITE PCB
SOLDERMASK LAYER 2 (BOTTOM)

PCB VIEWED FROM LAYER 1 (TOP)



NOTES :

1. PCB SPEC: PCB SHALL BE MANUFACTURED TO MEET ALL SPECIFICATIONS AND REQUIREMENTS OF IPC-6011 AND IPC-6012, CLASS 2 EXCEPT AS NOTED.
2. MATERIAL: EPOXY GLASS, TYPE FR4, 0.062" THICK, 1 OZ CU PLATE BOTH SIDES, DK 4.3-4.5 COLOR GREEN, PHOTOIMAGEABLE TYPE PER IPC SM-840, TYPE B, CLASS 2. APPLY OVER BARE COPPER TO BOTH SIDES OF PCB.
3. SOLDER MASK: IMMERSION GOLD (NIG); APPLY WHITE EPOXY INK TO COMPONENT SIDE OF PCB. ADD VENDOR ID AND DATE CODE TO SILKSCREEN TOP.
4. FINISH: IMMERSION GOLD (NIG);
5. SILKSCREEN: APPLY WHITE EPOXY INK TO COMPONENT SIDE OF PCB. ADD VENDOR ID AND DATE CODE TO SILKSCREEN TOP.
6. DRILL SIZES: HOLES SIZES IN DRILL LEGEND REPRESENT FINISHED SIZE AFTER PLATING. MIN THICKNESS TO BE 0.0015"
7. PHOTOTOOLS: ON FINISHED PCB'S, COPPER ETCH IS TO BE WITHIN +/- 0.0005" OF PHOTOTOOL DATA.

| DRILL CHART: TOP to BOTTOM | | | |
|----------------------------|------|--------|-----|
| ALL UNITS ARE IN MILS | | | |
| SYMBOL | SIZE | FINISH | QTY |
| + | 20 | PLATED | 67 |
| ● | 38 | PLATED | 20 |
| ■ | 43 | PLATED | 18 |
| △ | 109 | PLATED | 2 |
| ○ | 125 | PLATED | 4 |

| | | | | | | | | | | | | | | | | |
|---------|--|----------|--|------|---|----------|------------|---------|-----------------------|--|-----------------------------|---------|----------|------|--------|--|
| | | | | | TITLE / TITRE PCB DETAIL ADXRS290 SOCKET SATELLITE BOARD | | | | | | | | | | | |
| | | | | | DWN/DESS | | DATE | | CHK/VER | | DATE | | APPD/APP | | DATE | |
| | | | | | DK | | 2011-08-30 | | | | | | | | | |
| | | | | | A | | DWG NO. | | NO. DU DESSIN | | rs290_sat_sk | | | | | |
| | | | | | SCALE/ECHELLE | | 1:1 | | INTEMPCO CONTROLS LTD | | LES CONTROLES INTEMPCO LTEE | | SHEET | | 1 OF 1 | |
| LTR/LET | | REVISION | | DATE | | DWN/DESS | | CHK/VER | | | | FEUILLE | | 1 DE | | |

CE DESSIN ET SES SPECIFICATIONS SONT LA PROPRIETE DE LES CONTROLES INTEMPCO LTEE. IL NE PEUVENT ETRE PRETES, TRANSFERES, REPRODUITS, COPIES OU SERVIR A LA FABRICATION, L'ACHAT OU LA VENTE D'ARTICLES SANS LE CONSENTEMENT ECRIT DE LES CONTROLES INTEMPCO LTEE.
 THIS DRAWING AND SPECIFICATIONS HEREIN ARE THE PROPERTY OF INTEMPCO CONTROLS LTD AND MUST NOT BE LOANED OR OTHERWISE TRANSFERRED TO ANY THIRD PARTY OR REPRODUCED, COPIED OR USED IN CONNECTION WITH THE MANUFACTURE PURCHASE OR SALE OF ITEMS WITHOUT WRITTEN CONSENT OF INTEMPCO CONTROLS LTD.