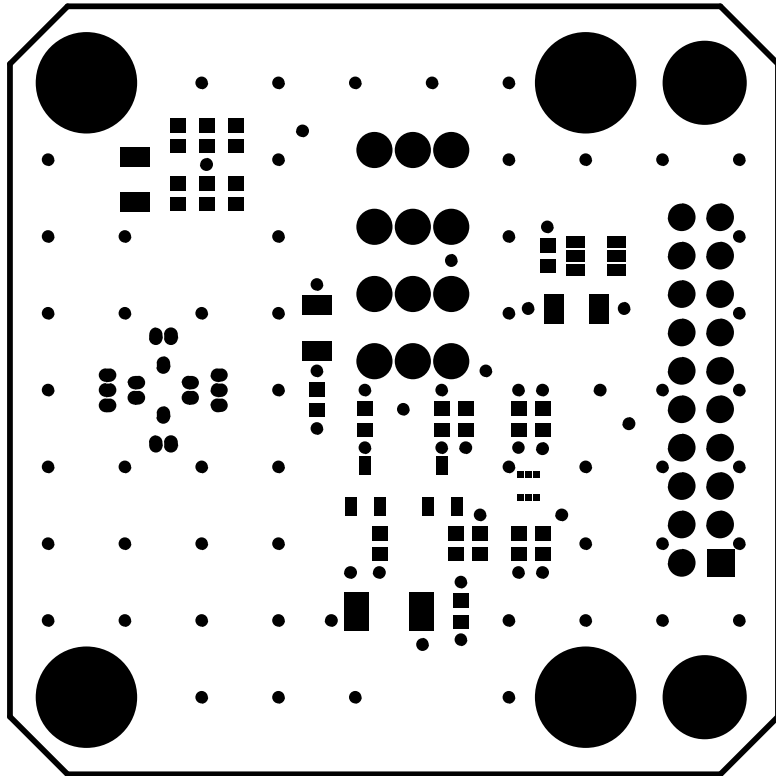
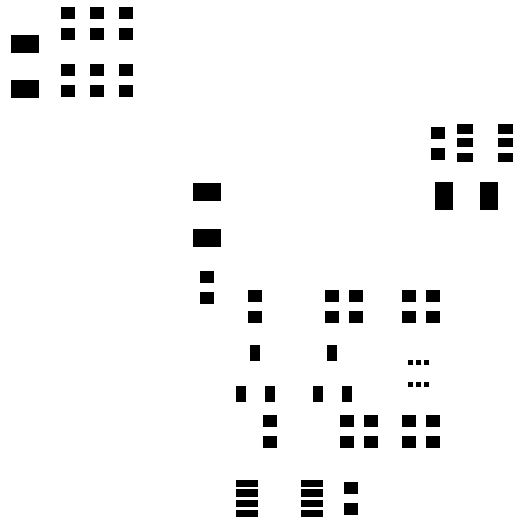


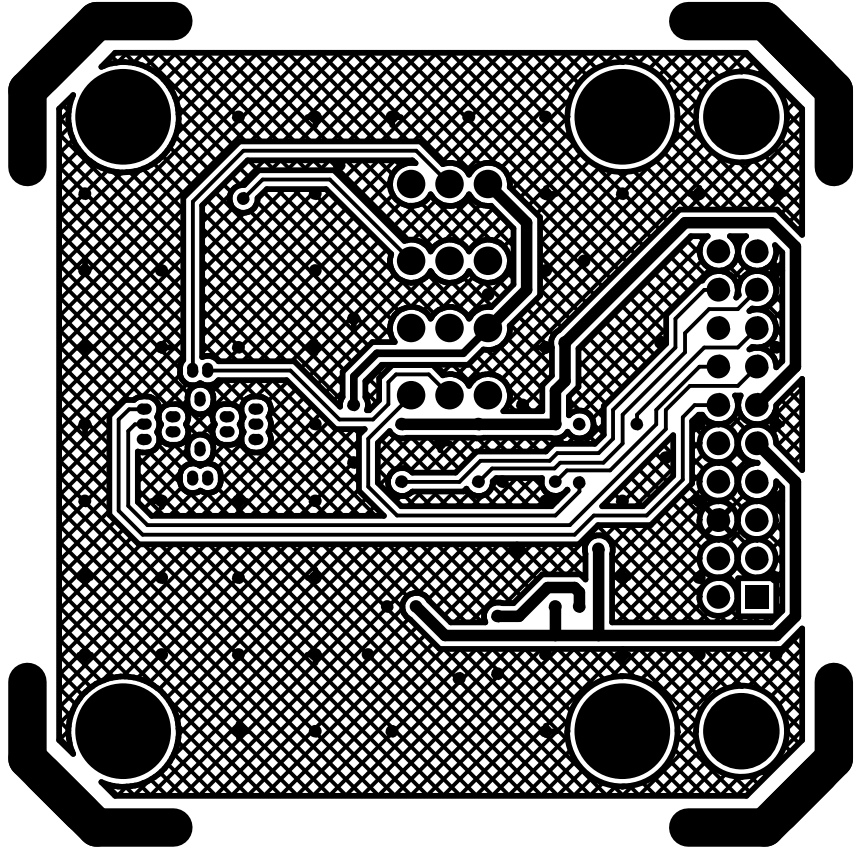
XL350 SATELLITE
LAYER 1 (TOP)



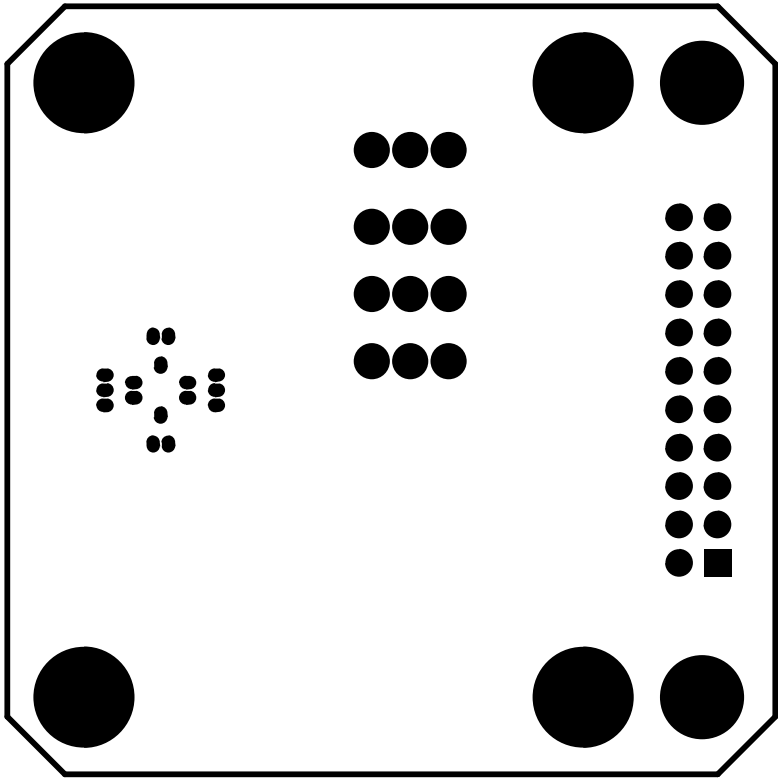
XL350 SATELLITE
SOLDERMASK LAYER 1 (TOP)



XL350 SATELLITE
PASTEMASK LAYER 1 (TOP)

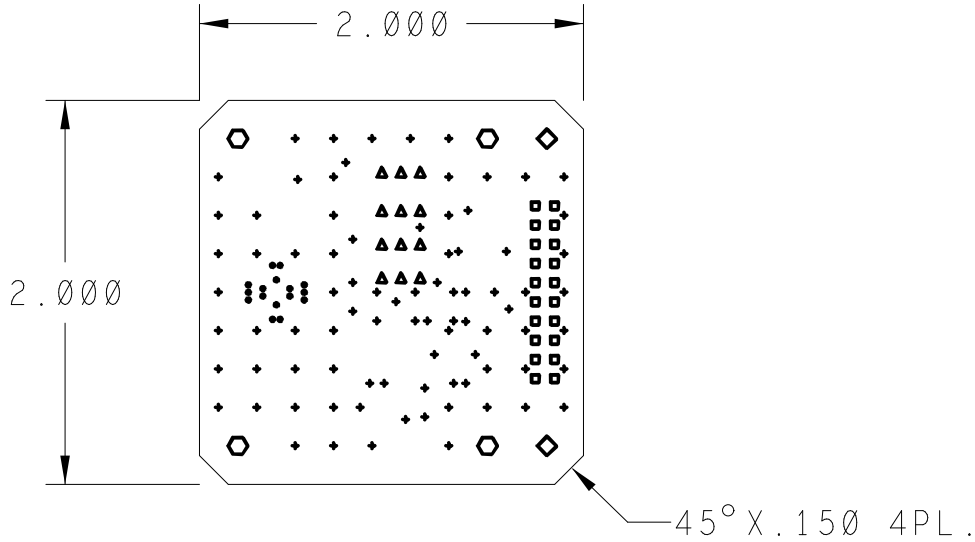


LAYER 5 (BOTTOM)
XL320 SATELLITE



SOLDERMASK LAYER 2 (BOTTOM)
XL350 SATELLITE

PCB VIEWED FROM LAYER 1 (TOP)



NOTES :

1. PCB SPEC: PCB SHALL BE MANUFACTURED TO MEET ALL SPECIFICATIONS AND REQUIREMENTS OF IPC-6011 AND IPC-6012, CLASS 2 EXCEPT AS NOTED.
2. MATERIAL: EPOXY GLASS, TYPE FR4, 0.062" THICK, 1 OZ CU PLATE BOTH SIDES. DK 4.3-4.5
3. SOLDER MASK: COLOR GREEN, PHOTOIMAGEABLE TYPE PER IPC SM-840, TYPE B, CLASS 2. APPLY OVER BARE COPPER TO BOTH SIDES OF PCB.
4. FINISH: IMMERSION GOLD (NIG) OR SILVER, WHITE TIN IS ACCEPTABLE.
5. SILKSCREEN: APPLY WHITE EPOXY INK TO COMPONENT SIDE OF PCB. ADD VENDOR ID AND DATE CODE TO SILKSCREEN TOP.
6. DRILL SIZES: HOLES SIZES IN DRILL LEGEND REPRESENT FINISHED SIZE AFTER PLATING. MIN THICKNESS TO BE 0.0015".
7. PHOTOTOOLS: ON FINISHED PCB'S, COPPER ETCH IS TO BE WITHIN +/- 0.0005" OF PHOTOTOOL DATA.

DRILL CHART: TOP to BOTTOM			
ALL UNITS ARE IN MILS			
SYMBOL	SIZE	FINISH	QTY
•	20	PLATED	16
+	20	PLATED	85
□	38	PLATED	20
▲	43	PLATED	12
◇	109	PLATED	2
⬡	125	PLATED	4

					TITLE / TITRE PCB DETAIL XL350 SATELLITE PCB					
					DWN/DESS DATE DK 2011-05-30		CHK/VER DATE		APPD/APP DATE	
					A DWG NO. NO. DU DESSIN x1350_sat					
					SCALE/ECHELLE 1:1		INTEMPCO CONTROLS LTD LES CONTROLES INTEMPCO LTEE		SHEET 1 OF 1 FEUILLE 1 DE 1	

CE DESSIN ET SES SPECIFICATIONS SONT LA PROPRIETE DE LES CONTROLES INTEMPCO LTEE. IL NE PEUVENT ETRE PRETES, TRANSFERES, REPRODUITS, COPIES OU SERVIR A LA FABRICATION, L'ACHAT OU LA VENTE D'ARTICLES SANS LE CONSENTEMENT ECRIT DE LES CONTROLES INTEMPCO LTEE.
THIS DRAWING AND SPECIFICATIONS HEREIN ARE THE PROPERTY OF INTEMPCO CONTROLS LTD AND MUST NOT BE LOANED OR OTHERWISE TRANSFERRED TO ANY THIRD PARTY OR REPRODUCED, COPIED OR USED IN CONNECTION WITH THE MANUFACTURE PURCHASE OR SALE OF ITEMS WITHOUT WRITTEN CONSENT OF INTEMPCO CONTROLS LTD.