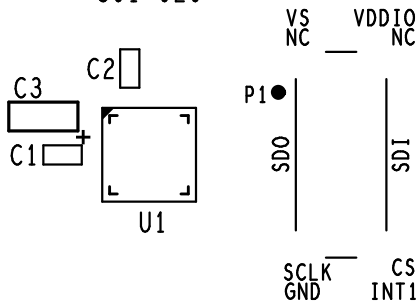


ADXL312Z EVAL BOARD

ANALOG DEVICES

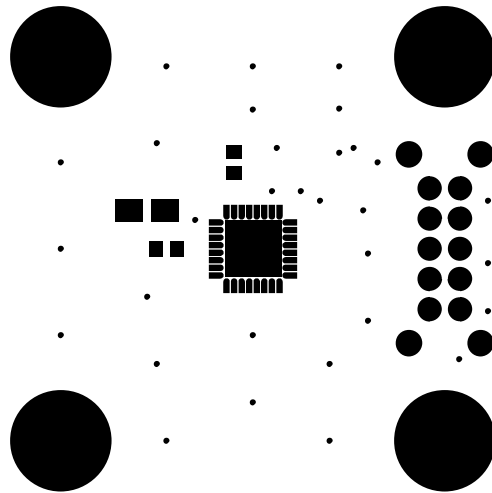
301-626



301-626

PSS

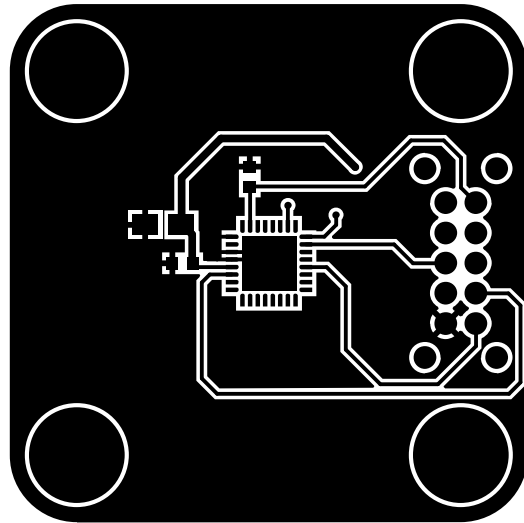
Primary (Top) Silkscreen



301 - 626

P S M

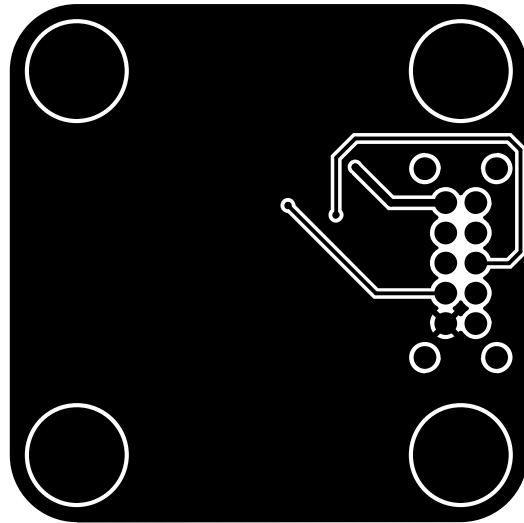
Primary (Top) Soldermask



301 - 626

PRI

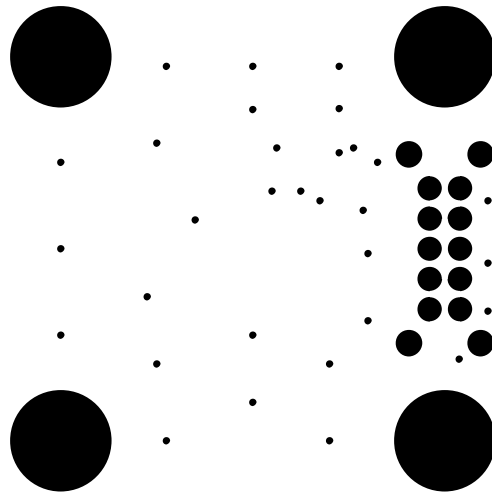
First (Top) Copper Layer



301 - 626

SEC

Second (Bottom) Copper Layer

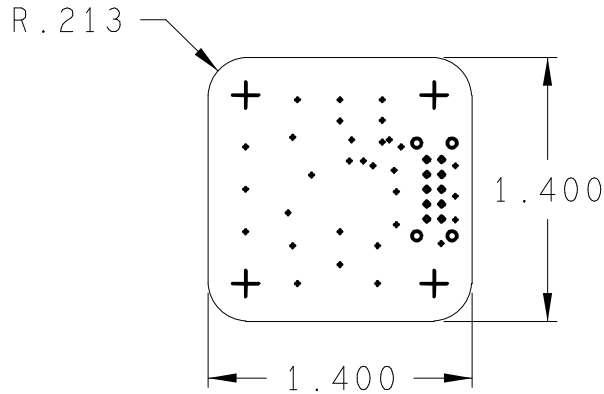


301 - 626

SSM

Secondary (Bottom) Soldermask

PCB VIEWED FROM LAYER 1 (TOP)



301-626
FAB

NOTES :

1. PCB SPEC: PCB SHALL BE MANUFACTURED TO MEET ALL SPECIFICATIONS AND REQUIREMENTS OF IPC-6011 AND IPC-6012, CLASS 2 EXCEPT AS NOTED.
2. MATERIAL: EPOXY GLASS, TYPE FR4, 0.125" THICK, 1 OZ CU PLATE BOTH SIDES. DK 4,3-4,5
3. SOLDER MASK: COLOR GREEN, PHOTOIMAGEABLE TYPE PER IPC SM-840, TYPE B, CLASS 2. APPLY OVER BARE COPPER TO BOTH SIDES OF PCB.
4. FINISH: PREFERRED IS IMMERSION AG, NIG, WHITE TIN. UNFUSED SN/PB IS ACCEPTABLE. HASL (OR HOT OIL) IS LEAST PREFERRED.
5. SILKSCREEN: APPLY WHITE EPOXY INK TO COMPONENT SIDE OF PCB. ADD VENDOR ID AND DATE CODE TO SILKSCREEN TOP.
6. DRILL SIZES: HOLES SIZES IN DRILL LEGEND REPRESENT FINISHED SIZE AFTER PLATING. MIN THICKNESS TO BE 0.0015".
7. PHOTOTOOLS: ON FINISHED PCB'S, COPPER ETCH IS TO BE WITHIN +/- 0.0005" OF PHOTOTOOL DATA.

DRILL CHART			
ALL UNITS ARE IN MILS			
SYMBOL	SIZE	FINISH	QTY
•	10.0	PLATED	31
◊	32.0	PLATED	10
○	35.0	PLATED	4
+	140.0	PLATED	4

					TITLE / TITRE ADXL312Z EVAL BOARD						
					DWN/DESS GL	DATE 2014-07-14	CHK/VER DR	DATE 2014-07-14	APPD/APP DR	DATE 2014-07-14	
					A	DWG NO. NO. DU DESSIN		301-626			
					SCALE/ECHELLE 1 : 1		INTEMPCO CONTROLS LTD LES CONTROLES INTEMPCO LTEE		SHEET FEUILLE		1 OF DE 1
LTR/LET	REVISION	DATE	DWN/DESS	CHK/VER							

CE DESSIN ET SES SPECIFICATIONS SONT LA PROPRIETE DE LES CONTROLES INTEMPCO LTEE. IL NE PEUVENT ETRE PRETES, TRANSFERES, REPRODUITS, COPIES OU SERVIR A LA FABRICATION, L'ACHAT OU LA VENTE D'ARTICLES SANS LE CONSENTEMENT ECRIT DE LES CONTROLES INTEMPCO LTEE.
THIS DRAWING AND SPECIFICATIONS HEREIN ARE THE PROPERTY OF INTEMPCO CONTROLS LTD AND MUST NOT BE LOANED OR OTHERWISE TRANSFERRED TO ANY THIRD PARTY OR REPRODUCED, COPIED OR USED IN CONNECTION WITH THE MANUFACTURE PURCHASE OR SALE OF ITEMS WITHOUT WRITTEN CONSENT OF INTEMPCO CONTROLS LTD.