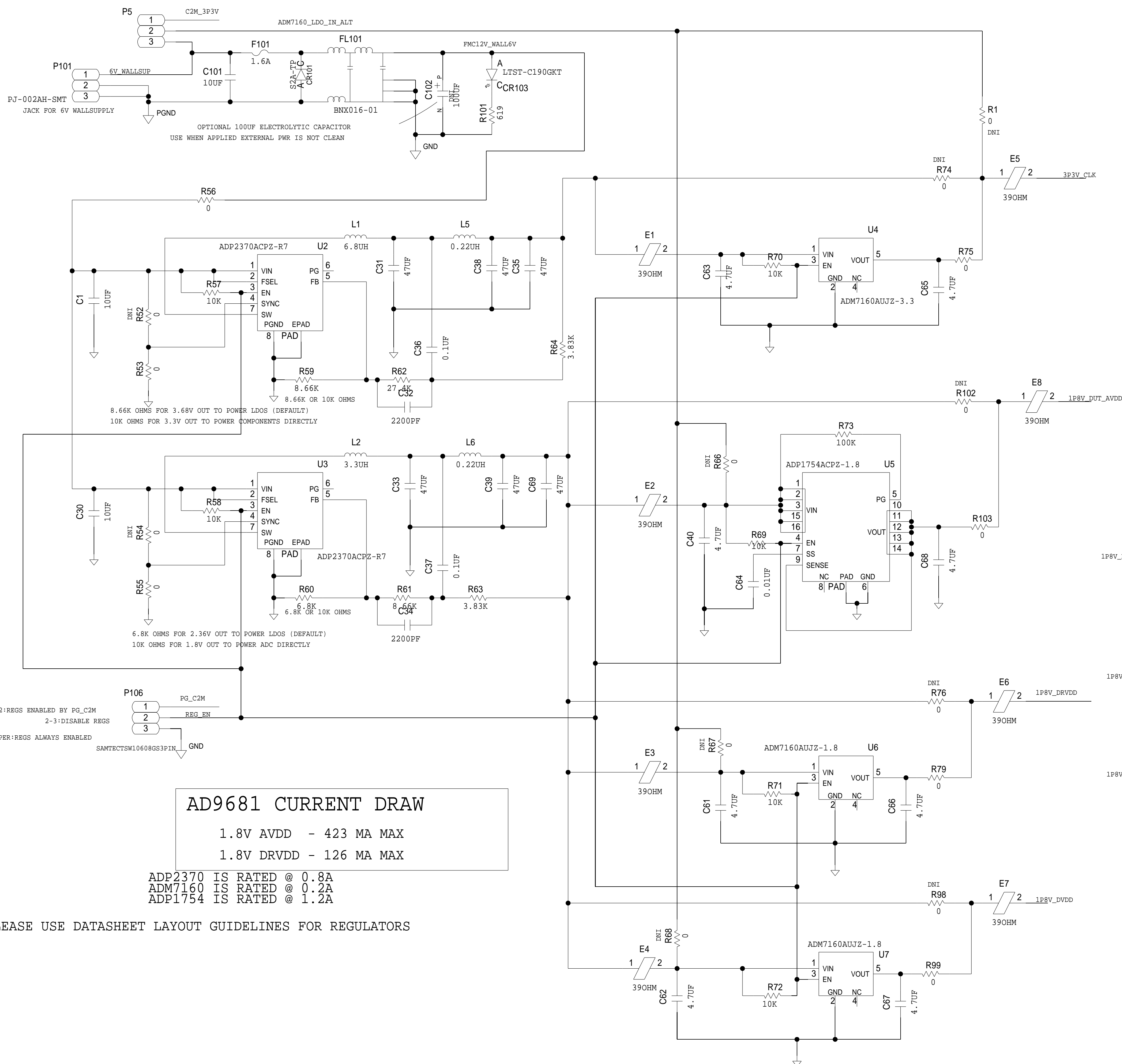


[illegible]

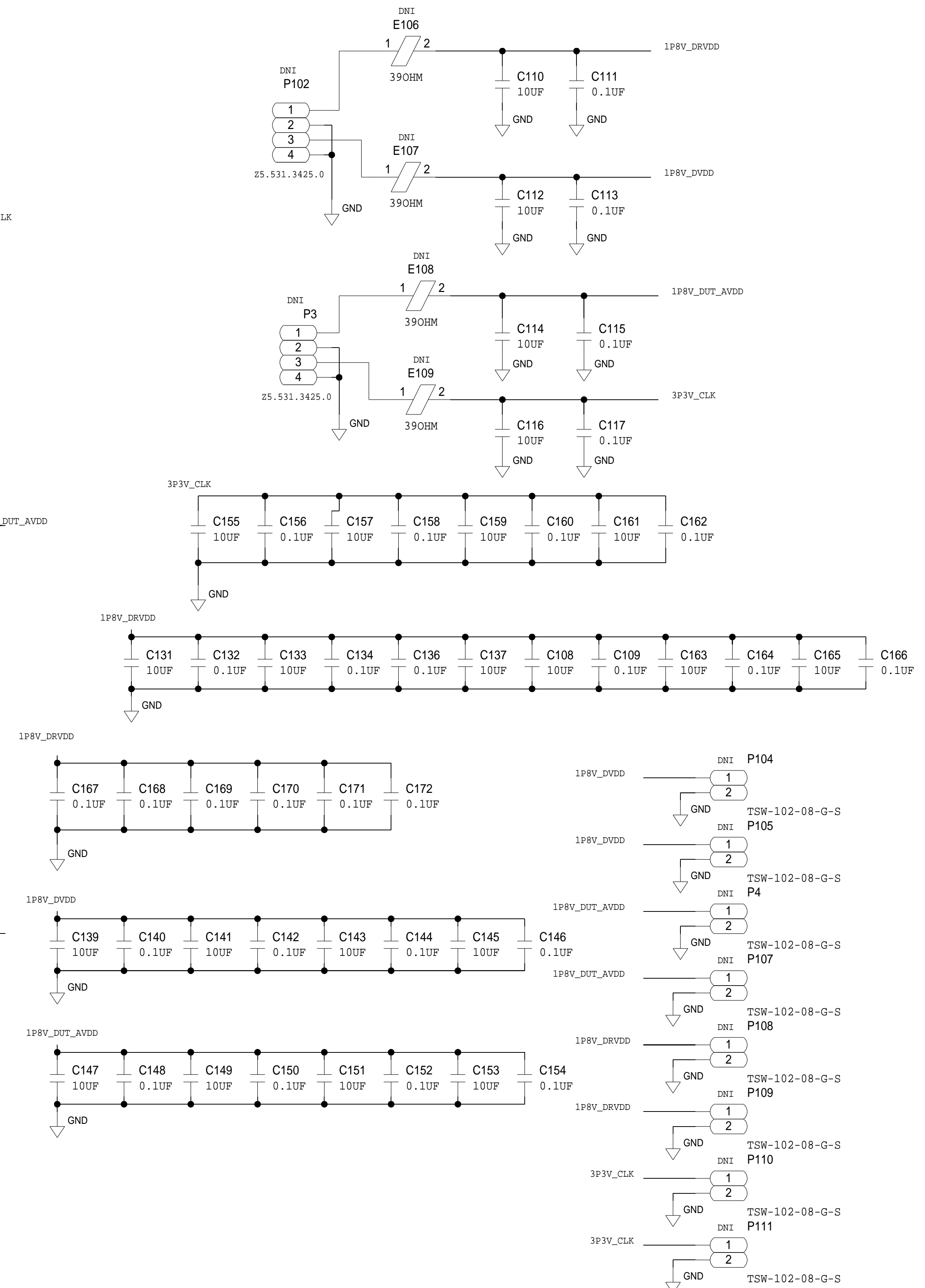
AD9681 POWER

POWER SUPPLY INPUT TO REGULATORS

```
SELECT PWR SOURCE
1 - 2: CONNECT 3.3V FROM CARRIER/FMC CONNECTOR
3 - 2: CONNECT 6V FROM WALL SUPPLY
```



DIRECT POWER SUPPLY INPUTS



AD9681 CURRENT DRAW

1.8V AVDD - 423 MA MAX

1.8V DRVDD - 126 MA MAX

ADP2370 IS RATED @ 0.8A
ADM7160 IS RATED @ 0.2A
ADP1754 IS RATED @ 1.2A

PLEASE USE DATASHEET LAYOUT GUIDELINES FOR REGULATORS

REVISIONS			
REV	DESCRIPTION	DATE	APPROVED

SCHEMATIC

CUSTOMER EVALUATION BOARD
FMC CONNECTOR
AD9681-125EBZ

	DESIGN VIEW
--	-------------

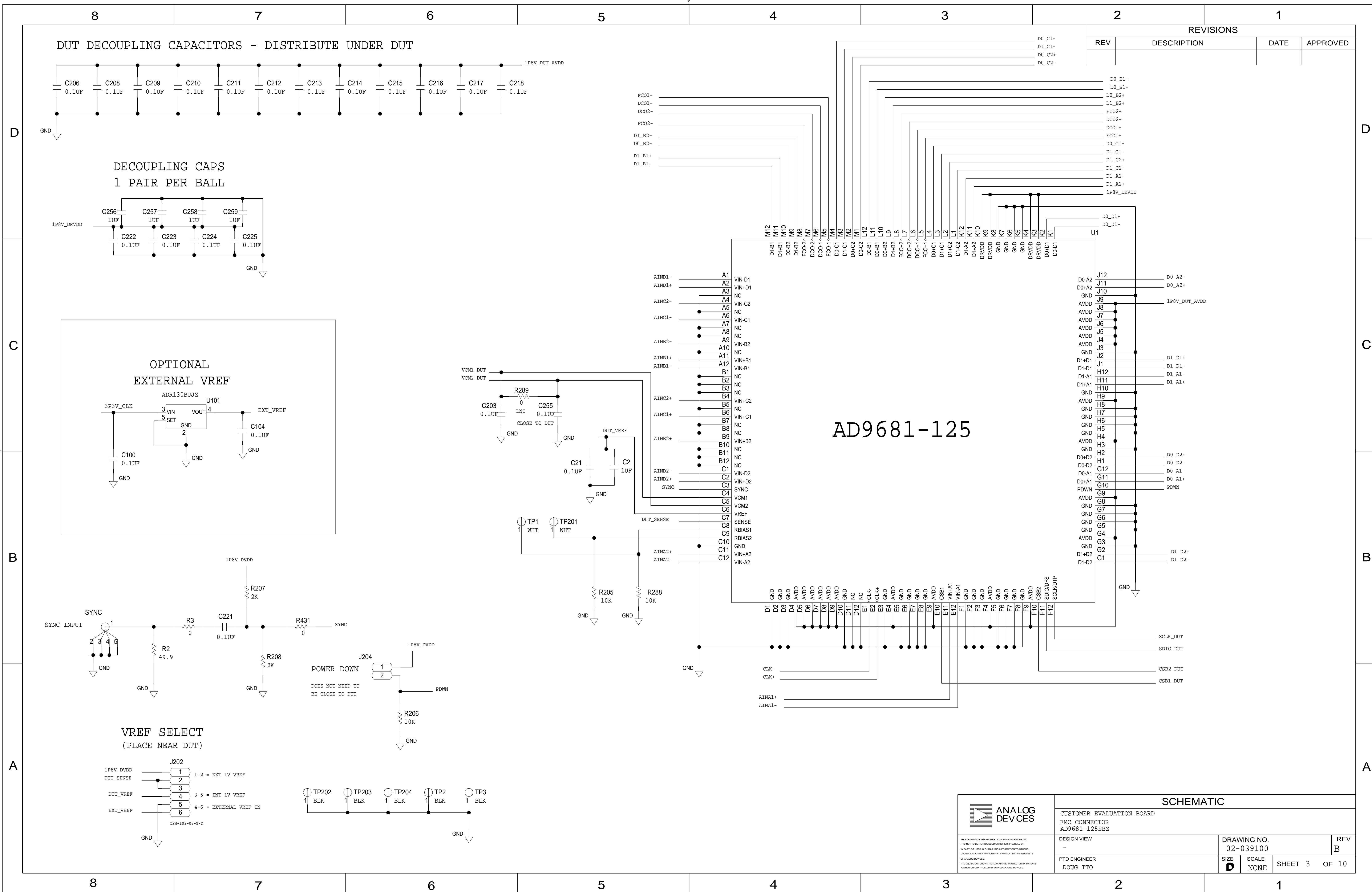
PTD ENGINEER
DOUG ITO

DRAWING NO.	02-039100
-------------	-----------

SIZE	SCALE
D	NONE

REV
B

df 10



8

7

6

5

4

3

2

1

REV

DESCRIPTION

DATE

APPROVED

SPI CIRCUITRY

DIRECT CONNECT TO HADV6

FPGA_SDIO

R4

0

FPGA_SCLK

R290

0

FPGA_CSB1

R5

0

FPGA_CSB2

R291

0

SDIO_DUT

SCLK_DUT

CSB1_DUT

CSB2_DUT

R309

10K

GND

R316

10K

GND

R317

10K

GND

R292

10K

GND

R313

100K

GND

R315

100K

GND

R314

100K

1P8V_DVDD

R293

100K

1P8V_DVDD

P1

1

2

3

4

5

6

7

8

9

10

11

12

TSW-104-08-G-T

1-2 = SPI MODE SDIO_DUT

2-3 = NON-SPI DFS (HIGH= 2'S COMP/LOW= OFFSET BINARY)

4-5 = SPI MODE SCLK_DUT

5-6 = NON-SPI DTP (HIGH= DIGITAL TEST PATTERN 1011)

8-9 = SPI MODE CSB1_DUT -- OPEN=PIN MODE

11-12 = SPI MODE CSB2_DUT -- OPEN=PIN MODE

EEPROM - BOARD ID

3P3V_C2M_EEPROM

R327

100K

DNI

R329

100K

DNI

R331

100K

DNI

R333

100K

DNI

GA1

R325

0

GA0

R326

0

R328

100K

GND

R330

100K

GND

R332

100K

GND

R334

100K

GND

U302

8

VCC

5

SDA

6

E2

7

WC_N

4

VSS

C315

0.1UF

GND

M24C02-WMN6TP

BRD_ID_SDA_B

PULLUP IS IN FPGA

BRD_ID_SCL

EEPROM - BOARD ID

ANALOG

DEVICES

THIS DRAWING IS THE PROPERTY OF ANALOG DEVICES INC.

IT IS NOT TO BE REPRODUCED OR COPIED IN WHOLE OR

IN PART, OR USED IN FURNISHING INFORMATION TO OTHERS,

OR FOR ANY OTHER PURPOSE DETRIMENTAL TO THE INTERESTS

OF ANALOG DEVICES.

THE EQUIPMENT SHOWN HEREON MAY BE PROTECTED BY PATENTS

OWNED OR CONTROLLED BY OWNED ANALOG DEVICES.

SCHEMATIC

CUSTOMER EVALUATION BOARD

FMC CONNECTOR

AD9681-125EBZ

DESIGN VIEW

-

DRAWING NO.

02-039100

REV

B

PTD ENGINEER

DOUG ITO

SIZE

D

SCALE

NONE

SHEET

4

OF

10

8

7

6

5

4

3

2

1

