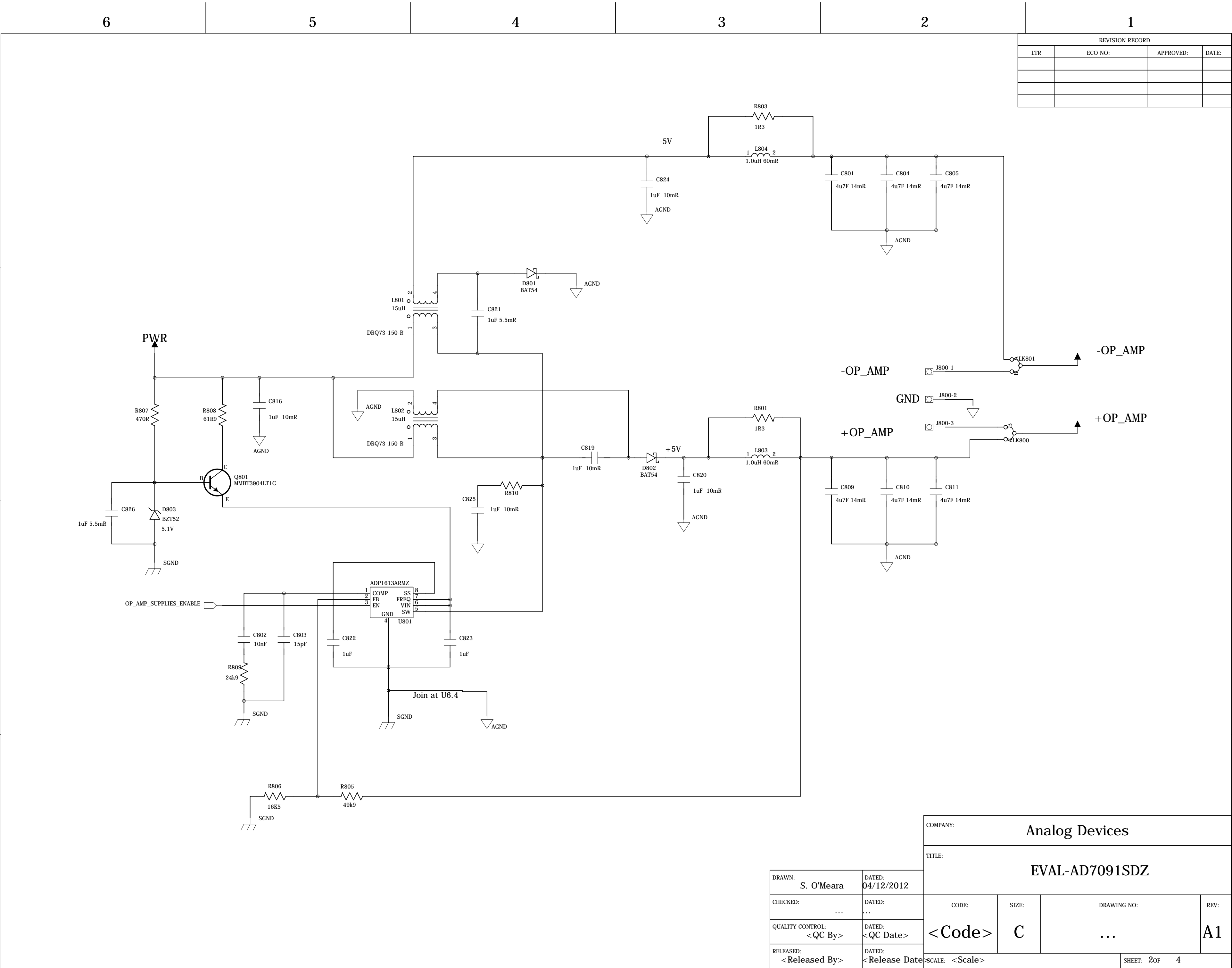


REVISION RECORD			
LTR	ECO NO:	APPROVED:	DATE:

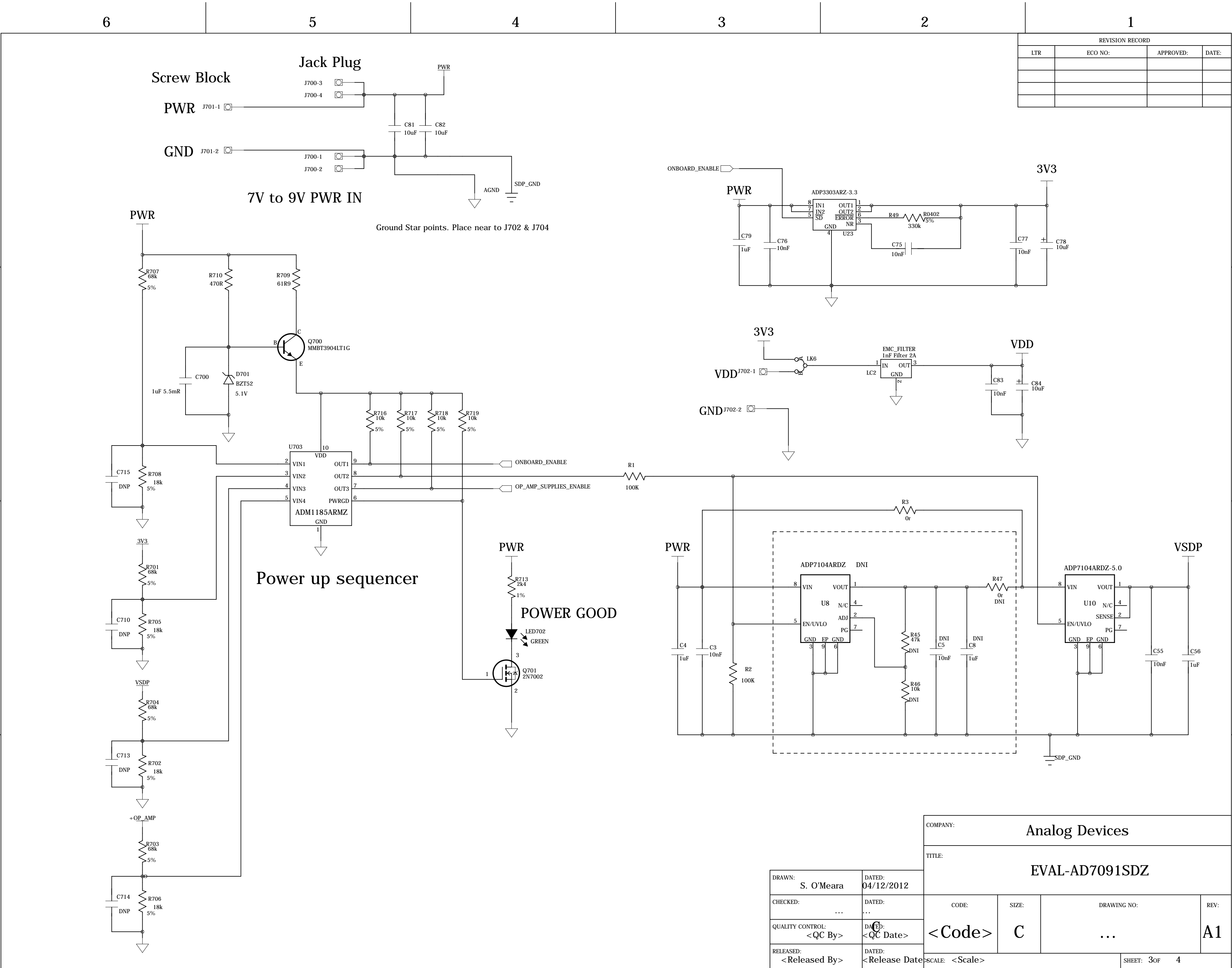
COMPANY: Analog Devices			
TITLE: EVAL-AD7091SDZ			
CODE:	SIZE: C	DRAWING NO: ...	REV: A1
SCALE:		SHEET: 1 of 4	

DRAWN: S. O'Meara	DATED: 04/12/2012
CHECKED: ...	DATED: ...
QUALITY CONTROL:	DATED:
RELEASED:	DATED:



REVISION RECORD			
LTR	ECO NO:	APPROVED:	DATE:

COMPANY:		Analog Devices	
TITLE:		EVAL-AD7091SDZ	
CODE:	SIZE:	DRAWING NO:	REV:
<Code>	C	...	A1
SCALE: <Scale>		SHEET: 2of 4	



6

5

4

3

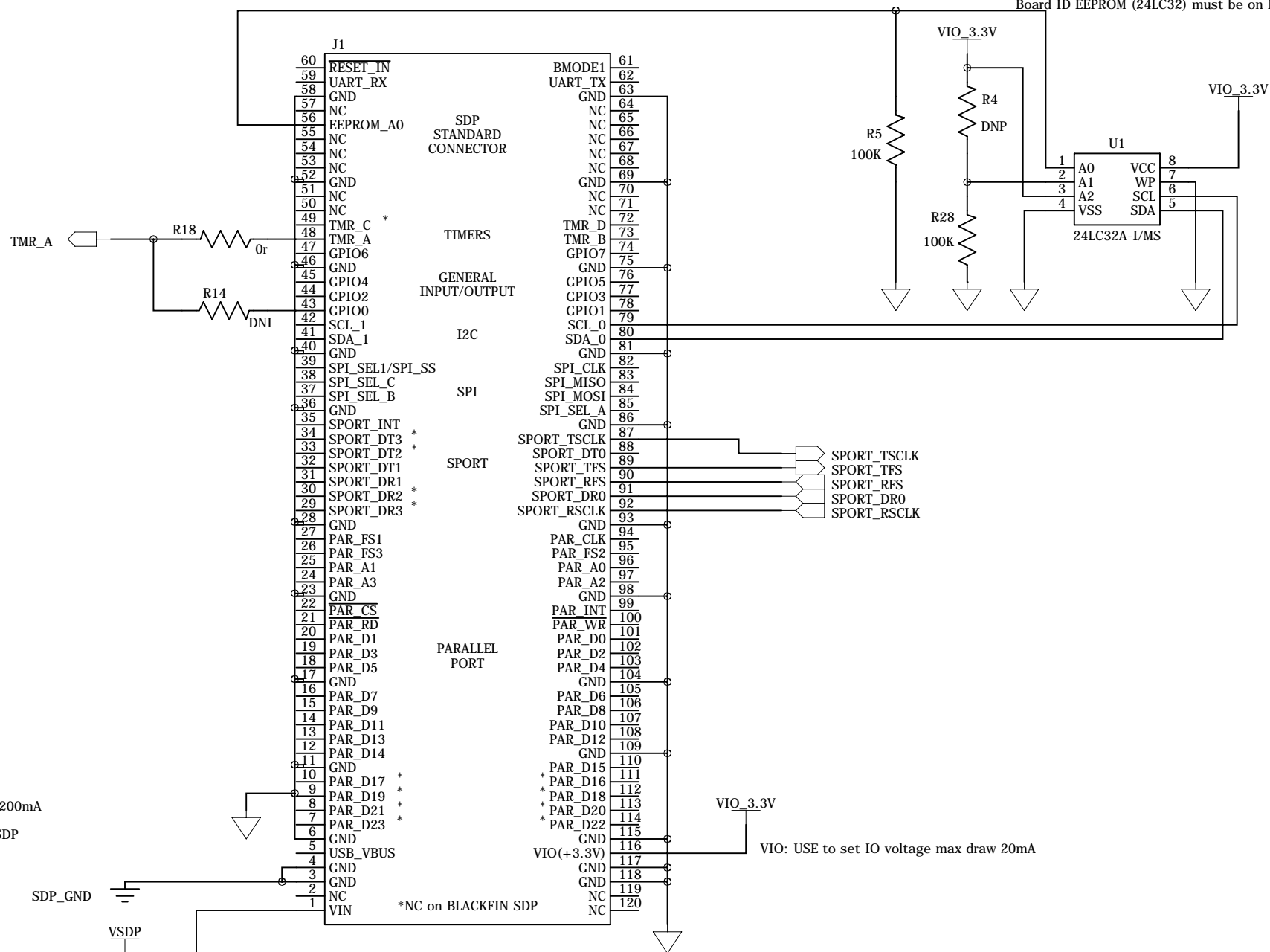
2

1

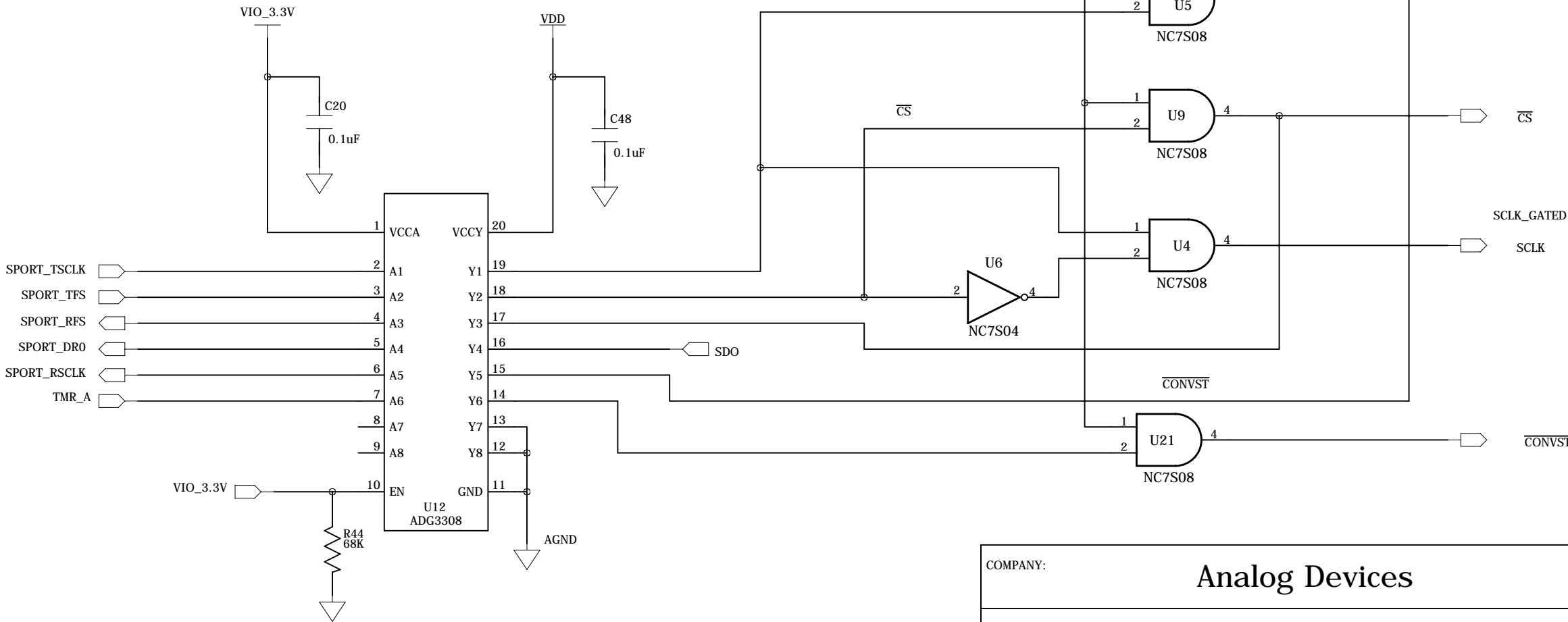
I2C bus 1 is common across both connectors on SDP - Pull up resistors required
BMODE1: Pull up with a 10K resistor to set SDP to boot from a SPI FLASH on the daughter board

Board ID EEPROM (24LC32) must be on I2C bus 0.

Board ID EEPROM (24LC32) must be on I2C bus 0.



VIN: Use this pin to power the SDP requires 5V 200mA
Use SDP_GND as return for VSDP



COMPANY: Analog Devices			
TITLE: EVAL-AD7091SDZ			
CODE:	SIZE: C	DRAWING NO: ...	REV: A1
SHEET: 4 of 4		SCALE: <Scale>	

DRAWN: S. O'Meara	DATED: 04/12/2012
CHECKED: ...	DATED: ...
QUALITY CONTROL: <QC By>	DATED: <QC Date>
RELEASED: <Released By>	DATED: <Release Date>