

6

5

4

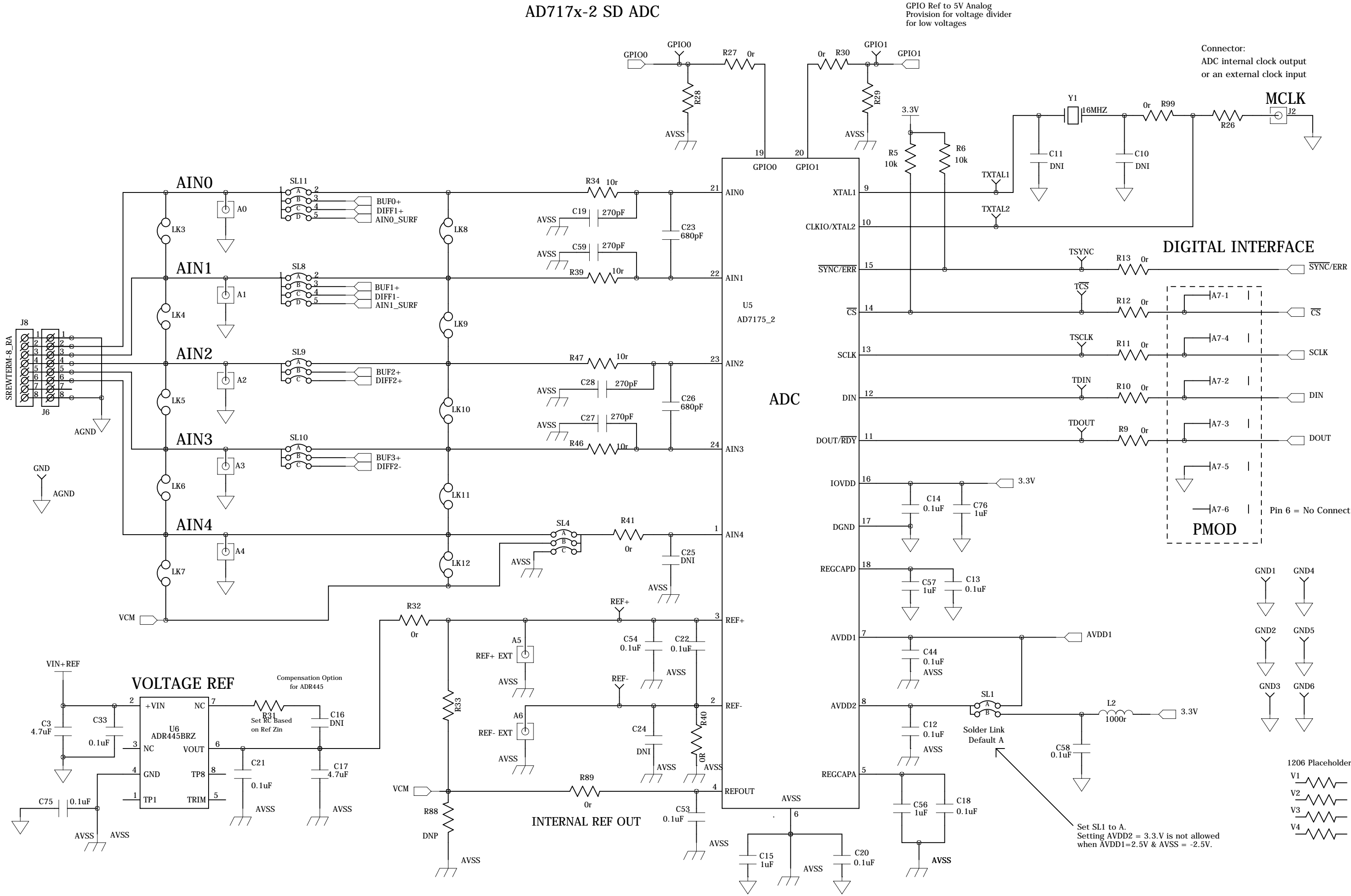
3

2

1

REVISION RECORD			
LTR	ECO NO:	APPROVED:	DATE:

AD717x-2 SD ADC



COMPANY: Analog Devices International			
TITLE: EVAL-AD717x-2SDZ			
CODE:	SIZE: A2	DRAWING NO: 02-039441	REV: E
SCALE: N/A		SHEET: 1 of 5	

DRAWN: Pat Sheahan	DATED: 3-Sept 2014
CHECKED: Rob Kiely	DATED: 3-Sept 2014
QUALITY CONTROL: <QC By>	DATED: <QC Date>
RELEASED: <Released By>	DATED: <Release Date>

6

5

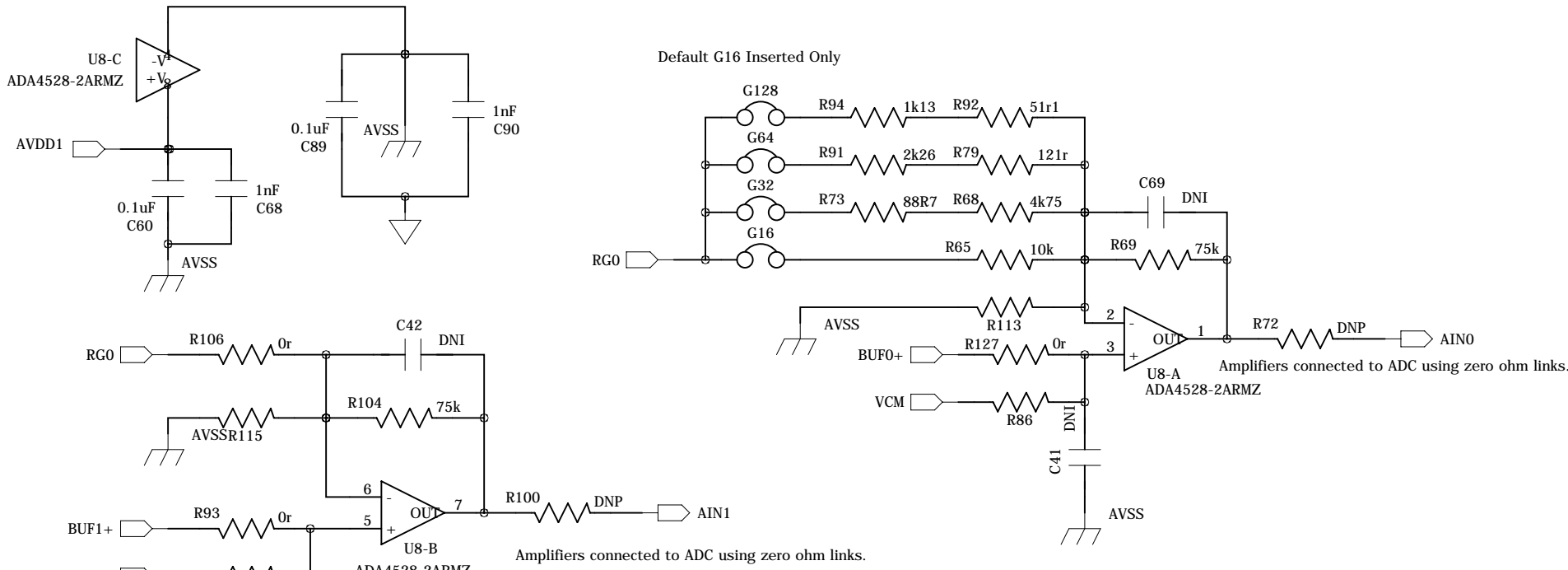
4

3

2

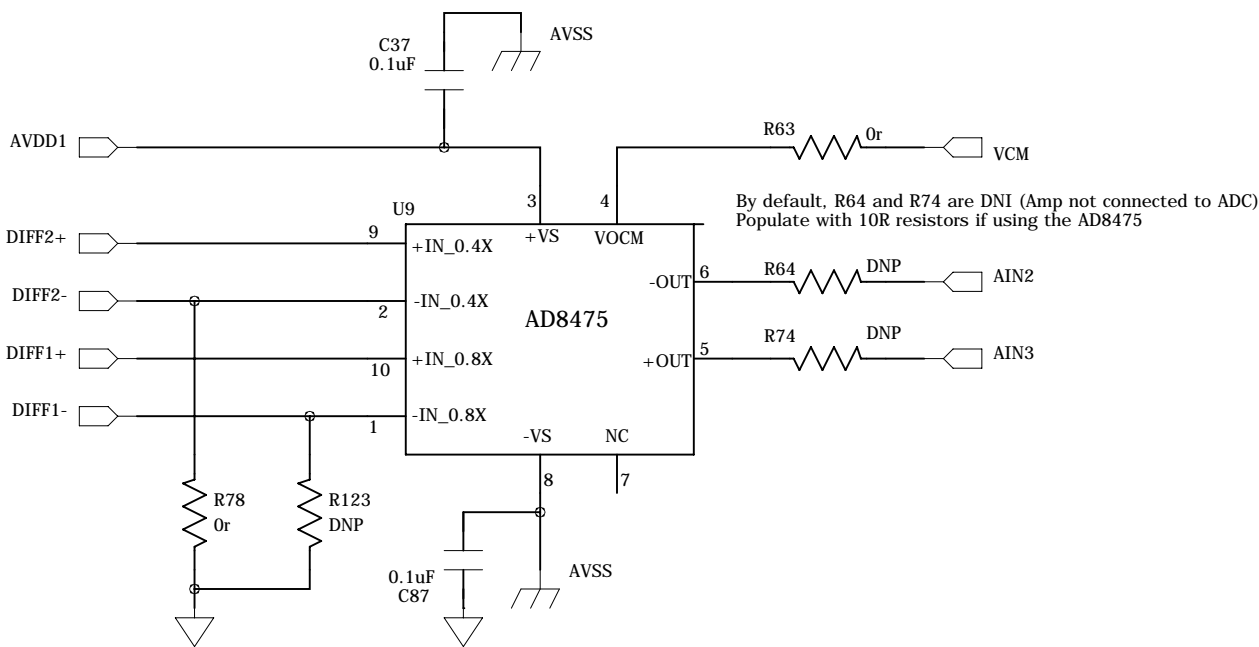
1

REVISION RECORD			
LTR	ECO NO:	APPROVED:	DATE:



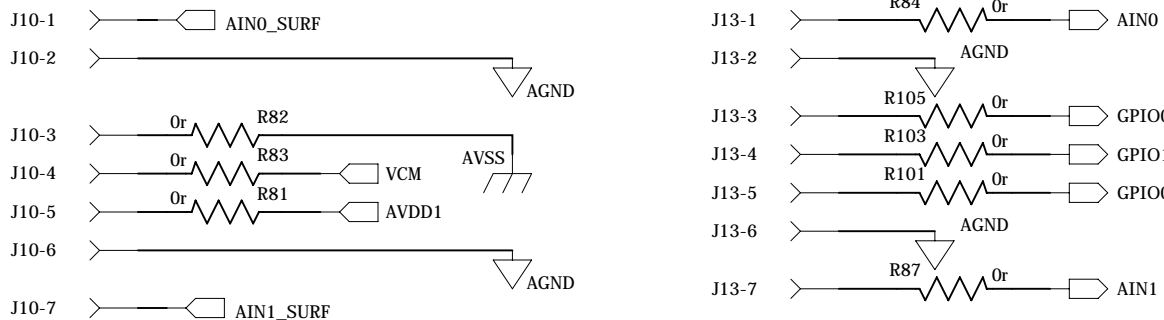
Selectable Gain InAmp 1st Stage

Reconfigurable Input Stage



Attenuating Single Ended to Differential Driver

OPTIONAL HEADER CONNECTOR

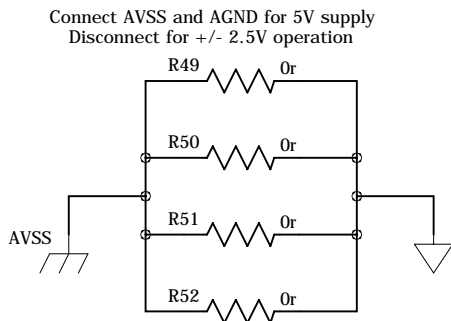
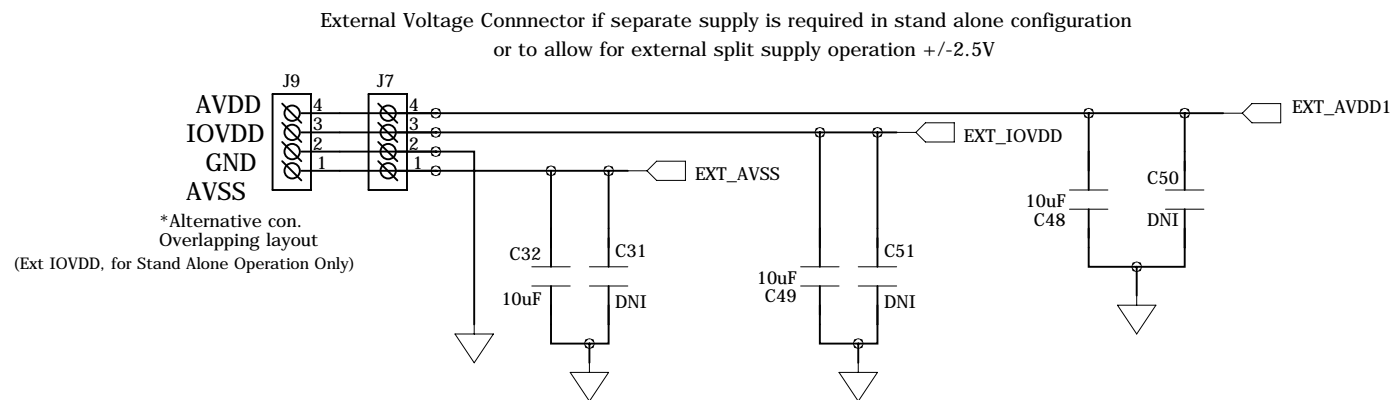
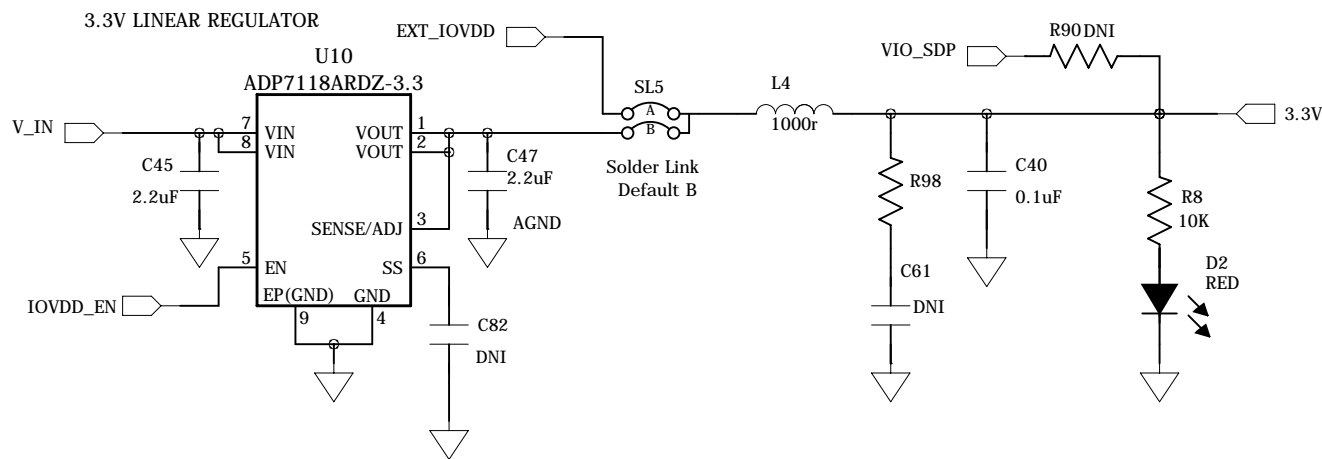
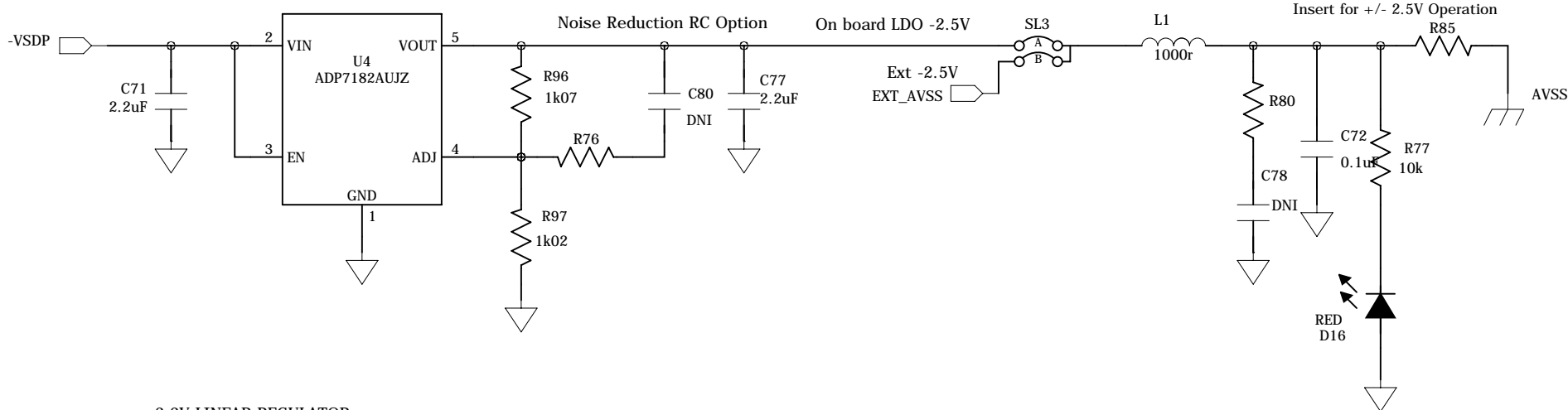
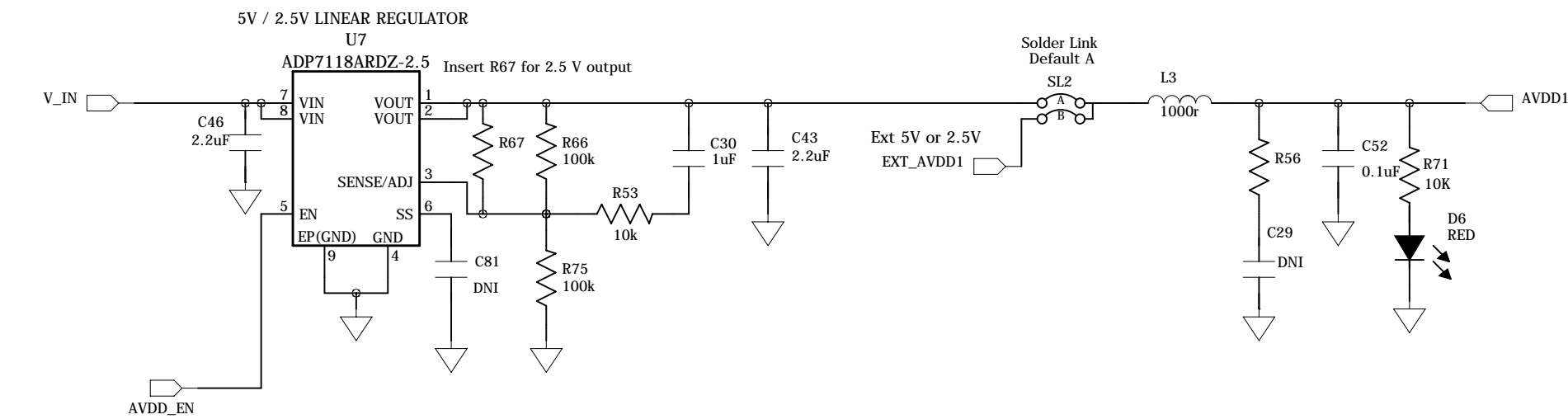


COMPANY: Analog Devices International				
TITLE: EVAL-AD717x-2SDZ				
DRAWN: Pat Sheahan	DATED: 3-Sept 2014	CODE:	SIZE: A2	DRAWING NO: 02-039441
CHECKED: Rob Kiely	DATED: 3-Sept 2014	QUALITY CONTROL: <QC Date>	REV: E	
RELEASED: <Release Date>	DATED: <Release Date>	SCALE: N/A	SHEET: 2 of 5	



REVISION RECORD			
LTR	ECO NO:	APPROVED:	DATE:

5V, 3.3V & +/- 2.5V Regulators



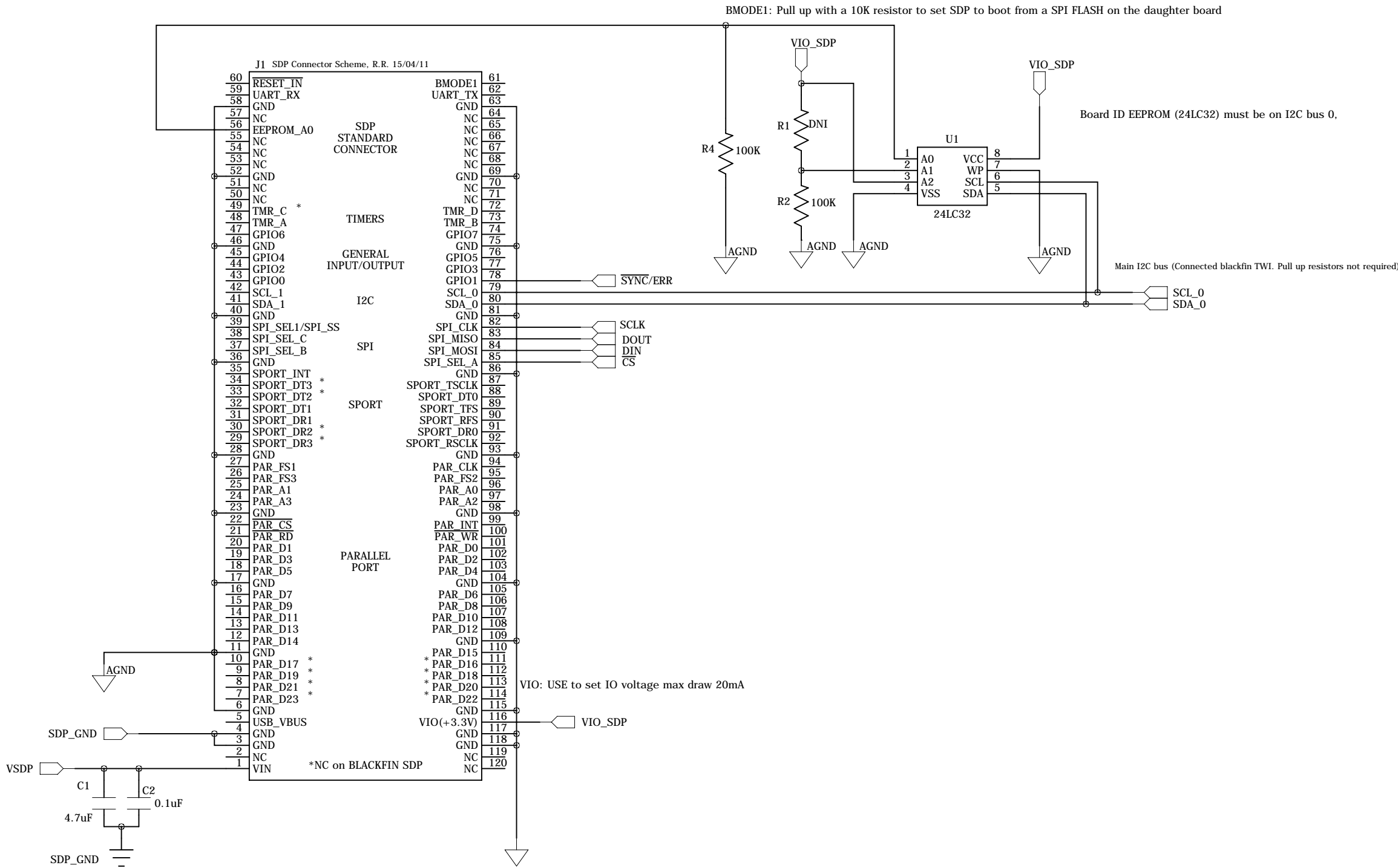
COMPANY: Analog Devices International				
TITLE: EVAL-AD717x-2SDZ				
CODE:	SIZE: A2	DRAWING NO: 02-039441		REV: E
SCALE: N/A		SHEET: 4 of 5		

DRAWN: Pat Sheahan	DATED: 3-Sept 2014
CHECKED: Rob Kiely	DATED: 3-Sept 2014
QUALITY CONTROL: <QC By>	DATED: <QC Date>
RELEASED: <Released By>	DATED: <Release Date>

REVISION RECORD			
LTR	ECO NO:	APPROVED:	DATE:

SDP CONNECTOR      EEPROM-SW/USB ID

VIO: USE to set IO voltage max draw 20mA  
VIN: Use this pin to power the SDP requires 4-7V 200mA  
BMODE1: Pull up with a 10K resistor to set SDP to boot from a SPI FLASH on the daughter board



VIN: Use this pin to power the SDP requires 5V 200mA  
I2C bus 1 is common across both connectors on SDP - Pull up resistors required (connected to blackfin GPIO - use I2C\_0 first)

COMPANY: Analog Devices International

TITLE: EVAL-AD717x-2SDZ

DRAWN: Pat Sheahan	DATED: 3-Sept 2014
CHECKED: Rob Kiely	DATED: 3-Sept 2014
QUALITY CONTROL: <QC By>	DATED: <QC Date>
RELEASED: <Released By>	DATED: <Release Date>

CODE:	SIZE:	DRAWING NO:	REV:
	A2	02-039441	E
SCALE: N/A			SHEET: 5of 5