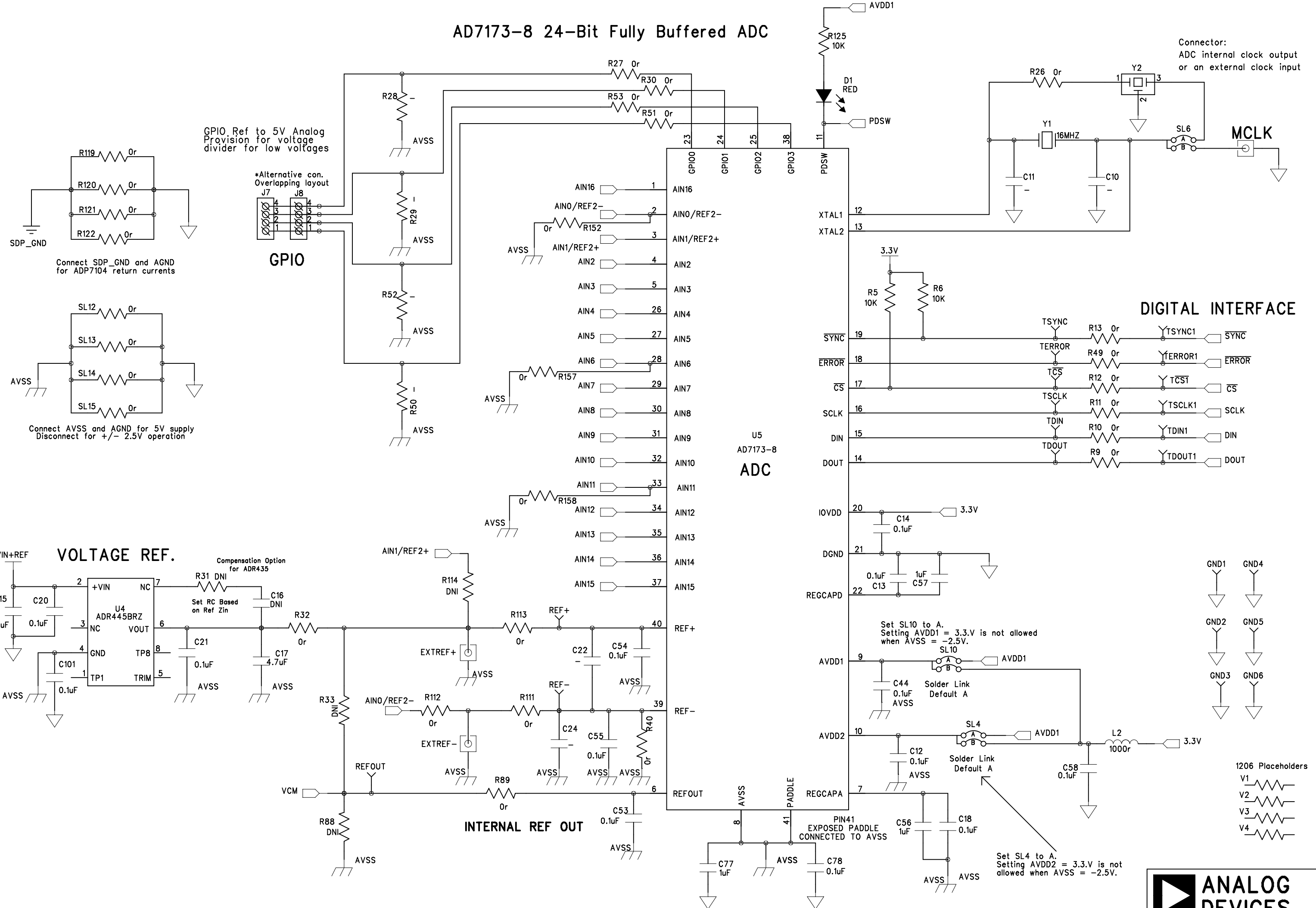
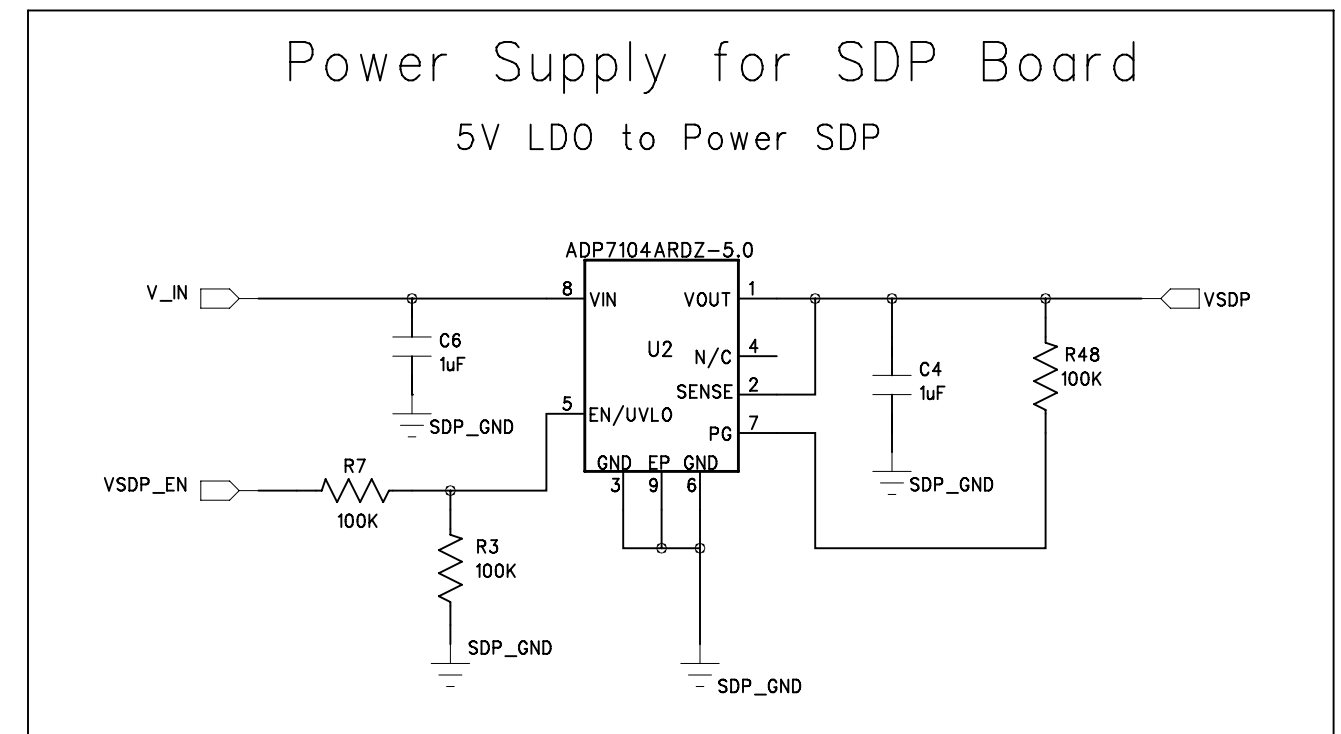
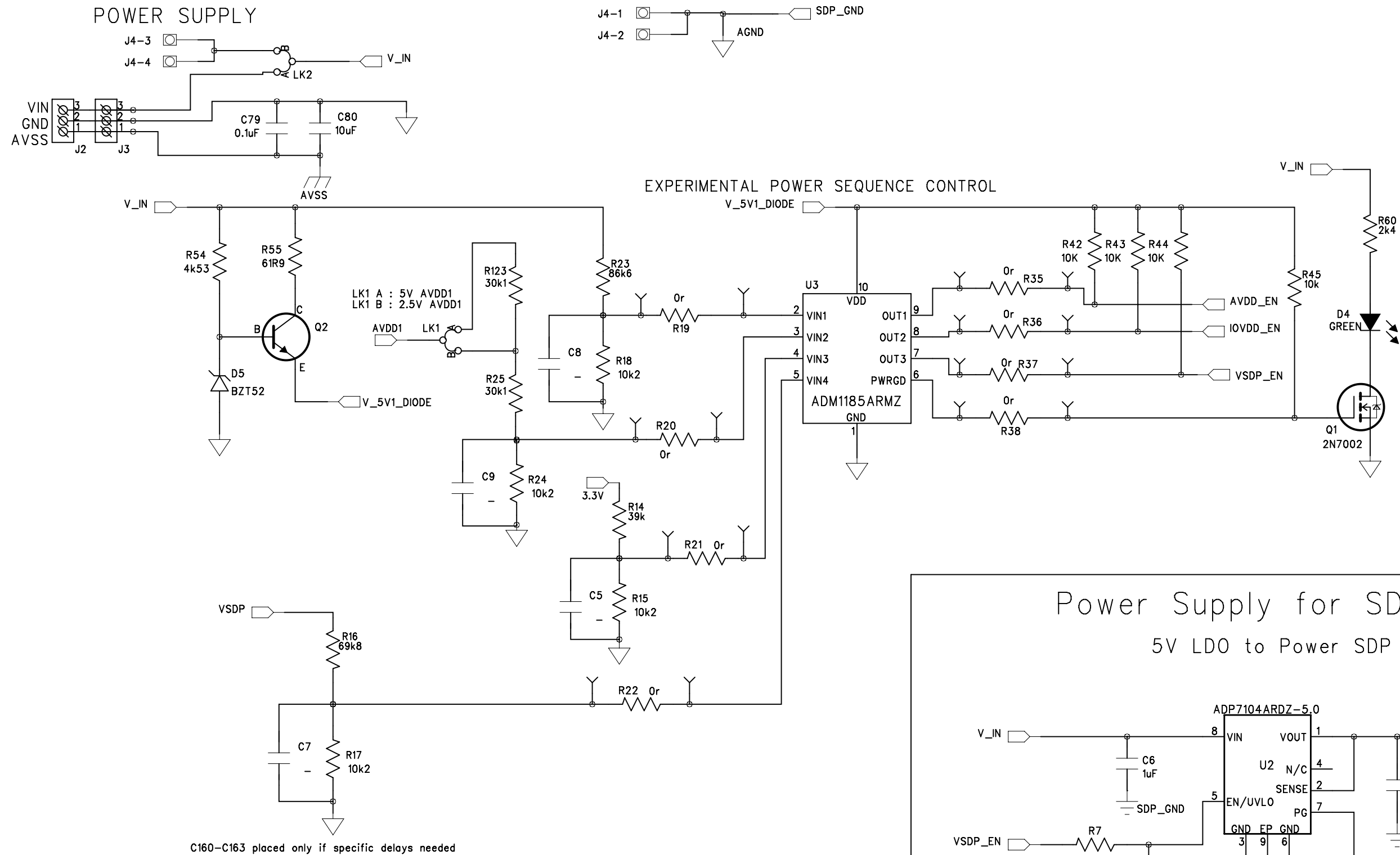


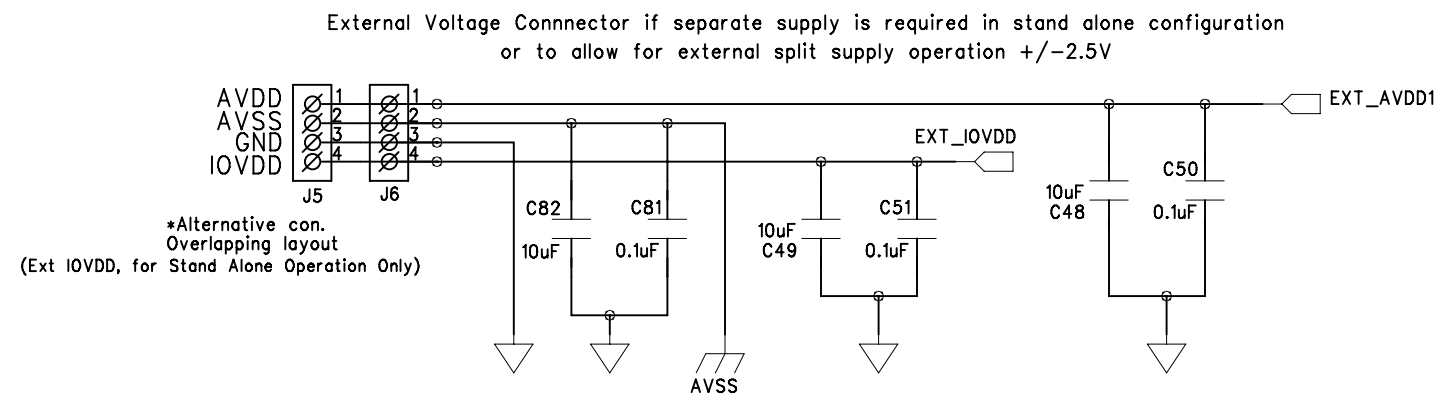
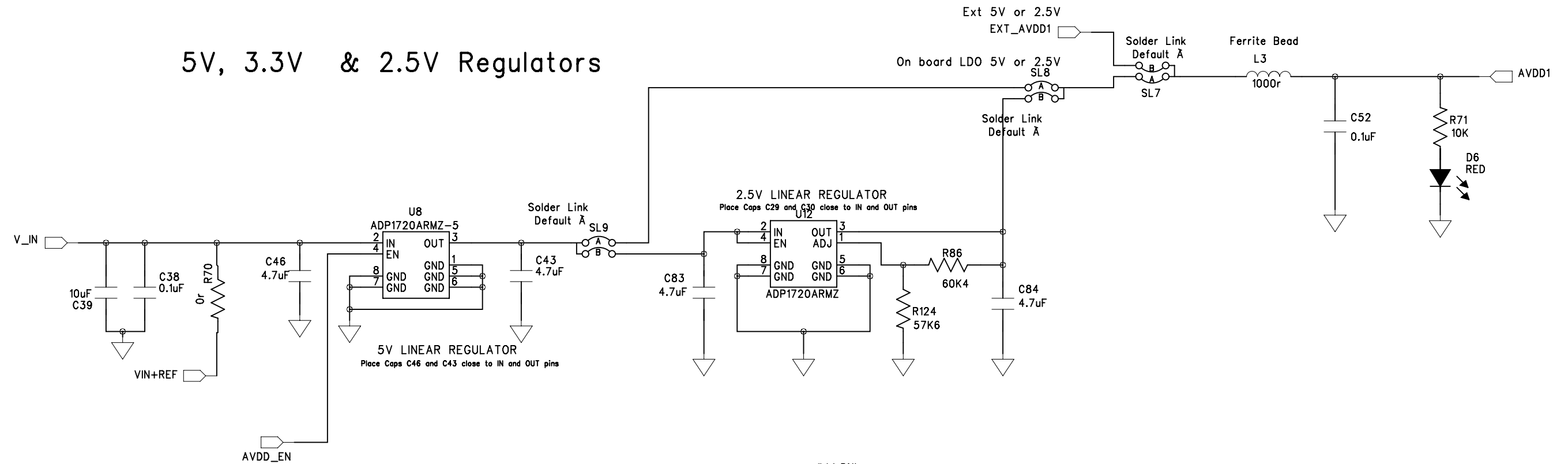
AD7173-8 24-Bit Fully Buffered ADC



Ground Star point. Place near to V_in jack plug J11



5V, 3.3V & 2.5V Regulators

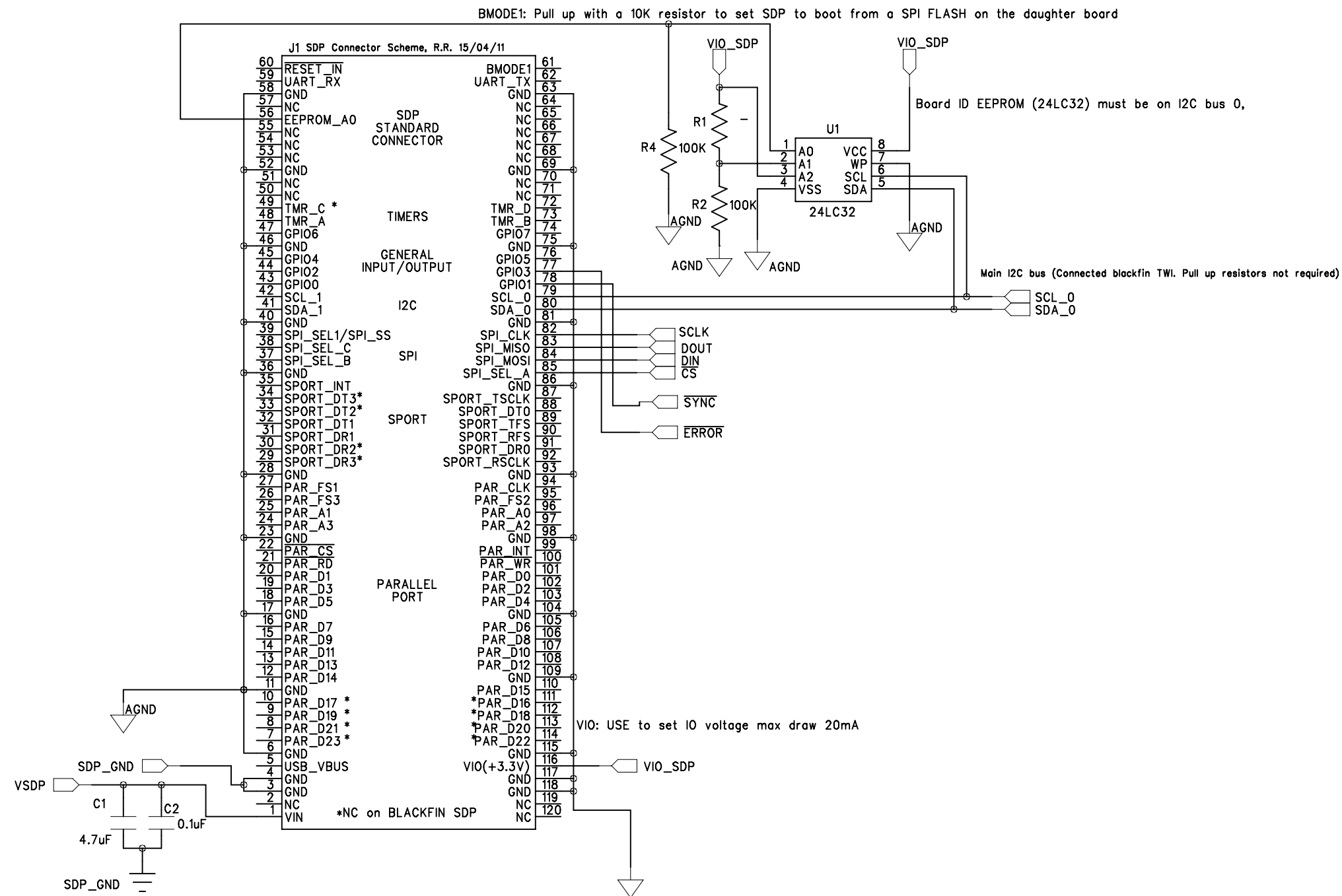


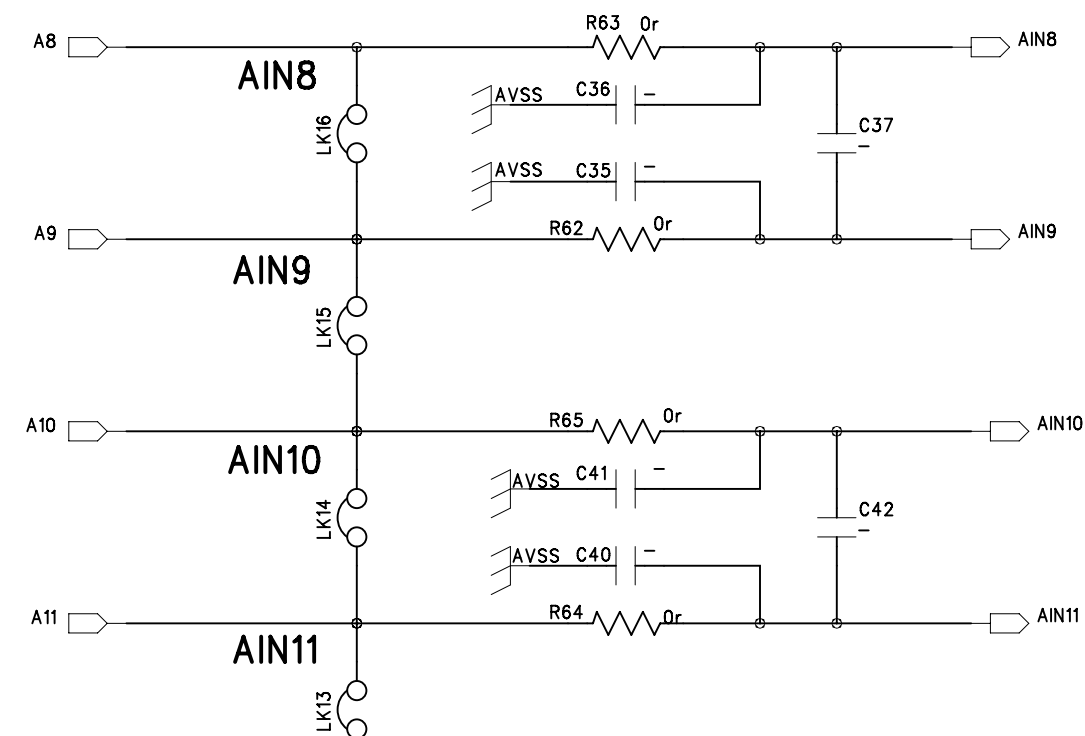
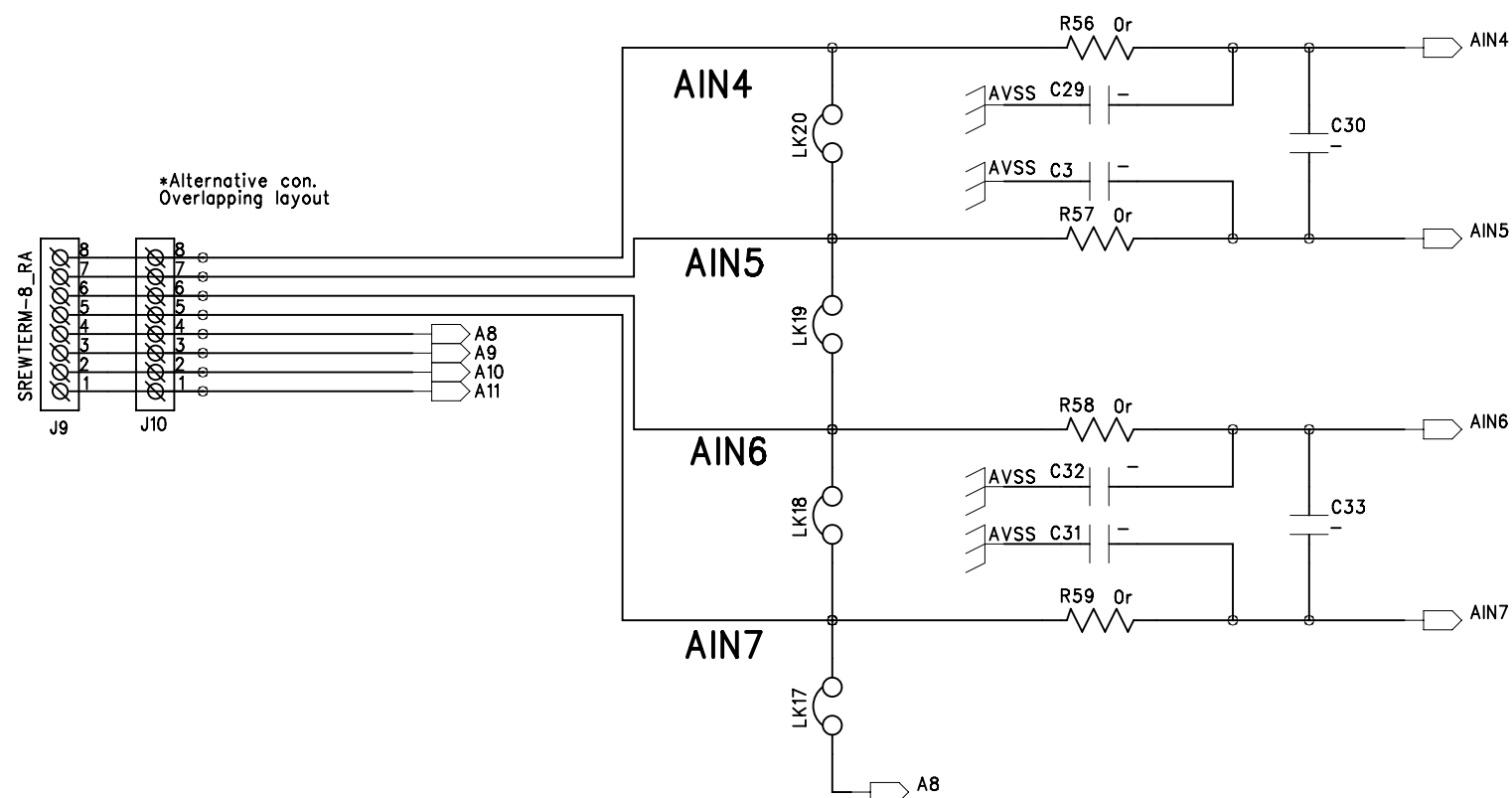
SDP CONNECTOR EEPROM-SW/USB ID

VIO: USE to set IO voltage max draw 20mA

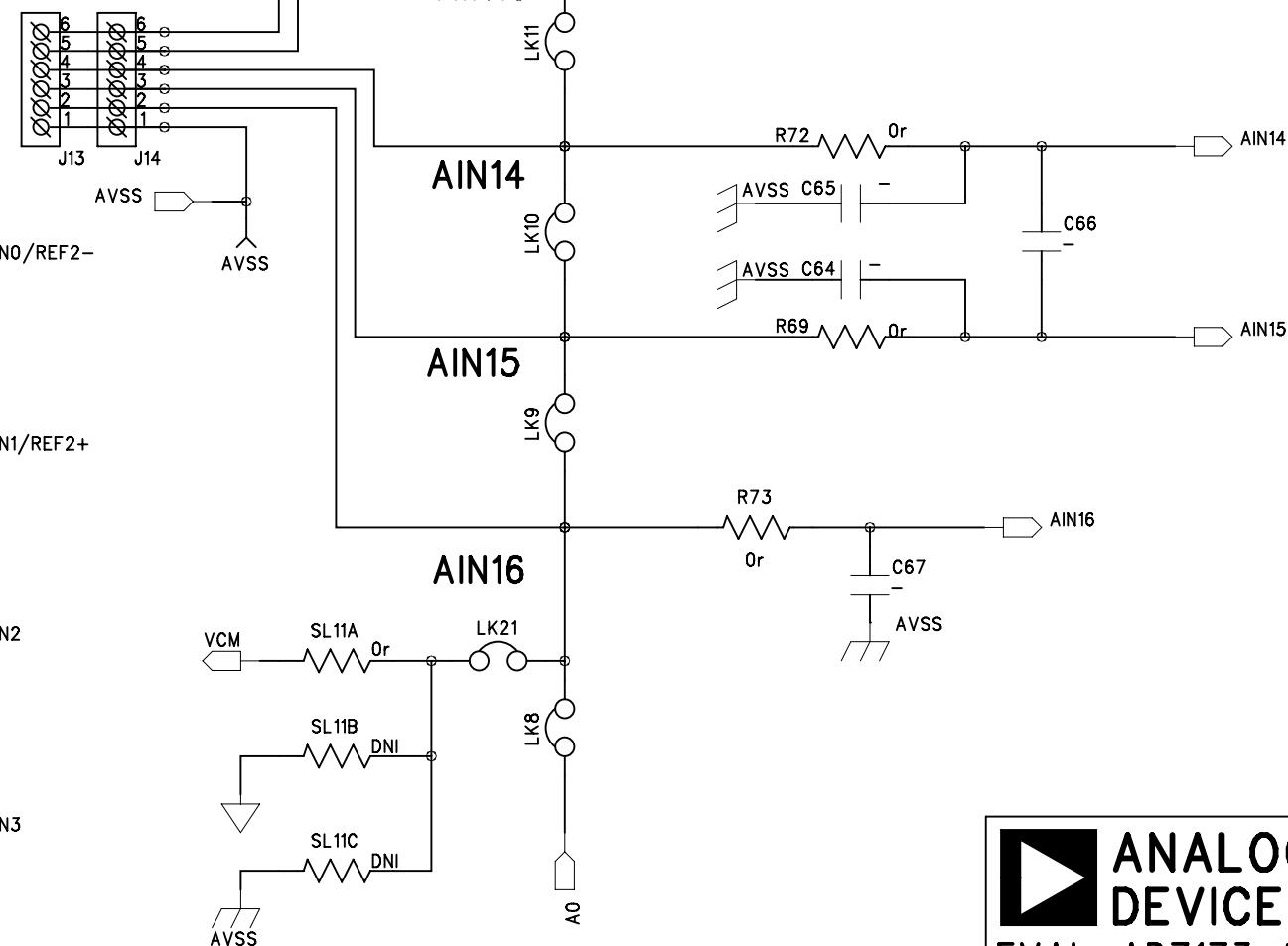
VIN: Use this pin to power the SDP requires 4-7V 200mA

BMODE1: Pull up with a 10K resistor to set SDP to boot from a SPI FLASH on the daughter board

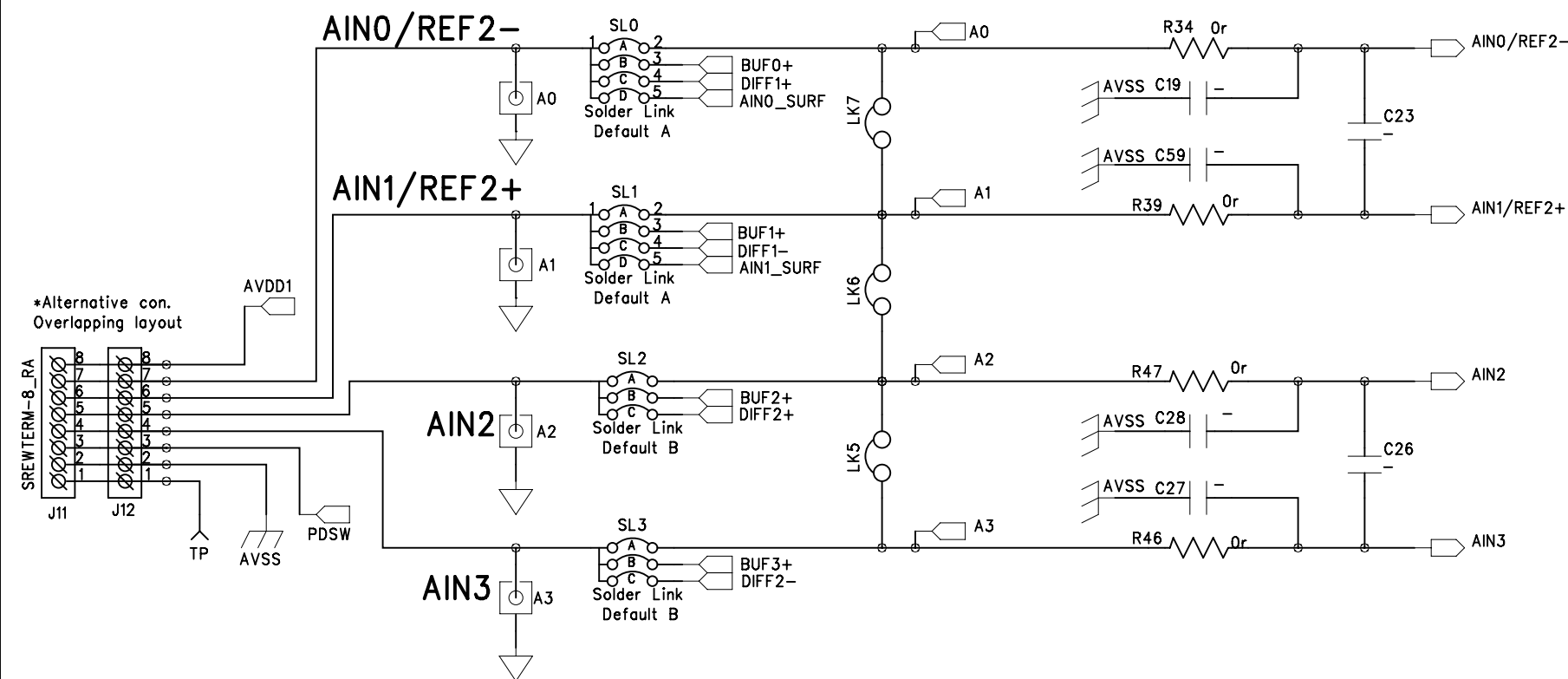




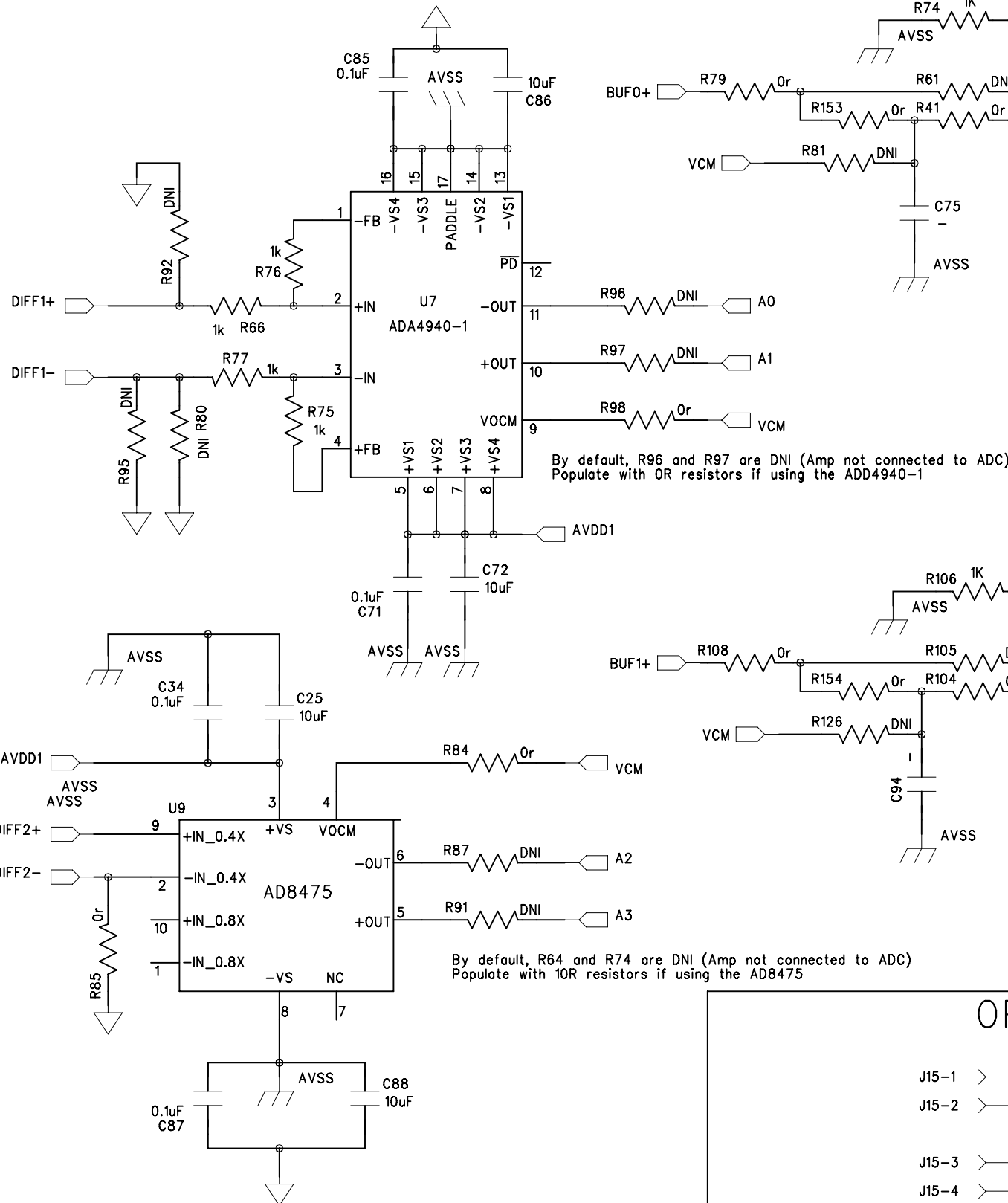
*Alternative con. Overlapping layout



Set Distance between A0 & A1 to that required by standard amplifier evaluation boards
Set Distance between A2 & A3 to that required by standard amplifier evaluation boards



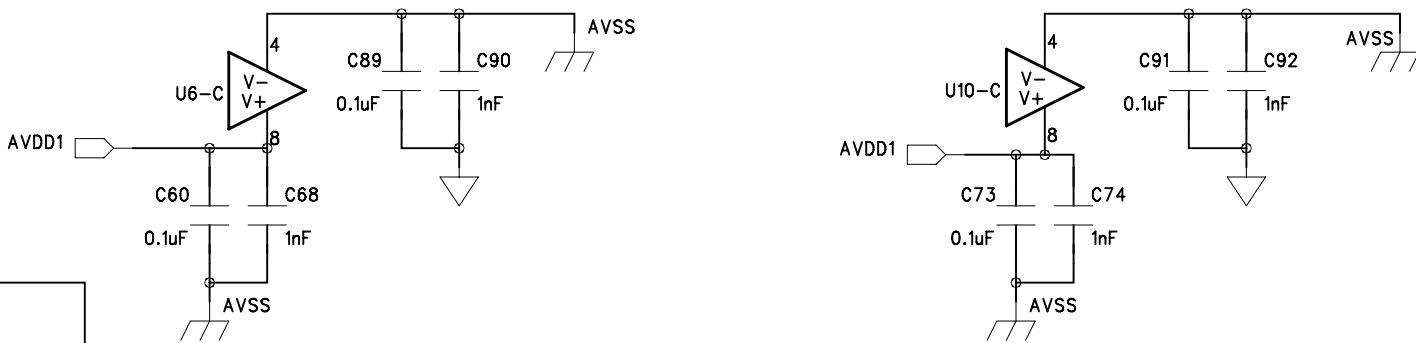
Single Ended to Diff ADC Driver Options



Attenuating Single Ended to Differential Driver

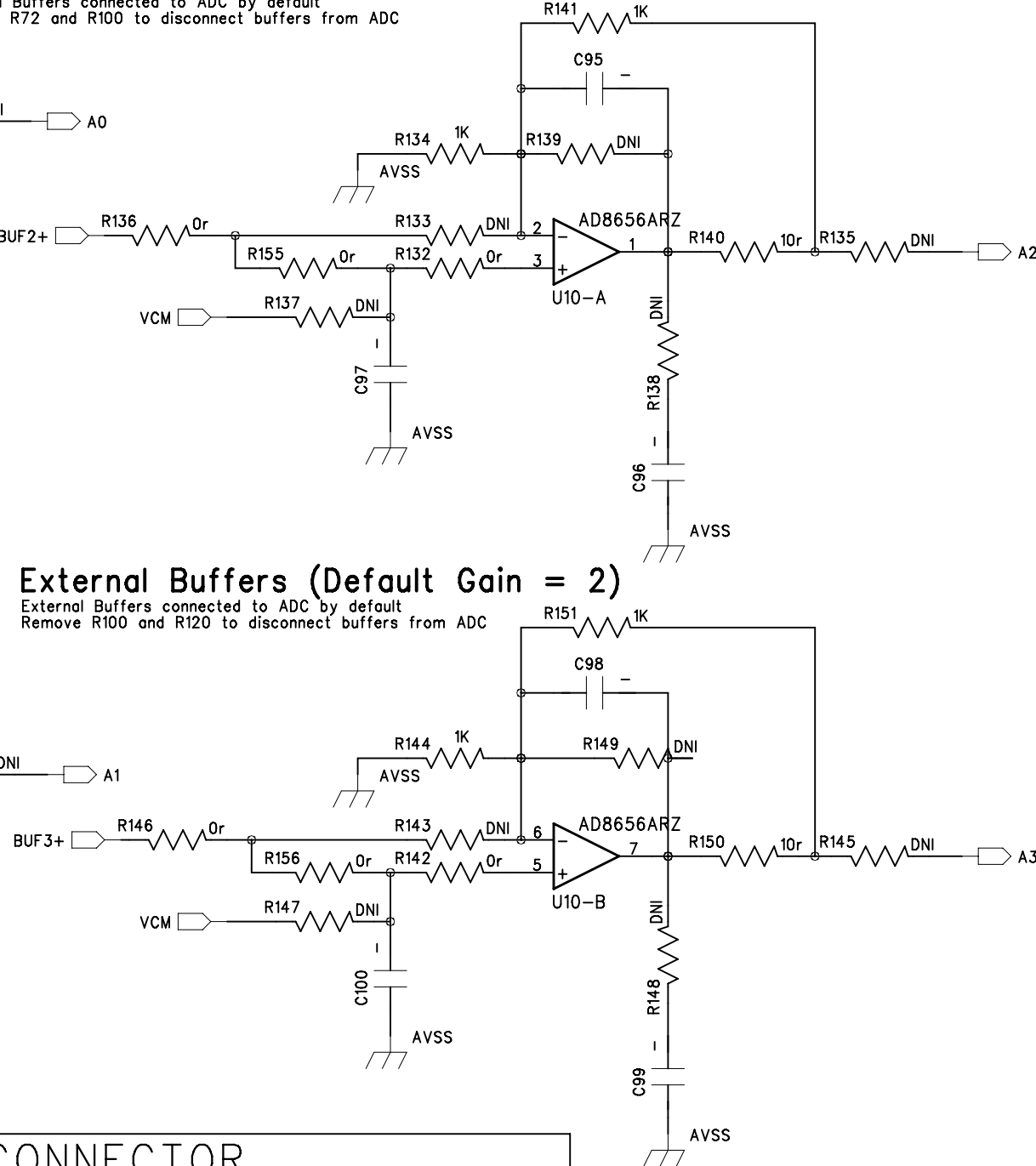
External Buffers (Default Gain = 2)

External Buffers connected to ADC by default
Remove R72 and R100 to disconnect buffers from ADC



External Buffers (Default Gain = 2)

External Buffers connected to ADC by default
Remove R100 and R120 to disconnect buffers from ADC



OPTIONAL HEADER CONNECTOR

