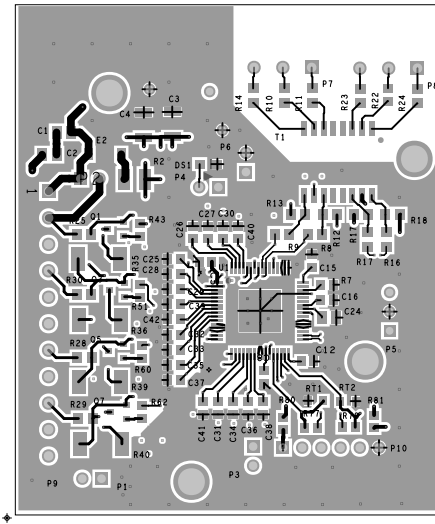
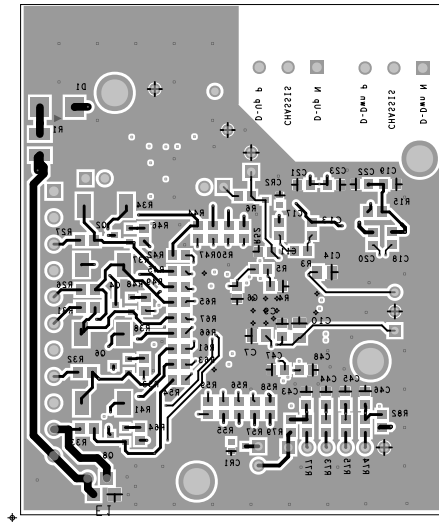


ART FILM - TOP



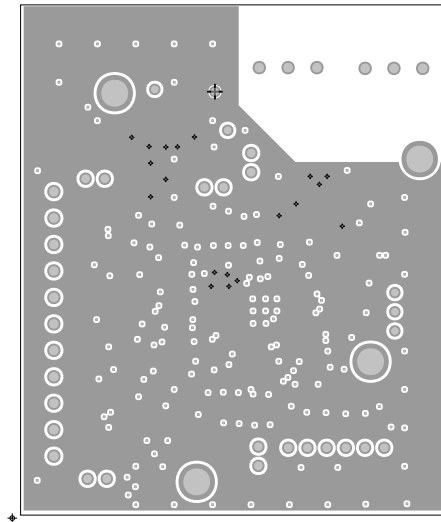
ART FILM - TOP

ART FILM - BOTTOM



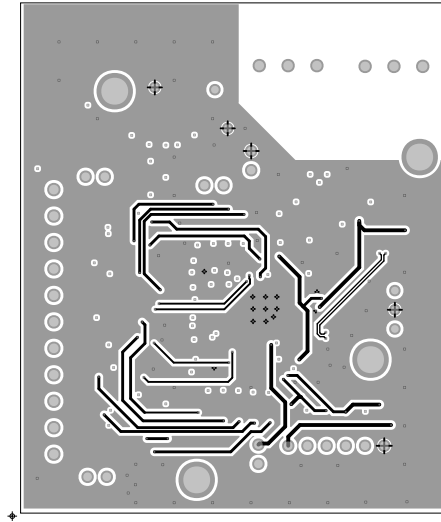
ART FILM - BOTTOM

ART FILM - Inner_1



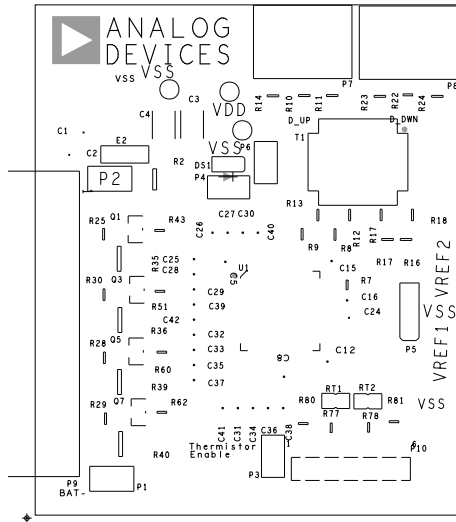
ART FILM - Inner_1

ART FILM - Inner_2



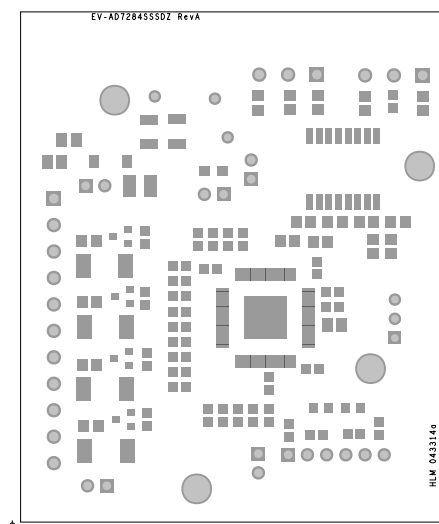
ART FILM - Inner_2

ART FILM - silkscreen_top



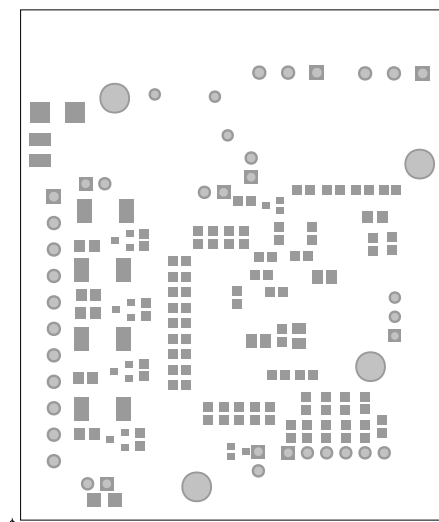
ART FILM - silkscreen_top

ART FILM - soldermask_top



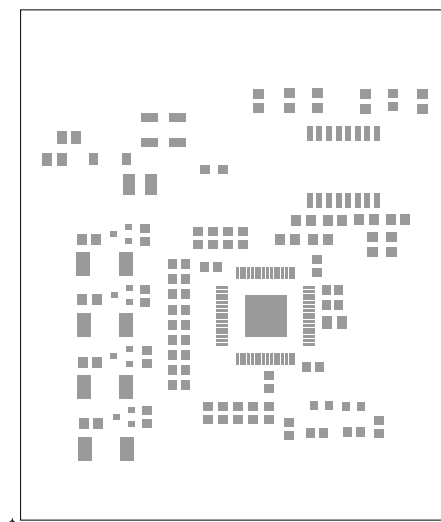
ART FILM - soldermask_top

ART FILM - soldermask_bottom



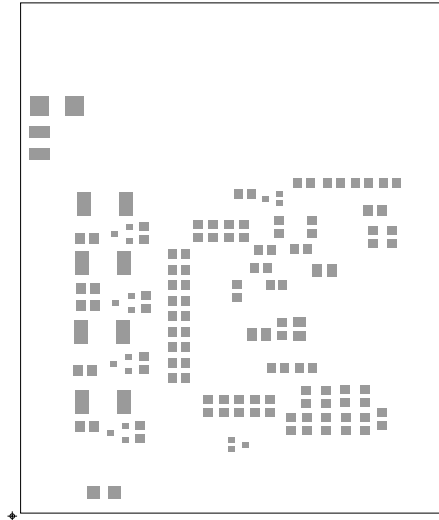
ART FILM - soldermask_bottom

ART FILM - Pastemask_top



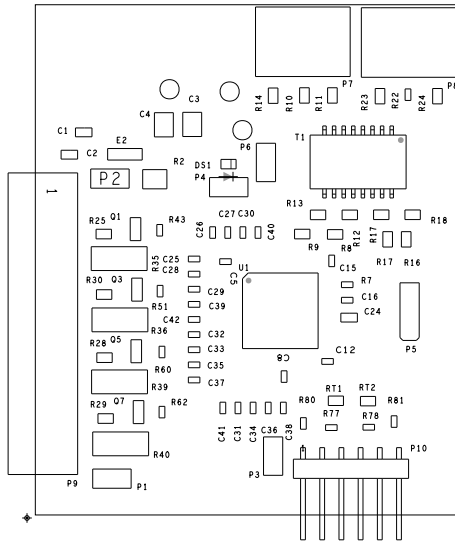
ART FILM - Pastemask_top

ART FILM - Pastemask_Bottom



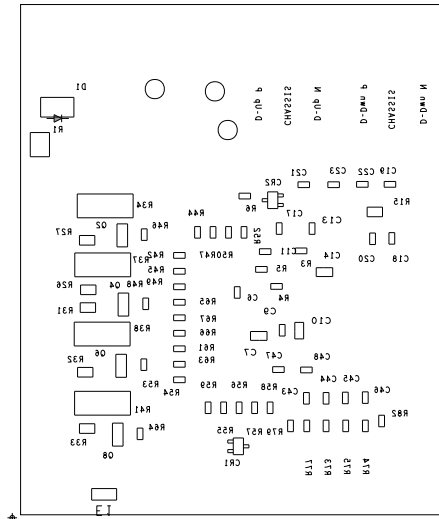
ART FILM - Pastemask_Bottom

ART FILM - assembly_top



ART FILM - assembly_top

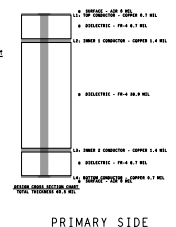
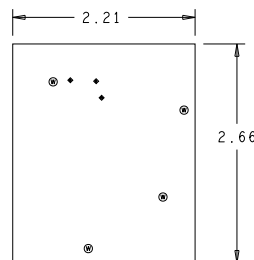
ART FILM - assembly_bottom



ART FILM - assembly_bottom

8 | 7 | 6 | 5 | 4 | 3 | 2 | 1

FINISHED HOLES IN MILS			
ALL UNITS ARE IN MILS			
FIGURE	SIZE	PLATED	QTY
+	10.0	PLATED	1185
+	12.0	PLATED	239
◆	40.0	PLATED	66
◇	45.0	PLATED	2
○	45.0	PLATED	14
◆	50.0	PLATED	6
◆	55.0	PLATED	25
A	28.0	NON-PLATED	1
	43.0	NON-PLATED	1
⊙	63.0	NON-PLATED	1
⊙	71.0	NON-PLATED	1
T	125.0	NON-PLATED	2
⊙	140.0	NON-PLATED	8
A	177.0	NON-PLATED	4



- REVISIONS
- | REV | DESCRIPTION | DATE | APPROVED |
|-----|-----------------|------|----------|
| A | INITIAL RELEASE | | |
- REVISIONS:
- REFER TO SPEC SHEET (LAYER REV.), CLASS 8 FOR FABRICATION UNLESS OTHERWISE SPECIFIED.
 - INCOMPATIBILITY FOR ANALOG DEVICES, INC. SPECIFICATION TERMINAL. (LAYER REVISION.)
 - INCOMPATIBILITY TO THE DESIGN AND NOT ALLOWED WITHOUT WRITTEN APPROVAL.
 - HOLE PATTERN TOLERANCES FOR UNDESIGNED HOLES SHALL BE A DIAMETER OF 8.00 DIMS FROM THEIR TRUE POSITION.
 - PLATED HOLES SHALL TOLERANCE SHALL NOT BE LESS THAN 0.001 DIA. DESIGN INTENT, WITH NO HOLE DEPTH FROM THEIR TRUE POSITION BY DESIGN INTENT.
 - HOLE DIMENSIONS SHALL BE PLATED.
 - FREESTANDING CONNECTOR PINS SHALL NOT BE EXPOSED FROM THE BOARD CONNECTED ON THE MATED BOARD, BY MORE THAN THE CONNECTOR TOLERANCE.
 - FORMER DESIGN SPEC TO 1.00 DIA.
 - FORMER DESIGN SPEC TO 1.00 DIA.
 - NON-FUNCTIONAL PAD DESIGN FROM DESIGN LAYER NOT BE PERFORMED AFTER CUSTOMER APPROVAL.
 - IF PAD DESIGN PROVISIONS ARE NOT LAYER PROVISIONS TO BEADDED FROM REVISIONS, SPEC. MAY REQUEST APPROVAL TO THE BOARD FROM TO PROTECT SIGNALS FROM. (SEE PAD TO TRACE INFORMATION ONLY AND ELECTRICAL INTERFERENCE MUST BE MINIMIZED.)
 - TOLERANCE MAY BE ADDED TO COMPENSATE FOR LEAD COPPER VARIATION. (SEE DESIGN INTENT ONLY AFTER REVIEW AND APPROVAL FROM THE CUSTOMER.)
 - TOLERANCE TO GIVE SOME. (FUNCTIONAL, NON-PLATED THROUGH HOLE). ALL HOLE PROVISIONS TO BE 0.00 DIA. DESIGN.
 - HOLE SHALL BE IN TOLERANCE TO ANY AREA FROM OF BOARD. (SEE DESIGN INTENT ONLY AFTER REVIEW AND APPROVAL FROM THE CUSTOMER.)
 - IF PAD DESIGN PROVISIONS ARE NOT LAYER PROVISIONS TO BEADDED FROM REVISIONS, SPEC. MAY REQUEST APPROVAL TO THE BOARD FROM TO PROTECT SIGNALS FROM. (SEE PAD TO TRACE INFORMATION ONLY AND ELECTRICAL INTERFERENCE MUST BE MINIMIZED.)
 - TOLERANCE MAY BE ADDED TO COMPENSATE FOR LEAD COPPER VARIATION. (SEE DESIGN INTENT ONLY AFTER REVIEW AND APPROVAL FROM THE CUSTOMER.)
 - TOLERANCE TO GIVE SOME. (FUNCTIONAL, NON-PLATED THROUGH HOLE). ALL HOLE PROVISIONS TO BE 0.00 DIA. DESIGN.
 - HOLE SHALL BE IN TOLERANCE TO ANY AREA FROM OF BOARD. (SEE DESIGN INTENT ONLY AFTER REVIEW AND APPROVAL FROM THE CUSTOMER.)
 - IF PAD DESIGN PROVISIONS ARE NOT LAYER PROVISIONS TO BEADDED FROM REVISIONS, SPEC. MAY REQUEST APPROVAL TO THE BOARD FROM TO PROTECT SIGNALS FROM. (SEE PAD TO TRACE INFORMATION ONLY AND ELECTRICAL INTERFERENCE MUST BE MINIMIZED.)
 - TOLERANCE MAY BE ADDED TO COMPENSATE FOR LEAD COPPER VARIATION. (SEE DESIGN INTENT ONLY AFTER REVIEW AND APPROVAL FROM THE CUSTOMER.)
 - TOLERANCE TO GIVE SOME. (FUNCTIONAL, NON-PLATED THROUGH HOLE). ALL HOLE PROVISIONS TO BE 0.00 DIA. DESIGN.
 - HOLE SHALL BE IN TOLERANCE TO ANY AREA FROM OF BOARD. (SEE DESIGN INTENT ONLY AFTER REVIEW AND APPROVAL FROM THE CUSTOMER.)

ASSEMBLY		ANALOG DEVICES	
DATE	APPROVAL	DATE	TITLE
2024-01-15	[Signature]	2024-01-15	AD7284 Transformer Isolated Slave
DESIGNER		DRAWING NUMBER	
CHECKED		01-043314	
SCALE		2/1	
SHEET 1 OF 1		REV A	