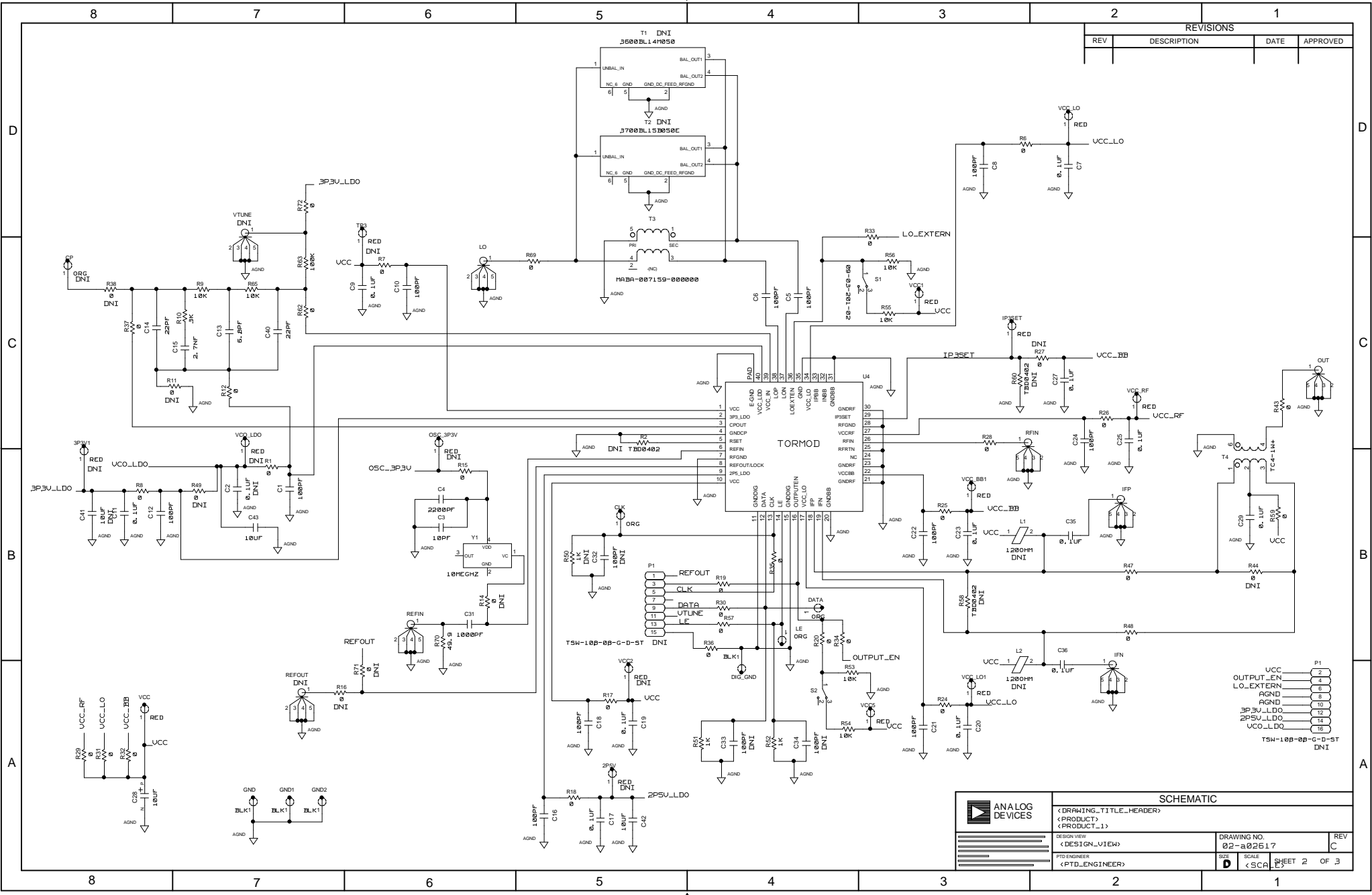


8	7	6	5	4	3	2	1																																									
THIS DRAWING IS THE PROPERTY OF ANALOG DEVICES INC. IT IS NOT TO BE REPRODUCED OR COPIED, IN WHOLE OR IN PART, OR USED IN FURNISHING INFORMATION TO OTHERS, OR FOR ANY OTHER PURPOSE DETRIMENTAL TO THE INTERESTS OF ANALOG DEVICES. THE EQUIPMENT SHOWN HEREON MAY BE PROTECTED BY PATENTS OWNED OR CONTROLLED BY ANALOG DEVICES.		<table border="1" style="margin:auto;"> <tr><th colspan="3">JUMPER TABLE</th></tr> <tr><th>JP#</th><th>ON</th><th>OFF</th></tr> <tr><td>1</td><td></td><td></td></tr> <tr><td>2</td><td></td><td></td></tr> <tr><td>3</td><td></td><td></td></tr> <tr><td>4</td><td></td><td></td></tr> <tr><td>5</td><td></td><td></td></tr> </table> <p style="font-size: 8px; text-align:center;">* SEE ASSEMBLY INSTRUCTIONS</p>			JUMPER TABLE			JP#	ON	OFF	1			2			3			4			5			<table border="1" style="font-size: 8px;"> <tr><th colspan="4">REVISIONS</th></tr> <tr><th>REV</th><th>DESCRIPTION</th><th>DATE</th><th>APPROVED</th></tr> <tr><td>A</td><td>INITIAL RELEASE</td><td>12/10</td><td>S. R.</td></tr> <tr><td>B</td><td>ECN PER WO# ALP2617B</td><td>03/11</td><td>S. R.</td></tr> <tr><td>C</td><td>ECN PER WO# ALP2617C</td><td>08/11</td><td>S. R.</td></tr> </table>			REVISIONS				REV	DESCRIPTION	DATE	APPROVED	A	INITIAL RELEASE	12/10	S. R.	B	ECN PER WO# ALP2617B	03/11	S. R.	C	ECN PER WO# ALP2617C	08/11	S. R.
JUMPER TABLE																																																
JP#	ON	OFF																																														
1																																																
2																																																
3																																																
4																																																
5																																																
REVISIONS																																																
REV	DESCRIPTION	DATE	APPROVED																																													
A	INITIAL RELEASE	12/10	S. R.																																													
B	ECN PER WO# ALP2617B	03/11	S. R.																																													
C	ECN PER WO# ALP2617C	08/11	S. R.																																													
D	RELAY CONTROL CHART							D																																								
	CONTROL	CODE	DEVICE	FUNCTION	CONNECTOR																																											
C								C																																								
B								B																																								
A								A																																								
P.O SPEC.	BK/BD SPEC.	SOCKET OEM	OEM PART#	HANDLER																																												
8	7	6	5	4	3	2	1																																									

TEMPLATE ENGINEER --	DATE	SCHEMATIC			
HARDWARE SERVICES --		<p style="font-size: 12px; margin: 0;">TORMOD</p> <p style="font-size: 12px; margin: 0;">EVAL BOARD Z</p>			
HARDWARE SYSTEMS --					
TEST ENGINEER --					
COMPONENT ENGINEER --					
TEST PROCESS --					
HARDWARE RELEASE --					
DESIGNER --					
PTD ENGINEER <PTD_ENGINEER>					
CHECKER --		<small>UNLESS OTHERWISE SPECIFIED DIMENSIONS ARE IN INCHES</small> TOLERANCES DECIMALS FRACTIONS ANGLES .XX ±0.010 ±1/32 ±2 .XXX ±0.005	MASTER PROJECT TEMPLATE TESTER TEMPLATE <DRAWING_TITLE>	DRAWING NO. 02-a02617	REV. C
		SIZE SCALE CODE ID NO. D <SCALE>	SHEET 1 OF 3		

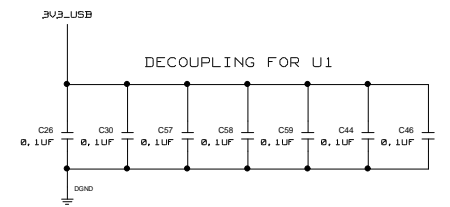
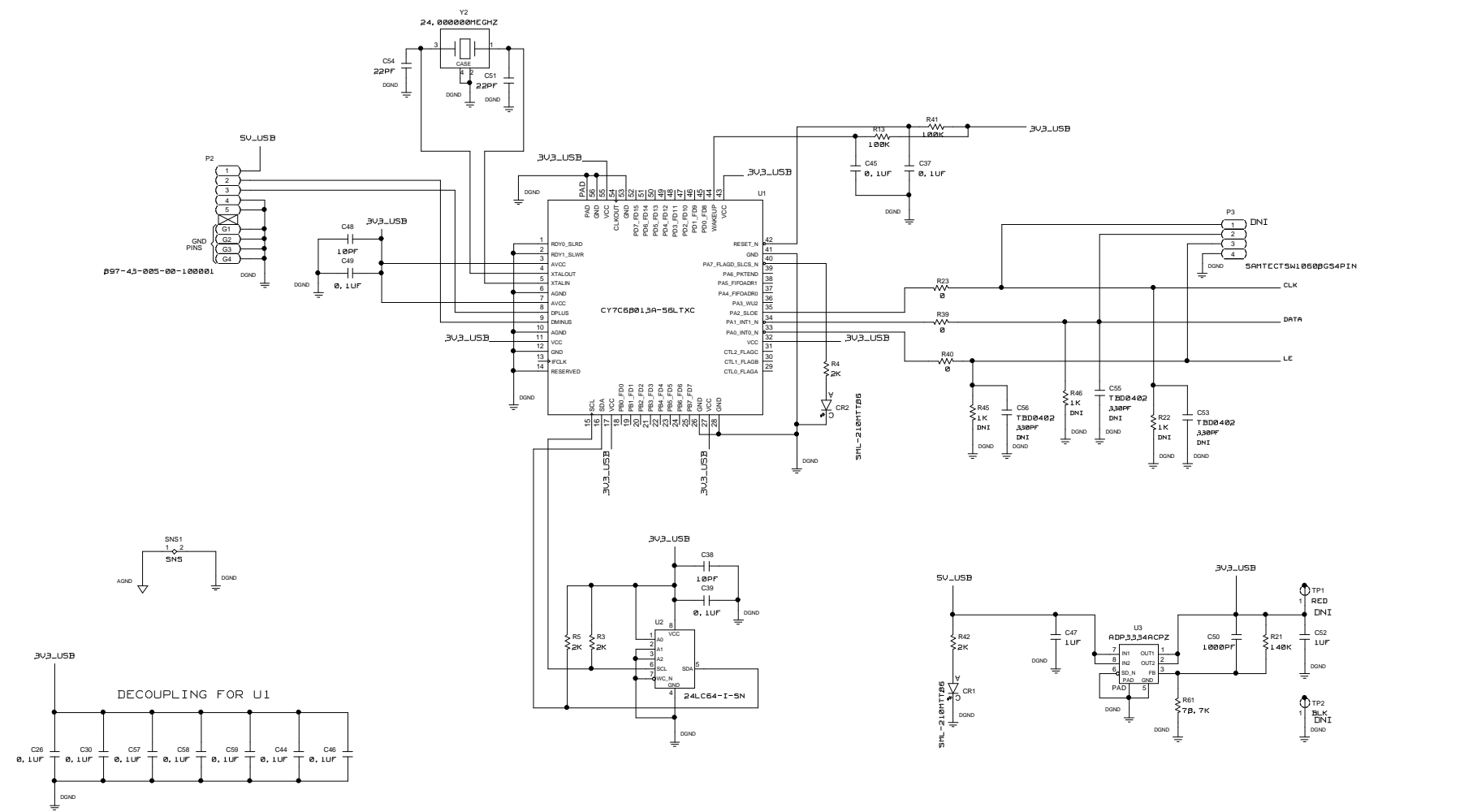


REVISIONS			
REV	DESCRIPTION	DATE	APPROVED

UCC	1
OUTPUT_EN	2
LO_EXTERN	3
AGND	4
AGND	5
3P3V_LDO	6
2P5V_LDO	7
UCC_LDO	8

	SCHEMATIC		
	<DRAWING_TITLE_HEADER> <PRODUCT> <PRODUCT_1>		
	DESIGN VIEW <DESIGN_VIEW>	DRAWING NO. 02-a02617	REV C
	PTD ENGINEER <PTD_ENGINEER>	SIZE D	SCALE X SCA

REVISIONS			
REV	DESCRIPTION	DATE	APPROVED



	SCHEMATIC	
	<DRAWING_TITLE_HEADER>	
	<PRODUCT>	
	<PRODUCT_1>	
DESIGN VIEW	<DESIGN_VIEW>	DRAWING NO. 02-a02617
PTD ENGINEER	<PTD_ENGINEER>	REV C
SIZE D	SCALE X SCA	SHEET 3 OF 3