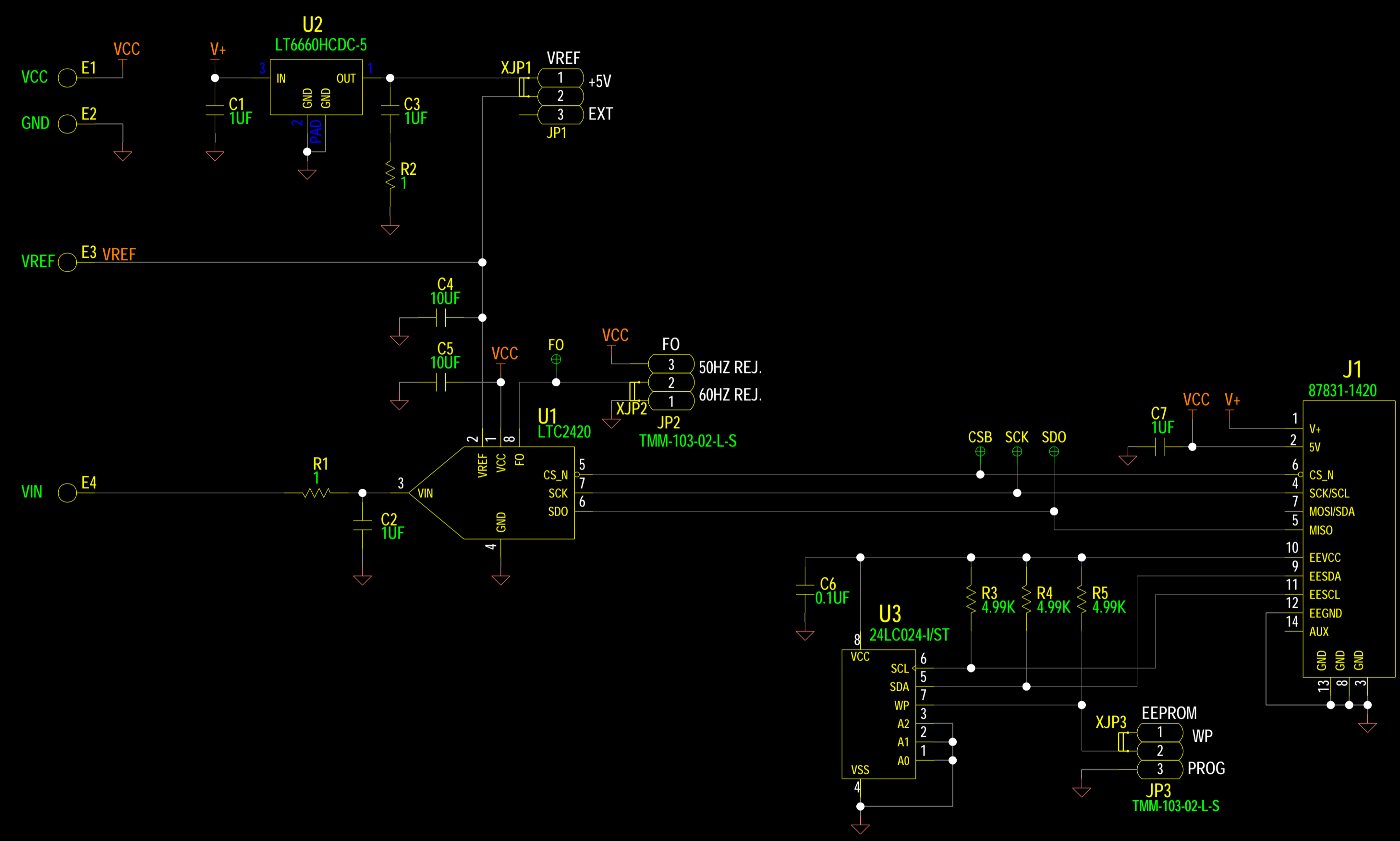
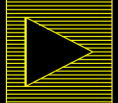


REVISIONS			
REV	DESCRIPTION	DATE	APPROVED
B	REBUILD WITH CHANGE	04-26-21	G. HOOVER



NOTES: UNLESS OTHERWISE SPECIFIED

1. ALL RESISTORS AND CAPACITORS ARE 0603.
2. INSTALL SHUNTS AS SHOWN ON JP1 AND JP2 PINS 1&2.

 ANALOG DEVICES <small>THIS DRAWING IS THE PROPERTY OF ANALOG DEVICES INC. IT IS NOT TO BE REPRODUCED OR COPIED, IN WHOLE OR IN PART, OR USED IN FURNISHING INFORMATION TO OTHERS, OR FOR ANY OTHER PURPOSE DETRIMENTAL TO THE INTERESTS OF ANALOG DEVICES. THE EQUIPMENT SHOWN HEREON MAY BE PROTECTED BY PATENTS OWNED OR CONTROLLED BY ANALOG DEVICES.</small>	SCHEMATIC			
	20-BIT DELTA SIGMA ADC WITH SPI INTERFACE			
	LTC2420CS8 EVAL-066859-B			
	DESIGN VIEW K. TRAN	DRAWING NO. 02_066859	REV B	
PTD ENGINEER G. HOOVER	SIZE C	SCALE N/A	SHEET 1 OF 1	