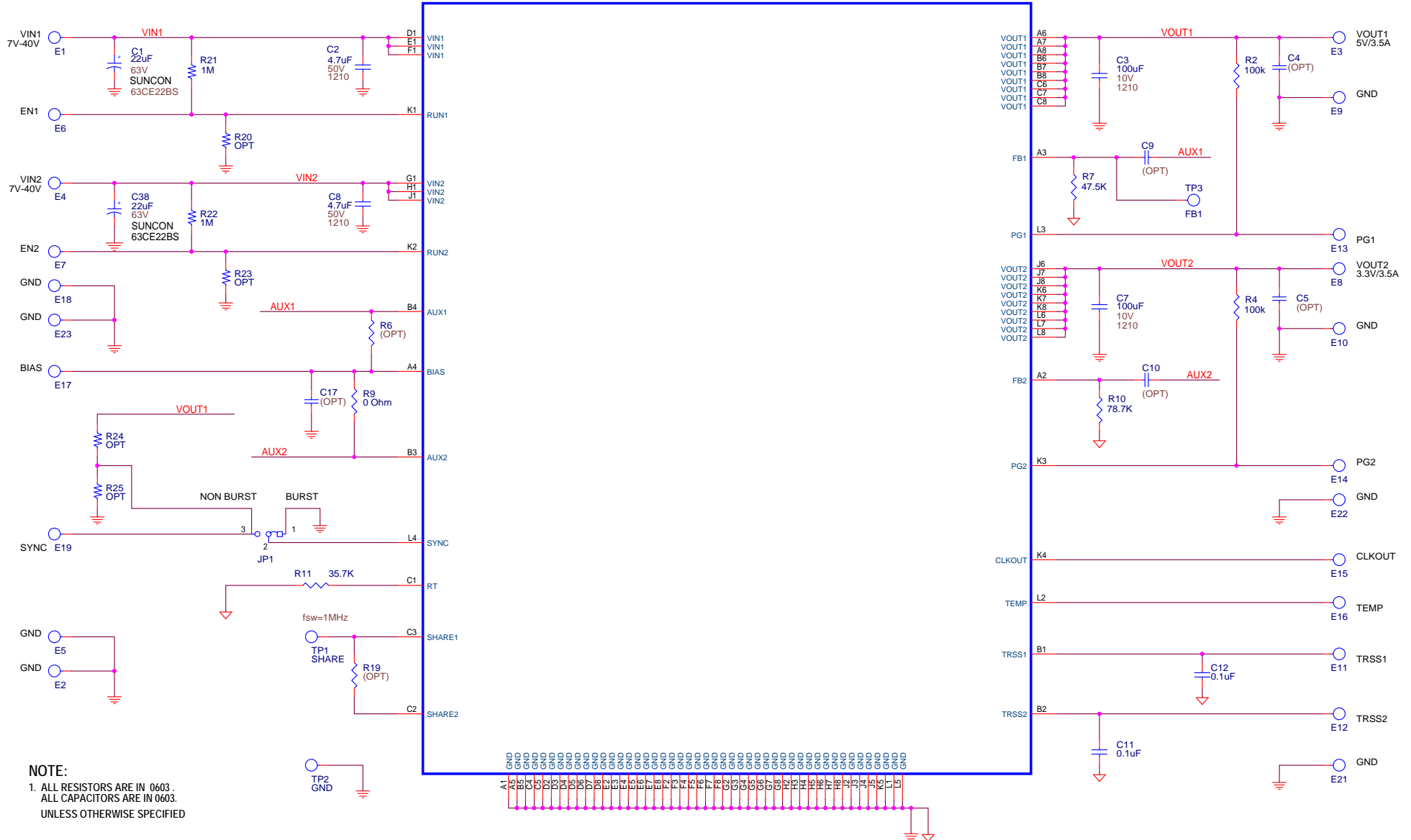
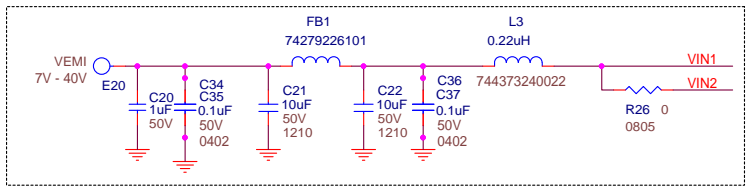


U1 LTM8024EY



NOTE:
 1. ALL RESISTORS ARE IN 0603.
 ALL CAPACITORS ARE IN 0603.
 UNLESS OTHERWISE SPECIFIED

INPUT EMI FILTER



CUSTOMER NOTICE ANALOG DEVICES HAS MADE A BEST EFFORT TO DESIGN A CIRCUIT THAT MEETS CUSTOMER-SUPPLIED SPECIFICATIONS. HOWEVER, IT REMAINS THE CUSTOMER'S RESPONSIBILITY TO VERIFY PROPER AND RELIABLE OPERATION IN THE ACTUAL APPLICATION. COMPONENT SUBSTITUTION AND PRINTED CIRCUIT BOARD LAYOUT MAY SIGNIFICANTLY AFFECT CIRCUIT PERFORMANCE OR RELIABILITY. CONTACT ANALOG DEVICES APPLICATIONS ENGINEERING FOR ASSISTANCE.		APPROVALS PCB DES. HZ APP ENG. Charlie Z.		ANALOG DEVICES www.analog.com		POWER BY LINEAR www.linear.com Phone: (408)432-1900	
TITLE: SCHEMATIC				40V, 3.5A DUAL STEP-DOWN uMODULE REGULATOR			
IC NO. LTM8024EY				SCHEMATIC NO. AND REVISION:			
SKU NO. DC1868A				DC1868A_REV04			
THIS CIRCUIT IS PROPRIETARY TO ANALOG DEVICES AND SUPPLIED FOR USE WITH ANALOG DEVICES PARTS.		SIZE: N/A	DATE: 7-5-18	SHEET 1 OF 1			