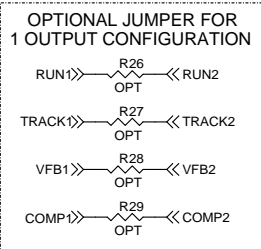
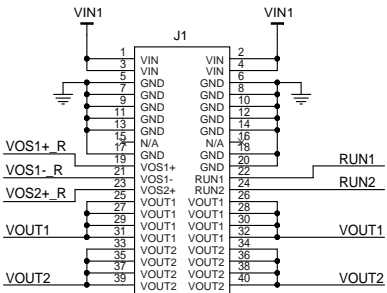


U1 [1]



[1]

VERSION	MODULE
-A	LTM4620
-B	LTM4620A
-C	LTM4628
-D	LTM4630
-E	LTM4630-1
-F	LTM4630A
-G	LTM4631

CUSTOMER NOTICE
 LINEAR TECHNOLOGY HAS MADE A BEST EFFORT TO DESIGN A CIRCUIT THAT MEETS CUSTOMER-SUPPLIED SPECIFICATIONS. HOWEVER, IT REMAINS THE CUSTOMER'S RESPONSIBILITY TO VERIFY PROPER AND RELIABLE OPERATION IN THE ACTUAL APPLICATION. COMPONENT SUBSTITUTION AND PRINTED CIRCUIT BOARD LAYOUT MAY SIGNIFICANTLY AFFECT CIRCUIT PERFORMANCE OR RELIABILITY. CONTACT LINEAR TECHNOLOGY APPLICATIONS ENGINEERING FOR ASSISTANCE.

C:\DESIGN\222268A-2\2268A-2.DSN

THIS CIRCUIT IS PROPRIETARY TO LINEAR TECHNOLOGY AND SUPPLIED FOR USE WITH LINEAR TECHNOLOGY PARTS.

APPROVALS

PCB DES. *MC*

APP ENG. Yingyi Y.

SCALE = NONE

1630 McCarthy Blvd.
 Milpitas, CA 95035 www.linear.com
 Phone: (408)432-1900
 Fax: (408)434-0507
 LTC CONFIDENTIAL - FOR CUSTOMER USE ONLY

LINEAR TECHNOLOGY

TITLE: SCHEMATIC
 HIGH EFFICIENCY, STEP-DOWN, μ MODULE[®]
 REGULATOR

SIZE	IC NO.	LTM4620/LTM4620A/LTM4628/ LTM4630/LTM4630-1/LTM4631	REV.
N/A		DEMO CIRCUIT 2268A	2
DATE:	Monday, November 10, 2014		SHEET 1 OF 1