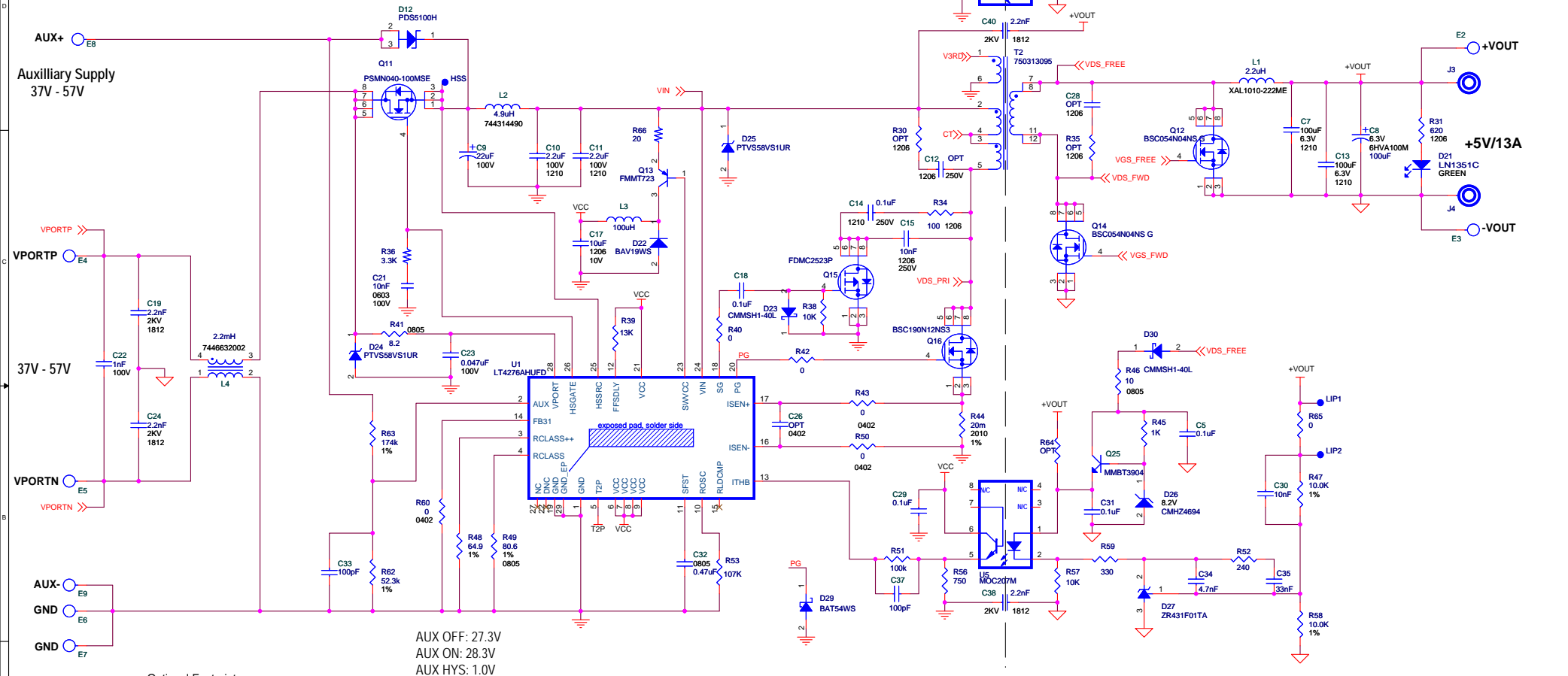


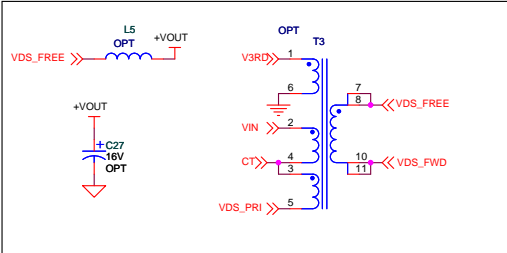
REVISION HISTORY				
ECO	REV	DESCRIPTION	APPROVED	DATE
1	3	PRODUCTION	R. HUFF	01-19-2015

ASSEMBLY VERSION	OUTPUT
DC2262A-A	5V/13A
DC2262A-B	12V/7A



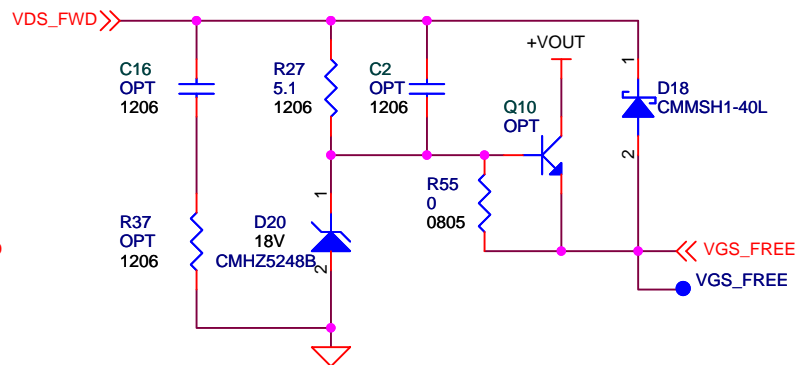
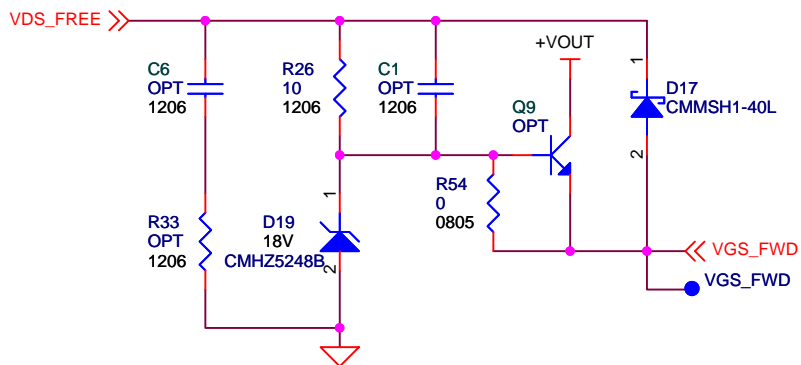
AUX OFF: 27.3V
 AUX ON: 28.3V
 AUX HYS: 1.0V

Optional Footprints



- NOTES:
1. Unless otherwise noted, all resistors on this sheet are 0603, 5%
 2. Unless otherwise noted, all capacitors on this sheet are 0603 and 50V

CUSTOMER NOTICE		APPROVALS			1630 McCarthy Blvd. Milpitas, CA 95035 Phone: (408)432-1900 www.linear.com Fax: (408)434-0507 LTC Confidential-FOR Customer Use Only	
LINEAR TECHNOLOGY HAS MADE A BEST EFFORT TO DESIGN A CIRCUIT THAT MEETS CUSTOMER-SUPPLIED SPECIFICATIONS; HOWEVER, IT REMAINS THE CUSTOMER'S RESPONSIBILITY TO VERIFY PROPER AND RELIABLE OPERATION IN THE ACTUAL APPLICATION. COMPONENT SUBSTITUTION AND PRINTED CIRCUIT BOARD LAYOUT MAY SIGNIFICANTLY AFFECT CIRCUIT PERFORMANCE OR RELIABILITY. CONTACT LINEAR TECHNOLOGY APPLICATIONS ENGINEERING FOR ASSISTANCE.					PCB DES.	R. HUFF
				APP ENG.	R. HUFF	
THIS CIRCUIT IS PROPRIETARY TO LINEAR TECHNOLOGY AND SUPPLIED FOR USE WITH LINEAR TECHNOLOGY PARTS.				SCALE = NONE	DATE:	IC NO. LT4276AHUFD, LT4321IUF DEMO CIRCUIT 2262A-A REV. 3 Tuesday, March 31, 2015
						SHEET 1 OF 2



CUSTOMER NOTICE

LINEAR TECHNOLOGY HAS MADE A BEST EFFORT TO DESIGN A CIRCUIT THAT MEETS CUSTOMER-SUPPLIED SPECIFICATIONS; HOWEVER, IT REMAINS THE CUSTOMER'S RESPONSIBILITY TO VERIFY PROPER AND RELIABLE OPERATION IN THE ACTUAL APPLICATION. COMPONENT SUBSTITUTION AND PRINTED CIRCUIT BOARD LAYOUT MAY SIGNIFICANTLY AFFECT CIRCUIT PERFORMANCE OR RELIABILITY. CONTACT LINEAR TECHNOLOGY APPLICATIONS ENGINEERING FOR ASSISTANCE.

THIS CIRCUIT IS PROPRIETARY TO LINEAR TECHNOLOGY AND SUPPLIED FOR USE WITH LINEAR TECHNOLOGY PARTS.

APPROVALS

PCB DES. R. HUFF

APP ENG. R. HUFF

SCALE = NONE



1630 McCarthy Blvd.
Milpitas, CA 95035
Phone: (408)432-1900 www.linear.com
Fax: (408)434-0507
LTC Confidential-For Customer Use Only

TITLE: SCHEMATIC
HIGH EFFICIENCY LTPOE++ PD INTERFACE
WITH INTEGRATED SWITCHING REGULATOR

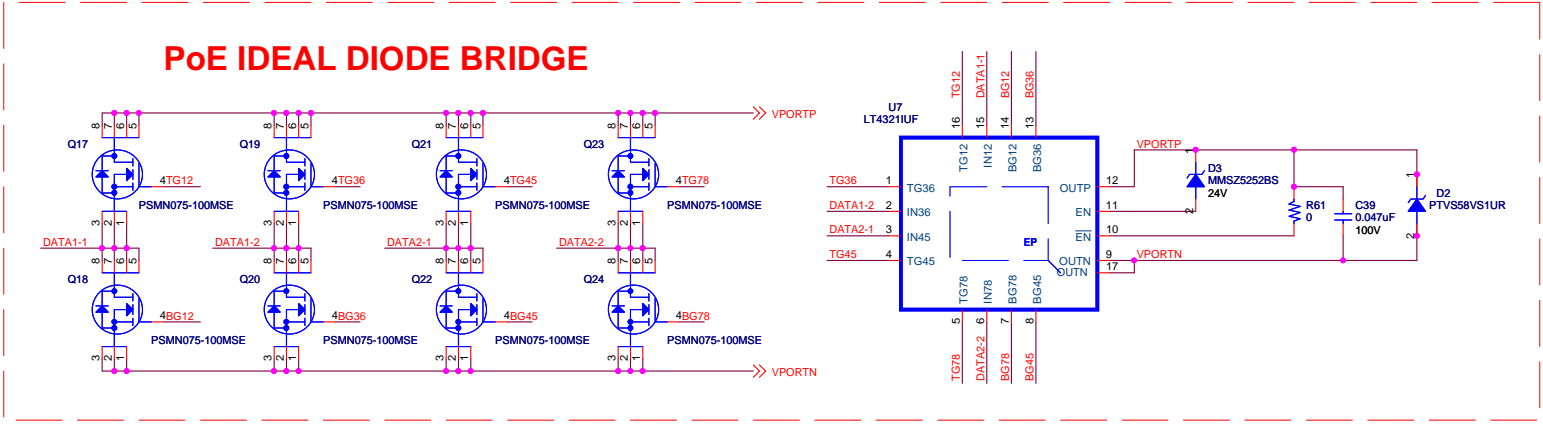
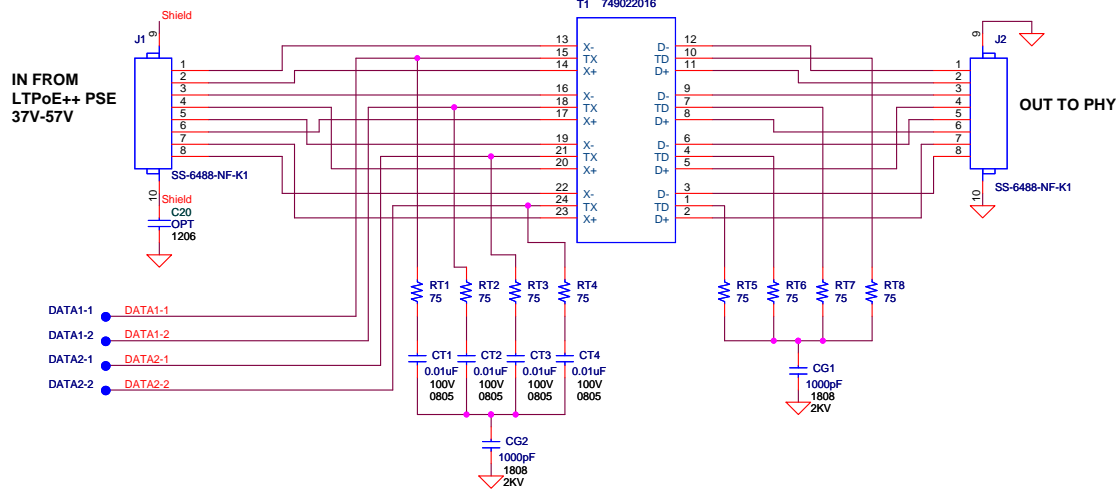
SIZE N/A IC NO. **LT4276AHUFD, LT4321IUF**
DEMO CIRCUIT 2262A-A

REV. 3

DATE: Tuesday, March 31, 2015

SHEET 3 OF 3

REVISION HISTORY				
ECO	REV	DESCRIPTION	APPROVED	DATE
1	1	1ST PROTOTYPE	KAUNG H.	02-22-2012



NOTES:
1. Unless otherwise noted, all resistors on this sheet are 0603, 5%

CUSTOMER NOTICE
LINEAR TECHNOLOGY HAS MADE A BEST EFFORT TO DESIGN A CIRCUIT THAT MEETS CUSTOMER-SUPPLIED SPECIFICATIONS; HOWEVER, IT REMAINS THE CUSTOMER'S RESPONSIBILITY TO VERIFY PROPER AND RELIABLE OPERATION IN THE ACTUAL APPLICATION. COMPONENT SUBSTITUTION AND PRINTED CIRCUIT BOARD LAYOUT MAY SIGNIFICANTLY AFFECT CIRCUIT PERFORMANCE OR RELIABILITY. CONTACT LINEAR TECHNOLOGY APPLICATIONS ENGINEERING FOR ASSISTANCE.

THIS CIRCUIT IS PROPRIETARY TO LINEAR TECHNOLOGY AND SUPPLIED FOR USE WITH LINEAR TECHNOLOGY PARTS.

APPROVALS	
PCB DES.	R. HUFF
APP ENG.	R. HUFF
SCALE = NONE	

LINEAR TECHNOLOGY
1630 McCarthy Blvd.
Milpitas, CA 95035
Phone: (408)432-1900 www.linear.com
Fax: (408)434-0507
LTC Confidential-For Customer Use Only

TITLE: SCHEMATIC
HIGH EFFICIENCY LTPoE++ PD INTERFACE
WITH INTEGRATED SWITCHING REGULATOR

SIZE N/A	IC NO. LT4276AHUFD, LT4321IUF	REV. 3
DATE: Tuesday, March 31, 2015	SHEET 2 OF 3	