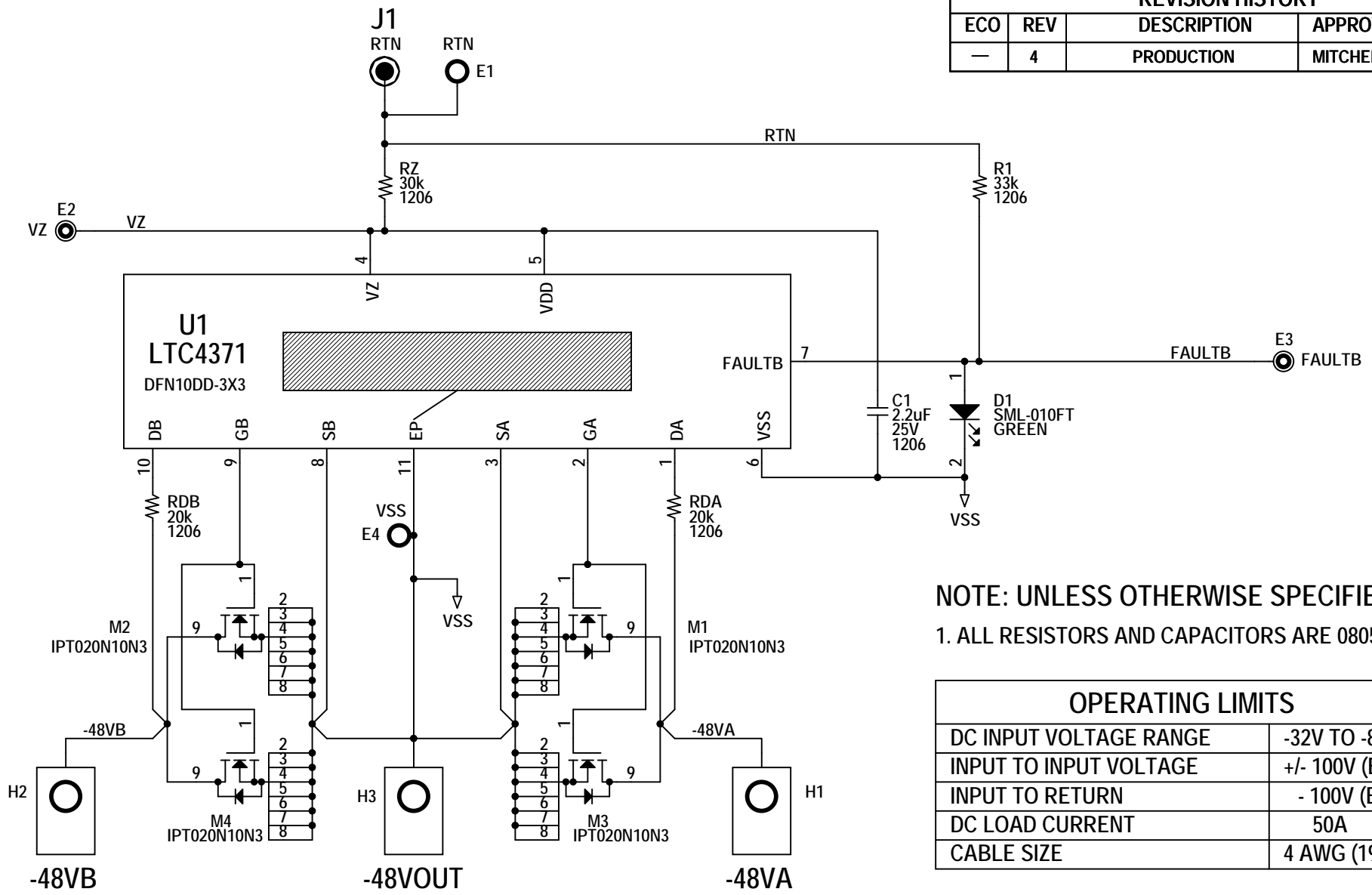


REVISION HISTORY				
ECO	REV	DESCRIPTION	APPROVED	DATE
—	4	PRODUCTION	MITCHEL L.	04-19-16



NOTE: UNLESS OTHERWISE SPECIFIED
 1. ALL RESISTORS AND CAPACITORS ARE 0805.

OPERATING LIMITS	
DC INPUT VOLTAGE RANGE	-32V TO -85V
INPUT TO INPUT VOLTAGE	+/- 100V (BV _{DSS})
INPUT TO RETURN	- 100V (BV _{DSS})
DC LOAD CURRENT	50A
CABLE SIZE	4 AWG (19mm ²)

CUSTOMER NOTICE
 LINEAR TECHNOLOGY HAS MADE A BEST EFFORT TO DESIGN A CIRCUIT THAT MEETS CUSTOMER-SUPPLIED SPECIFICATIONS; HOWEVER, IT REMAINS THE CUSTOMER'S RESPONSIBILITY TO VERIFY PROPER AND RELIABLE OPERATION IN THE ACTUAL APPLICATION. COMPONENT SUBSTITUTION AND PRINTED CIRCUIT BOARD LAYOUT MAY SIGNIFICANTLY AFFECT CIRCUIT PERFORMANCE OR RELIABILITY. CONTACT LINEAR TECHNOLOGY APPLICATIONS ENGINEERING FOR ASSISTANCE.

THIS CIRCUIT IS PROPRIETARY TO LINEAR TECHNOLOGY AND SUPPLIED FOR USE WITH LINEAR TECHNOLOGY PARTS.

APPROVALS	
PCB DES.	KIM T.
APP ENG.	MITCHELL L.
SCALE = NONE	

1630 McCarthy Blvd.
 Milpitas, CA 95035
 Phone: (408)432-1900 www.linear.com
 Fax: (408)434-0507
 LTC Confidential-For Customer Use Only

TITLE: SCHEMATIC		
DUAL NEGATIVE VOLTAGE DIODE-OR CONTROLLER		
SIZE N/A	IC NO. LTC4371IDD	REV. 4
DATE: Tuesday, April 19, 2016		SHEET 1 OF 1