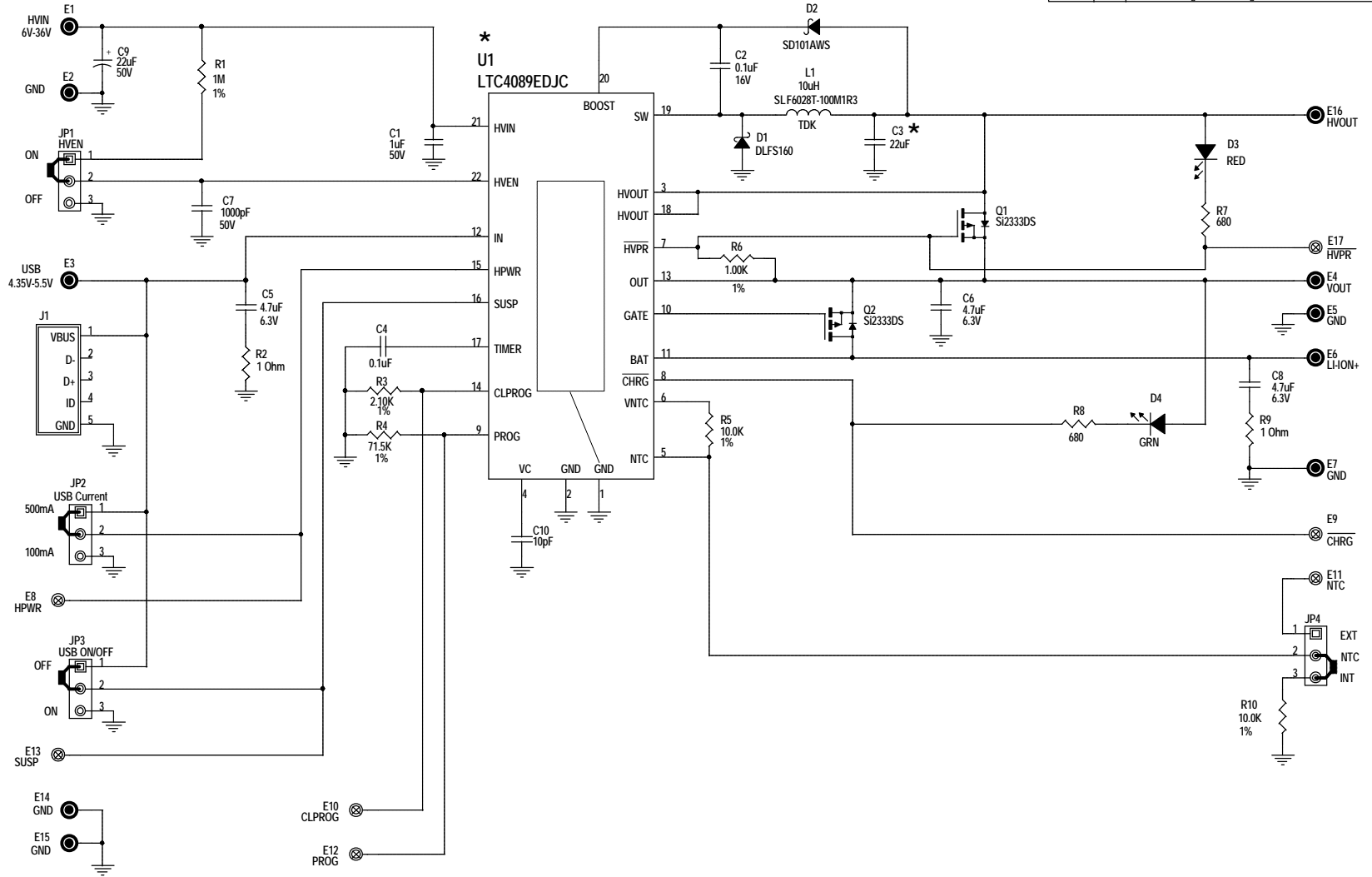



REVISION HISTORY				
ECO	REV	DESCRIPTION	DATE	APPROVED
#	0	PROTOTYPE (929A_16.PCB)	06/08/05	KEVIN HUANG
	1	929A_Rev1.DSN/PCB		Liu Yang
	2	929A_Rev2.dsn/929A_Rev2.pcb		Liu Yang
	3	R6 From 10K to 1K 1% C3 Voltage and Package	05/09/06	Liu Yang



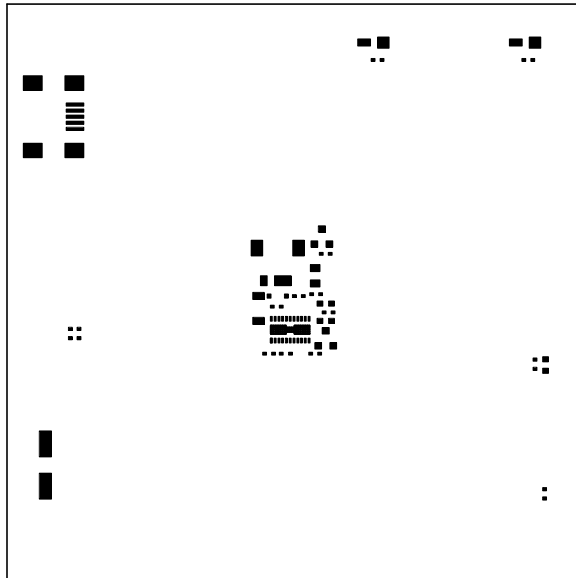
BOARD ASSEMBLY

	U1 *	C3 *
DC929A-A	LTC4089EDJIC	22uF 16V
DC929A-B	LTC4089EDJIC-5	22uF 6.3V

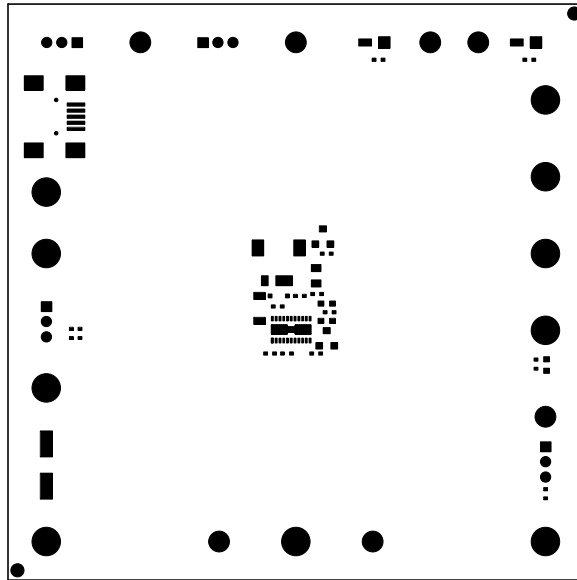
CUSTOMER NOTICE		CONTRACT NO.		 1630 McCarthy Blvd. Milpitas, CA 95035 Phone: (408)432-1900 Fax: (408)434-0507 LTC Confidential-For Customer Use Only	
LINEAR TECHNOLOGY HAS MADE A BEST EFFORT TO DESIGN A CIRCUIT THAT MEETS CUSTOMER-SUPPLIED SPECIFICATIONS; HOWEVER, IT REMAINS THE CUSTOMER'S RESPONSIBILITY TO VERIFY PROPER AND RELIABLE OPERATION IN THE ACTUAL APPLICATION. COMPONENT SUBSTITUTION AND PRINTED CIRCUIT BOARD LAYOUT MAY SIGNIFICANTLY AFFECT CIRCUIT PERFORMANCE OR RELIABILITY. CONTACT LINEAR TECHNOLOGY APPLICATIONS ENGINEERING FOR ASSISTANCE.		APPROVALS			
DRAWN: Rudy B		CHECKED:		TITLE: SCHEMATIC	
APPROVED:		APPROVED:		USB Power Manager with High Voltage Switching Charger	
ENGINEER: Liu Yang		DESIGNER:		SIZE DWG NO. DEMO CIRCUIT 929A REV 3	
THIS CIRCUIT IS PROPRIETARY TO LINEAR TECHNOLOGY AND SUPPLIED FOR USE WITH LINEAR TECHNOLOGY PARTS.		DATE: Thursday, May 11, 2006		SHEET 1 OF 1	

Linear Tech. Corp.
Demo Circuit 929A

PasteMask Top

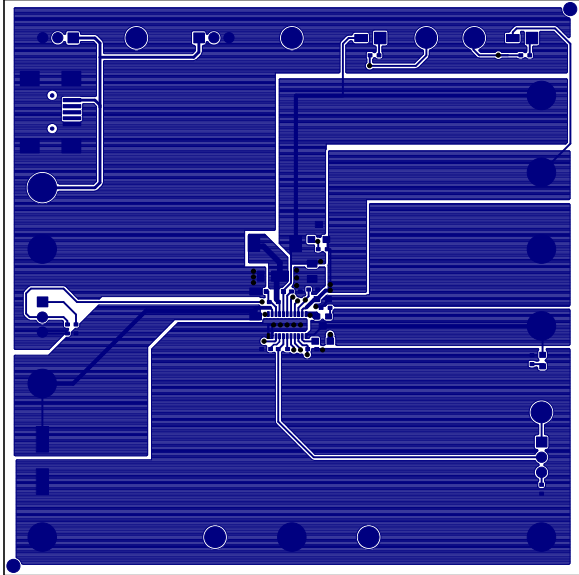


Linear Tech. Corp.
Demo Circuit 929A
SolderMask Top



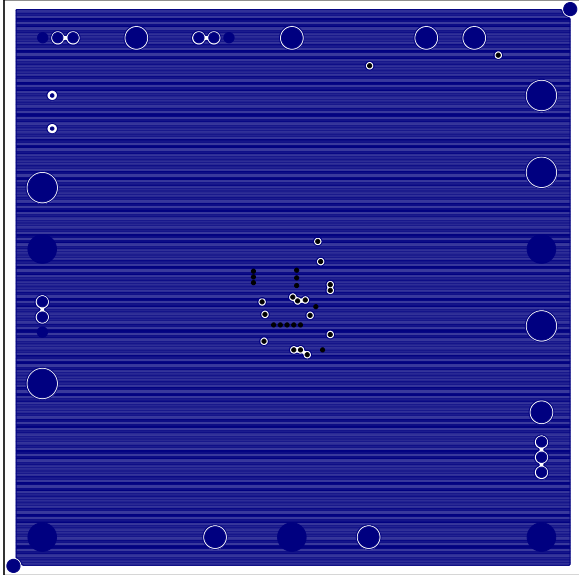
Linear Tech. Corp.
Demo Circuit 929A

Component Side



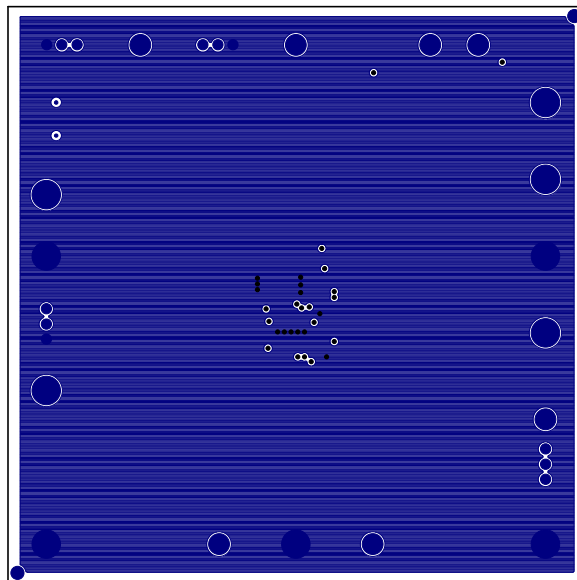
Linear Tech. Corp.
Demo Circuit 929A

Layer2



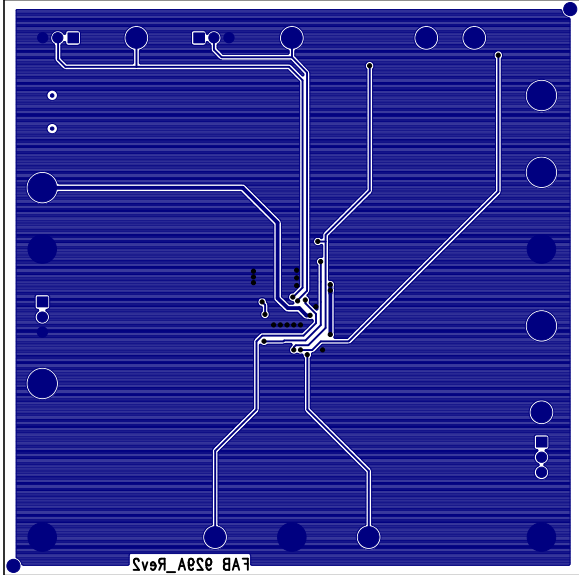
Linear Tech. Corp.
Demo Circuit 929A

Layer3



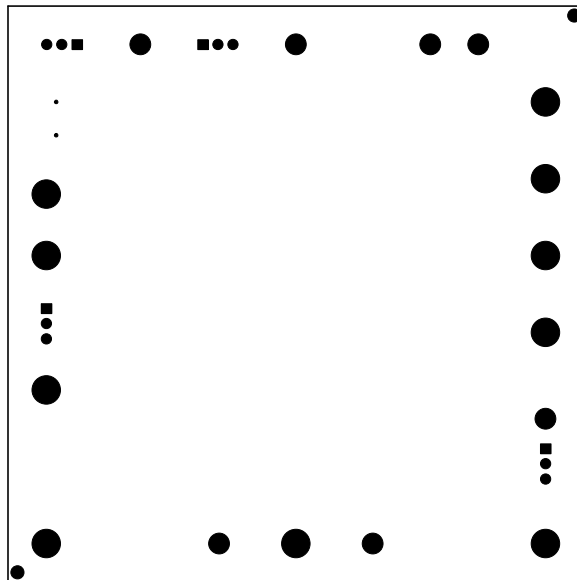
Linear Tech. Corp.
Demo Circuit 929A

Solder Side

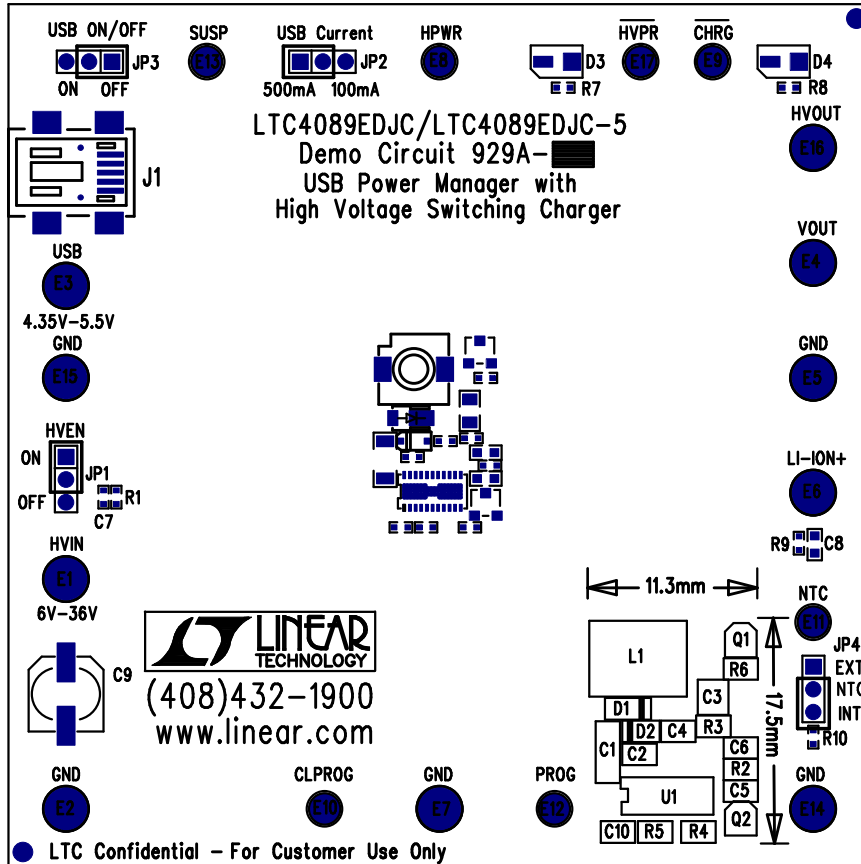


Linear Tech. Corp.
Demo Circuit 929A

SolderMask Bottom




Linear Tech. Corp.
 Demo Circuit 929A
 Silkscreen Top



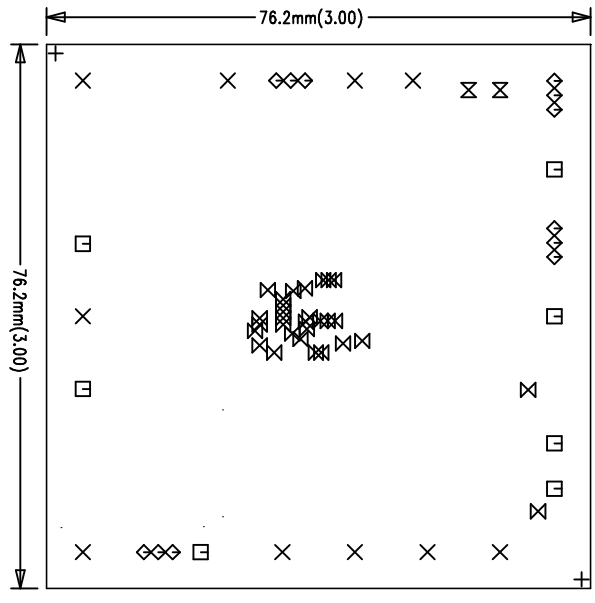
BOARD ASSEMBLY

	U1
DC929A-A	LTC4089EDJC
DC929A-B	LTC4089EDJC-5

Assembly, Top Drawing

APPROVALS			 LINEAR TECHNOLOGY 1630 McCarthy Blvd. Milpitas, CA 95035 PH: (408)432-1900
	INIT	DATE	
DRAWN	RmB		TITLE: USB Power Manager with High Voltage Switching Charger
CHECK			
DESIGN	LiuYang		
ENGR	LiuYang		
			SIZE NONE Demo Circuit 929A REV. 2
SCALE = NONE		DES-23xxxx	SHT 1 of 1

Linear Tech, Corp.
Demo Circuit 929A

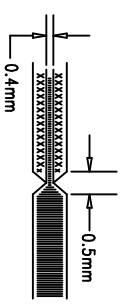


SIZE	QTY	SYM	PLTD	TOL
1.778	2	+	NO	+/-0.08mm
2.3876	10	X	YES	+/-0.08mm
1.6002	7	□	YES	+/-0.08mm
0.7874	12	◇	YES	+/-0.08mm
0.254	30	X	YES	+/-0.08mm
0.889	2	⊗	NO	+/-0.08mm


REVISIONS		
REV	APPR	DATE

NOTES: UNLESS OTHERWISE SPECIFIED:

- ARTWORK P/N Demo Circuit 929A Rev2
- FAB PER IPC-A-600, 4-Layers.
- MATERIAL: EPOXY FIBERGLASS, NEMA GRADE FR-4
1.6mm +/- 0.13mm THICKNESS WITH 2 OZ. COPPER FINISH ON TWO OUTER LAYERS AND 1 OZ. COPPER ON TWO INTERNAL LAYERS.
FLAMMABILITY RATING: 94 V-2 MINIMUM .
- SIZE: CUT TO DIMENSIONS AND TOLERANCES SHOWN.
0.00 ARE PRIMARY DATUMS.
- BOARD: SELECTIVE PLATED BOARD. SOLDER MASK OVER BARE COPPER, COLOR, GREEN LPL. WHITE TIN IMMERSION (OMIKRON) BOTH SIDES. SILKSCREEN COMPONENT SIDE WITH WHITE NON-CONDUCTIVE INK.
PLATE THRU ALL HOLES WITH COPPER
MIN. PLATING THICKNESS: 1 OZ. EXCEPT WHERE PLATING NOT REQUIRED
- DRILL: ALL HOLES SHALL BE DRILLED +/- .08mm WITH RESPECT TO CTR. OF DRILLED PAD. ALL HOLES FINISHED SIZE AFTER PLATING.
- DROP ALL UNUSED PADS ON INNER LAYERS.
- DO NOT ALTER ARTWORK e.g. TO ADD LOGO OR DATE CODE.
- SCORING:



Fabrication Drawing

APPROVALS		TITLE	
DRAWN	INIT DATE	 LINEAR TECHNOLOGY 1630 McCarthy Blvd. Milpitas, CA 95035 Ph: (408)432-1900	
CHECK	Rmb		
DESIGN	LivYang		
ENGR	LivYang		
SCALE = NONE		SIZE	REV. 2
DES-23xxx		Demo Circuit 929A	SHT 1 of 1

Linear Tech. Corp.
 Demo Circuit 929A
 Silkscreen Top

