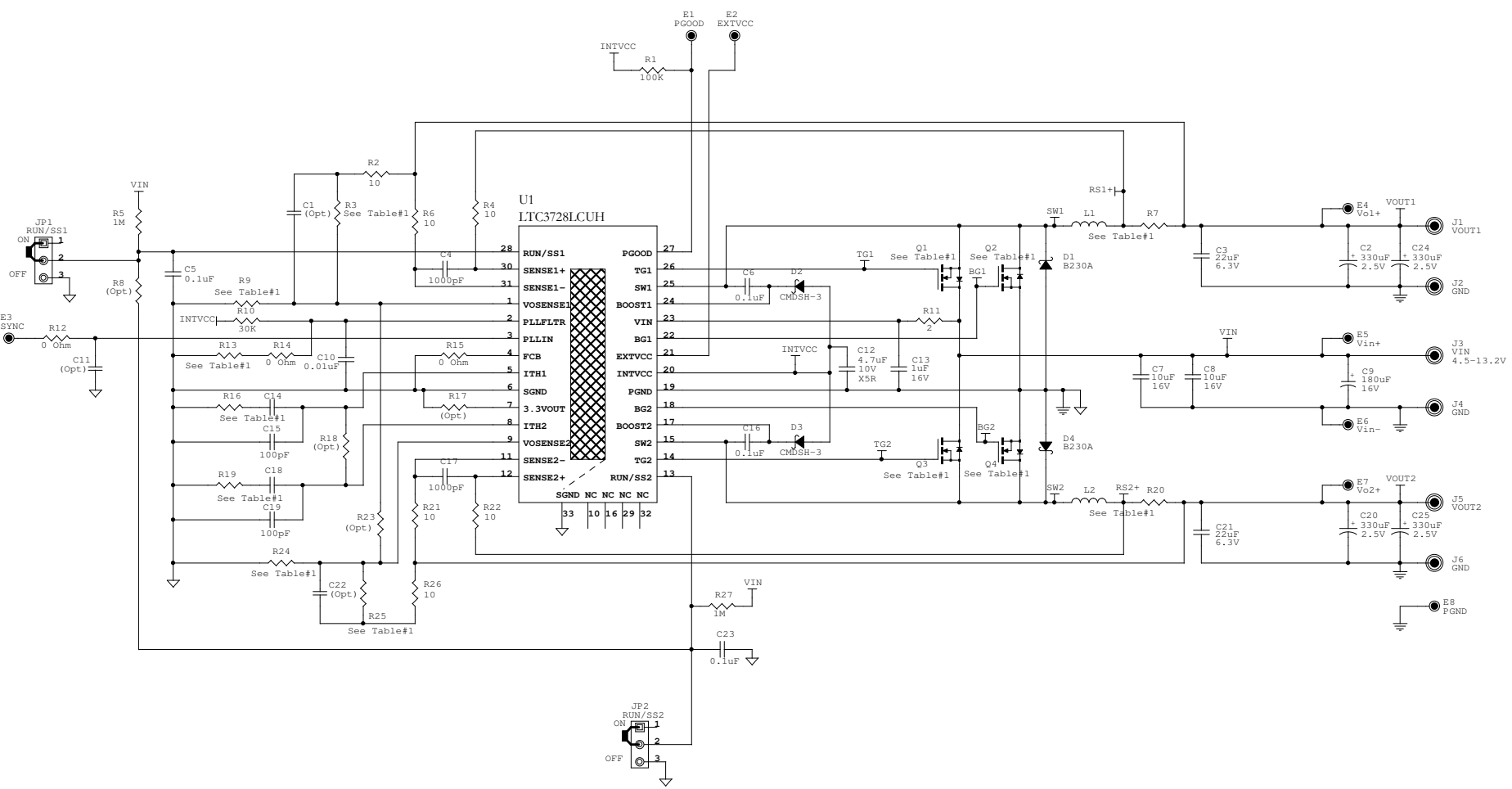


This circuit is proprietary to Linear Technology and supplied for use with Linear Technology parts.
Customer Notice: Linear Technology has made a best effort to design a circuit that meets customer-supplied specifications; however, it remains the customer's responsibility to verify proper and reliable operation in the actual application. Component substitution and printed circuit board layout may significantly affect circuit performance or reliability. Contact Linear Applications Engineering for assistance.

REVISION HISTORY				
ECO	REV	DESCRIPTION	DATE	APPROVED
-	0	PROTOTYPE (898A_09.PCB)	04/19/05	-



BOARD ASSEMBLY

	VOUT1	VOUT2
DC898A-A	2.0V/10A	1.8V/10A
DC898A-B	1.5V/15A	1.2V/15A

TABLE #1

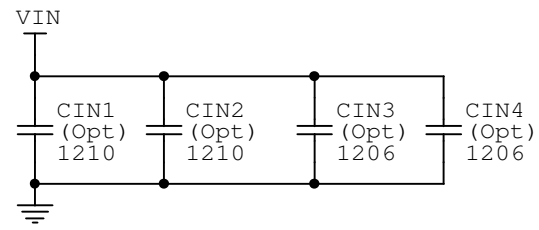
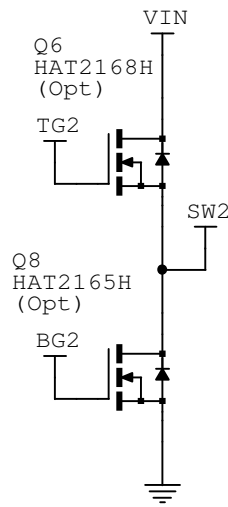
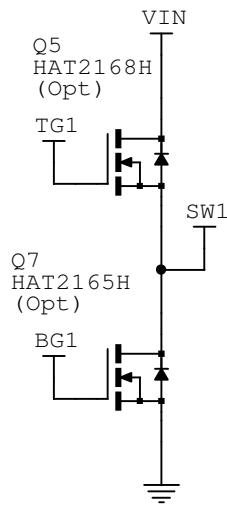
	OUTPUT		INDUCTOR	R _{sense}	MOSFET		FEEDBACK DIVIDER				f _{sw}	ITH COMP	
	VOUT1	VOUT2	L1, L2	R7, R20	Q1, Q3	Q2, Q4	R3	R9	R24	R25	R13	R16, R19	C14, C18
DC898A-A	2.0V/10A	1.8V/10A	Toko FDU0650-0.56uH	0.003 IRC/2010	Vishay Si4392ADY	Vishay Si4336	15K	10K	15K	18.7K	15K (450kHz)	39K, 5%	560pF
DC898A-B	1.5V/15A	1.2V/15A	Vitec 59P9875N 0.4uH	0.002 IRC/2010	Renesas HAT2168	Renesas HAT2165	9.31K	10.7K	11.8K	5.9K	11.5K (400kHz)	15K, 5%	1000pF

Linear Technology Corp. 1630 McCarthy Blvd., Milpitas, CA 95035-7417
 Phone: (408)432-1900 Fax: (408)434-0507
 www.linear.com

Title: 2-PHASE DUAL OUTPUT HIGH DENSITY POWER SUPPLY

Size: Document Number 898A_Rev1.DSN/898A_Rev1.PCB DEMO CIRCUIT 898A Rev 1

Date: Friday, December 09, 2005 Sheet 1 of 2



This circuit is proprietary to Linear Technology and supplied for use with Linear Technology parts.

Customer Notice: Linear Technology has made a best effort to design a circuit that meets customer-supplied specifications; however, it remains the customers responsibility to verify proper and reliable operation in the actual application, Component substitution and printed circuit board layout may significantly affect circuit performance or reliability. Contact Linear Applications Engineering for assistance.

Linear Technology Corp.		1630 McCarthy Blvd., Milpitas, CA 95035-7417 Phone: (408)432-1900 Fax: (408)434-0507 www.linear.com	
Title 2-PHASE DUAL OUTPUT HIGH DENSITY POWER SUPPLY			
Size	Document Number	DEMO CIRCUIT 898A	Rev 1
Date:	Friday, December 09, 2005	Sheet	2 of 2