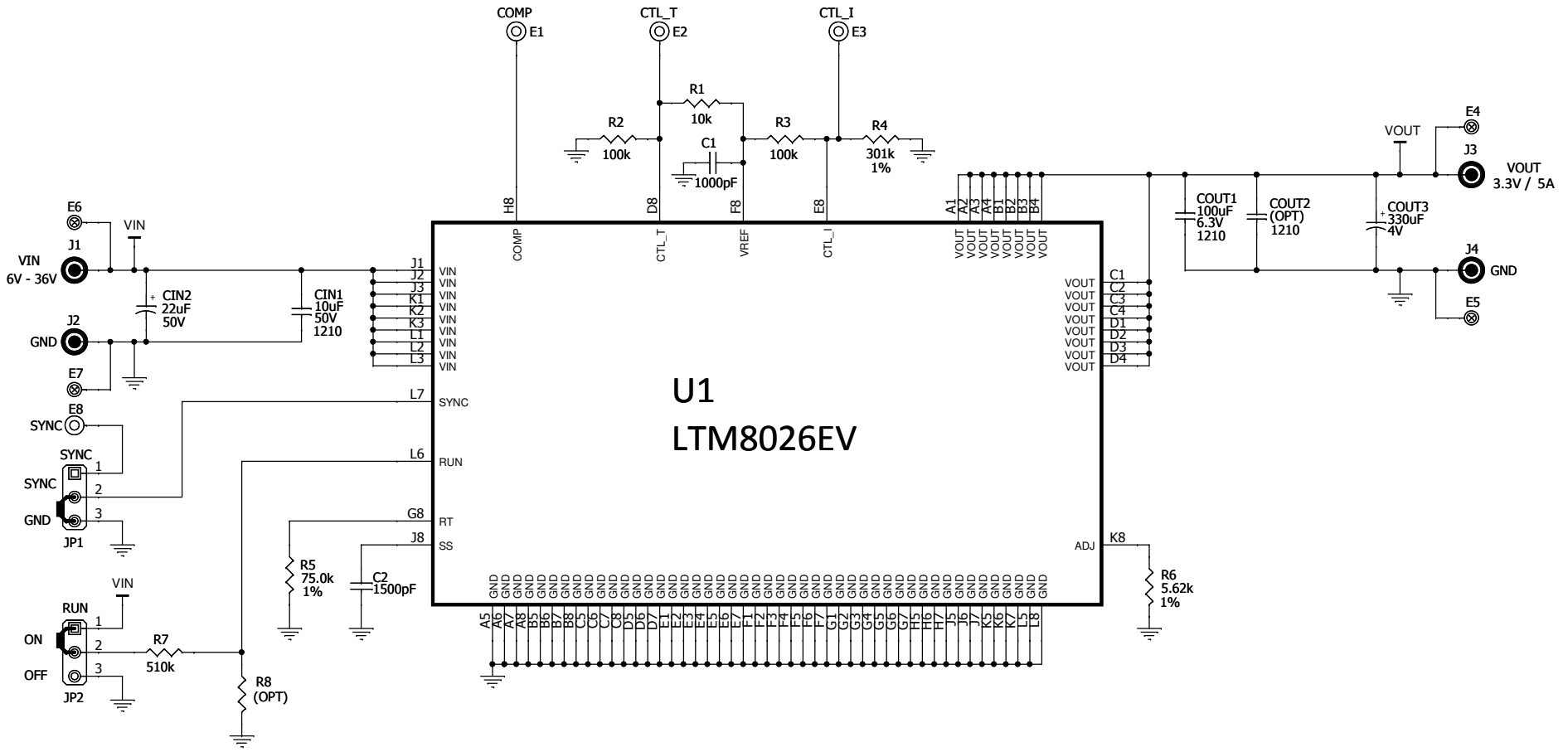
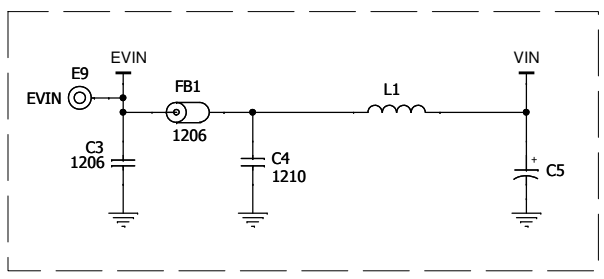


REVISION HISTORY				
ECO	REV	DESCRIPTION	APPROVED	DATE
-	2	PRODUCTION	WALKER B.	10/??/11




Optional Circuit



**CUSTOMER NOTICE**  
 LINEAR TECHNOLOGY HAS MADE A BEST EFFORT TO DESIGN A CIRCUIT THAT MEETS CUSTOMER-SUPPLIED SPECIFICATIONS; HOWEVER, IT REMAINS THE CUSTOMER'S RESPONSIBILITY TO VERIFY PROPER AND RELIABLE OPERATION IN THE ACTUAL APPLICATION. COMPONENT SUBSTITUTION AND PRINTED CIRCUIT BOARD LAYOUT MAY SIGNIFICANTLY AFFECT CIRCUIT PERFORMANCE OR RELIABILITY. CONTACT LINEAR TECHNOLOGY APPLICATIONS ENGINEERING FOR ASSISTANCE.  
 C:\PADS PROJECTS\1696A\SCH\1696A\_REV2.DSN

**THIS CIRCUIT IS PROPRIETARY TO LINEAR TECHNOLOGY AND SUPPLIED FOR USE WITH LINEAR TECHNOLOGY PARTS.**

<b>APPROVALS</b>		 1630 McCarthy Blvd. Milpitas, CA 95035 www.linear.com Phone: (408)432-1900 Fax: (408)434-0507 <small>LTC CONFIDENTIAL - FOR CUSTOMER USE ONLY</small>	
PCB DES.	R.B.		
APP ENG.	WALKER B.	<b>TITLE: SCHEMATIC</b> 36V, 5A, CVCC STEP-DOWN μMODULE REGULATOR	
SIZE	N/A	IC NO.	LTM8026EV
			DEMO CIRCUIT 1696A
		REV.	2
SCALE = NONE		DATE:	Thursday, December 22, 2011
		SHEET	1 OF 1