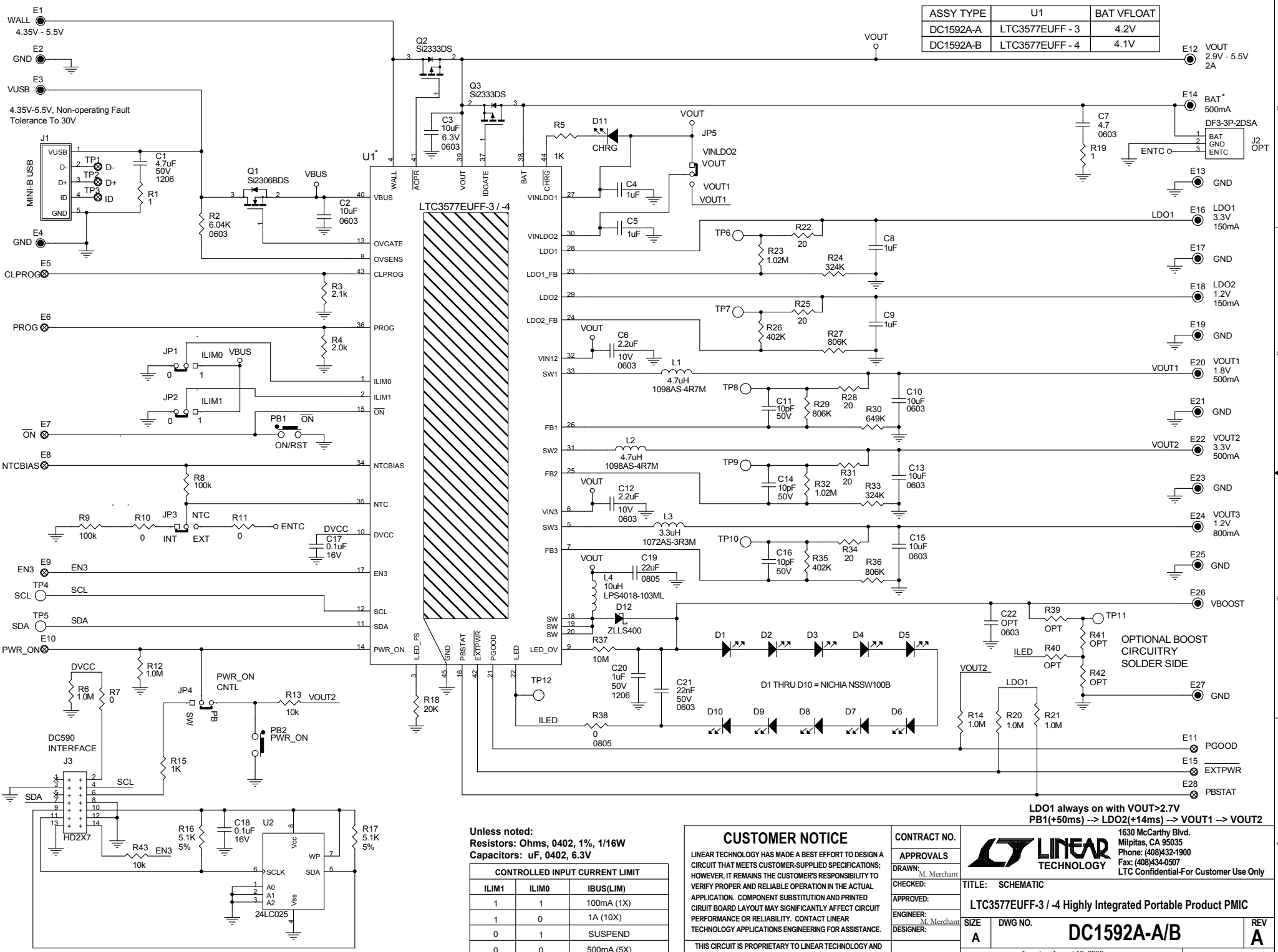


ASSY TYPE	U1	BAT VFLOAT
DC1592A-A	LTC3577EUFF-3	4.2V
DC1592A-B	LTC3577EUFF-4	4.1V



Unless noted:
Resistors: Ohms, 0402, 1%, 1/16W
Capacitors: uF, 0402, 6.3V

CONTROLLED INPUT CURRENT LIMIT		
ILIM1	ILIM0	IBUS(LIM)
1	1	100mA (1X)
1	0	1A (10X)
0	1	SUSPEND
0	0	500mA (5X)

CUSTOMER NOTICE
LINEAR TECHNOLOGY HAS MADE A BEST EFFORT TO DESIGN A CIRCUIT THAT MEETS CUSTOMER-SUPPLIED SPECIFICATIONS; HOWEVER, IT REMAINS THE CUSTOMER'S RESPONSIBILITY TO VERIFY PROPER AND RELIABLE OPERATION IN THE ACTUAL APPLICATION. COMPONENT SUBSTITUTION AND PRINTED CIRCUIT BOARD LAYOUT MAY SIGNIFICANTLY AFFECT CIRCUIT PERFORMANCE OR RELIABILITY. CONTACT LINEAR TECHNOLOGY APPLICATIONS ENGINEERING FOR ASSISTANCE.
THIS CIRCUIT IS PROPRIETARY TO LINEAR TECHNOLOGY AND SUPPLIED FOR USE WITH LINEAR TECHNOLOGY PARTS.

CONTRACT NO.		1630 McCarthy Blvd. Milpitas, CA 95035 Phone: (408)432-1900 Fax: (408)434-0507 LTC Confidential-For Customer Use Only
APPROVALS		TITLE: SCHEMATIC
DRAWN: M. Merchant	APPROVED:	LTC3577EUFF-3 / -4 Highly Integrated Portable Product PMIC
CHECKED:	ENGINEER: M. Merchant	DESIGNER:
DATE:	SIZE A	DWG NO. DC1592A-A/B
Tuesday, August 18, 2009	SHEET 1 OF 1	REV A