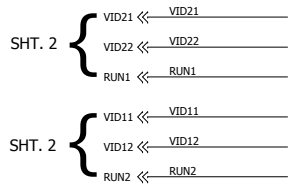
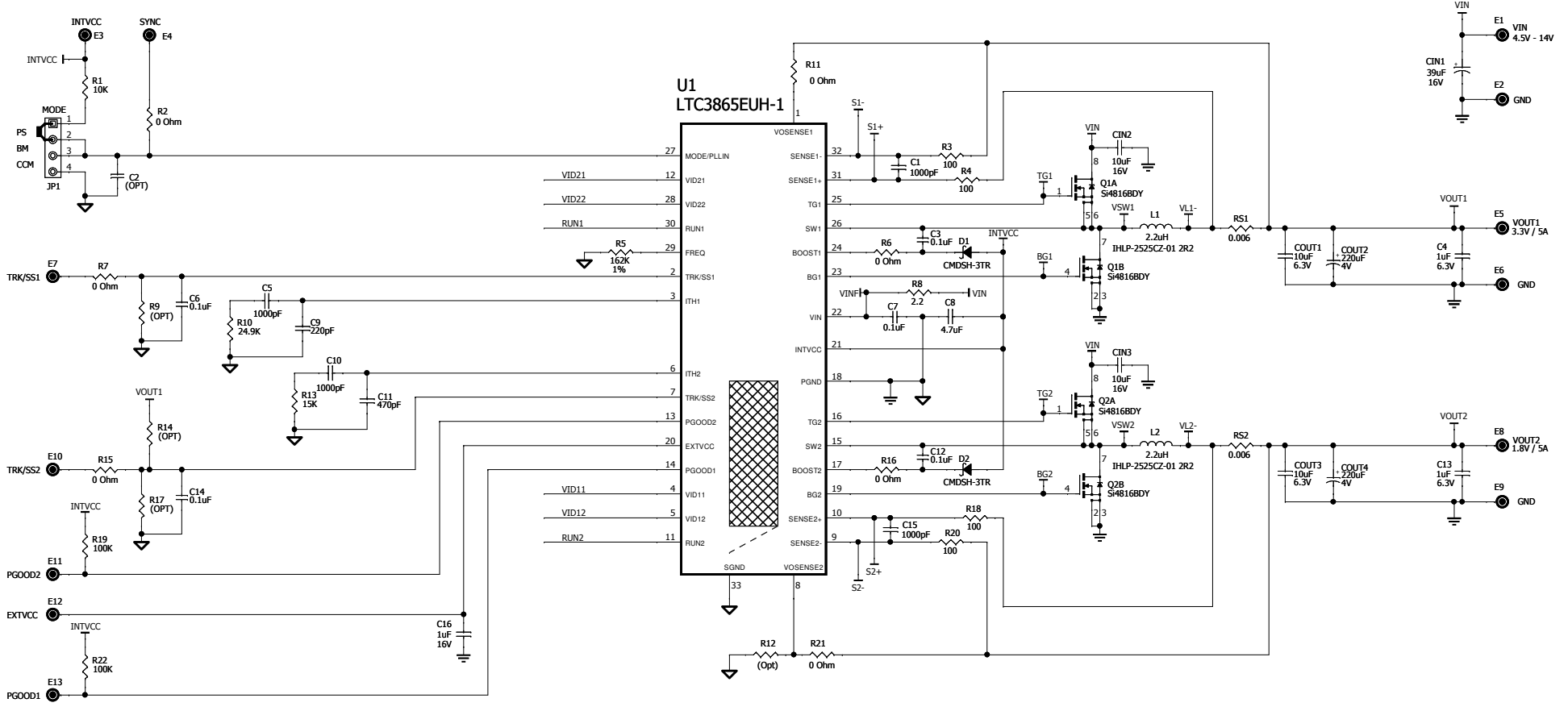


REVISION HISTORY

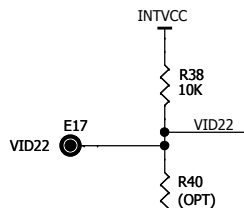
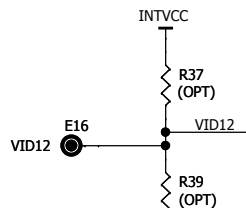
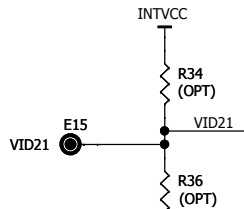
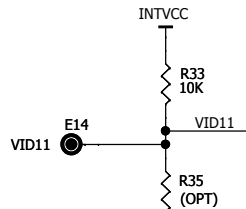
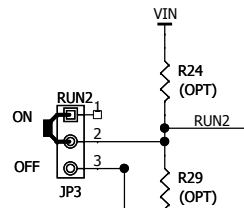
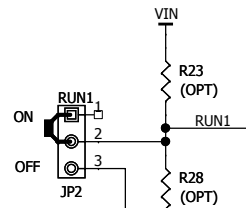
ECO	REV	DESCRIPTION	APPROVED	DATE
-	2	PRODUCTION	CHARLIE Z.	06-15-10



NOTE: UNLESS OTHERWISE SPECIFIED.

1. ALL RESISTORS ARE IN OHMS, 0603.
ALL CAPACITORS ARE IN MICROFARADS, 0603.
2. INSTALL SHUNTS AS SHOWN.

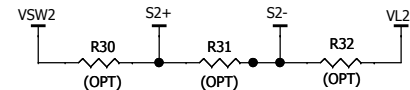
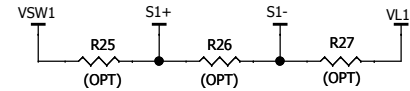
CUSTOMER NOTICE		APPROVALS		LINEAR TECHNOLOGY	
<p>LINEAR TECHNOLOGY HAS MADE A BEST EFFORT TO DESIGN A CIRCUIT THAT MEETS CUSTOMER-SUPPLIED SPECIFICATIONS; HOWEVER, IT REMAINS THE CUSTOMER'S RESPONSIBILITY TO VERIFY PROPER AND RELIABLE OPERATION IN THE ACTUAL APPLICATION. COMPONENT SUBSTITUTION AND PRINTED CIRCUIT BOARD LAYOUT MAY SIGNIFICANTLY AFFECT CIRCUIT PERFORMANCE OR RELIABILITY. CONTACT LINEAR TECHNOLOGY APPLICATIONS ENGINEERING FOR ASSISTANCE.</p>		PCB DES.	RB	<p>1630 McCarthy Blvd. Milpitas, CA 95035 www.linear.com Phones: (408)322-1500 Fax: (408)434-0507 LTC CONFIDENTIAL - FOR CUSTOMER USE ONLY</p>	
		APP ENG.	CHARLIE Z.	<p>TITLE: SCHEMATIC DUAL 5A BUCK CONVERTER WITH PIN SELECTABLE OUTPUTS</p>	
		SCALE = NONE		SIZE	IC NO.
				N/A	LTC3865EUH-1
				DATE:	REV.
				Friday, September 24, 2010	2
				SHEET 1	OF 2



SHT. 1 { RUN1 >> RUN1
VID11 >> VID11
VID12 >> VID12

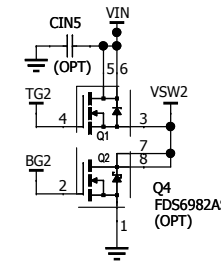
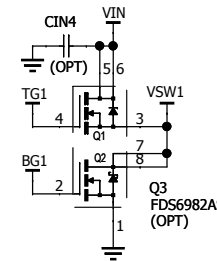
SHT. 1 { RUN2 >> RUN2
VID21 >> VID21
VID22 >> VID22

VID11/VID21	VID12/VID22	VOUT1/VOUT2 (V)
INTVCC	INTVCC	5.0
INTVCC	FLOAT	3.3
INTVCC	GND	2.5
FLOAT	INTVCC	1.8
FLOAT	FLOAT	0.6 or External Divider
FLOAT	GND	1.5
GND	INTVCC	1.2
GND	FLOAT	1.0
GND	GND	1.1



OPTIONAL DCR SENSING

NOTE: WHEN DCR SENSING IS IMPLEMENTED SHORT RS1 AND RS2.
DO NOT POPULATE R3, R4, R18 AND R20.



OPTIONAL MOSFETS

CUSTOMER NOTICE

LINEAR TECHNOLOGY HAS MADE A BEST EFFORT TO DESIGN A CIRCUIT THAT MEETS CUSTOMER-SUPPLIED SPECIFICATIONS; HOWEVER, IT REMAINS THE CUSTOMER'S RESPONSIBILITY TO VERIFY PROPER AND RELIABLE OPERATION IN THE ACTUAL APPLICATION. COMPONENT SUBSTITUTION AND PRINTED CIRCUIT BOARD LAYOUT MAY SIGNIFICANTLY AFFECT CIRCUIT PERFORMANCE OR RELIABILITY. CONTACT LINEAR TECHNOLOGY APPLICATIONS ENGINEERING FOR ASSISTANCE.

THIS CIRCUIT IS PROPRIETARY TO LINEAR TECHNOLOGY AND SUPPLIED FOR USE WITH LINEAR TECHNOLOGY PARTS.

APPROVALS

PCB DES. R'B
APP ENG. CHARLIE Z.

SCALE = NONE



1630 McCarthy Blvd.
Milpitas, CA 95035 www.linear.com
Phone: (408)432-1900
Fax: (408)434-0507

LTC CONFIDENTIAL - FOR CUSTOMER USE ONLY

TITLE: SCHEMATIC
DUAL 5A BUCK CONVERTER WITH
PIN SELECTABLE OUTPUTS

SIZE N/A	IC NO. LTC3865EUH-1	REV. 2
DATE: Friday, September 24, 2010		SHEET 2 OF 2