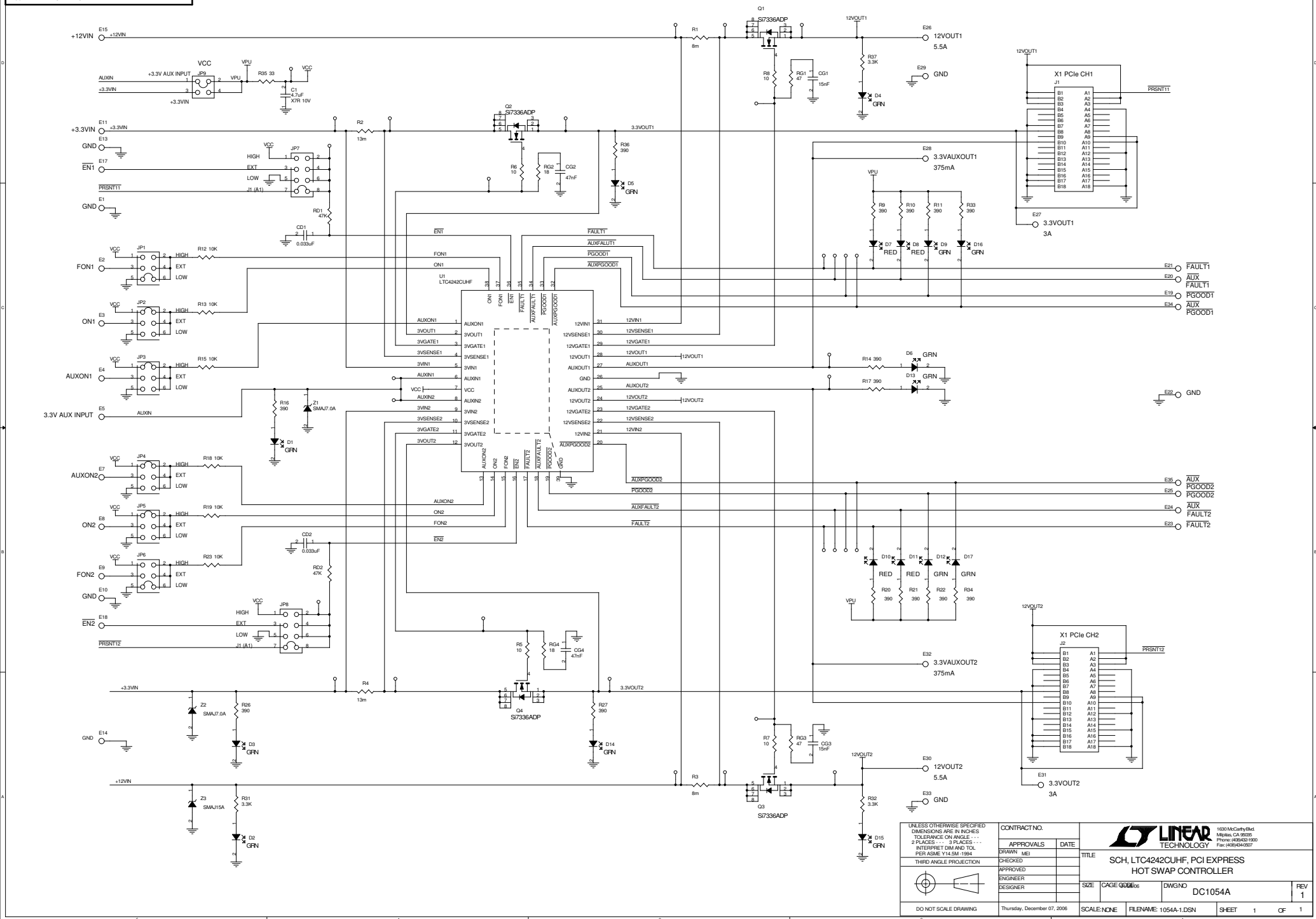


This circuit is proprietary to Linear Technology and supplied for use with Linear Technology parts.
Customer Notice: Linear Technology has made a best effort to design a circuit that meets customer-supplied specifications; however, it remains the customer's responsibility to verify proper and reliable operation in the actual application. Component substitution and printed circuit board layout may significantly affect circuit performance or reliability. Contact Linear Applications Engineering for assistance.

REVISION HISTORY				
ECO	REV	DESCRIPTION	DATE	APPROVED
	1	PROTO	01/28/06	



UNLESS OTHERWISE SPECIFIED
 DIMENSIONS ARE IN INCHES
 TOLERANCES ON ANGLES - -
 2 PLACES - - - 3 PLACES - - -
 INTERPRET DIM AND TOL
 PER ASME Y14.5M-1994

APPROVALS		DATE
DRAWN: MEI		
CHECKED:		
APPROVED:		
ENGINEER:		
DESIGNER:		

THIRD ANGLE PROJECTION

DO NOT SCALE DRAWING

Thursday, December 07, 2006

CONTRACT NO.		TITLE	
SCH, LTC4242UHF, PCI EXPRESS		HOT SWAP CONTROLLER	
SIZE	CAGE CODE	DWG NO	REV
SCALE: NONE	FILE NAME: 1054A-1.DSN	DC1054A	1
SHEET	1	CF	1

LINEAR TECHNOLOGY
 1620 McCarty Blvd
 Milpitas, CA 95035
 Phone: 408.582.1000
 Fax: 408.943.0057