

Precision 7V Reference

DESCRIPTION

The **RH1021-7** is a precision 7V reference with ultralow drift and noise, extremely good long-term stability and almost total immunity to input voltage variations. The reference output will source and sink up to 10mA. This reference can also be used as a shunt regulator (2-terminal Zener). Unique circuit design makes the RH1021-7 the first IC reference to offer ultralow drift without the use of high power on-chip heaters.

The wafer lots are processed to Linear Technology's in-house Class S flow to yield circuits usable in stringent military applications.

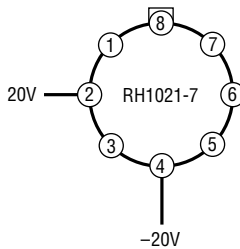
All registered trademarks and trademarks are the property of their respective owners.

ABSOLUTE MAXIMUM RATINGS

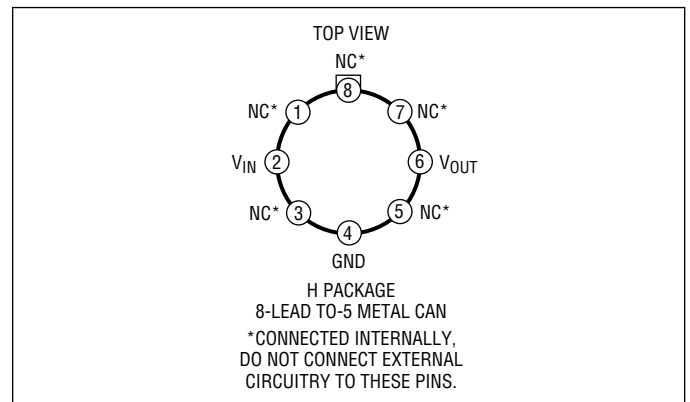
(Note 10)

Input Voltage.....	40V
Input/Output Voltage Differential	35V
Output to Ground Voltage (Shunt Mode Current Limit)	10V
Output Short-Circuit Duration $V_{IN} = 35V$	10 sec
$V_{IN} \leq 20V$	Indefinite
Operating Temperature Range	-55°C to 125°C
Maximum Junction Temperature	150°C
Storage Temperature Range	-65°C to 150°C
Lead Temperature (Soldering, 10 sec).....	300°C

BURN-IN CIRCUITS



PIN CONFIGURATION



ORDER INFORMATION

LEAD BASED FINISH	TAPE AND REEL	PART MARKING	PACKAGE DESCRIPTION	TEMPERATURE RANGE
RH1021BMH-7	RH1021BMH-7#TR		8-Lead TO-5 Metal Can	-55°C to 125°C
RH1021DMH-7	RH1021DMH-7#TR		8-Lead TO-5 Metal Can	-55°C to 125°C

Contact the factory for parts specified with wider operating temperature ranges.

[Tape and reel specifications.](#)

TABLE 1: ELECTRICAL CHARACTERISTICS (Preirradiation) (Note 9)

SYMBOL	PARAMETER	CONDITIONS	NOTES	T _A = 25°C			SUB-GROUP	-55°C ≤ T _A ≤ 125°C			SUB-GROUP	UNITS
				MIN	TYP	MAX		MIN	TYP	MAX		
V _{OUT}	Output Voltage		1	6.95		7.05	1					V
TCV _{OUT}	Output Voltage Temperature Coefficient	RH1021BM-7 RH1021DM-7	2 2						5 20		2, 3 2, 3	ppm/°C ppm/°C
$\frac{\Delta V_{OUT}}{\Delta V_{IN}}$	Line Regulation	8.5V ≤ V _{IN} ≤ 12V	3			4	1			8	2, 3	ppm/V
		12V ≤ V _{IN} ≤ 40V	3			2	1			4	2, 3	ppm/V
$\frac{\Delta V_{OUT}}{\Delta I_{OUT}}$	Load Regulation (Sourcing Current)	0 ≤ I _{OUT} ≤ 10mA	3			25	1			40	2, 3	ppm/mA
	Load Regulation (Shunt Mode)	1.2mA ≤ I _{OUT} ≤ 10mA	3, 4			100	1			150	2, 3	ppm/mA
I _S	Supply Current (Series Mode)					1.2	1			1.5	2, 3	mA
I _{MIN}	Minimum Current (Shunt Mode)	V _{IN} Is Open				1.0	1	0.3		1.2	2, 3	mA
	Output Voltage Noise	0.1Hz ≤ f ≤ 10Hz	5		4							μV _{P-P}
		10Hz ≤ f ≤ 1kHz	5			4	4					μV _{RMS}
	Long-Term Stability of V _{OUT}	ΔT = 1000 Hrs Noncumulative	6		7							ppm
	Temperature Hysteresis of V _{OUT}	ΔT = ±25°C			3							ppm

TABLE 1A: ELECTRICAL CHARACTERISTICS (Postirradiation) (Note 7, 11)

SYMBOL	PARAMETER	CONDITIONS	NOTES	10Krad(Si)		20Krad(Si)		50Krad(Si)		100Krad(Si)		200Krad(Si)		UNITS
				MIN	MAX	MIN	MAX	MIN	MAX	MIN	MAX	MIN	MAX	
V_{OUT}	Output Voltage		1	6.948	7.052	6.945	7.055	6.942	7.058	6.937	7.063	6.93	7.07	V
TCV_{OUT}	Output Voltage Temperature Coefficient	RH1021BM-7	2		5		6		8		10		12	ppm/°C
		RH1021DM-7	2		20		21		23		25		28	ppm/°C
$\frac{\Delta V_{OUT}}{\Delta V_{IN}}$	Line Regulation	$8.5V \leq V_{IN} \leq 12V$	3		4		4		4.5		5		6	ppm/V
		$12V \leq V_{IN} \leq 40V$	3		2		2		2		2		3	ppm/V
$\frac{\Delta V_{OUT}}{\Delta I_{OUT}}$	Load Regulation (Sourcing Current)	$0 \leq I_{OUT} \leq 10mA$	3, 8		25		25		25		25		25	ppm/mA
	Load Regulation (Shunt Mode)	$1.2mA \leq I_{OUT} \leq 10mA$	3, 4		100		100		100		100		150	ppm/mA
I_{MIN}	Minimum Current (Shunt Mode)	V_{IN} is Open			1.0		1.0		1.0		1.0		1.0	mA
I_S	Supply Current (Series Mode)				1.2		1.2		1.2		1.2		1.2	mA

Note 1: Output voltage is measured immediately after turn-on. Changes due to chip warm-up are typically less than 0.005%.

Note 2: Temperature coefficient is measured by dividing the change in output voltage over the temperature range by the change in temperature. Separate tests are done for hot and cold; T_{MIN} to 25°C and 25°C to T_{MAX} . Incremental slope is also measured at 25°C.

Note 3: Line and load regulation are measured on a pulse basis. Output changes due to die temperature change must be taken into account separately. Package thermal resistance is 150°C/W for the TO-5 (H) package.

Note 4: Shunt mode regulation is measured with the input open. With the input connected, shunt mode current can be reduced to 0mA. Load regulation will remain the same.

Note 5: RMS noise is measured with a 2-pole highpass filter at 10Hz and a 2-pole lowpass filter at 1kHz. The resulting output is full wave rectified and then integrated for a fixed period, making the final reading an average as opposed to RMS. Correction factors are used to convert from average to RMS and to correct for the nonideal bandpass of the filters. Peak-to-peak noise is measured with a single highpass filter at 0.1Hz and a 2-pole lowpass filter at 10Hz. The unit is enclosed in a still-air environment to eliminate thermocouple effects on the leads. Test time is 10 seconds.

Note 6: Consult factory for units with long term stability data.

Note 7: $V_{IN} = 12V$, $I_{OUT} = 0$, $T_A = 25^\circ C$, unless otherwise noted.

Note 8: $I_{OUT(MAX)}$ (Sourcing) is 5mA for exposures greater than 100Krad (Si).

Note 9: $V_{IN} = 12V$, $I_{OUT} = 0$, unless otherwise noted.

Note 10: Absolute Maximum Ratings are those values beyond which the life of a device may be impaired.

Note 11: Device is characterized at 10Krad, 20Krad, 50Krad, 100Krad and 200Krad, and is production tested at 100Krad only.

TABLE 2: ELECTRICAL TEST REQUIREMENTS

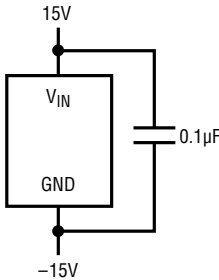
MIL-STD-38535 TEST REQUIREMENTS	SUBGROUP
Final Electrical Test Requirements	1 *, 2, 3, 4
Group A Test Requirements	1, 2, 3, 4
Group C End Point Electrical Parameters	1, 2, 3
Group D End Point Electrical Parameters	1, 2, 3
Group E End Point Electrical Parameters	1

*PDA Applies to subgroup 1. See PDA Test Notes.

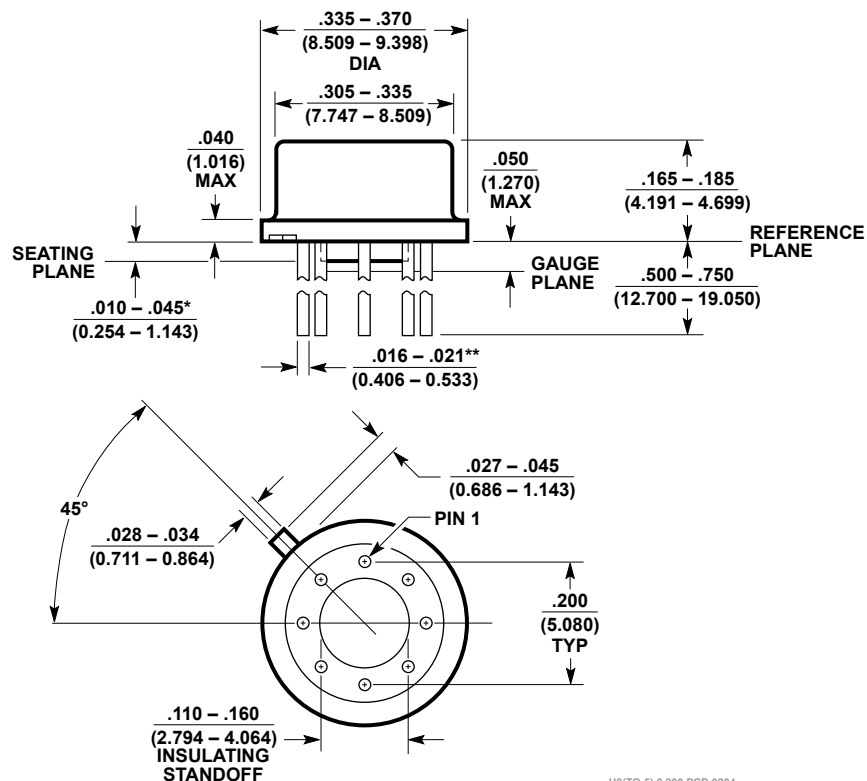
PDA Test Notes

The PDA is specified as 5% based on failures from group A, subgroup 1, tests after cooldown as the final electrical test in accordance with method 5004 of MIL-STD-883. The verified failures of group A, subgroup 1, after burn-in divided by the total number of devices submitted for burn-in in that lot shall be used to determine the percent for the lot.
Linear Technology Corporation reserves the right to test to tighter limits than those given.

TOTAL DOSE BIAS CIRCUIT



PACKAGE OUTLINE DRAWING



H8(TO-5) 0.200 PCD 0204

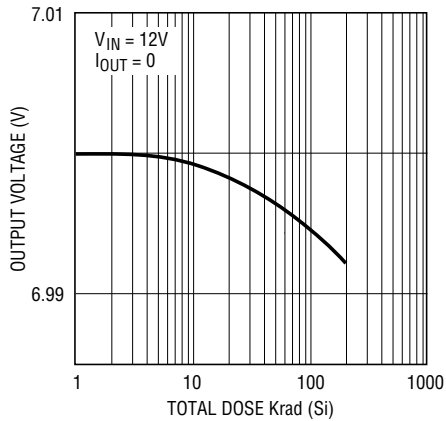
*LEAD DIAMETER IS UNCONTROLLED BETWEEN THE REFERENCE PLANE AND THE SEATING PLANE

**FOR SOLDER DIP LEAD FINISH, LEAD DIAMETER IS $\frac{.016 - .024}{(0.406 - 0.610)}$

H Package
8-Lead TO-5 Metal Can (.200 Inch PCD)
(Reference LTC DWG # 05-08-1320)

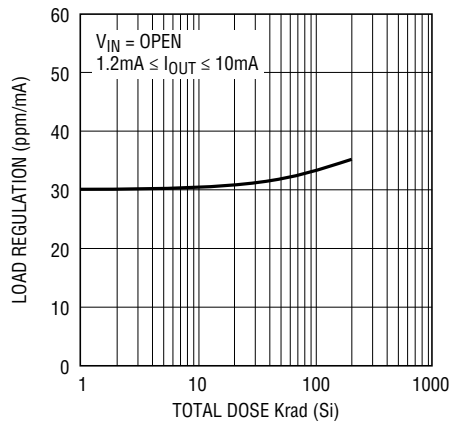
TYPICAL PERFORMANCE CHARACTERISTICS

Output Voltage



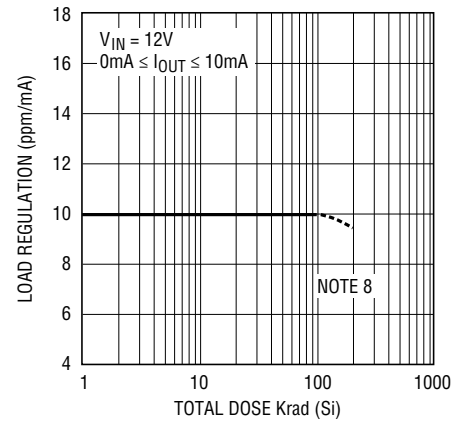
RH1021-7 G01

Load Regulation (Shunt Mode)



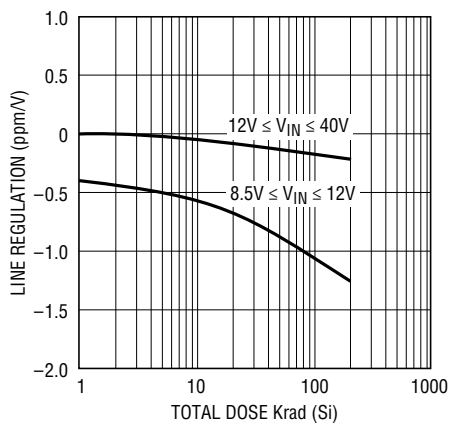
RH1021-7 G02

Load Regulation (Sourcing)



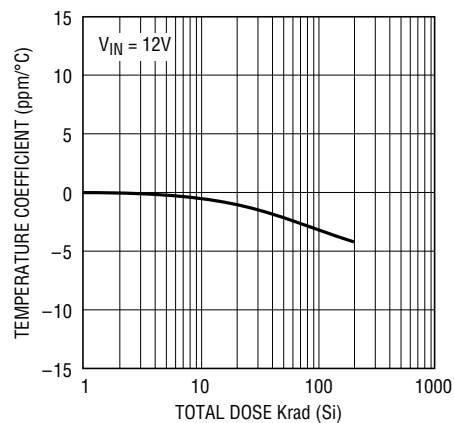
RH1021-7 G03

Line Regulation



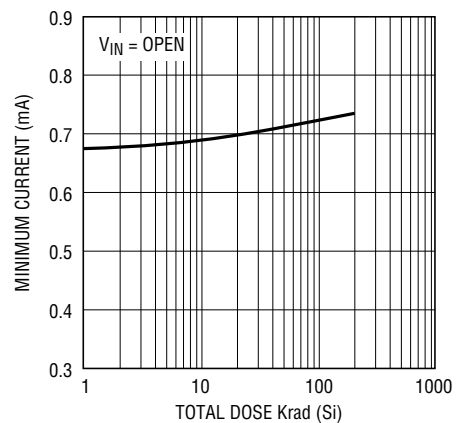
RH1021-7 G04

Temperature Coefficient



RH1021-7 G05

Minimum Current (Shunt Mode)



RH1021-7 G06

REVISION HISTORY (Revision history begins at Rev F)

REV	DATE	DESCRIPTION	PAGE NUMBER
F	10/18	Maximum Junction Temperature added.	1
G	12/25	Changes to Table 1A: Electrical Characteristics	3
		Changes to Table 2: Electrical Test Requirements	4
		Added Package Outline Drawing	5