

[illegible]

J2

TF13BA-6S-0.4SH

1V8_S

C18
1uF
10V

1 2 3 4 5 6

1 I2C1_SDA

2 I2C1_SCL

3 TEMP1_PDB

4 TEMP1_INT

5

6

I2C ADDRESS: 0X82

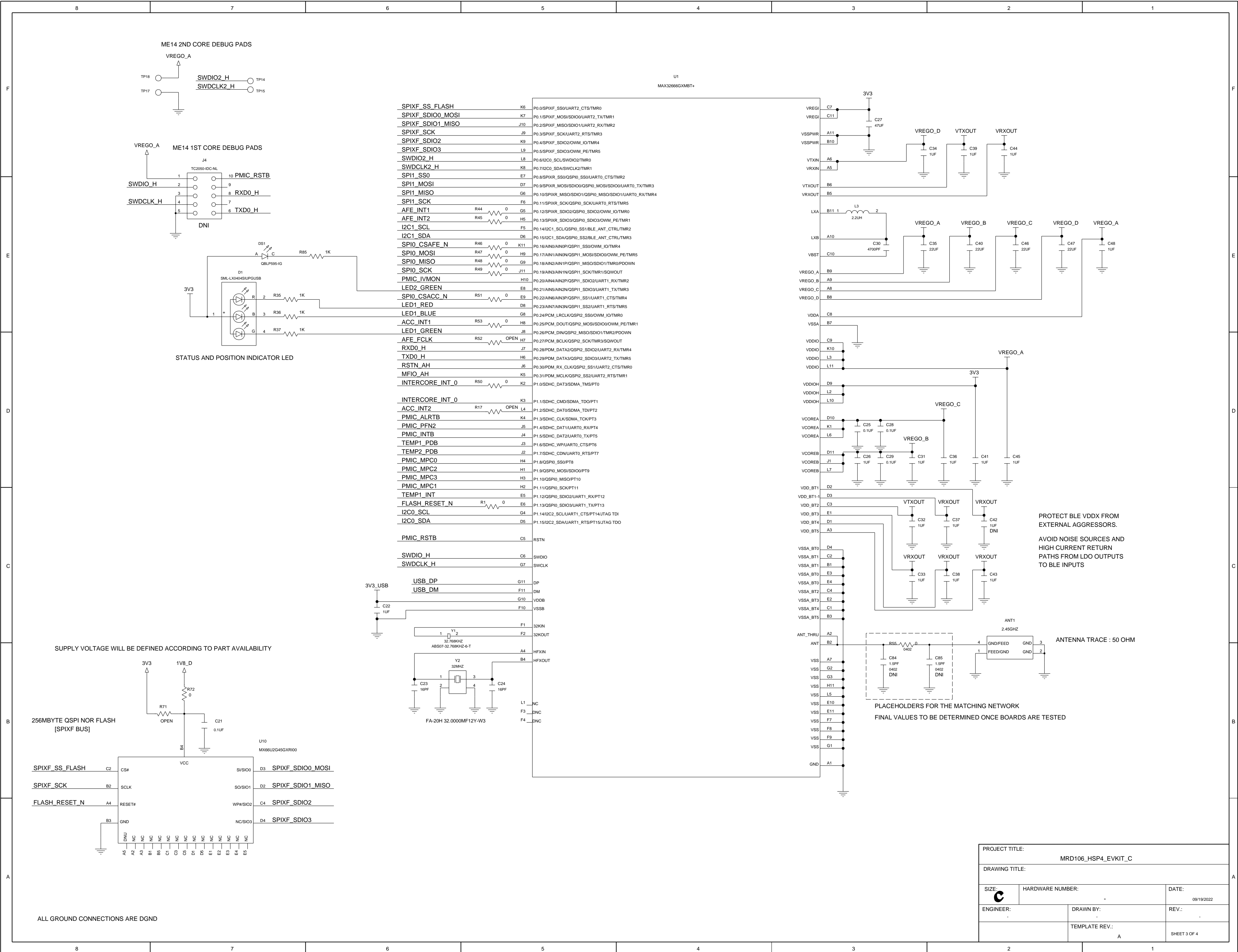
I2C PULL UPS IN PMIC SCHEMATIC

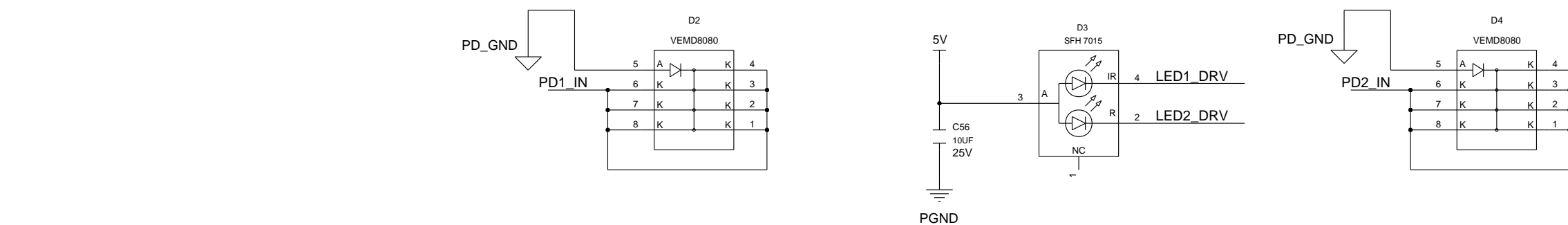
I2C ADDRESS:0X80

I2C PULL UPS IN PMIC SCHEMATIC

[illegible]

PROJECT TITLE:			MRD106_HSP4_EVKIT_C		
DRAWING TITLE:					
SIZE: C	HARDWARE NUMBER:				DATE: 09/19/2022
ENGINEER:		DRAWN BY:		REV.:	
		TEMPLATE REV.: A		SHEET 2 OF 4	





FOR TWO/THREE ELECTRODE CONFIGURATION (ECG+RESP) POPULATE R78/R77 WITH ZERO OHM SHORT, AND REPLACE C52 AND C53 WITH 1NF. THIS KEEPS THE INPUT IMPEDANCE ON THE ECG FRONT END HIGH ENOUGH TO PASS THE IEC 60601-2-47 AMBULATORY ECG MONITORING STANDARD (INPUT IMPEDANCE)

PROJECT TITLE:			MRD106_HSP4_EVKIT_C		
DRAWING TITLE:					
SIZE: C	HARDWARE NUMBER:				DATE: 09/19/2022
ENGINEER:		DRAWN BY:		REV.:	
		TEMPLATE REV.: A		SHEET 4 OF 4	