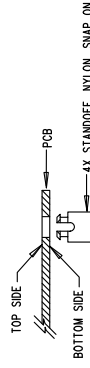


REVISION HISTORY			
ECO	REV	DESCRIPTION	APP. ENG. DATE
-	2	PRODUCTION	H.ZHOU 2-21-18

NOTES: UNLESS OTHERWISE SPECIFIED

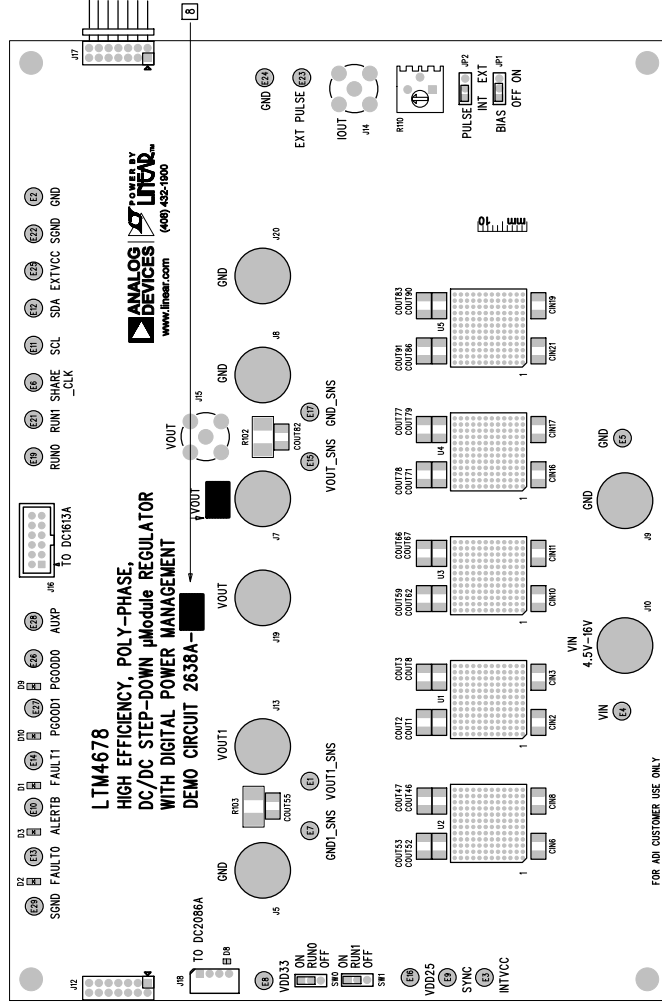
1. WORKMANSHIP SHALL BE IN ACCORDANCE WITH PC-A-600.
2. ASSEMBLY PROCESS SHALL INCLUDE REFLOW ON BOTH SIDE SMD.
3. MAXIMUM SOLDER TEMPERATURE IS 240 DEGREES CELSIUS.
4. PARTS TO OMT WILL BE SPECIFIED ON THE BILL OF MATERIALS.
5. LOCATIONS OF OMITTED PARTS SHALL BE FREE OF SOLDER.
6. MASK THE SOLDER STENCIL WHERE SMT PARTS ARE OMITTED.
7. INSTALL SHUNTS AS SHOWN ON ASSY DRAWING.
8. DEPENDANTIZE BOARDS AFTER ASSEMBLY AND ROUTE-OUT THE BREAKOUT TABS ON FOUR SIDES OF THE BOARD EDGE.
9. DO NOT APPLY ANY KIND OF ASSEMBLY STAMP OR QA STAMP TO ANY BOARD.
10. INSTALL 4 STANDOFFS AT 4 LOCATIONS AS SHOWN BELOW:




**8. SEE THE BILL OF MATERIALS TO MARK THE APPROPRIATE ASSEMBLY TYPE WITH BLACK PERMANENT MARKER.**

## BOARD ASSEMBLY

ASSY	VOUT0
- A	1V/100A
- B	1V/150A
- C	1V/200A
- D	1V/250A



**FOR ADI CUSTOMER USE ONLY**

APPROVALS	 <b>ANALOG DEVICES</b> FOR OUR CUSTOMER USE ONLY 1-800-329-0066 FAX 1-508-329-0060 WWW.ANALOG-DEVICES.COM WWW.LINER.COM	
PCB DES.	HZ	
APP ENG.	H.ZHOU	
TITLE: TOP ASSEMBLY DRAWING HIGH EFFICIENCY, POLY-PHASE, DC/DC STEP-DOWN <i>absolute</i> REGULATOR WITH DIGITAL POWER MANAGEMENT		
SIZE	IC NO. LT1M4678EY	REV. 2
N/A	DEMO CIRCUIT 2638A-A/B/C/D	REV. 1, 2
EVALUATE: DC2638A/REF		SCALE = NONE