

LTC3388EMSE-1 LTC3388EMSE-3

20V High Efficiency Nano-power Step-Down Regulator

DESCRIPTION

Demonstration Circuit 1658A is a 20V High Efficiency Nanopower Step-Down Regulator featuring the LTC3388-1/LTC3388-3. The LTC3388 is an ultralow quiescent current power supply designed to regulate the output voltage by means of a nanopower high efficiency synchronous buck regulator. The input current is only 720nA typical at no load while maintaining output voltage regulation, capable of supplying 50mA of load current. The LTC3388-1/LTC3388-3 also incorporates an accurate undervoltage lockout feature to disable the converter and maintain a low quiescent current state when the input voltage falls below 2.3V. In regulation, the LTC3388-1/LTC3388-3 enter a sleep state in which both input and output quiescent currents are minimal. The buck converter turns on and off as needed to maintain regulation. An additional standby mode disables the buck switching while the

output is in regulation for short duration loads requiring low ripple.

Four output voltages are pin selectable with up to 50mA of continuous output current. A power good comparator produces a logic high referenced to VOUT on the PGOOD pin when the converter reaches the programmed VOUT, signaling that the output is in regulation.

The LTC3388EMSE-1/LTC3388EMSE-3 are available in a 10-lead (3mm × 3mm) MSE surface mount package with exposed pad.

LT, LTC, LTM, LT, Burst Mode, OPTI-LOOP, Over-The-Top and PolyPhase are registered trademarks of Linear Technology Corporation. Adaptive Power, C-Load, DirectSense, Easy Drive, FilterCAD, Hot Swap, LinearView, μ Module, Micropower SwitcherCAD, Multimode Dimming, No Latency $\Delta\Sigma$, No Latency Delta-Sigma, No R_{SENSE} , Operational Filter, PanelProtect, PowerPath, PowerSOT, SmartStart, SoftSpan, Stage Shedding, SwitcherCAD, ThinSOT, UltraFast and VLD0 are trademarks of Linear Technology Corporation. Other product names may be trademarks of the companies that manufacture the products.

TABLE 1
PERFORMANCE SUMMARY LTC3388EMSE-1 Specifications are at $T_A = 25^\circ\text{C}$

SYMBOL	PARAMETER	CONDITIONS	MIN	MAX	UNITS
VIN	Input Voltage Range		2.7	20.0	V
VOUT 1.2V	Output Voltage Range	D0 = 0, D1=0	1.14	to 1.26	V
VOUT 1.5V	Output Voltage Range	D0 = 1, D1=0	1.44	to 1.56	V
VOUT 1.8V	Output Voltage Range	D0 = 0, D1=1	1.737	to 1.863	V
VOUT 2.5V	Output Voltage Range	D0 = 1, D1=1	2.40	to 2.60	V

PERFORMANCE SUMMARY LTC3388EMSE-3 Specifications are at $T_A = 25^\circ\text{C}$

SYMBOL	PARAMETER	CONDITIONS	MIN	MAX	UNITS
VIN	Input Voltage Range		2.7	20.0	V
VOUT 2.8V	Output Voltage Range	D0 = 0, D1=0	2.688	to 2.912	V
VOUT 3.0V	Output Voltage Range	D0 = 1, D1=0	2.895	to 3.105	V
VOUT 3.3V	Output Voltage Range	D0 = 0, D1=1	3.201	to 3.399	V
VOUT 5.0V	Output Voltage Range	D0 = 1, D1=1	4.82	to 5.18	V

OPERATING PRINCIPLE

Refer to the block diagram within the LTC3388-1/-3 data sheet for its operating principle.

The LTC3388 is an ultralow quiescent current power supply designed to regulate the output voltage by means of a nanopower high efficiency synchronous buck regulator. See Figure 1 for the LTC3388-1 50mA efficiency versus input voltage curves for the four output voltage settings. Figure 2 is the efficiency curves for the LTC3388-3. The input current is only 720nA typical at no load while maintaining output voltage regulation capable of supplying 50mA of load current.

The LTC3388-1/LTC3388-3 also incorporates an accurate undervoltage lockout feature to disable the converter and maintain a low quiescent current (approximately 400nA), state when the input voltage falls below 2.3V. When the voltage on V_{IN} rises above the UVLO rising threshold, the buck converter is enabled and charge is transferred from the input capacitor to the output capacitor.

The buck regulator uses a hysteretic voltage algorithm to control the output through internal feedback from the V_{OUT} sense pin. The buck converter charges the output capacitor through an inductor to a value slightly higher than the regulation point. It does this by ramping the inductor current up to 150mA through an internal PMOS switch and then ramping down to 0mA through an internal NMOS switch. When the buck converter brings the output voltage into regulation, the LTC3388-1/LTC3388-3 enter a sleep state in which both input and output quiescent currents are minimal. The buck converter turns on and off as needed to maintain regulation.

Two logic pins, EN and STBY, determine the operating mode of the LTC3388-1/LTC3388-3. When EN is high and STBY is low the synchronous buck converter is enabled and will regulate the output if the input is above the programmed output voltage and above the UVLO threshold. If EN is low, the buck converter circuitry is powered to save quiescent current. The internal rail generation circuits are kept alive and the voltages at V_{IN2} and CAP are maintained.

While enabled, the LTC3388-1/LTC3388-3 can be placed in standby mode by bringing STBY high. In standby mode the buck converter is disabled, eliminating the quiescent current used to run the buck circuitry. The PGOOD and sleep comparators are kept alive to maintain the state of the PGOOD pin. The sleep comparator has a lower quiescent current than the PGOOD comparator and when the LTC3388-1/LTC3388-3 is in sleep mode, the PGOOD comparator is shut down and PGOOD is held high. If STBY is driven high with EN low, it will be ignored and will remain in shutdown.

Four output voltages are available by tying the output select pins, D0 and D1, to GND of V_{IN2} . Table 1 shows the four D0/D1 codes and their corresponding output voltages with up to 50mA of continuous output current. The internal feedback network draws a small amount of current from VOUT.

A power good comparator produces a logic high referenced to VOUT on the PGOOD pin when the converter reaches the programmed VOUT, signaling that the output is in regulation. The PGOOD pin will remain Hi-Z until VOUT falls below 92% of the desired regulation voltage. If PGOOD is high and V_{IN} falls below the UVLO falling threshold, PGOOD will remain high until VOUT falls to 92% of the desired regulation point.

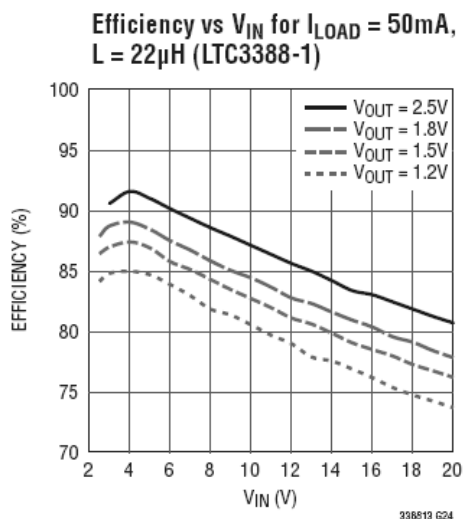


Figure 1

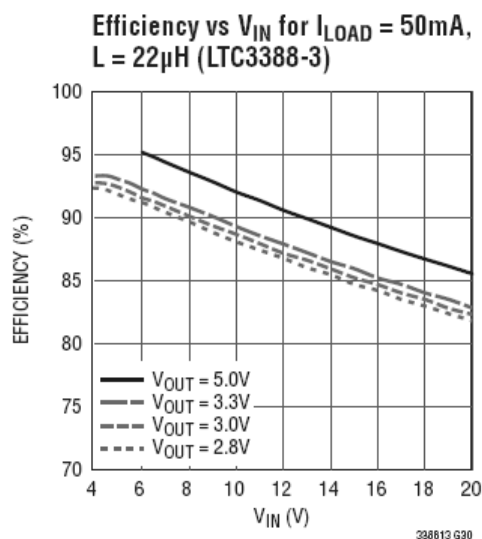


Figure 2

QUICK START PROCEDURE

Using short twisted pair leads for any power connections, with all loads and power supplies off, refer to Figure 1 for the proper measurement and equipment setup.

Follow the procedure below:

1. Initial Jumper, PS and LOAD 1 settings:

JP1 = 0

JP2 = 0

JP3 = EN

JP4 = ON

JP5 = 1

PS1 = OFF

LOAD1 = OFF

2. Turn on PS1 and slowly increase voltage to 2.0V while monitoring the input current. If the current remains less than 5mA, increase PS1 to 6.0V.
3. Set LOAD1 to 50mA. Verify voltage on VOUT is within the VOUT 1.2V/2.8V range in Table 1.

- Verify that the output ripple voltage is between 40mV and 90mV. Verify that PGOOD is high (VOUT).
- Set JP1 to 1. Set LOAD1 to 50mA. Verify voltage on VOUT is within the VOUT 1.5V/3.0V range in Table 1. Verify that the output ripple voltage is between 40mV and 90mV.
 - Set JP1 to 0 and JP2 to 1. Set LOAD1 to 50mA. Verify voltage on VOUT is within the VOUT 1.8V/3.3V range in Table 1. Verify that the output ripple voltage is between 50mV and 90mV.
 - Set JP1 to 1. Set LOAD1 to 50mA. Verify voltage on VOUT is within the VOUT 2.5V/5.0V range in Table 1. Verify that the output ripple voltage is between 50mV and 110mV.
 - Turn off LOAD1. Set JP4 to STBY. Monitor PGOOD as VOUT decays. PGOOD will go low when VOUT is approximately 2.25V/4.5V.
 - Set JP4 to ON. Set LOAD1 to 50mA. Verify voltage on VOUT is within the VOUT 2.5V/5.0V range in Table 1 and that PGOOD is high.
 - Turn off PS1 and LOAD1.

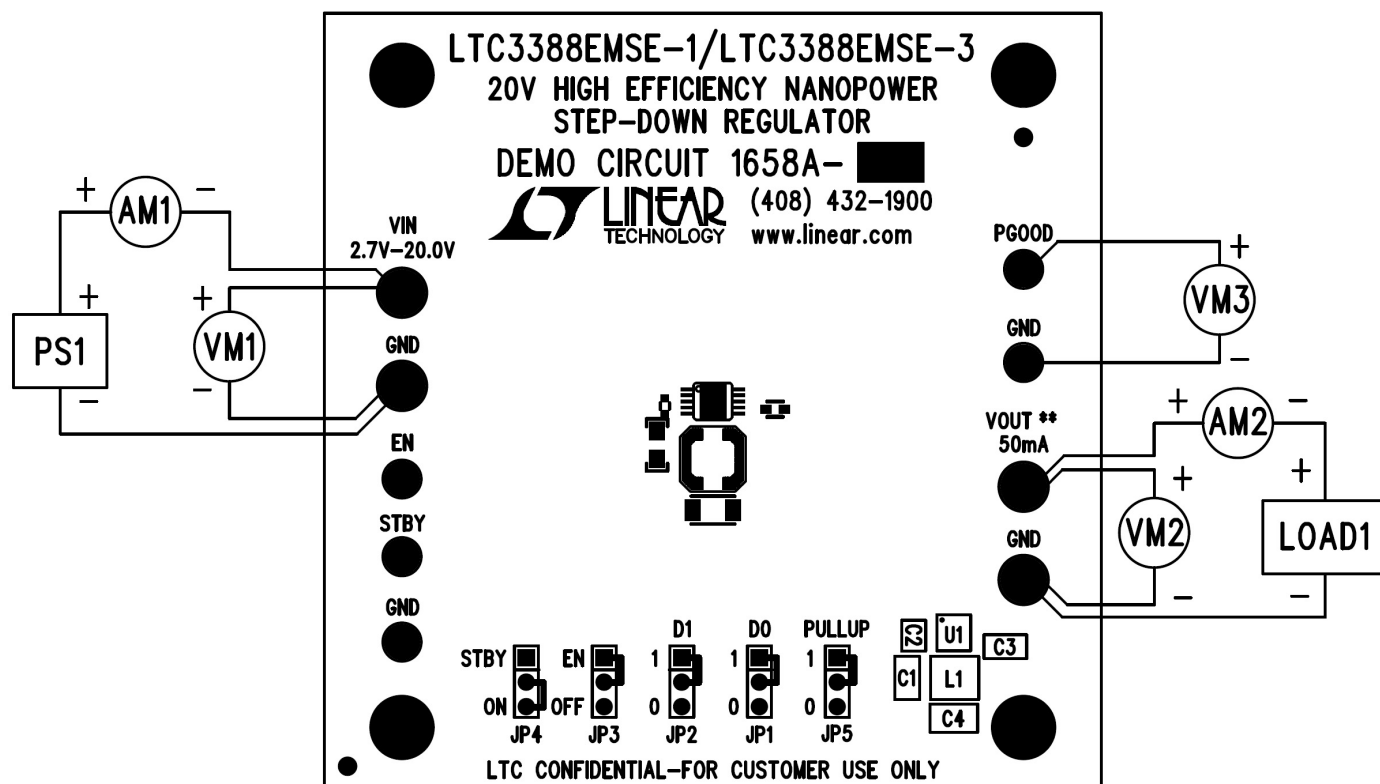
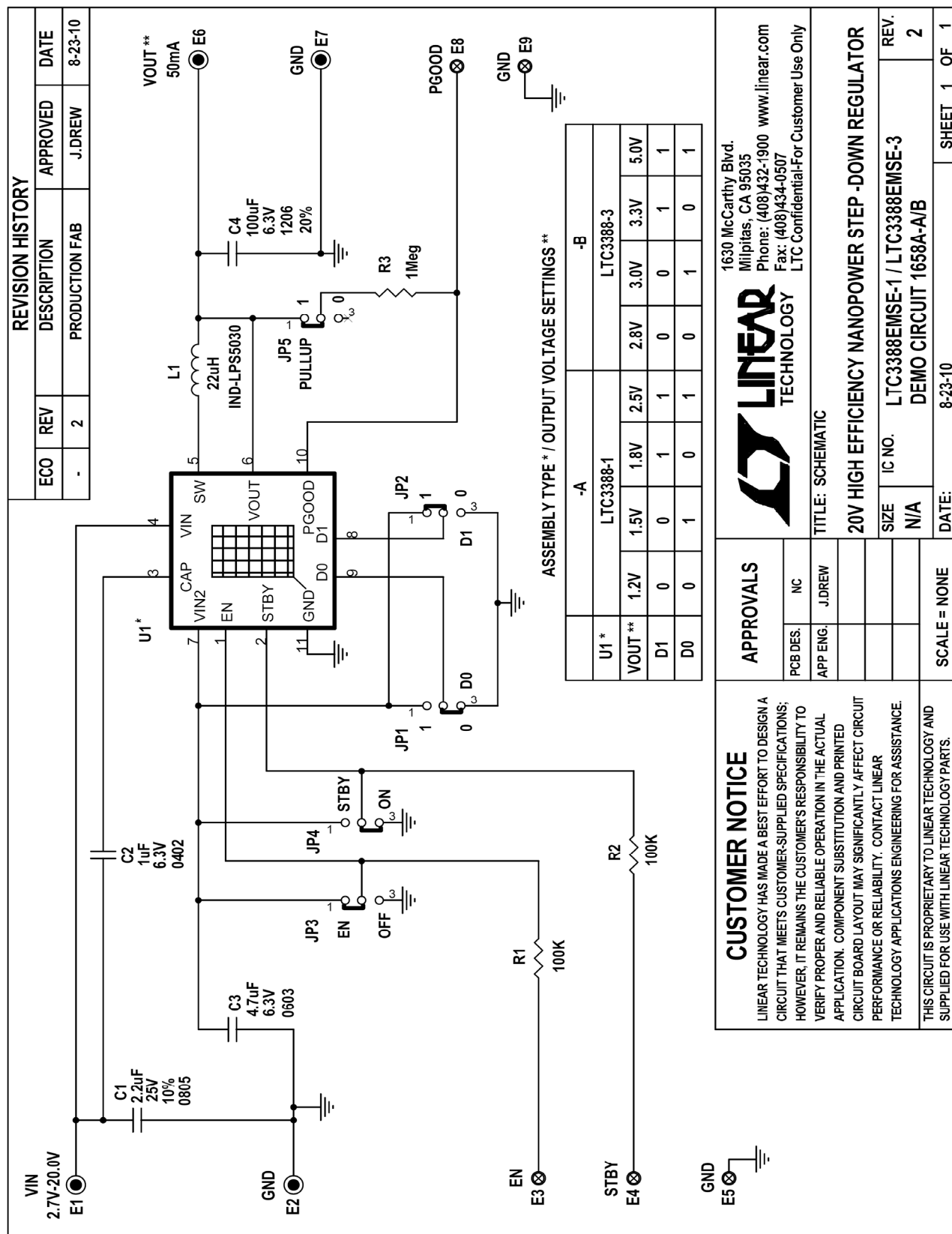


Figure 1. Proper Measurement Equipment Setup



Item	Qty	Reference - Des	Part Description	Manufacturer, Part #
REQUIRED CIRCUIT COMPONENTS:				
1	1	C1	CAP, CHIP, X5R, 2.2uF, 10%, 25V, 0805	MURATA, GRM21BR71E225KA73L
2	1	C2	CAP, CHIP, X5R, 1uF, 10%, 6.3V, 0402	TDK, C1005X5R0J105KT
3	1	C3	CAP, CHIP, X5R, 4.7uF, 10%, 6.3V, 0603	TDK, C1608X5R0J475KT
4	1	C4	CAP, CHIP, X5R, 100uF, 20%, 6.3V, 1206	Taiyo Yuden, JMK316BJ107ML-T
5	1	L1	INDUCTOR, 22uH, 0.70A, 170mΩ, 5mm x 5mm	COILCRAFT, LPS5030-223MLC
6	2	R1,R2	RES,CHIP,100K,1/16W,1%,0402	VISHAY, CRCW0402100KFED
7	1	R3	RES,CHIP,1MEG,1/16W,1%,0402	VISHAY, CRCW04021M00FKED
8	1	U1 (DC1658A-A)	20V HIGH EFFICIENCY NANOPOWER STEP -DOWN REGULATOR	LINEAR TECH., LTC3388EMSE-1
	1	U1 (DC1658A-B)	20V HIGH EFFICIENCY NANOPOWER STEP -DOWN REGULATOR	LINEAR TECH., LTC3388EMSE-3
HARDWARE FOR DEMO BOARD ONLY:				
1	4	E1,E2,E6,E7	TURRET, 0.09 DIA	MILL-MAX, 2501-2
2	5	E3-E5,E8,E9	TURRET, 0.061 DIA	MILL-MAX, 2308-2
3	5	JP1-JP5	HEADER, 3 PINS, 2mm	SAMTEC, TMM-103-02-L-S
4	5	JP1-JP5	SHUNT 2MM	SAMTEC, 2SN-BK-G

Bill of Materials