


REVISIONS			
REV	DESCRIPTION	DATE	APPROVED
A	INITIAL RELEASE	19NOV21	A. UY
B	ECR-111942	24MAR23	A. UY
C	ECR-115064	28JUL23	A. UY

DRILL CHART: TOP to BOTTOM				
ALL UNITS ARE IN MILS				
FIGURE	SIZE	PLATED	QTY	TOLERANCE/NOTES
•	10.0	PLATED	173	DIA MAX
◦	25.0	PLATED	3	
◦	35.0	PLATED	4	
◦	45.0	PLATED	32	SEE NOTE 15
A	80.0	NON-PLATED	2	
B	160.0	NON-PLATED	2	

PRIMARY SIDE			ANALOG DEVICES					
UNLESS OTHERWISE SPECIFIED DIMENSIONS ARE IN INCHES TOLERANCES DECIMALS   FRACTIONS   ANGLES .XX   -.010   --1/32   -- 2 .XXX   -.005 .XXXX   -.0050	APPROVAL		DATE		<div> ANALOG DEVICES</div> <div>WWM DIVISION 804 WOBURN STREET WILMINGTON, MA 01887</div>			
	TEMPLATE ENGINEER N/A		N/A					
	HARDWARE SERVICES M. VALE		19NOV21					
	HARDWARE SYSTEMS N/A		N/A					
MATERIAL	TEST ENGINEER N/A		N/A		TITLE  FABRICATION EVAL - CN0583 - SOM CUSTOMER EVALUATION Z			
	COMPONENT ENGINEER N. CATALAN		13JUL23					
	TEST PROCESS N/A		N/A					
	HARDWARE RELEASE K. JABATAN		19NOV21					
FINISH	DESIGNER M. VALE		19NOV21		SIZE	FSCM NO	DRAWING NUMBER	REV
	PTD ENGINEER A. UY		19NOV21		C	24355	09-068743	C
	CHECKER N/A		N/A					
DO NOT SCALE DWG					SCALE   1/1			SHEET   1 OF 2

4

3

2

1

D

C

B

A

SPECIFICATIONS:

ROHS COMPLIANCE NOTE: HOMOGENOUS MATERIALS IN THIS BOARD SHALL BE COMPLIANT THE EU RoHS DIRECTIVE 2002/95/EC

MATERIALS; ALL LAMINATES AND BONDING MATERIALS SHOULD BE SELECTED FROM IPC-4101 OR IPC-4103, MINIMUM Tg>170degC, Td>300degC, U.L. RATING OF 94 V-0

MATERIAL FAMILY; ISOLA 370HR

CLADDING; EXTERNAL LAYERS .5 OZ. COPPER, OVERPLATE TO 1.5 OZ. INTERNAL PLANE LAYERS 1 OZ. COPPER.

NOTE: IF THE LAYER STACKUP CONFLICTS WITH THE ABOVE CLADDING SPECIFICATIONS THEN THE LAYER STACKUP SHALL TAKE PRECEDENCE.

SOLDER MASK; SHALL BE LIQUID PHOTOIMAGEABLE (LPI) APPLIED ON BOTH SIDES OVER BARE COPPER OR GOLD AND SHALL MEET IPC-SM-840 (LATEST REV.) CLASS 3. COLOR GREEN.

SILK SCREEN; SHALL BE PERMANENT NON-CONDUCTIVE EPOXY INK, COLOR: WHITE SYNTHETIC INKJET PRINTING ALLOWED FOR DENSE BOARDS, COLOR: WHITE

SURFACE FINISH; ENIG (ELECTROLESS NICKEL/IMMERSION GOLD) PER IPC-4552 LATEST REVISION

INTENTIONAL SHORTS; IF SUPPLIED DATA INCLUDES A FILE "READ\_ME.2", THEN INTENTIONAL NET SHORTS EXIST. CUSTOMER REVIEW AND APPROVAL IS REQUIRED IF SUPPLIED DATA REPORTS ANY CONDITION THAT DOES NOT MATCH "READ\_ME.2" FILE PROVIDED.

TEST REQUIREMENTS; 100% NETLIST ELECTRICAL VERIFICATION USING CUSTOMER SUPPLIED IPC-D-356 NETLIST FOR OPENS AND SHORTS WHEN "GERBER DATA" IS PROVIDED. THIS VERIFICATION ALSO REQUIRED FOR "ODB++" DATA PER EMBEDDED NETLIST.

4 LAYER STACKUP

NOMINAL FINISHED BOARD THICKNESS 0.062" +/- 10%

PRIMARY SILKSCREEN

PRIMARY SOLDER MASK

PRIMARY SIDE (LAYER 1)

L2\_GND PLANE (LAYER 2)

L3\_PWR PLANE (LAYER 3)

SECONDARY SIDE (LAYER 4)

SECONDARY SOLDER MASK

SECONDARY SILKSCREEN

REQUIREMENTS:

1. REFER TO IPC-6010 SERIES (LATEST REV.), CLASS 2 FOR FABRICATION UNLESS OTHERWISE SPECIFIED.

2. ACCEPTABILITY PER ANALOG DEVICES, INC. SPECIFICATION TST00115, (LATEST REVISION.)

3. MODIFICATIONS TO THE ARTWORK ARE NOT ALLOWED WITHOUT WRITTEN AUTHORIZATION.

4. HOLE PATTERN TOLERANCES FOR UNDIMENSIONED HOLES SHALL BE A DIAMETER OF 0.005 INCHES FROM THEIR TRUE POSITION.

5. PLATED HOLE WALL THICKNESS SHALL NOT BE LESS THAN 0.001 INCH MINIMUM AVERAGE, WITH NO READING LESS THAN .0008 INCH BY CROSS SECTION.

6. HOLE DIAMETERS APPLY AFTER PLATING.

7. FINISHED CONDUCTOR WIDTHS SHALL NOT BE REDUCED FROM THE NOMINAL INDICATED ON THE MASTER PATTERN, BY MORE THAN THE CONDUCTOR THICKNESS.

8. MINIMUM DESIGN LINE WIDTH IS .007 INCH.

9. MINIMUM DESIGN SPACING IS .00578 INCH.

~~10. NON FUNCTIONAL PAD REMOVAL FROM INNER SIGNAL LAYERS MAY BE PERFORMED AFTER CUSTOMER APPROVAL.~~

11. IF PAD SIZES PROVIDED ARE NOT LARGE ENOUGH TO MAINTAIN ANNULAR RING REQUIREMENT, MFR. MAY REQUEST APPROVAL TO TEAR DROP PADS TO MAINTAIN ANNULAR RING. (AT PAD TO TRACE INTERSECTION ONLY AND ELECTRICAL INTEGRITY MUST BE MAINTAINED.)

12. THIEVING MAY BE ADDED TO COMPENSATE FOR LOW COPPER DENSITY AREAS ON THIS DESIGN ONLY AFTER REVIEW AND APPROVAL FROM THE CUSTOMER:

A. THIEVING TO CARD EDGE, FIDUCIALS, NON-PLATED THROUGH HOLES, ALL OTHER FEATURES TO BE 0.200 INCH MINIMUM.

B. THERE SHALL BE NO THIEVING IN ANY AREAS FREE OF SOLDER MASK OR INTERNAL COPPER PLANES.

13. MFR. TO LEGIBLY ETCH OR STAMP/SCREEN WITH PERMANENT NON-CONDUCTIVE INK ON SECONDARY SIDE IN A CLEAR AREA UNLESS OTHERWISE INDICATED;

A. U.L. CODE-FLAMMABILITY RATING

D. MFR LOGO

B. DATE CODE (STAMP).

E. SUCCESSFUL ELECTRICAL TEST.

C. LOT NUMBER

14. REPAIRS PER IPC-7711/21 (LATEST REV.) ARE ALLOWED.

15. NOTE THE 28 CASTELLATED VIA HOLES AROUND THE BOARD EDGES.

CASTELLATED PAD DEFINITION

TOP - RECTANGLE .065 X .075 INCH

INTERNAL (LAYER 2 & 3) - CIRCLE .065 INCH

BOTTOM - RECTANGLE .065 X .085 INCH

.100 INCH

16. BOARDS TO BE SHIPPED IN ARRAY AND KEEP INTACT. PANEL TO BE SUBJECTED TO CUSTOMER'S APPROVAL. PANELED SOLDER PASTE STENCIL SHOULD BE SENT TO THE CUSTOMER.

PRIMARY SIDE

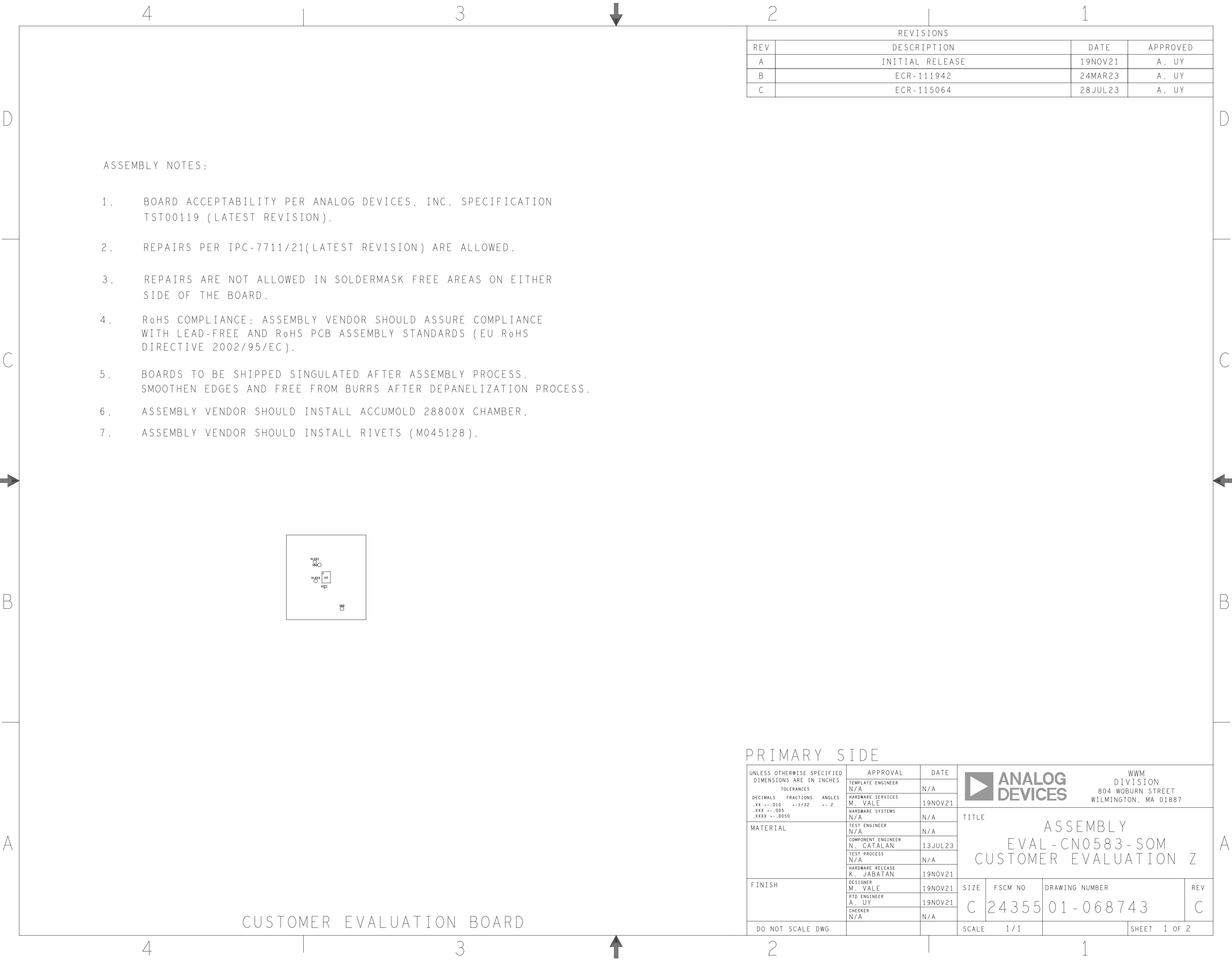
ANALOG DEVICES

WWM DIVISION

804 WOBURN STREET

WILMINGTON, MA 01887

SIZE	FSCM NO	DRAWING NUMBER	REV
C	24355	09-068743	C
SCALE	1 / 1		SHEET 2 OF 2




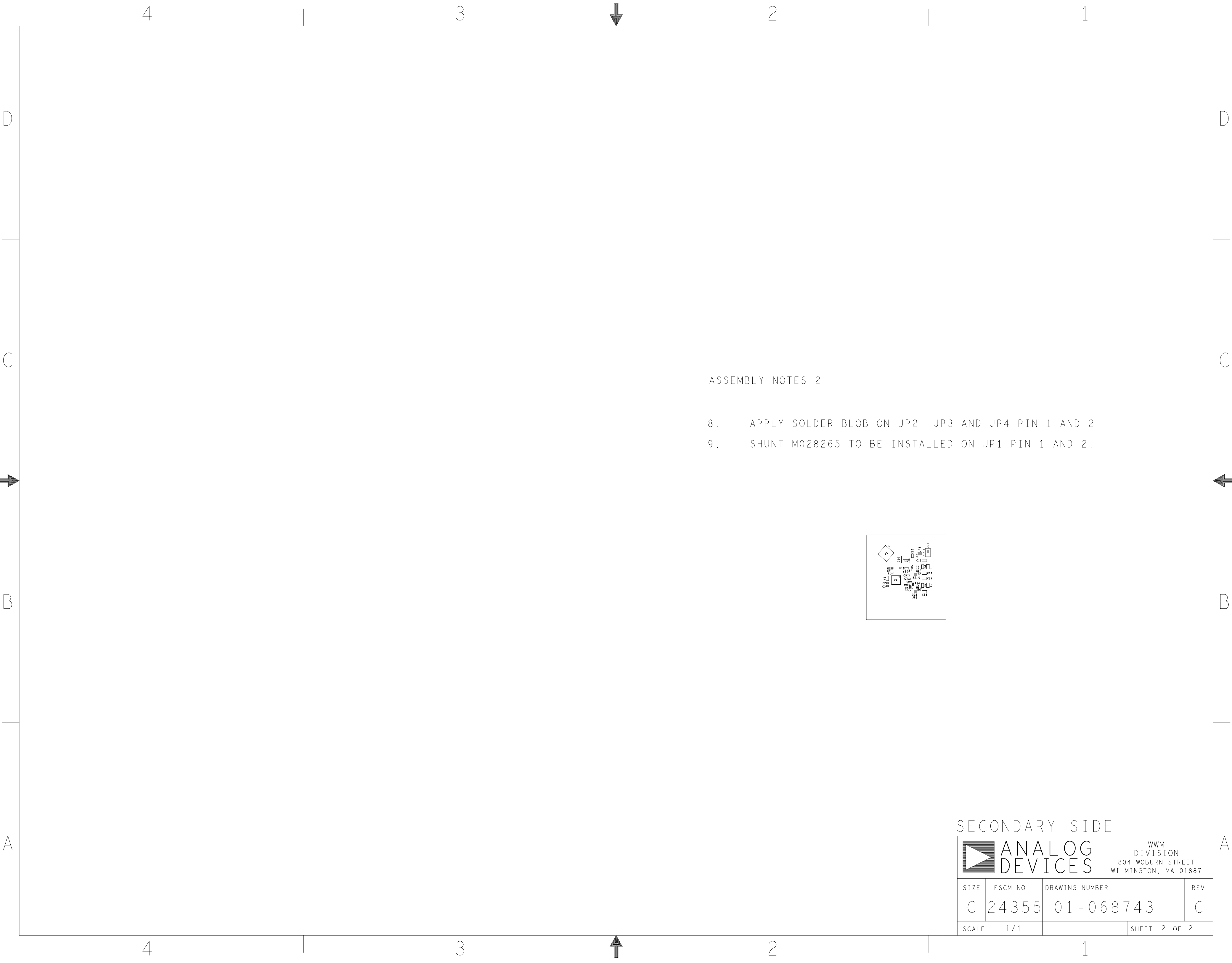
ASSEMBLY NOTES:

- 1. BOARD ACCEPTABILITY PER ANALOG DEVICES, INC. SPECIFICATION TST00119 (LATEST REVISION).
- 2. REPAIRS PER IPC-7711/21(LATEST REVISION) ARE ALLOWED.
- 3. REPAIRS ARE NOT ALLOWED IN SOLDERMASK FREE AREAS ON EITHER SIDE OF THE BOARD.
- 4. RoHS COMPLIANCE: ASSEMBLY VENDOR SHOULD ASSURE COMPLIANCE WITH LEAD-FREE AND RoHS PCB ASSEMBLY STANDARDS (EU RoHS DIRECTIVE 2002/95/EC).
- 5. BOARDS TO BE SHIPPED SINGULATED AFTER ASSEMBLY PROCESS. SMOOTHEN EDGES AND FREE FROM BURRS AFTER DEPANELIZATION PROCESS.
- 6. ASSEMBLY VENDOR SHOULD INSTALL ACCUMOLD 28800X CHAMBER.
- 7. ASSEMBLY VENDOR SHOULD INSTALL RIVETS (M045128).

REVISIONS			
REV	DESCRIPTION	DATE	APPROVED
A	INITIAL RELEASE	19NOV21	A. UY
B	ECR-111942	24MAR23	A. UY
C	ECR-115064	28JUL23	A. UY

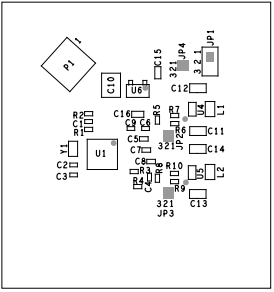
PRIMARY SIDE						
UNLESS OTHERWISE SPECIFIED DIMENSIONS ARE IN INCHES  TOLERANCES  DECIMALS   FRACTIONS   ANGLES .XX   -.010   --1/32   -- 2 .XXX   -.005 .XXXX   -.0050			APPROVAL		DATE	
			TEMPLATE ENGINEER N/A		N/A	
MATERIAL			HARDWARE SERVICES M. VALE		19NOV21	
			HARDWARE SYSTEMS N/A			
			TEST ENGINEER N/A		N/A	
			COMPONENT ENGINEER N. CATALAN		13JUL23	
FINISH			TEST PROCESS N/A		N/A	
			HARDWARE RELEASE K. JABATAN		19NOV21	
			DESIGNER M. VALE		19NOV21	
			PTD ENGINEER A. UY		19NOV21	
			CHECKER N/A		N/A	
DO NOT SCALE DWG						

		ANALOG DEVICES		WWM DIVISION 804 WOBURN STREET WILMINGTON, MA 01887	
TITLE				ASSEMBLY EVAL-CN0583-SOM CUSTOMER EVALUATION Z	
SIZE	FSCM NO	DRAWING NUMBER		REV	
C	24355	01-068743		C	
SCALE   1/1				SHEET   1 OF 2	

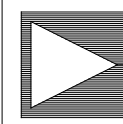


ASSEMBLY NOTES 2

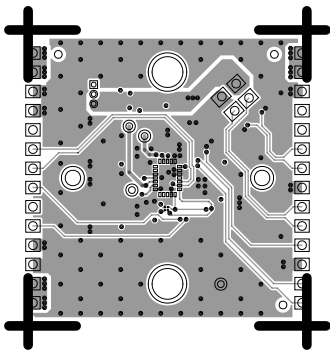
- 8. APPLY SOLDER BLOB ON JP2, JP3 AND JP4 PIN 1 AND 2
- 9. SHUNT M028265 TO BE INSTALLED ON JP1 PIN 1 AND 2.



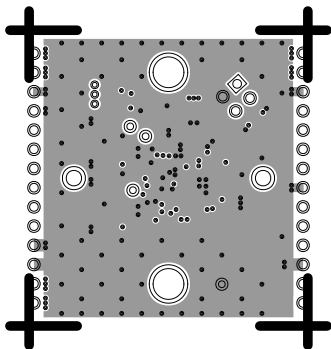
SECONDARY SIDE

<div><div>ANALOG DEVICES</div><div>WWM DIVISION 804 WOBURN STREET WILMINGTON, MA 01887</div></div>			
SIZE	FSCM NO	DRAWING NUMBER	REV
C	24355	01-068743	C
SCALE	1 / 1	SHEET 2 OF 2	

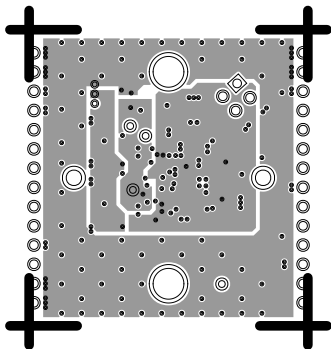
L1 PRIMARY  
08-068743-01  
REV C



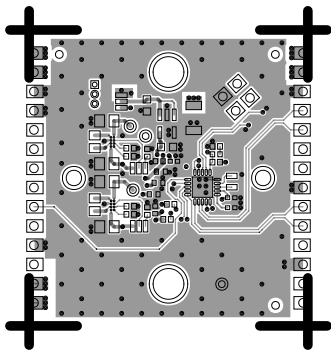
L2 GND  
08-068743-07  
REV C



L3 VCC  
08-068743-08  
REV C

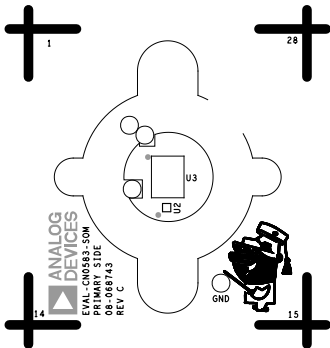


L4 SECONDARY  
08-068743-02  
REV C





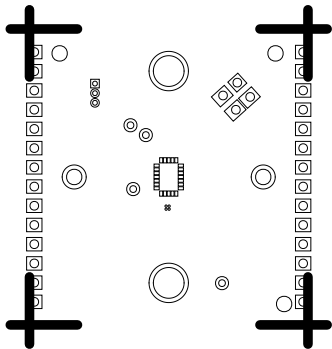
SILKSCREEN PRIMARY  
08-068743-03  
REV C



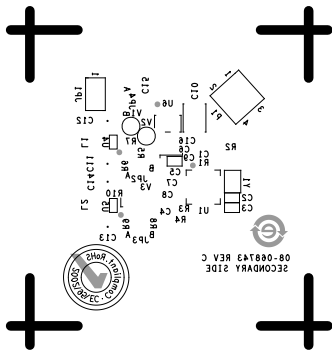
SOLDERMASK PRIMARY

08-068743-04

REV C



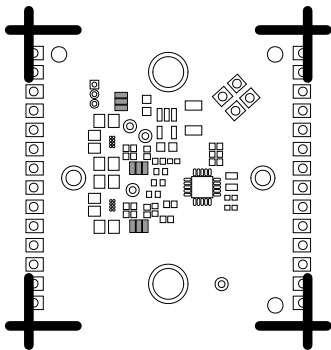
SILKSCREEN SECONDARY  
08-068743-05  
REV C



SOLDERMASK SECONDARY

08-068743-06

REV C



PASTEMASK PRIMARY

08-068743-09

REV C



PASTEMASK SECONDARY

08-068743-10

REV C

