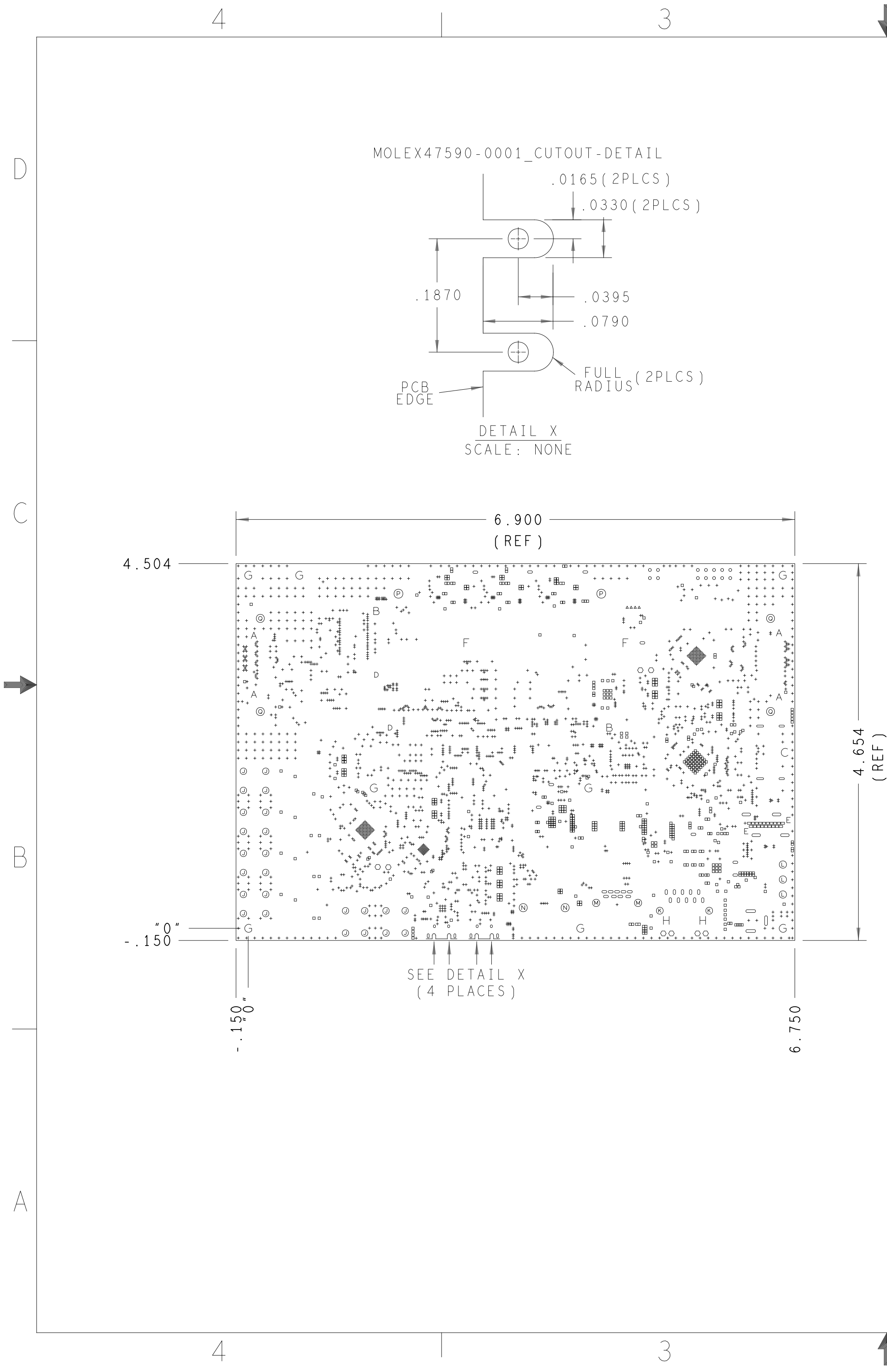
 <b>ANALOG DEVICES</b>		<b>WWM DIVISION</b> 804 WOBURN STREET WILMINGTON, MA 01887	
SIZE	FSCM NO	DRAWING NUMBER	REV
C	24355	01-074767	B
SCALE	1/1	SHEET 2 OF 2	




REVISIONS			
REV	DESCRIPTION	DATE	APPROVED
A	INITIAL RELEASE	24AUG23	A. POP
B	ECR-117475	30NOV23	A. POP
B1	ECR-118926	22JAN24	A. POP

HOLE TOLERANCE  
UNLESS SPECIFIED  
PLATED: +/- 3 MILS  
NON PLATED: +/- 2 MILS

DRILL CHART: TOP to BOTTOM				
ALL UNITS ARE IN MILS				
FIGURE	SIZE	PLATED	QTY	TOLERANCE/NOTES
.	6.0	PLATED	2	DIA MAX
+	7.0	PLATED	2299	DIA MAX
°	10.0	PLATED	498	DIA MAX
=	22.0	PLATED	19	
^	29.0	PLATED	4	
°	30.0	PLATED	18	
°	35.0	PLATED	10	
°	40.0	PLATED	8	
°	45.0	PLATED	14	
⊙	63.0	PLATED	24	
⊙	65.0	PLATED	2	
⊙	70.0	PLATED	3	
⊙	90.0	PLATED	2	
⊙	95.0	PLATED	2	
⊙	108.27	PLATED	2	
⊙	125.0	PLATED	4	
A	40.0	NON-PLATED	4	
B	43.0	NON-PLATED	2	
C	55.0	NON-PLATED	1	
D	63.0	NON-PLATED	2	
E	67.0	NON-PLATED	2	
F	118.0	NON-PLATED	2	
G	125.0	NON-PLATED	8	
H	130.0	NON-PLATED	2	
°	34.0x26.0	PLATED	4	
°	51.0x24.0	PLATED	4	
°	67.0x24.0	PLATED	2	
°	87.0x24.0	PLATED	2	
°	106.0x35.0	PLATED	4	
°	120.0x35.0	PLATED	2	
°	120.0x35.0	PLATED	1	

SEE NOTE 20  
SEE NOTE 20  
SEE NOTE 20

PRIMARY SIDE

UNLESS OTHERWISE SPECIFIED DIMENSIONS ARE IN INCHES		APPROVAL	DATE	 <div>WWM DIVISION 804 WOBURN STREET WILMINGTON, MA 01887</div>	
TOLERANCES		TEMPLATE ENGINEER			
DECIMALS	FRACTIONS	HARDWARE SERVICES	24AUG23	TITLE FABRICATION GMSL CAMERA VIPER CUSTOMER EVALUATION Z	
.XX --.010	--1/32	M.VALE			
.XXX --.005	--	HARDWARE SYSTEMS			
.XXXX --.0050					
MATERIAL	TEST ENGINEER				
	COMPONENT ENGINEER N. CATALAN		30NOV23		
	TEST PROCESS				
FINISH	HARDWARE RELEASE K. JABATAN		24AUG23		
	DESIGNER S.DE CASTRO		24AUG23		
	PTD ENGINEER A. POP		24AUG23		
DO NOT SCALE DWG		CHECKER		SIZE C	FSCM NO 24355
				DRAWING NUMBER 09-074767	REV B
				SCALE 1/1	SHEET 1 OF 2

A

- 

## 2

- B

## A

- FAB NOTES REVISION: 2ND NOVEMBER 2022

LAMINATION DIAGRAM

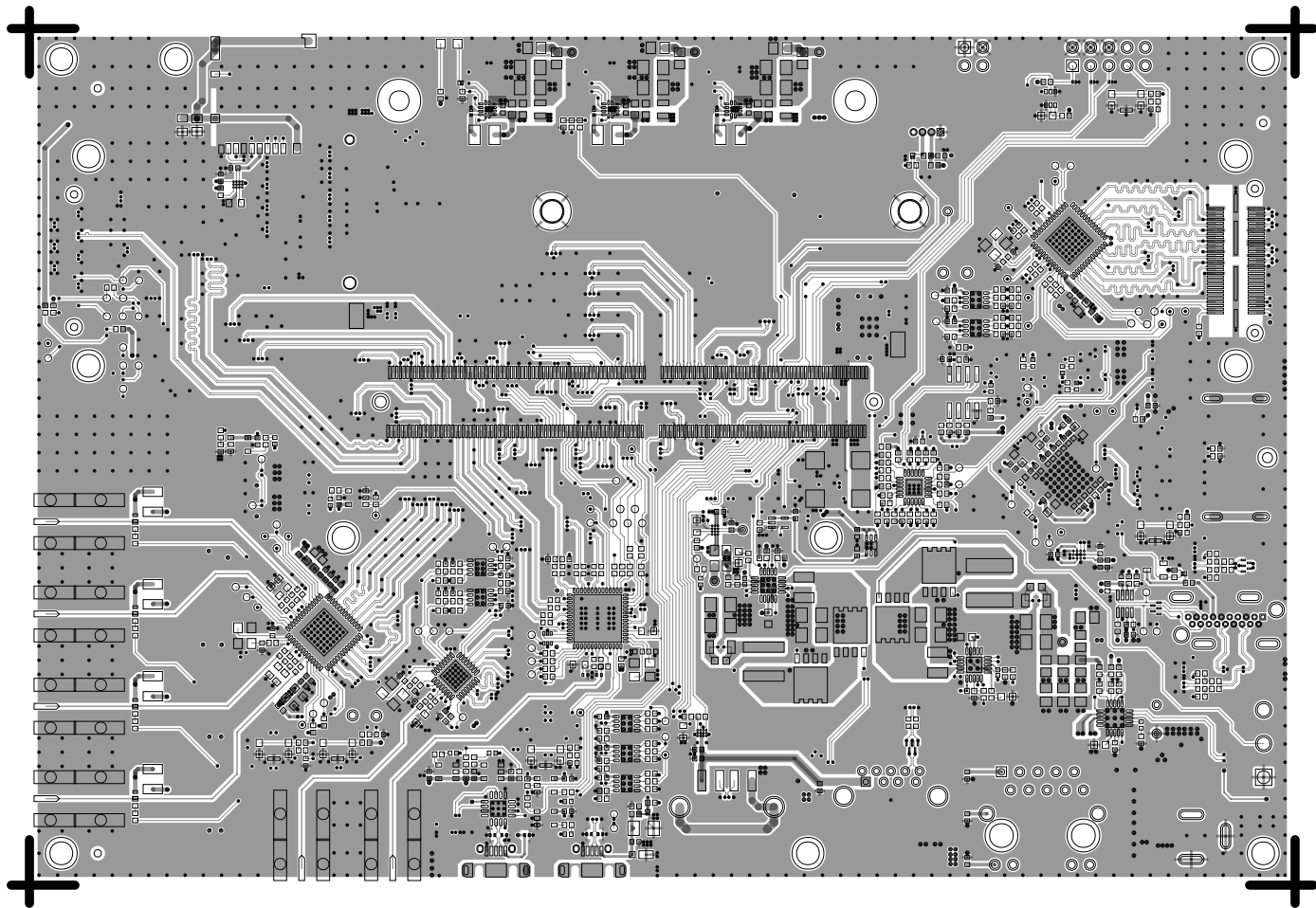
THE FINISHED PCB THICKNESS TO BE: 0.062" +/-10%

NOTE: DO NOT EDIT THIS TABLE MANUALLY:USE IMPEDANCE TABLE GENERATOR FROM ADI Tools

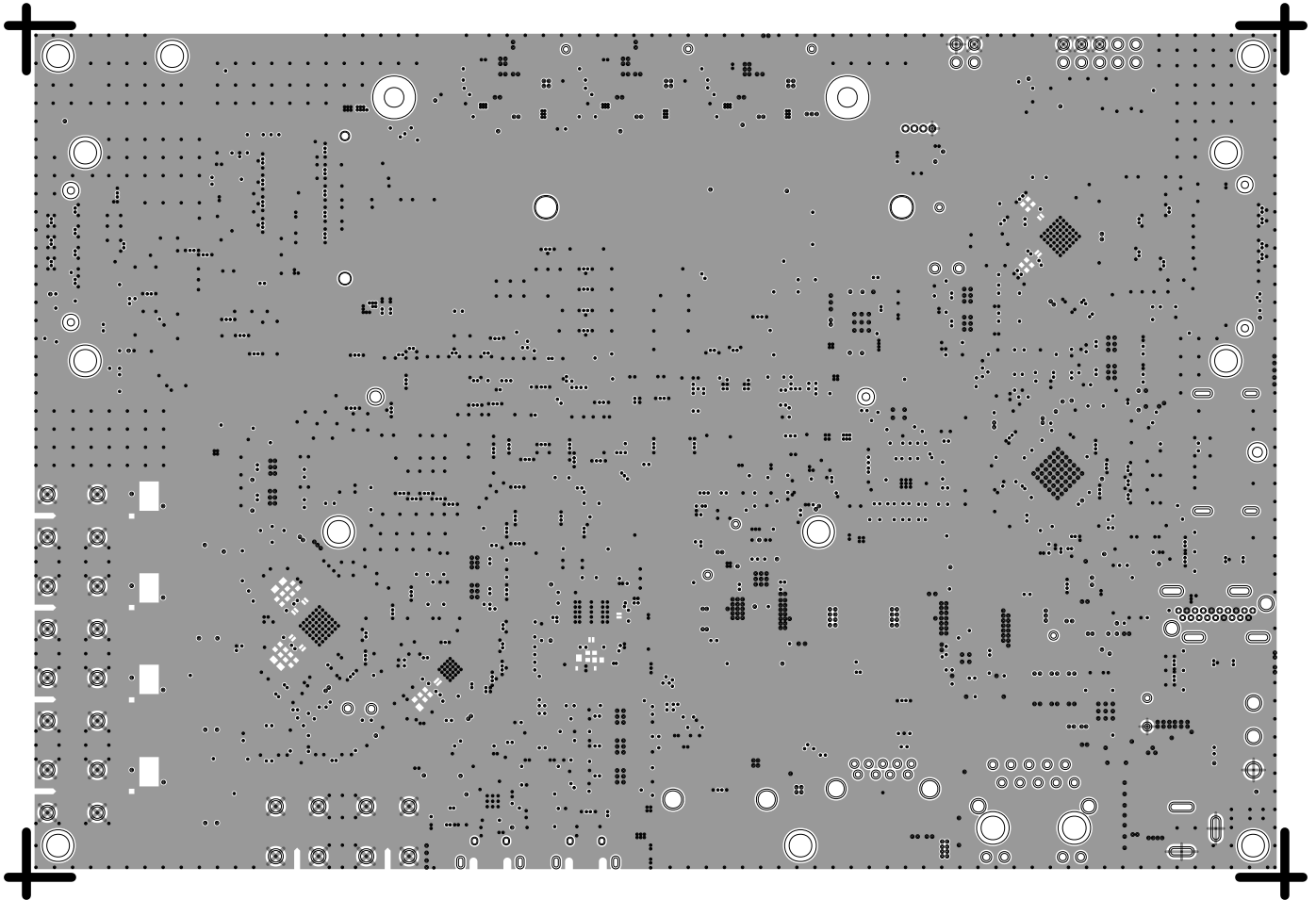
SHEET 2 OF 2



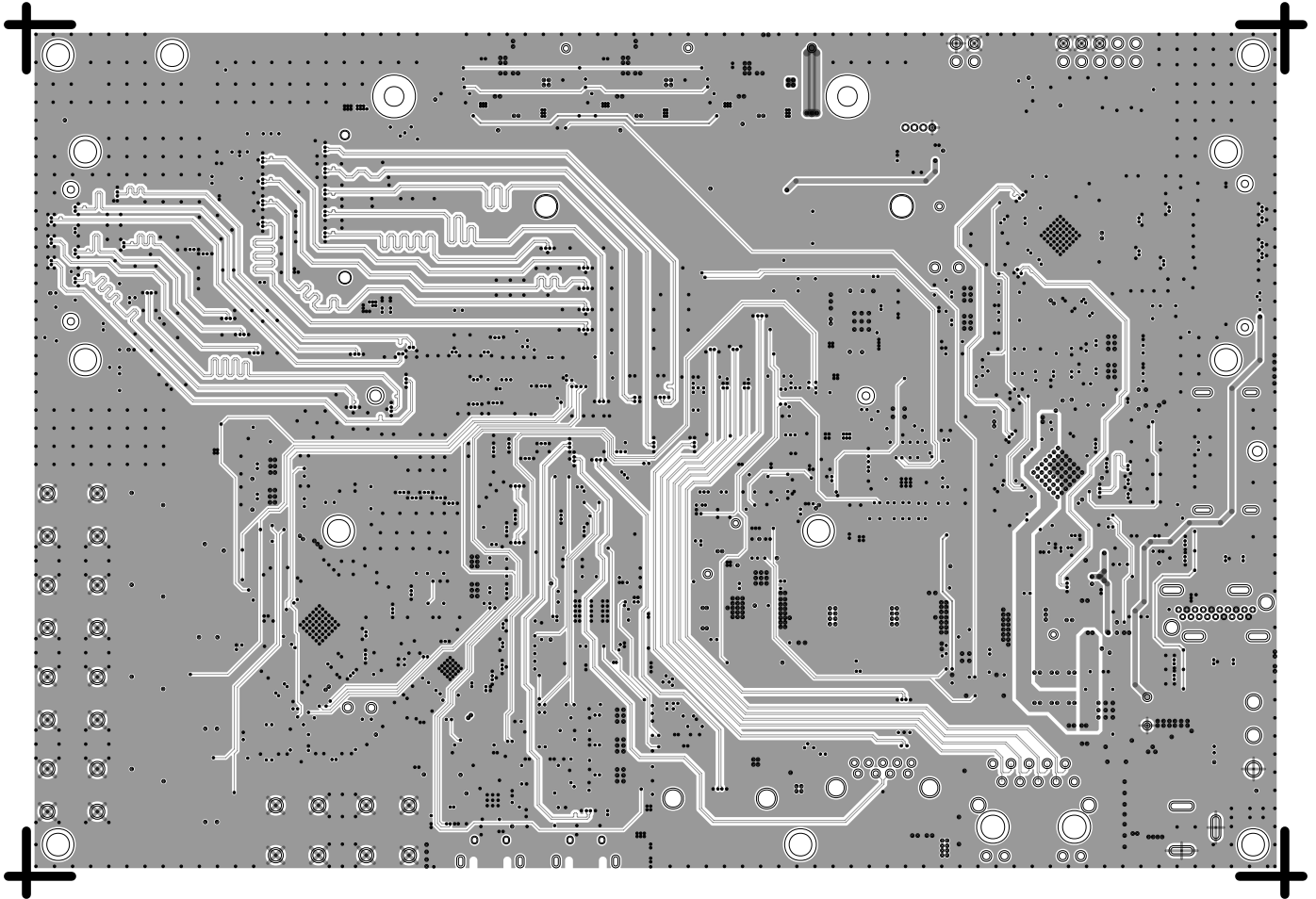
L1 PRIMARY  
08-074767-01  
REV B



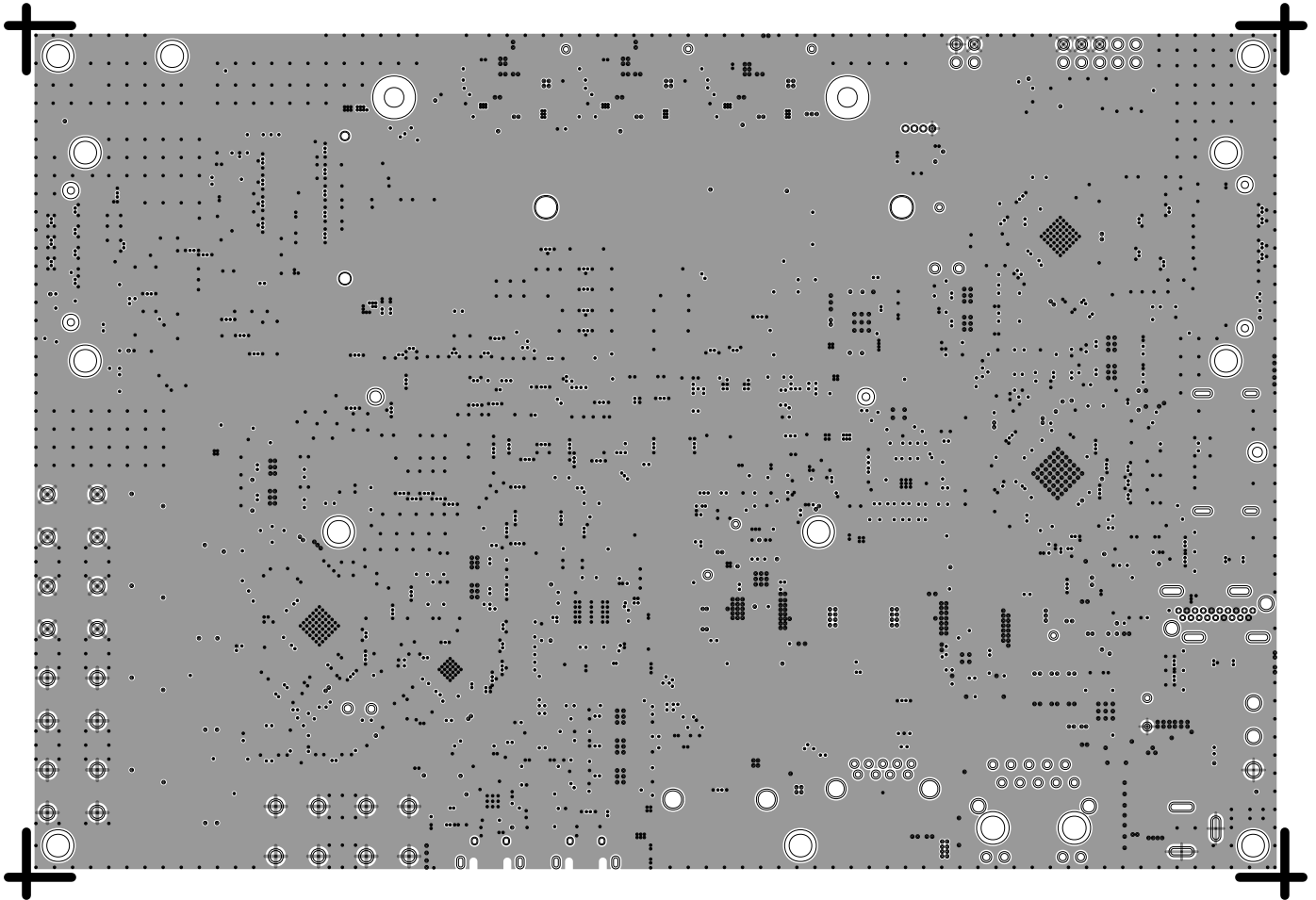
L2 GND  
08-074767-07  
REV B



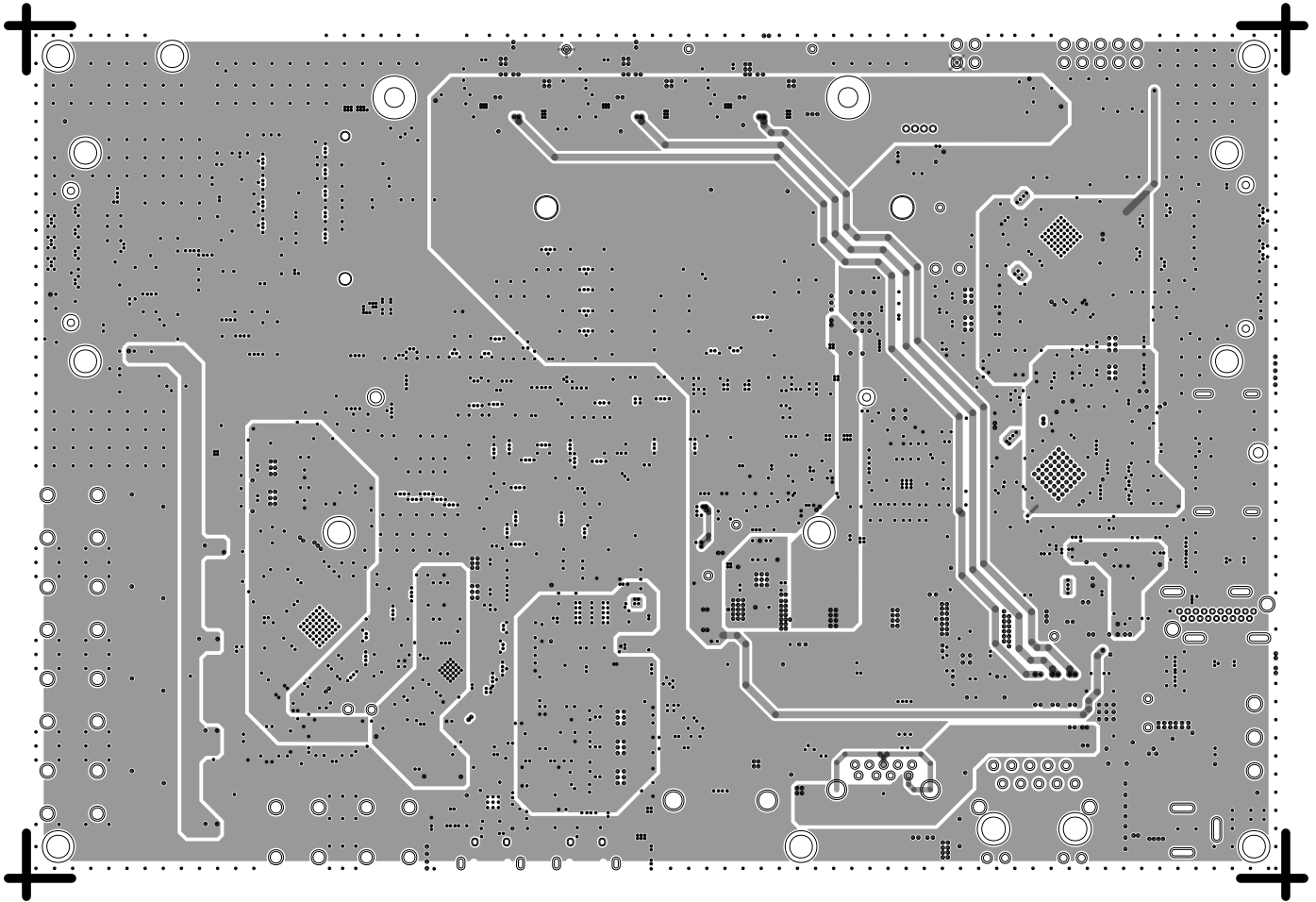
L3 SIG  
08-074767-08  
REV B



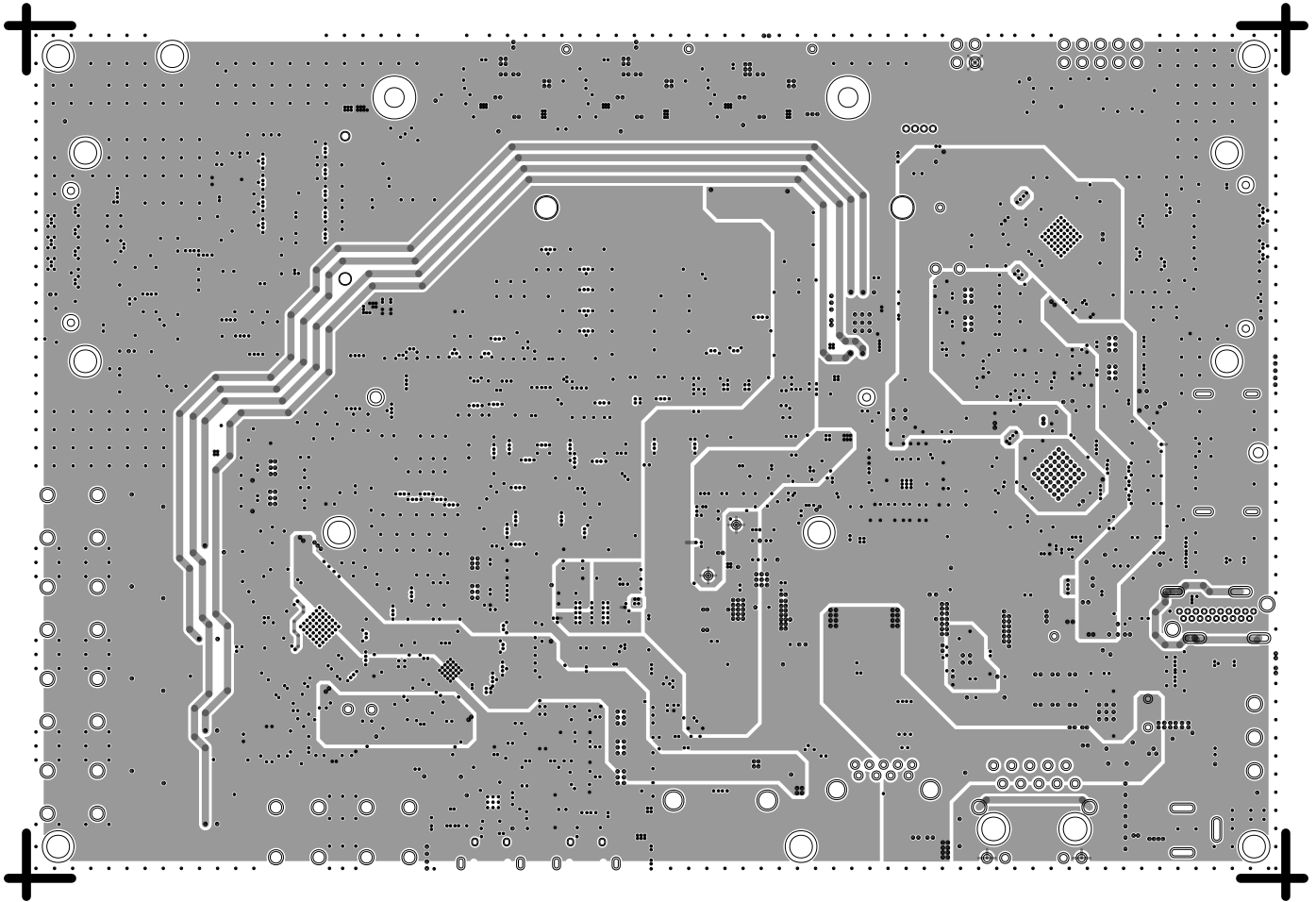
L4 GND  
08-074767-09  
REV B



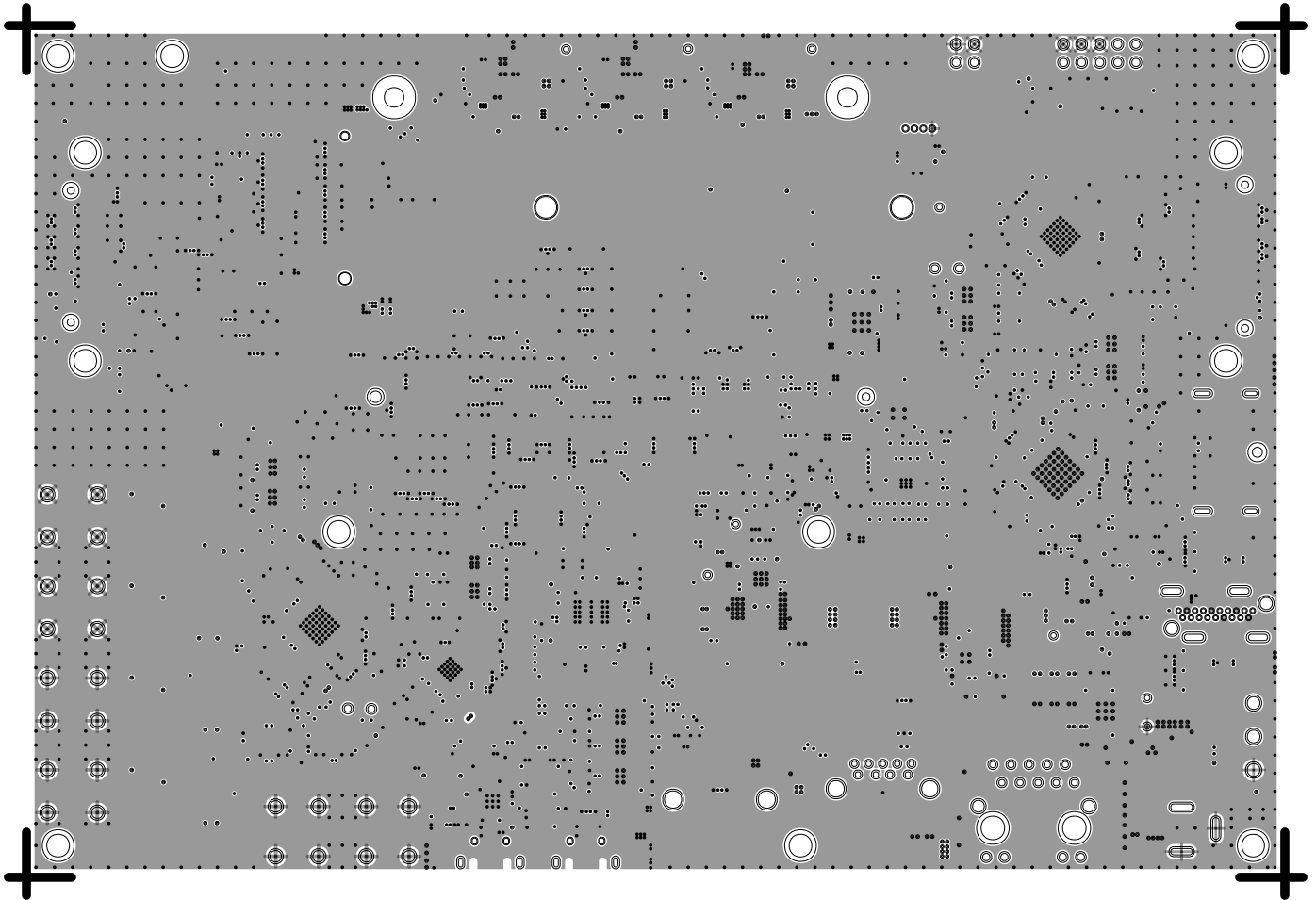
L5 PWR  
08-074767-10  
REV B



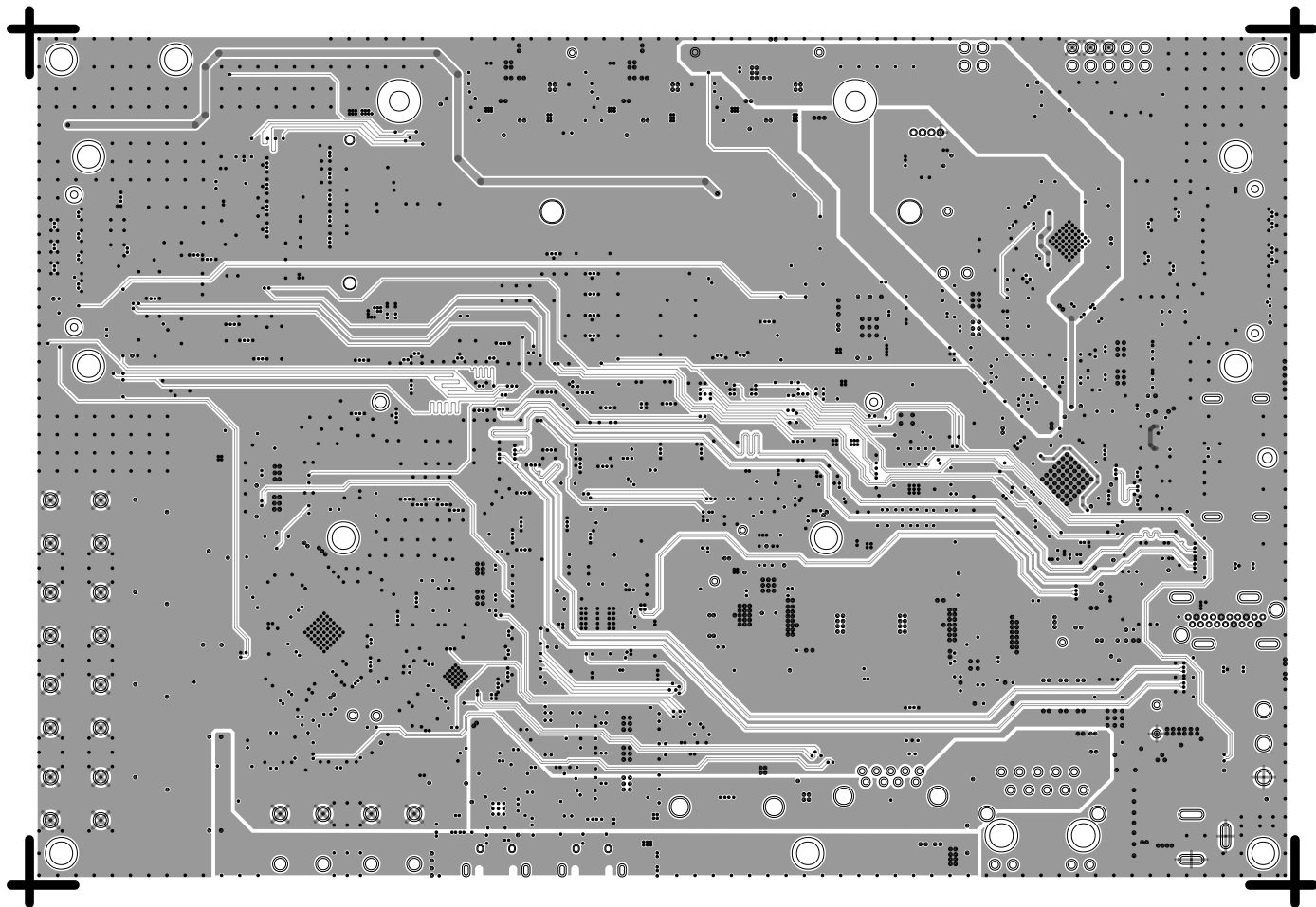
L6 PWR  
08-074767-11  
REV B



L7 GND  
08-074767-12  
REV B

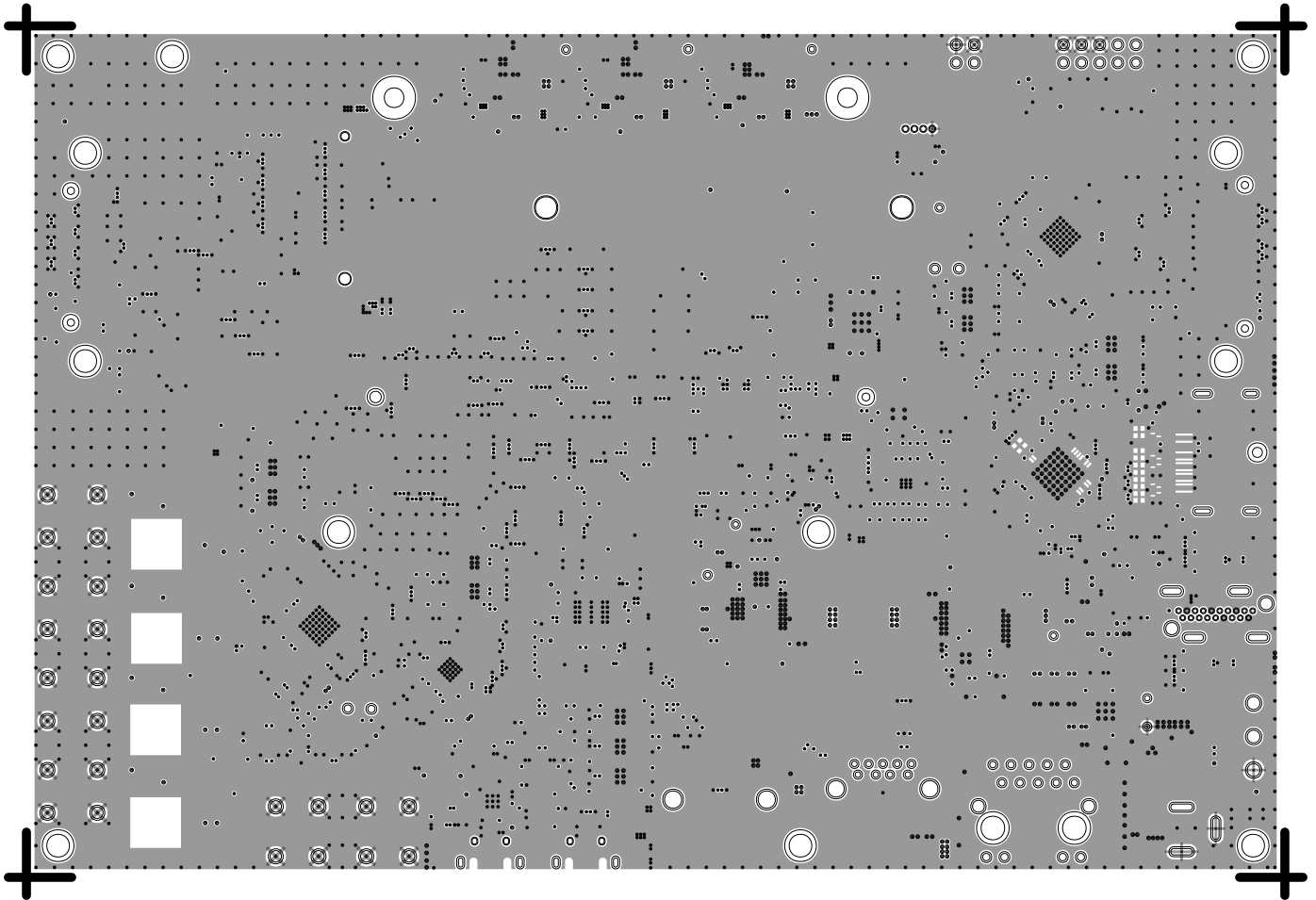


L8 SIG  
08-074767-13  
REV B

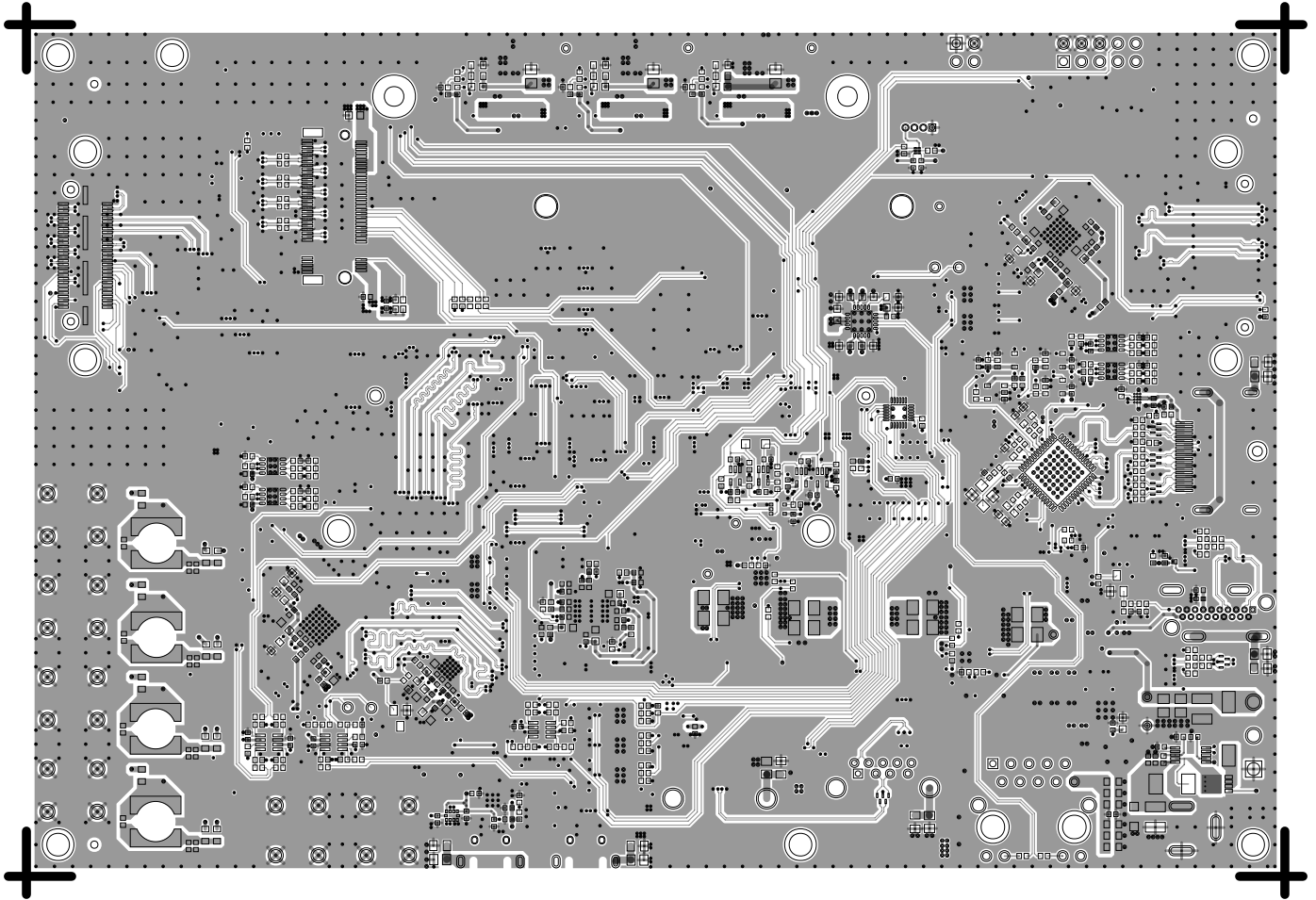




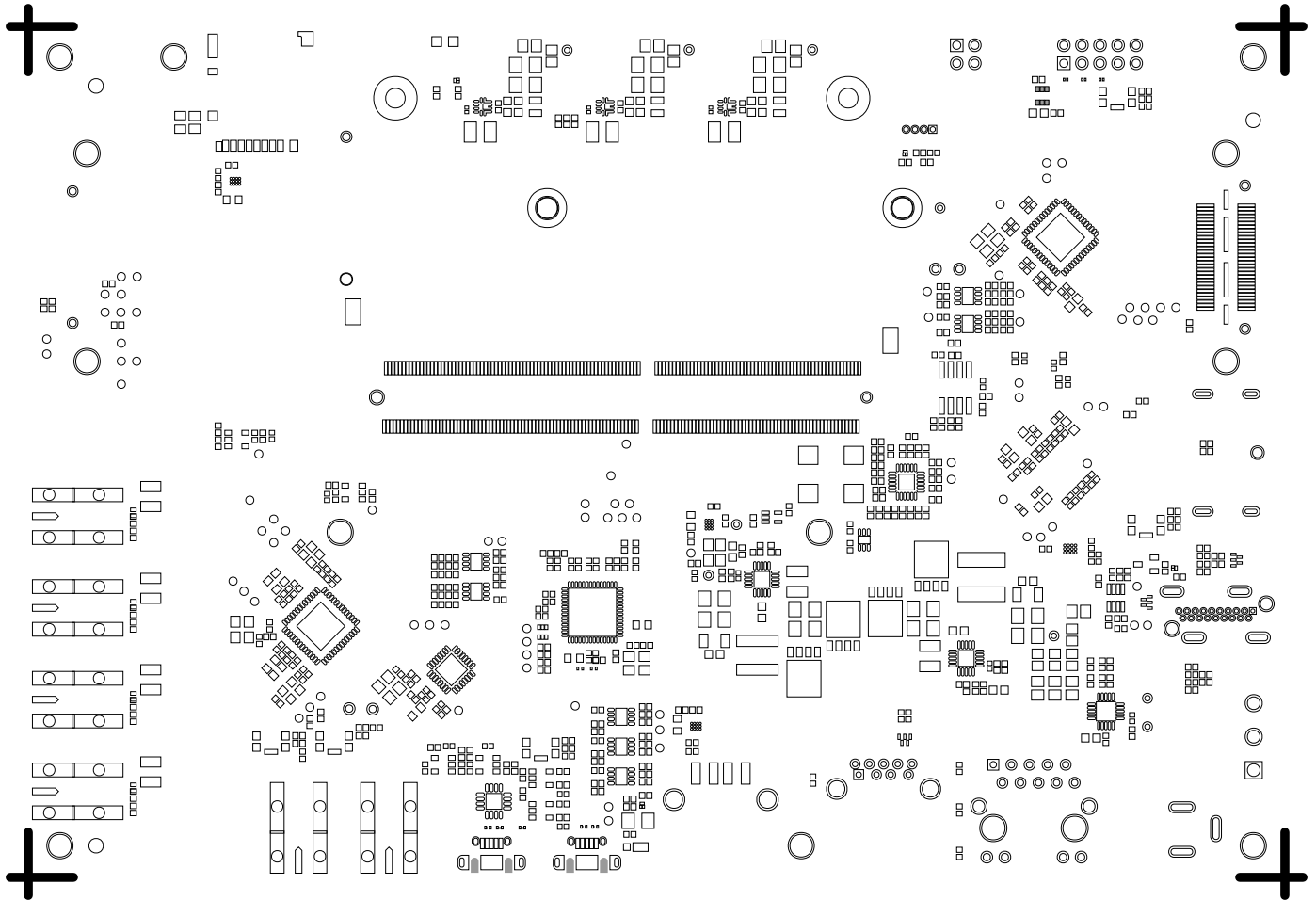
L9 GND  
08-074767-14  
REV B



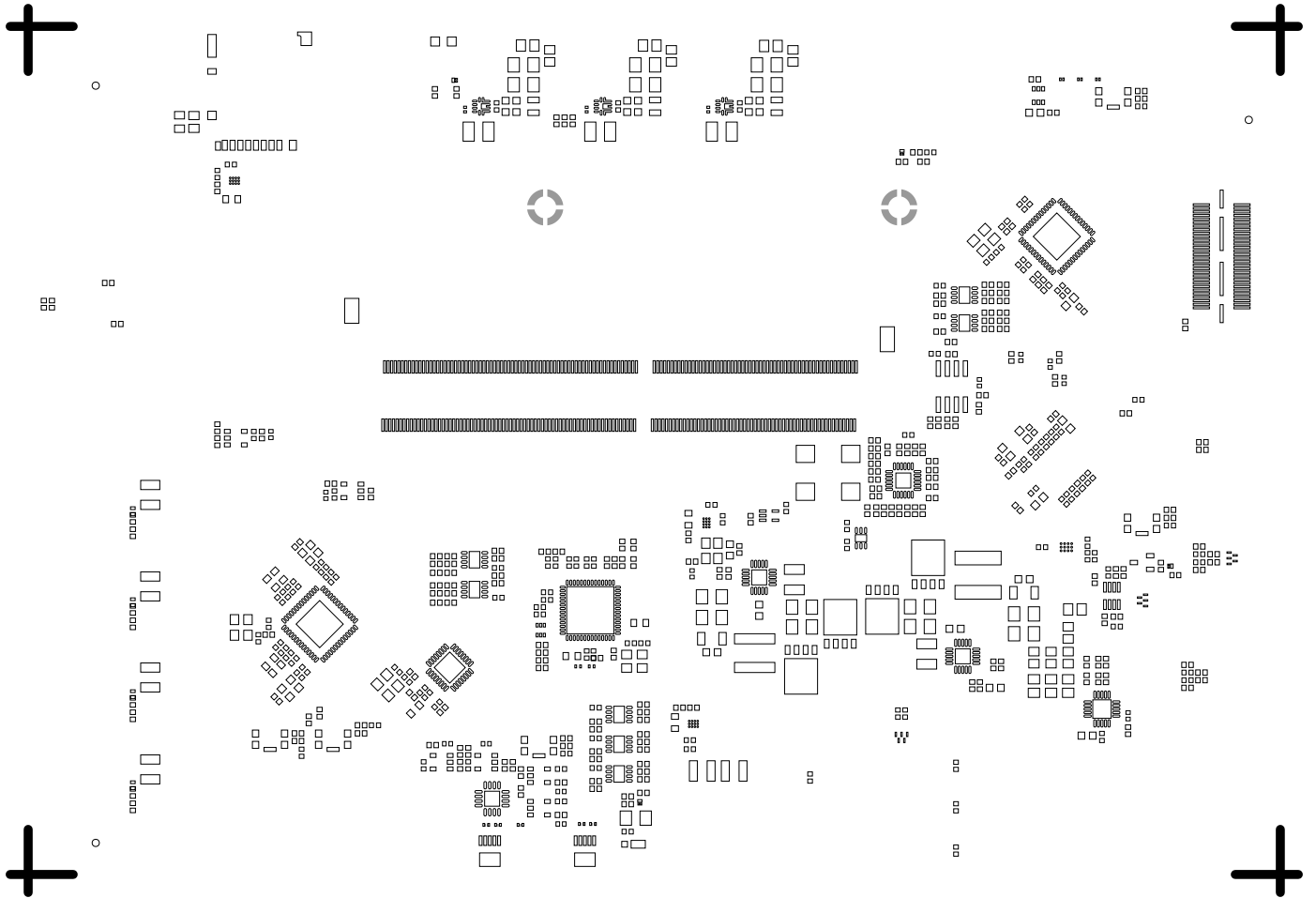
L10 SECONDARY  
08-074767-02  
REV B



SOLDERMASK PRIMARY  
08-074767-04  
REV B



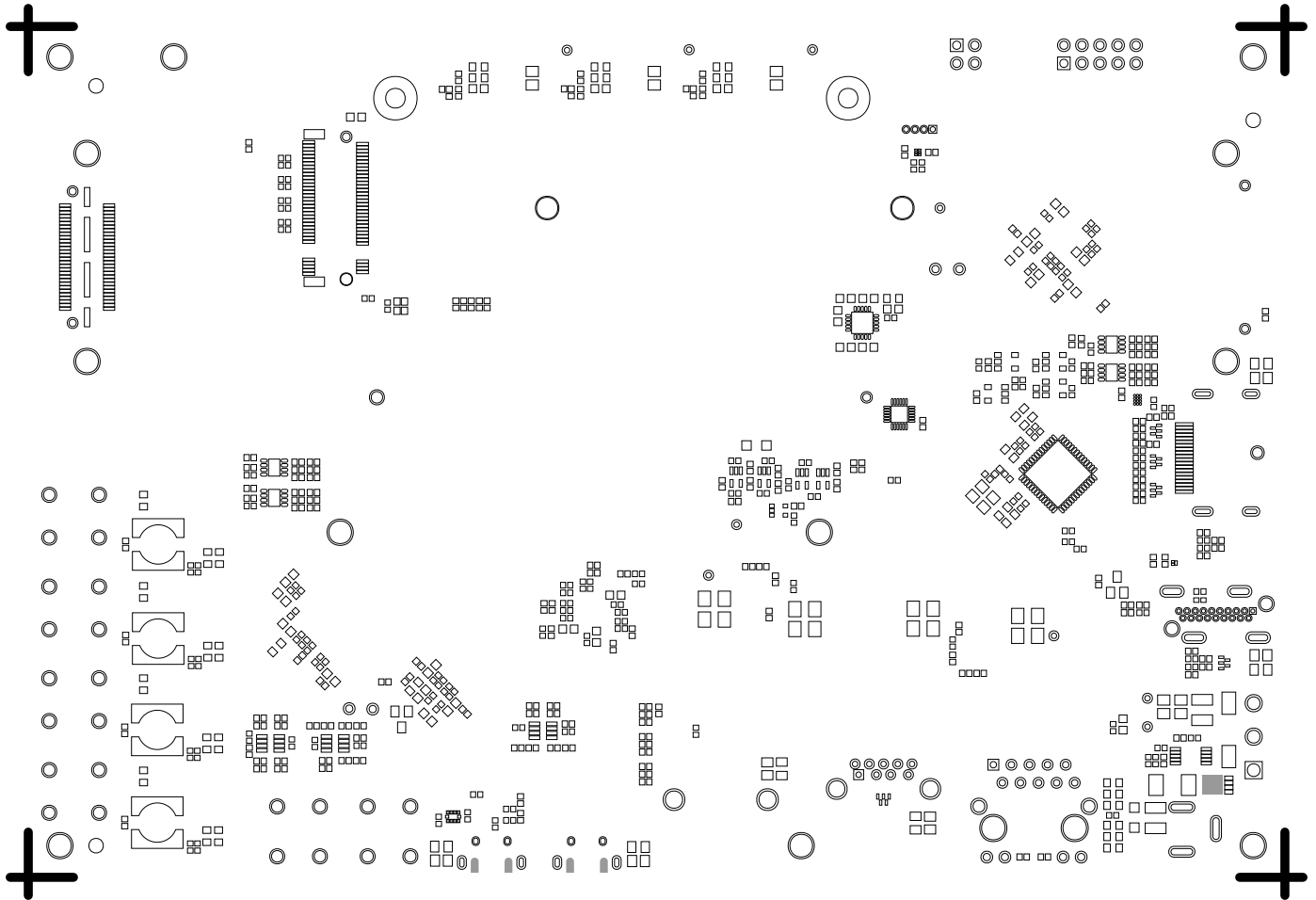
PASTEMASK PRIMARY  
08-074767-15  
REV B



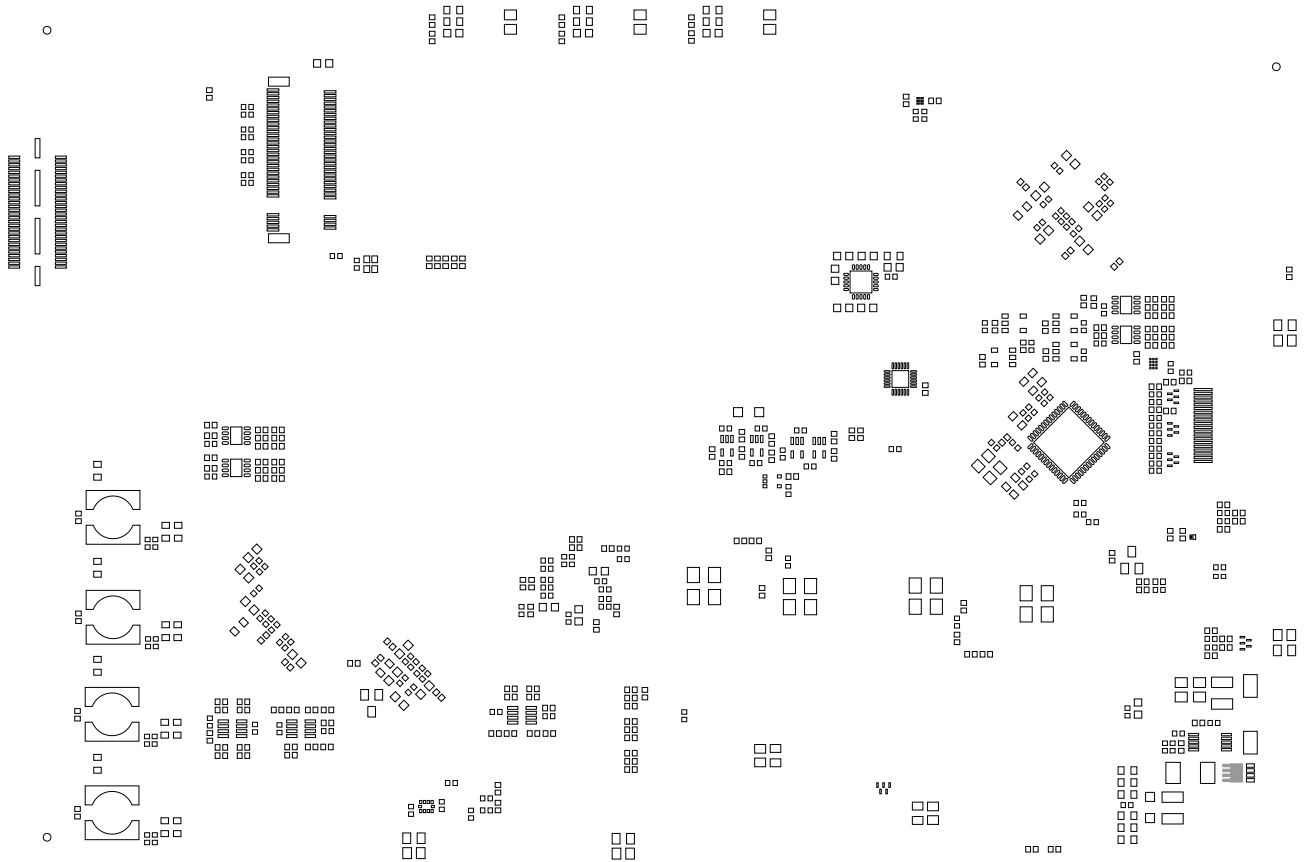
+



SOLDERMASK SECONDARY  
08-074767-06  
REV B



PASTEMASK SECONDARY  
08-074767-16  
REV B



+

