


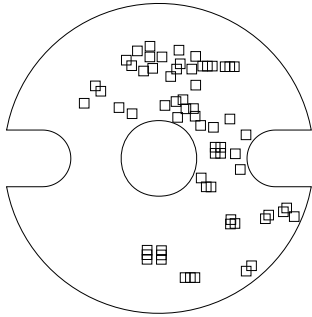
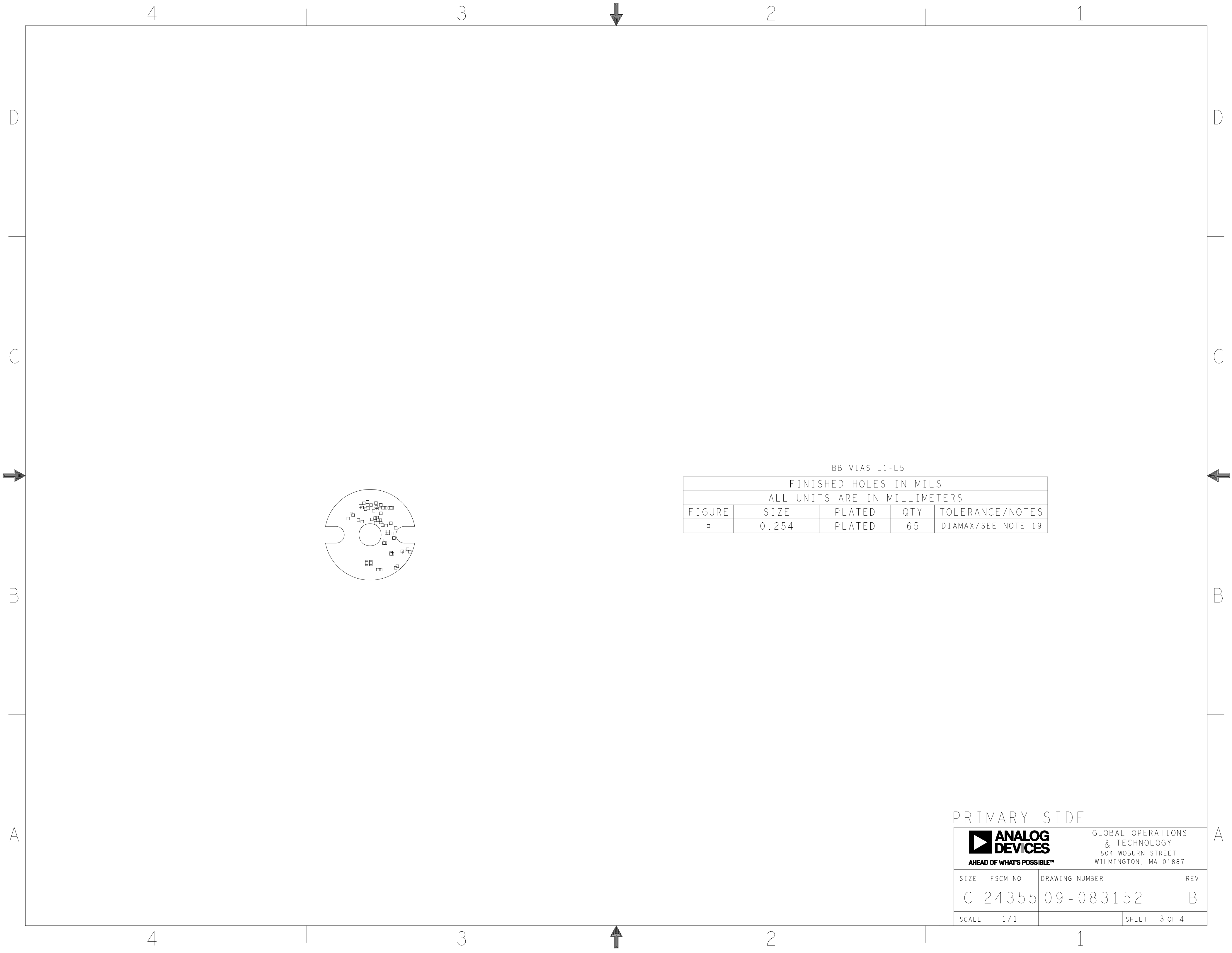
REVISIONS			
REV	DESCRIPTION	DATE	APPROVED
A	INITIAL RELEASE	16AUG24	D. SUDOY
B	CHANGES AS PER ECR-123869	03APR25	D. SUDOY

HOLE TOLERANCE  
UNLESS SPECIFIED  
PLATED: +/- 0.0762 MM

FINISHED HOLES IN MILS				
ALL UNITS ARE IN MILLIMETERS				
FIGURE	SIZE	PLATED	QTY	TOLERANCE/NOTES
□	0.254	PLATED	110	DIAMAX/SEE NOTE 20
△	1.27	PLATED	6	DIAMAX/SEE NOTE 20


PRIMARY SIDE									
UNLESS OTHERWISE SPECIFIED DIMENSIONS ARE IN MM TOLERANCES DECIMALS FRACTIONS ANGLES .XX -.010 --1/32 -- 2 .XXX -.005 .XXXX -.0050	APPROVAL		DATE		<div><div>ANALOG DEVICES</div><div>AHEAD OF WHAT'S POSSIBLE™</div></div> <div>GLOBAL OPERATIONS &amp; TECHNOLOGY 804 WOBURN STREET WILMINGTON, MA 01887</div>				
	TEMPLATE ENGINEER								
	HARDWARE SERVICES M. VALE		16AUG24						
	HARDWARE SYSTEMS								
MATERIAL	TEST ENGINEER				TITLE FABRICATION LT8440 10BASE-T1L TEMP SENSOR REF DESIGN 1 CUSTOMER EVAL BOARD Z				
	COMPONENT ENGINEER K. EMPENSANDO		16AUG24						
	HARDWARE RELEASE K. JABATAN		16AUG24						
FINISH	PCB DESIGNER D. VILLANUEVA		16AUG24		SIZE C	FSCM NO 24355			
	ENGINEER D. SUDOY		16AUG24						
	CHECKER								
DO NOT SCALE DWG				SCALE 1 / 1			DRAWING NUMBER 09-083152		REV B
				SCALE 1 / 1			SHEET 1 OF 4		





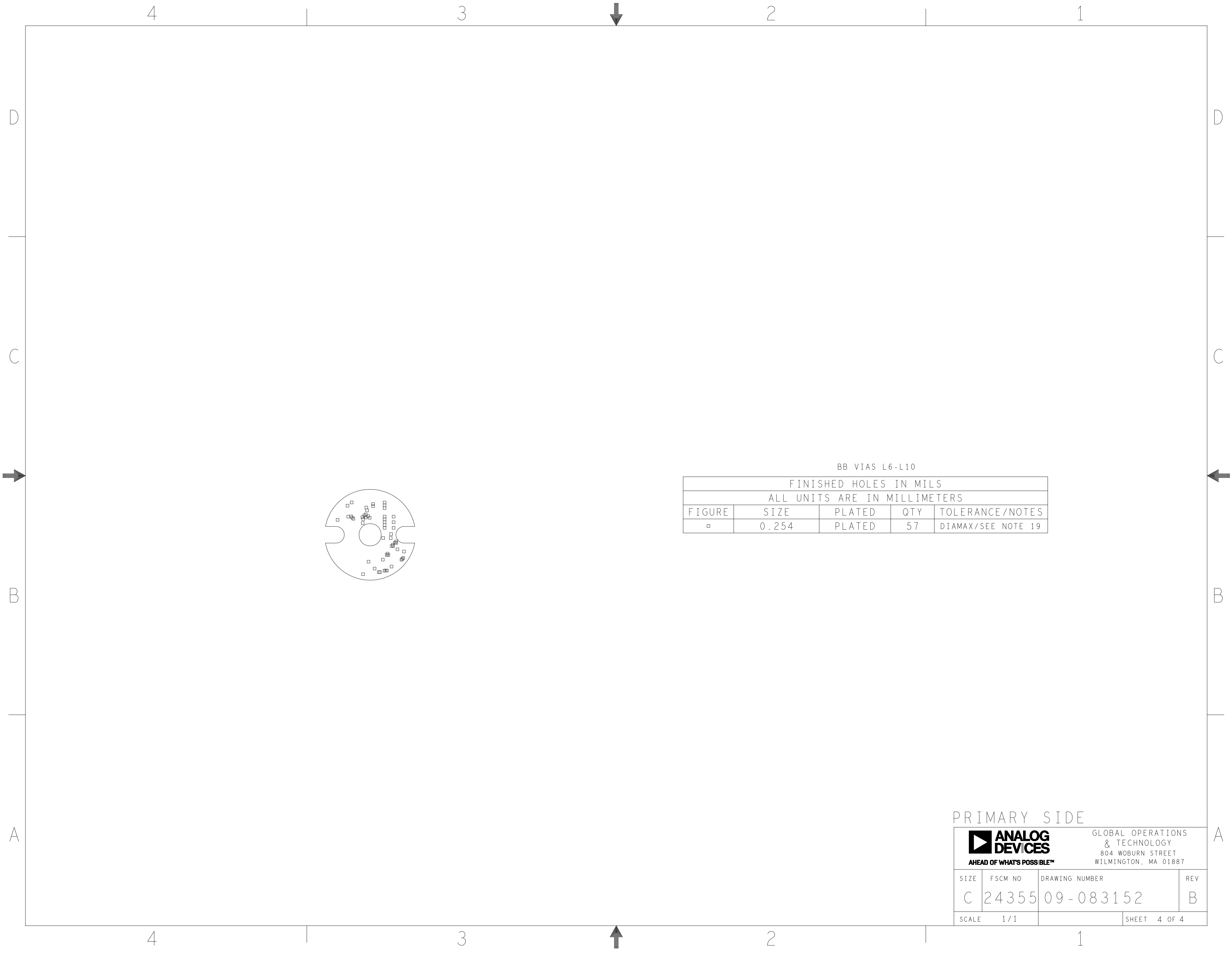
BB VIAS L1-L5				
FINISHED HOLES IN MILS				
ALL UNITS ARE IN MILLIMETERS				
FIGURE	SIZE	PLATED	QTY	TOLERANCE/NOTES
□	0.254	PLATED	65	DIAMAX/SEE NOTE 19

PRIMARY SIDE



GLOBAL OPERATIONS  
& TECHNOLOGY  
804 WOBURN STREET  
WILMINGTON, MA 01887


SIZE	FSCM NO	DRAWING NUMBER	REV
C	24355	09-083152	B
SCALE	1 / 1	SHEET	3 OF 4

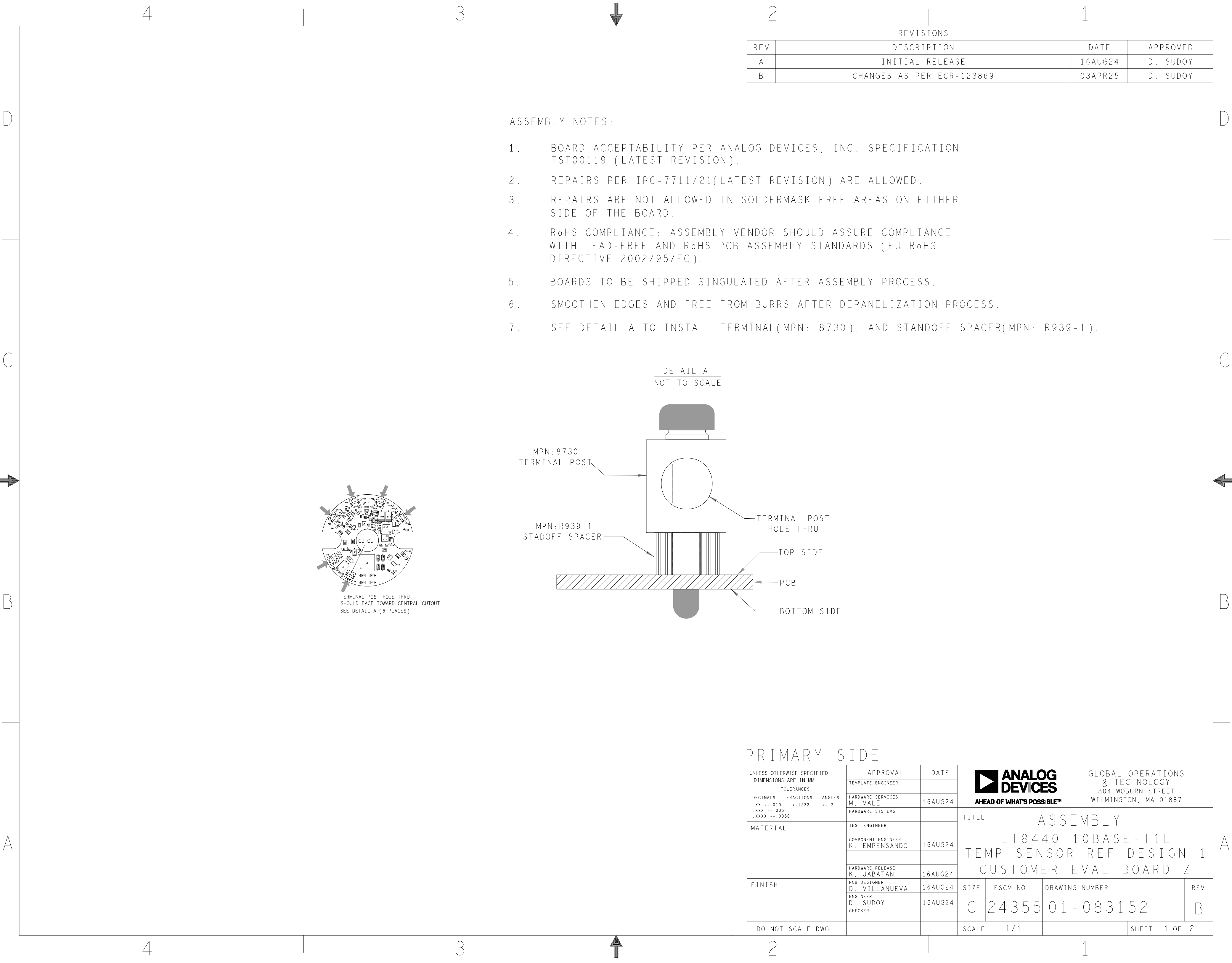


BB VIAS L6-L10

FINISHED HOLES IN MILS				
ALL UNITS ARE IN MILLIMETERS				
FIGURE	SIZE	PLATED	QTY	TOLERANCE/NOTES
□	0.254	PLATED	57	DIAMAX/SEE NOTE 19

PRIMARY SIDE

		GLOBAL OPERATIONS & TECHNOLOGY 804 WOBURN STREET WILMINGTON, MA 01887	
SIZE	FSCM NO	DRAWING NUMBER	REV
C	24355	09-083152	B
SCALE	1 / 1	SHEET 4 OF 4	

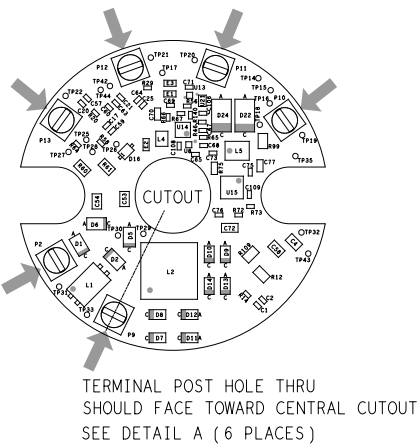
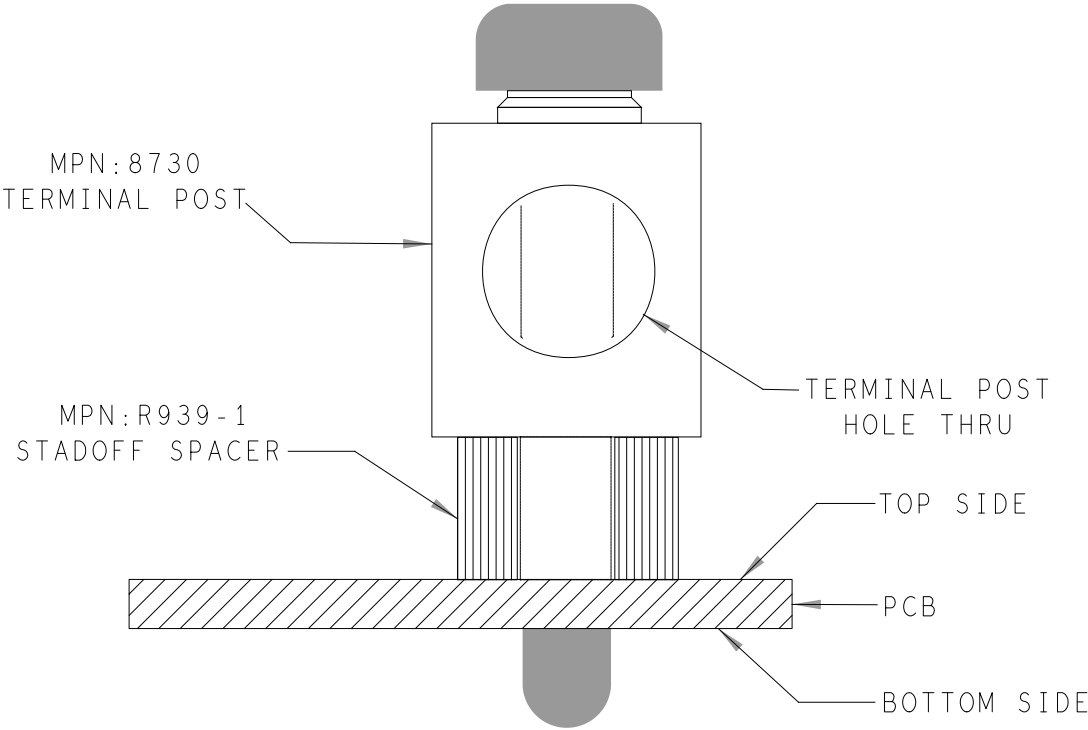


REVISIONS			
REV	DESCRIPTION	DATE	APPROVED
A	INITIAL RELEASE	16AUG24	D. SUDOY
B	CHANGES AS PER ECR-123869	03APR25	D. SUDOY

ASSEMBLY NOTES:

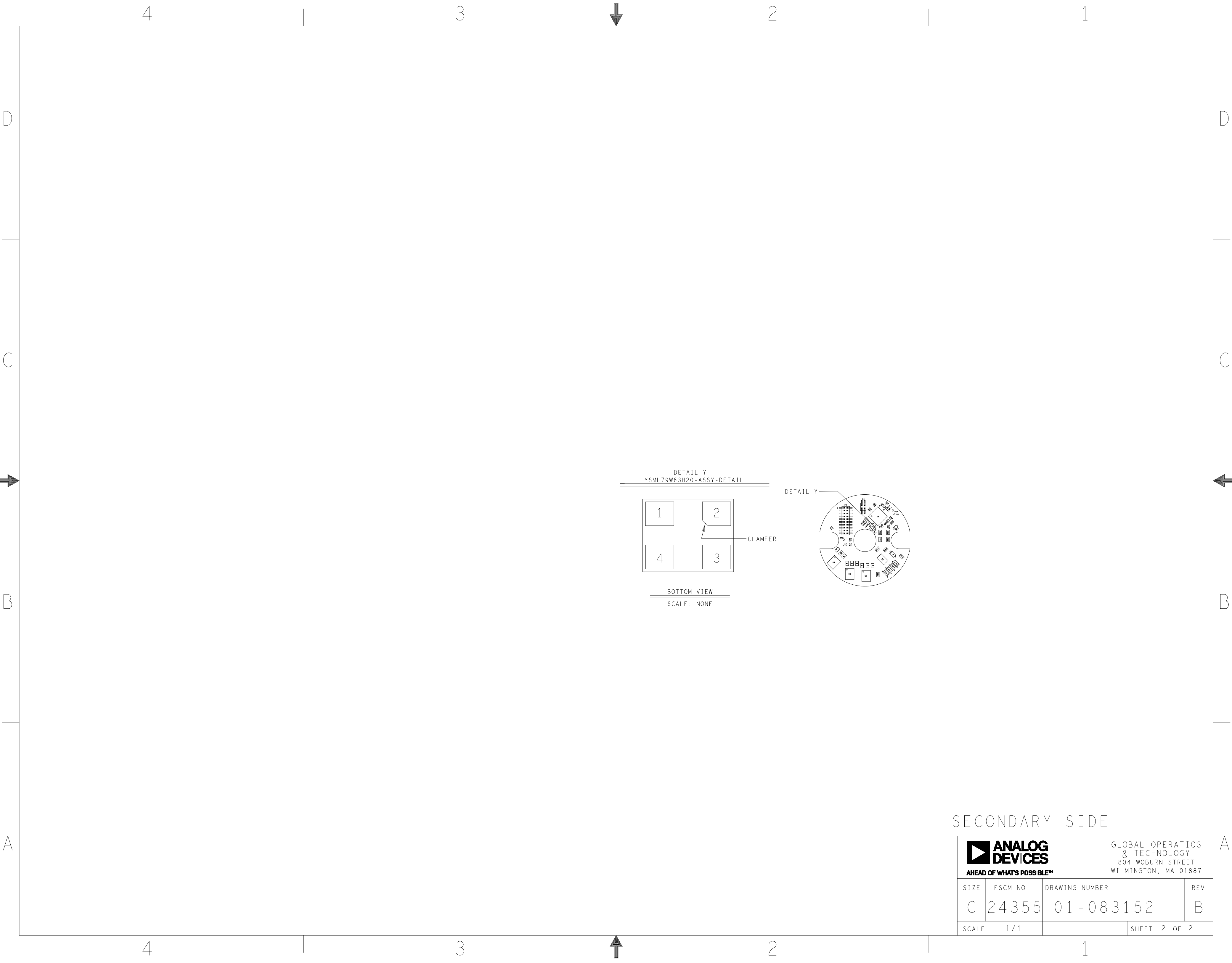
- BOARD ACCEPTABILITY PER ANALOG DEVICES, INC. SPECIFICATION TST00119 (LATEST REVISION).
- REPAIRS PER IPC-7711/21(LATEST REVISION) ARE ALLOWED.
- REPAIRS ARE NOT ALLOWED IN SOLDERMASK FREE AREAS ON EITHER SIDE OF THE BOARD.
- RoHS COMPLIANCE: ASSEMBLY VENDOR SHOULD ASSURE COMPLIANCE WITH LEAD-FREE AND RoHS PCB ASSEMBLY STANDARDS (EU RoHS DIRECTIVE 2002/95/EC).
- BOARDS TO BE SHIPPED SINGULATED AFTER ASSEMBLY PROCESS.
- SMOOTHEN EDGES AND FREE FROM BURRS AFTER DEPANELIZATION PROCESS.
- SEE DETAIL A TO INSTALL TERMINAL(MPN: 8730), AND STANDOFF SPACER(MPN: R939-1).

DETAIL A  
NOT TO SCALE

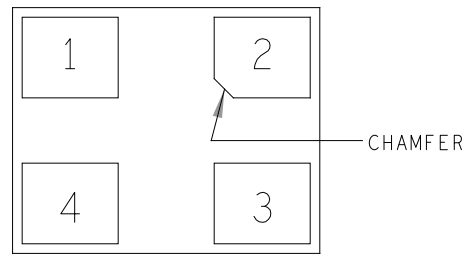


PRIMARY SIDE

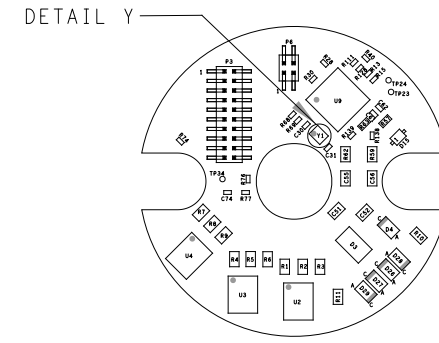
UNLESS OTHERWISE SPECIFIED DIMENSIONS ARE IN MM TOLERANCES DECIMALS FRACTIONS ANGLES .XX -.010 +-1/32 +- 2 .XXX -.005 .XXX -.0050	APPROVAL TEMPLATE ENGINEER	DATE	<div><div><div></div><div>ANALOG DEVICES</div><div>AHEAD OF WHAT'S POSSIBLE™</div></div><div>GLOBAL OPERATIONS &amp; TECHNOLOGY 804 WOBURN STREET WILMINGTON, MA 01887</div></div>			
	HARDWARE SERVICES M. VALE	16AUG24				
	HARDWARE SYSTEMS		TITLE ASSEMBLY LT8440 10BASE-T1L TEMP SENSOR REF DESIGN 1 CUSTOMER EVAL BOARD Z			
	MATERIAL	TEST ENGINEER				
FINISH	COMPONENT ENGINEER K. EMPENSANDO	16AUG24				
	HARDWARE RELEASE K. JABATAN	16AUG24				
	PCB DESIGNER D. VILLANUEVA	16AUG24				
DO NOT SCALE DWG	ENGINEER D. SUDOY	16AUG24	SIZE C	FSCM NO 24355	DRAWING NUMBER 01-083152	REV B
	CHECKER		SCALE 1/1	SHEET 1 OF 2		



DETAIL Y  
YSML79W63H20-ASSY-DETAIL



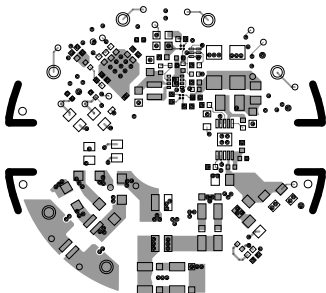
BOTTOM VIEW  
SCALE: NONE



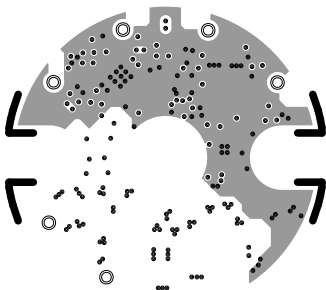
SECONDARY SIDE

 <b>ANALOG DEVICES</b> <small>AHEAD OF WHAT'S POSSIBLE™</small>		GLOBAL OPERATIONS & TECHNOLOGY 804 WOBURN STREET WILMINGTON, MA 01887	
SIZE	FSCM NO	DRAWING NUMBER	REV
C	24355	01-083152	B
SCALE	1/1	SHEET 2 OF 2	

L1 PRIMARY  
08-083152-01  
REV B

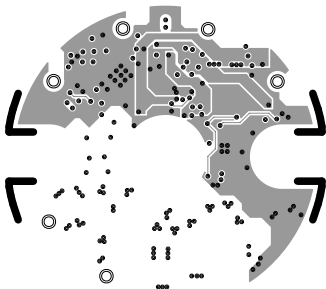


L2 GND  
08-083152-07  
REV B

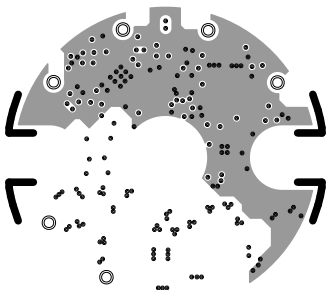




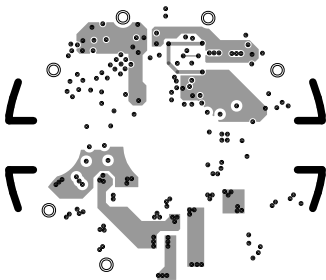
L3 SIG  
08-083152-08  
REV B



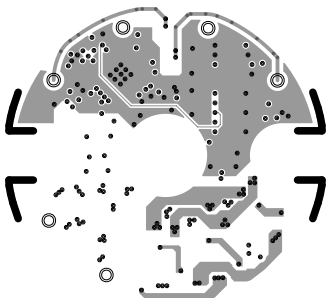
L4 GND  
08-083152-09  
REV B



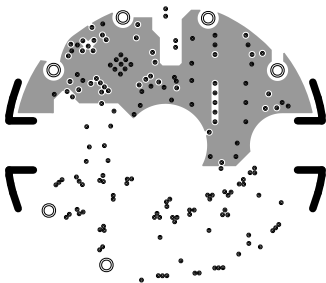
L5 PWR  
08-083152-10  
REV B



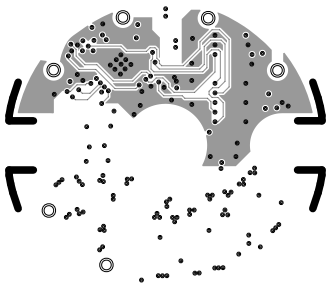
L6 PWR  
08-083152-11  
REV B



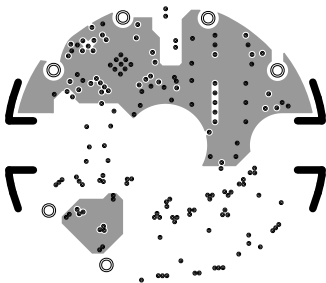
L7 GND  
08-083152-12  
REV B



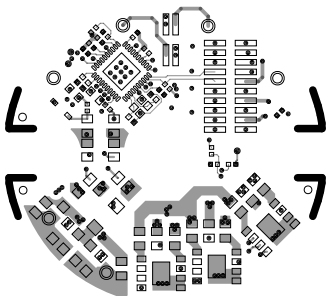
L8 SIG  
08-083152-13  
REV B



L9 GND  
08-083152-14  
REV B

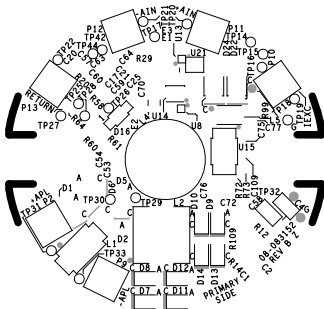


L10 SECONDARY  
08-083152-02  
REV B





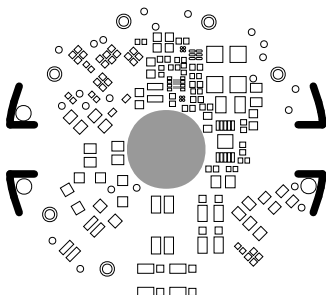
SILKSCREEN PRIMARY  
08-083152-03  
REV B



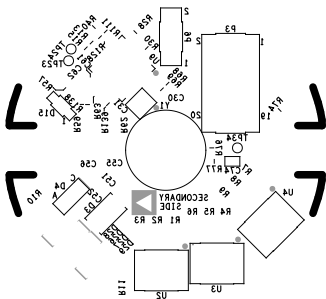
SOLDERMASK PRIMARY

08-083152-04

REV B



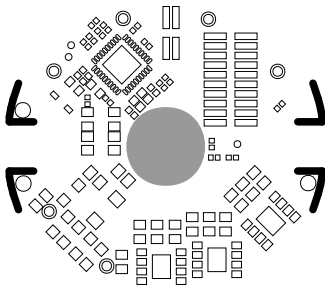
SILKSCREEN SECONDARY  
08-083152-05  
REV B



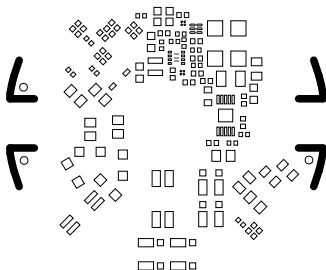
SOLDERMASK SECONDARY

08-083152-06

REV B



PASTEMASK PRIMARY  
08-083152-15  
REV B



PASTEMASK SECONDARY

08-083152-16

REV B

