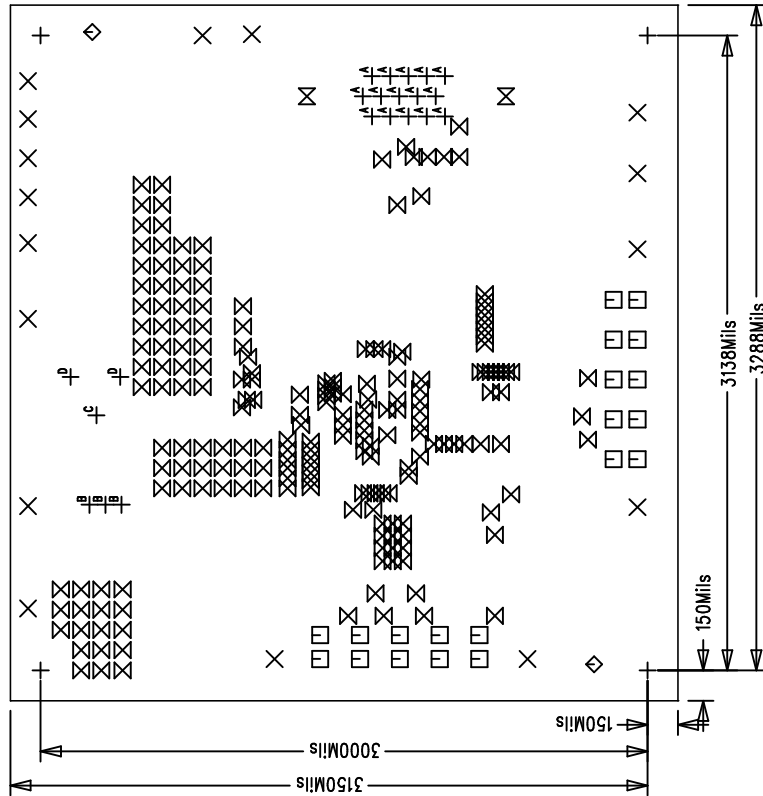
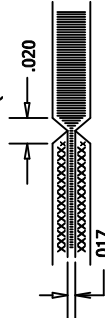



NOTES: UNLESS OTHERWISE SPECIFIED

1. FAB PER IPC-A-600.
2. MATERIAL: -LEAD FREE ASSEMBLY COMPLIANT, ISOLA FR-370HR OR EQUIVALENT.
 - FINISHED THICKNESS TO BE 0.062" +/- .005"
 - TOTAL OF 4 LAYERS WITH 2 OZ. CU ON THE OUTER LAYERS AND 1 OZ. CU ON THE INNER LAYERS.
 - FLAMMABILITY RATING: 94 V-0 MINIMUM.
3. SIZE: CUT TO DIMENSIONS AND TOLERANCES SHOWN.
0.00" ARE PRIMARY DATUMS.
4. DRILLING: -DRILL HOLES PER SCHEDULE. PLATE THROUGH HOLES WITH COPPER, 0.001" THICK MIN.
 - ALL HOLE SIZES ARE SPECIFIED AFTER PLATING.
 - HOLE LOCATION TOLERANCES ARE +/-0.003" IN RELATION TO CENTER
5. FINISH: -SNOBC USING LPT BOTH SIDES, COLOR GREEN.
 - GOLD IMMERSION BOTH SIDES.
 - FOR SILKSREENS: USE WHITE NON-CONDUCTIVE INK.
6. DO NOT ALTER ARTWORK e.g. TO ADD LOGO OR DATE CODE.
PAD SIZE CAN BE MODIFIED TO MEET END FINISH.
7. PCBs ARE TO BE RoHS COMPLIANT.
8. SCORING FOR PANELIZED PCB (PRODUCTION FAB ONLY):



| SIZE | QTY | SYM | PLATED | TOL |
|------|-----|-----|--------|----------|
| 187 | 4 | + | YES | +/-3Mils |
| 65 | 16 | × | YES | +/-3Mils |
| 40 | 20 | □ | YES | +/-3Mils |
| 70 | 2 | ◇ | NO | +/-3mil |
| 10 | 202 | ⊗ | YES | +/-3Mils |
| 125 | 2 | ⊗ | YES | +/-3Mils |
| 47 | 15 | ⊖ | YES | +/-3Mils |
| 31 | 3 | ⊖ | YES | +/-3Mils |
| 100 | 1 | ⊖ | YES | +/-3Mils |
| 120 | 2 | ⊖ | YES | +/-3Mils |

| | | | |
|---|------------|---|---------------------------|
| UNLESS OTHERWISE SPECIFIED | |  | |
| DIMENSIONS ARE IN INCHES | | | |
| TOLERANCES: | | | |
| 0.XX = ±0.01 | | | |
| 0.XXX = ±0.005 | | | |
| INTERPRET DIM AND TOL PER ASME Y14.5M-1994 | | | |
| THIRD ANGLE PROJECTION | | | |
| APPROVALS | | TITLE: FABRICATION DRAWING | |
| PCB DES. | R&B | UNIVERSAL DUAL BATTERY CHARGER/SELECTOR BOARD | |
| APP ENG. | Joshua Yee | SIZE | LTC1960CG |
| | | N/A | IC NO. DEMO CIRCUIT 1904A |
| | | | REV 1 |
| SCALE = NONE | | FILENAME: 1904A_Rev1.PCB SHT 1 OF 1 | |