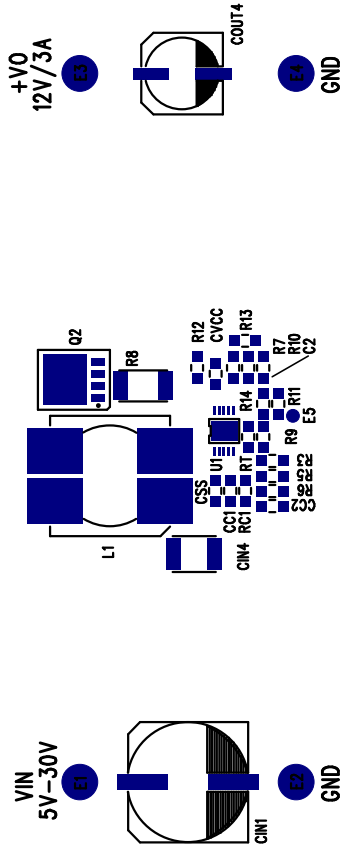


DC1576A - LTC3805IMSE-5 DATE: 05/13/10

LTC3805IMSE-5
LOW NOISE SEPIC DC/DC CONVERTER
DEMO CIRCUIT 1576A



LINEAR
TECHNOLOGY
(408) 432-1900
www.linear.com

LTC CONFIDENTIAL – FOR CUSTOMER USE ONLY

Silkscreen Top

TOP SIDE

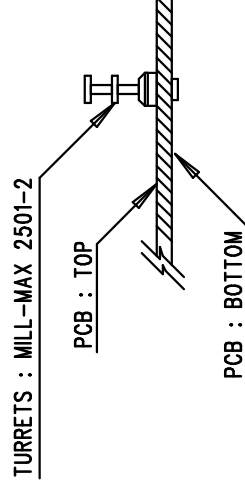
CCB

STANDOFF, NYLON, SNAP ON


BOTTOM SIDE

NOTES: UNLESS OTHERWISE SPECIFIED

1. WORKMANSHIP SHALL BE IN ACCORDANCE WITH IPC-A-610.
2. ASSEMBLY PROCESS SHALL INCLUDE: REFLOW SOLDER TOP SIDE SMD.
3. PARTS TO OMIT WILL BE SPECIFIED ON THE BILL OF MATERIALS.
LOCATIONS OF OMITTED PARTS SHALL BE FREE OF SOLDER.
MASK THE SOLDER STENCIL WHERE SMT PARTS ARE OMITTED.
4. INSTALL SHUNTS AS SHOWN ON ASSY DRAWING.
5. DEPANELIZE BOARDS AFTER ASSEMBLY AND ROUTE-OUT THE
BREAKOUT TABS ON FOUR SIDES OF THE BOARD EDGE.
6. DO NOT APPLY ANY KIND OF ASSEMBLY STAMP OR QA STAMP



REVISION HISTORY				
ECO	REV	DESCRIPTION	APP. ENG.	DATE
-	2	PRODUCTION	GORAN P.	05-13-10

APPROVALS		 1630 MCCARTHY BLVD MILPITAS, CA 95035 PH: (408) 432-1900 www.linear.com LTC CONFIDENTIAL - FOR CUSTOMER USE ONLY	
PCB DES.	JW		
APP ENG.	GORAN P.	TITLE: TOP ASSEMBLY DRAWING LOW NOISE SEPIC DC/DC CONVERTER	
		SIZE	IC NO.
		N/A	LTC3805IMSE-5
			REV.
			2
SCALE = NONE		DEMO CIRCUIT 1576A FILENAME: 1576A.PCB SHT 1 OF 2	