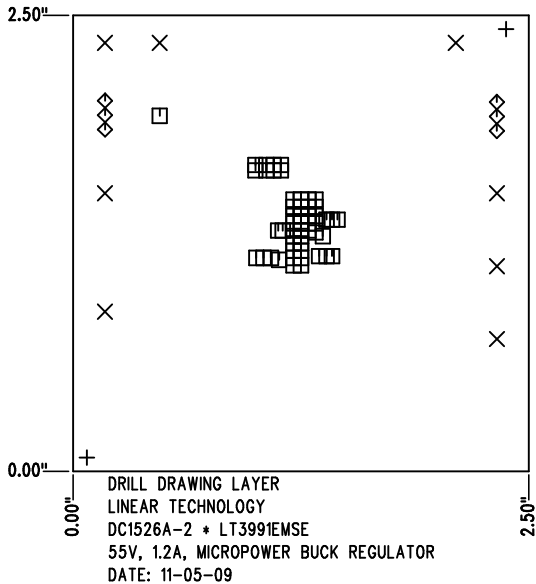
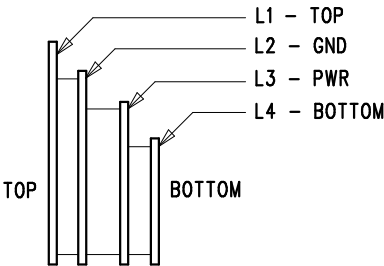


REVISION HISTORY				
ECO	REV	DESCRIPTION	APPR	DATE
1	2	PRODUCTION	M. ZHU	11-05-09

SHOWN FROM COMPONENT SIDE



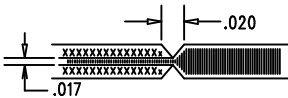
LAYER STRUCTURE


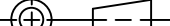


SIZE	QTY	SYM	PLATED	TOL
0.07	2	+	NO	+/-0.003"
0.094	8	X	YES	+/-0.003"
0.012	52	□	YES	+/-0.003"
0.035	6	◇	YES	+/-0.003"

NOTES: UNLESS OTHERWISE SPECIFIED

- FAB PER IPC-A-600.
- MATERIAL: -EPOXY FIBERGLASS, NEMA GRADE FR-4  
 -FINISHED THICKNESS TO BE 0.062" +/- .005"  
 -TOTAL OF 4 LAYERS WITH 2 OZ. CU ON THE OUTER LAYERS  
 AND 1 OZ. CU ON THE INNER LAYERS.  
 -FLAMMABILITY RATING: 94 V-0 MINIMUM.
- SIZE: CUT TO DIMENSIONS AND TOLERANCES SHOWN.  
 0.00" ARE PRIMARY DATUMS.
- DRILLING: -DRILL HOLES PER SCHEDULE. PLATE THROUGH  
 HOLES WITH COPPER, 0.001" THICK MIN.  
 -ALL HOLE SIZES ARE SPECIFIED AFTER PLATING.  
 -HOLE LOCATION TOLERANCES ARE +/-0.003"  
 IN RELATION TO CENTER
- FINISH: -SMOBC USING LPI BOTH SIDES, COLOR GREEN.  
 -GOLD IMMERSION BOTH SIDES.  
 (LEAD FREE SOLDER CAN BE USED FOR PROTOTYPE)  
 -FOR SILKSCREEN: BOTH SIDES USE WHITE NON-CONDUCTIVE INK.
- DO NOT ALTER ARTWORK e.g. TO ADD LOGO OR DATE CODE.  
 PAD SIZE CAN BE MODIFIED TO MEET END FINISH.
- PCBS ARE TO BE RoHS COMPLIANT.
- SCORING FOR PANELIZED PCB:



UNLESS OTHERWISE SPECIFIED DIMENSIONS ARE IN INCHES TOLERANCES ON ANGLE ±° 0.XX" = ±0.01" 0.XXX" = ±0.005" INTERPRET DIM AND TOL PER ASME Y14.5M-1994	APPROVALS		 <b>LINEAR TECHNOLOGY</b>		1630 MCCARTHY BLVD MILPITAS, CA 95035 PH: (408)432-1900 LTC CONFIDENTIAL - FOR CUSTOMER USE ONLY
		INIT	DATE		
	PCB DES.	K. TRAN	11-05-09		
	ENG.	M. ZHU	11-05-09		
	THIRD ANGLE PROJECTION				
			TITLE: FABRICATION DRAWING		
			55V, 1.2A, MICROPOWER BUCK REGULATOR		
			SIZE A		IC NO. LT3991EMSE DEMO CIRCUIT 1526A
					REV. 2
DO NOT SCALE DRAWING	SCALE: NONE		FILENAME: DC1526A-2.PCB		SHT 1 of 1



1630 MCCARTHY BLVD  
MILPITAS, CA 95035  
PH: (408)432-1900  
LTC CONFIDENTIAL-  
FOR CUSTOMER USE ONLY

TITLE: FABRICATION DRAWING

55V, 1.2A, MICROPOWER BUCK REGULATOR

SIZE A	IC NO. LT3991EMSE DEMO CIRCUIT 1526A	REV. 2
-----------	---	-----------