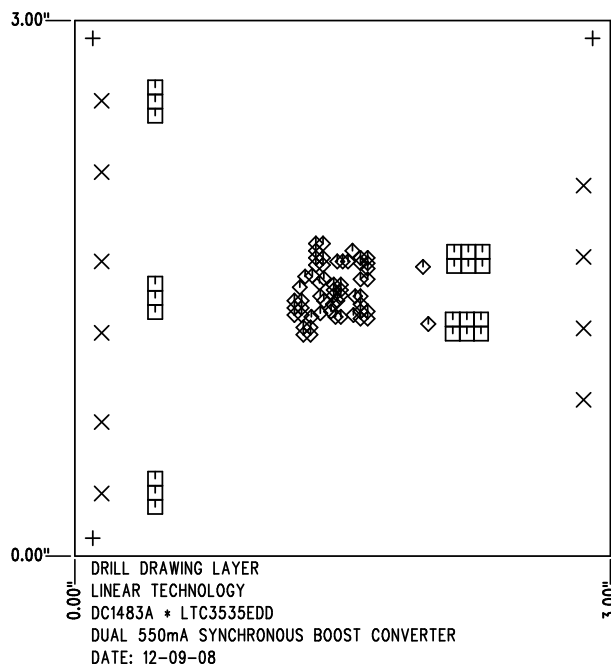
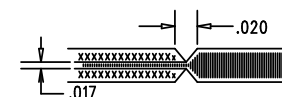


REVISIONS			
REV	DESCRIPTION	APPR	DATE
A	FINAL FABRICATION	FRAN H.	12-09-08


SIZE	QTY	SYM	PLATED	TOL
0.07	3	+	NO	+/-0.003"
0.094	10	×	YES	+/-0.003"
0.035	21	□	YES	+/-0.003"
0.012	58	◇	YES	+/-0.003"

# NOTES: UNLESS OTHERWISE SPECIFIED

- FAB PER IPC-A-600
- MATERIAL: EPOXY FIBERGLASS, NEMA GRADE FR-4  
FINISHED THICKNESS TO BE 0.062" +/- .005"  
TOTAL OF 4 LAYERS WITH 2 OZ. CU ON THE  
OUTER LAYERS AND 1 OZ. CU ON THE INNER LAYERS.  
FLAMMABILITY RATING: 94 V-0 MINIMUM .
- SIZE: CUT TO DIMENSIONS AND TOLERANCES SHOWN.  
0.00" ARE PRIMARY DATUMS.
- DRILLING: DRILL HOLES PER SCHEDULE. PLATE THROUGH  
HOLES WITH COPPER, 0.001" THICK MIN.  
ALL HOLE SIZES ARE SPECIFIED AFTER PLATING.  
HOLE LOCATION TOLERANCES ARE +/-0.003"  
IN RELATION TO CENTER
- FINISH: SMOBC USING LPI BOTH SIDES, COLOR GREEN.  
GOLD IMMERSION. FOR PROTOTYPE: USE LEAD FREE SOLDER.  
FOR SILKSCREEN: USE WHITE NON-CONDUCTIVE INK.
- DO NOT ALTER ARTWORK e.g. TO ADD LOGO OR DATE CODE.  
PAD SIZE CAN BE MODIFIED TO MEET END FINISH.
- PCBS ARE TO BE RoHS COMPLIANT.
- SCORING FOR PANELIZED PCB:



SHOWN FROM COMPONENT SIDE

APPROVALS			 <div> 1630 MCCARTHY BLVD  MILPITAS, CA 95035  PH: (408)432-1900  LTC CONFIDENTIAL-  FOR CUSTOMER USE ONLY </div>	
	INIT	DATE		
DRAWN			TITLE: FABRICATION DRAWING	
CHECK				
DESIGN	KIM T.	12-09-08	DUAL 550mA SYNCHRONOUS BOOST CONVERTER	
ENGR	FRAN H.	12-09-08		
			SIZE	REV.
			A	A
SCALE = NONE			SHT 1 of 1	